



Art Form Architecture, LLC

STEPHANIE WITH IN-LAW

405.127 GR

In addition to our Terms and Conditions (the "Terms"), please be aware of the following:

Art Form Architecture, LLC ("Artform") requires that our Drawings be built substantially as designed. Artform will not be obligated by or liable for use of this design with markups as part of any builder agreement. While we attempt to accommodate where possible and reasonable, and where the changes do not denigrate our design, any and all changes to Drawings must be approved in writing by Artform. It is recommended that you have your Drawing updated by Artform prior to attaching any Drawing to any builder agreement. Artform shall not be responsible for the misuse of or unauthorized alterations to any of its Drawings.



Width 62.00 ^{FT}

Depth 41.67 ^{FT}

Height 30.08 ^{FT}

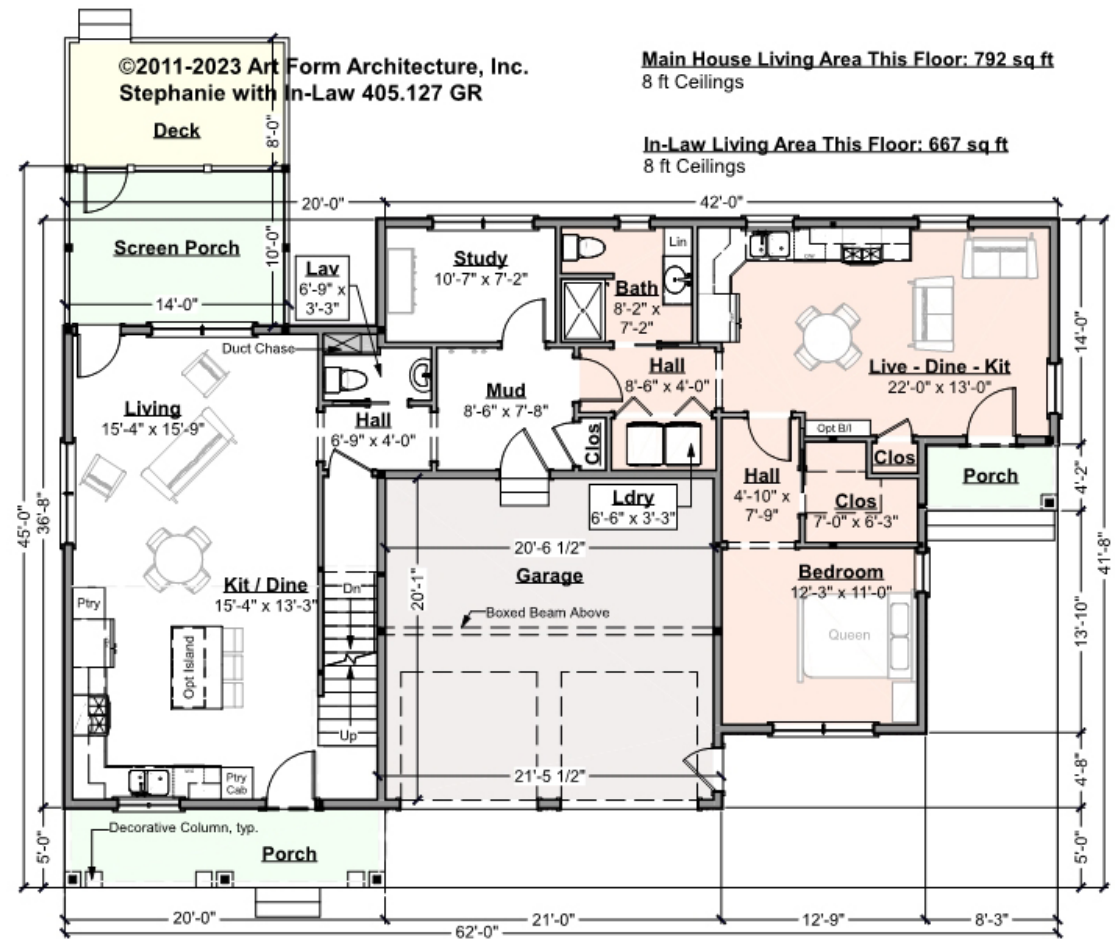
LIVING AREA		2458 ^{FT}	BEDROOMS		5	BATHROOMS		3.5
Main		1791 ^{FT}	Main		3	Main		2.5
Future		0 ^{FT}	Future		1	Future		0
2 nd Unit		667 ^{FT}	2 nd Unit		1	2 nd Unit		1



Art Form Architecture, LLC

STEPHANIE WITH IN-LAW - 1ST FLOOR 405.127 GR

Some features shown are optional. Your Purchase & Sale Agreement governs, whether items are labeled "optional" in this document or not.



* Major Change Fee, see website plan page for cost

F1 LIVING AREA 1459 ^{FT}

Main 792.00 ^{FT}

Future ^{FT}

2nd Unit 667.00 ^{FT}

F1 BEDROOMS 2

Main

Future 1.00

2nd Unit 1.00

F1 BATHROOMS 1.5

Main 0.50

Future

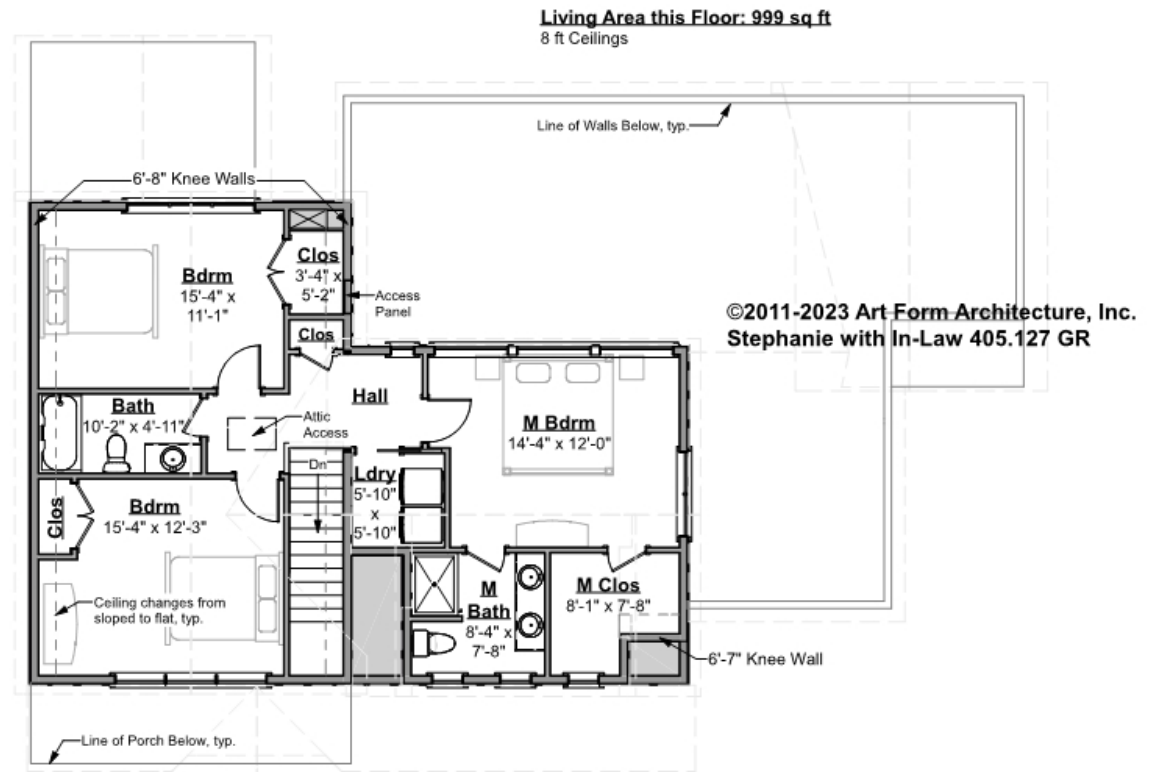
2nd Unit 1.00



STEPHANIE WITH IN-LAW - 2ND FLOOR

405.127 GR

Some features shown are optional. Your Purchase & Sale Agreement governs, whether items are labeled "optional" in this document or not.



CLG HT SHOWN 8'-0"

CLG HT POSSIBLE 9'-0"

* Major Change Fee, see website plan page for cost

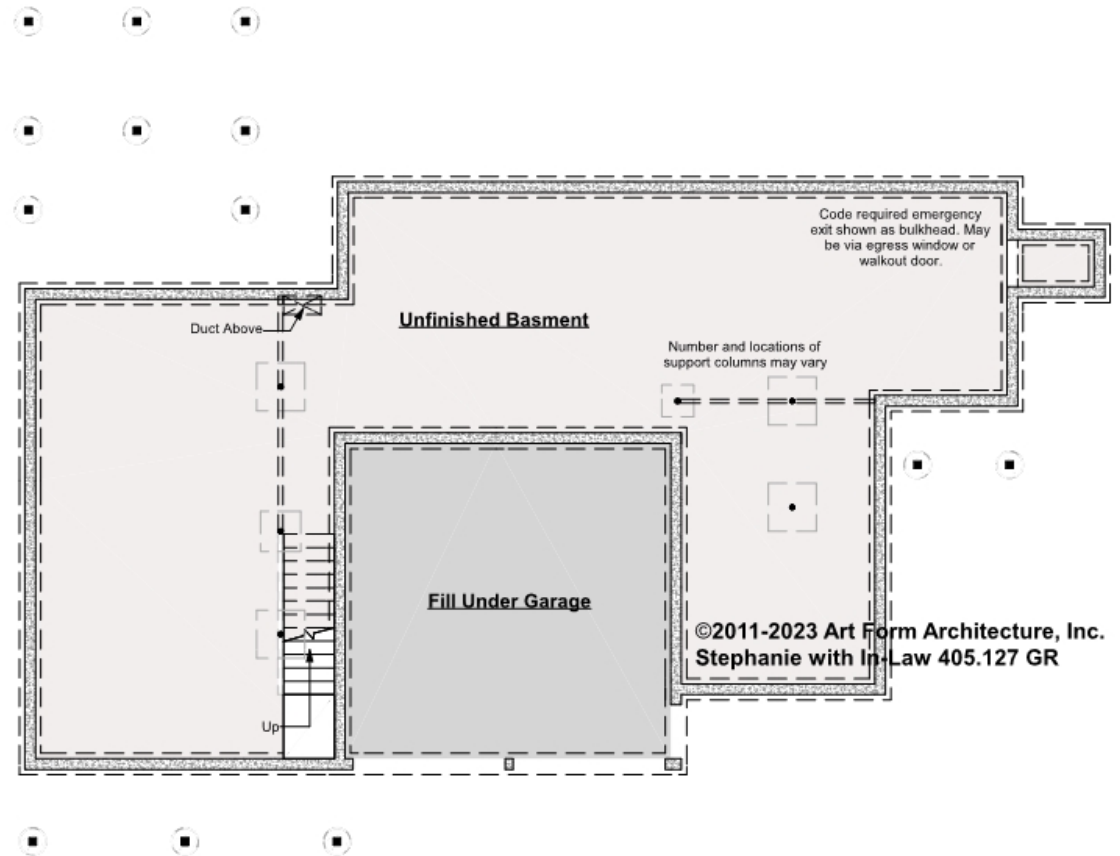
F1 LIVING AREA	999 ^{FT}	F1 BEDROOMS	3	F1 BATHROOMS	2
Main	999.00 ^{FT}	Main	3.00	Main	2.00
Future	FT	Future		Future	
2 nd Unit	FT	2 nd Unit		2 nd Unit	



STEPHANIE WITH IN-LAW - BASEMENT

405.127 GR

Some features shown are optional. Your Purchase & Sale Agreement governs, whether items are labeled "optional" in this document or not.



CLG HT SHOWN 7'-8" CLG HT POSSIBLE 9'-0"

* Major Change Fee, see website plan page for cost

F1 LIVING AREA 0 FT

Main FT

Future FT

2nd Unit FT

F1 BEDROOMS 0

Main FT

Future FT

2nd Unit FT

F1 BATHROOMS 0

Main FT

Future FT

2nd Unit FT



Art Form Architecture, LLC

STEPHANIE WITH IN-LAW - FRONT ELEVATION

405.127 GR

Some features shown are optional. Your Purchase & Sale Agreement governs, whether items are labeled "optional" in this document or not.





Art Form Architecture, LLC

STEPHANIE WITH IN-LAW - RIGHT ELEVATION

405.127 GR

—
Some features shown are optional. Your Purchase & Sale Agreement governs, whether items are labeled "optional" in this document or not.





Art Form Architecture, LLC

STEPHANIE WITH IN-LAW - REAR ELEVATION

405.127 GR

—
Some features shown are optional. Your Purchase & Sale Agreement governs, whether items are labeled "optional" in this document or not.



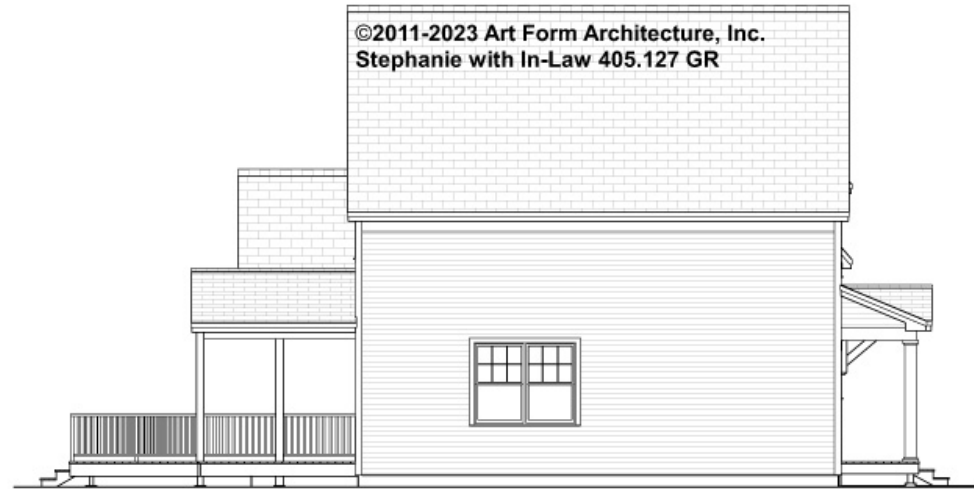


Art Form Architecture, LLC

STEPHANIE WITH IN-LAW - LEFT ELEVATION

405.127 GR

—
Some features shown are optional. Your Purchase & Sale Agreement governs, whether items are labeled "optional" in this document or not.





Art Form Architecture, LLC

STEPHANIE WITH IN-LAW - REAR RENDER

405.127 GR

—
Some features shown are optional. Your Purchase & Sale Agreement governs, whether items are labeled "optional" in this document or not.

