



Art Form Architecture, LLC

SKYLAR

935.120 GL

In addition to our Terms and Conditions (the "Terms"), please be aware of the following:

Art Form Architecture, LLC ("Artform") requires that our Drawings be built substantially as designed. Artform will not be obligated by or liable for use of this design with markups as part of any builder agreement. While we attempt to accommodate where possible and reasonable, and where the changes do not denigrate our design, any and all changes to Drawings must be approved in writing by Artform. It is recommended that you have your Drawing updated by Artform prior to attaching any Drawing to any builder agreement. Artform shall not be responsible for the misuse of or unauthorized alterations to any of its Drawings.



Width 48.00 ^{FT}

Depth 32.58 ^{FT}

Height 31.41 ^{FT}

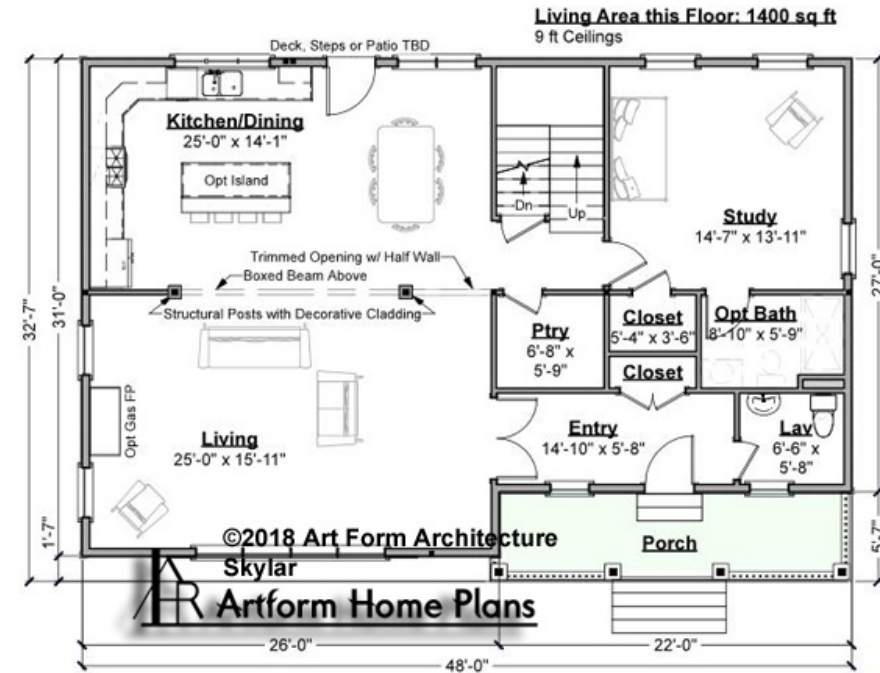
LIVING AREA		2787 ^{FT}	BEDROOMS		5	BATHROOMS		4.5
Main		2787 ^{FT}	Main		4	Main		3.5
Future		0 ^{FT}	Future		1	Future		1
2 nd Unit		0 ^{FT}	2 nd Unit		0	2 nd Unit		0



SKYLAR - 1ST FLOOR

935.120 GL

Some features shown are optional. Your Purchase & Sale Agreement governs, whether items are labeled "optional" in this document or not.



CRS 935.120 Skylar

CLG HT SHOWN 9'-0"

CLG HT POSSIBLE 8'-0"

* Major Change Fee, see website plan page for cost

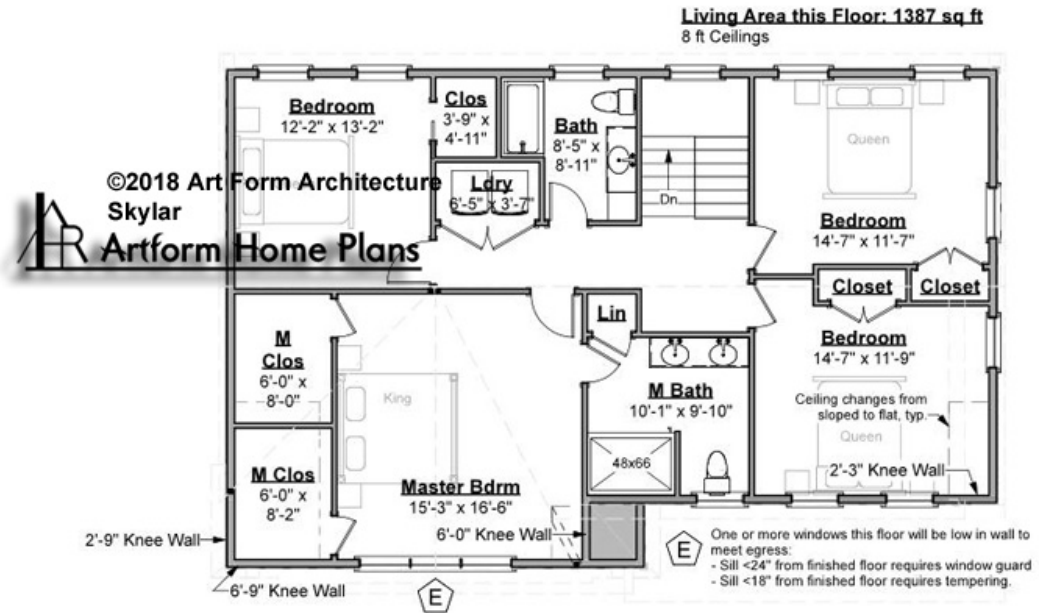
F1 LIVING AREA		1400 ^{FT}	F1 BEDROOMS		1	F1 BATHROOMS		1.5
Main		1400.00 ^{FT}	Main		0.00	Main		0.50
Future		0.00 ^{FT}	Future		1.00	Future		1.00
2 nd Unit		0.00 ^{FT}	2 nd Unit		0.00	2 nd Unit		0.00



SKYLAR - 2ND FLOOR

935.120 GL

Some features shown are optional. Your Purchase & Sale Agreement governs, whether items are labeled "optional" in this document or not.



CRS 935.120 Skylar

CLG HT SHOWN 8'-0"

CLG HT POSSIBLE 8'-0"

* Major Change Fee, see website plan page for cost

F1 LIVING AREA	1387 ^{FT}	F1 BEDROOMS	4	F1 BATHROOMS	2
Main	1387.00 ^{FT}	Main	4.00	Main	2.00
Future	0.00 ^{FT}	Future	0.00	Future	0.00
2 nd Unit	0.00 ^{FT}	2 nd Unit	0.00	2 nd Unit	0.00

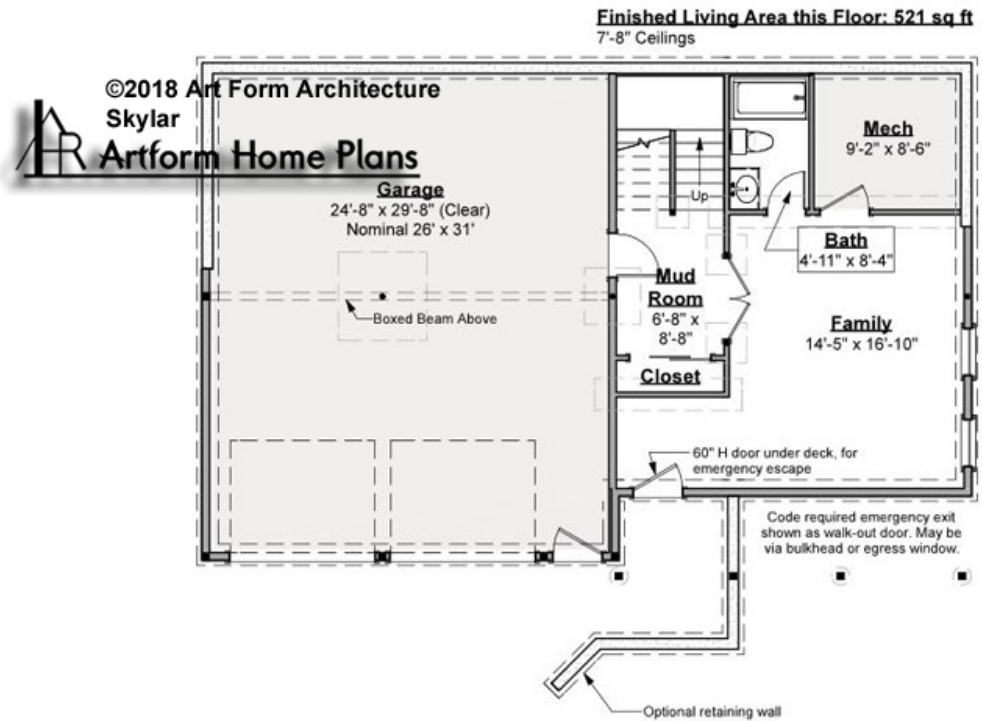


SKYLAR - BASEMENT

935.120 GL

Note: finished basement area is NOT included in main or future Living Area, but IS shown on CDs. We do this so Search doesn't mislead - everyone knows you can finish a basement!

Some features shown are optional. Your Purchase & Sale Agreement governs, whether items are labeled "optional" in this document or not.



CRS 935.120 Skylar

CLG HT SHOWN 7'-8"

CLG HT POSSIBLE 7'-8"

* Major Change Fee, see website plan page for cost

F1 LIVING AREA	0 ^{FT}	F1 BEDROOMS	0	F1 BATHROOMS	1
Main	0.00 ^{FT}	Main	0.00	Main	1.00
Future	0.00 ^{FT}	Future	0.00	Future	0.00
2 nd Unit	0.00 ^{FT}	2 nd Unit	0.00	2 nd Unit	0.00

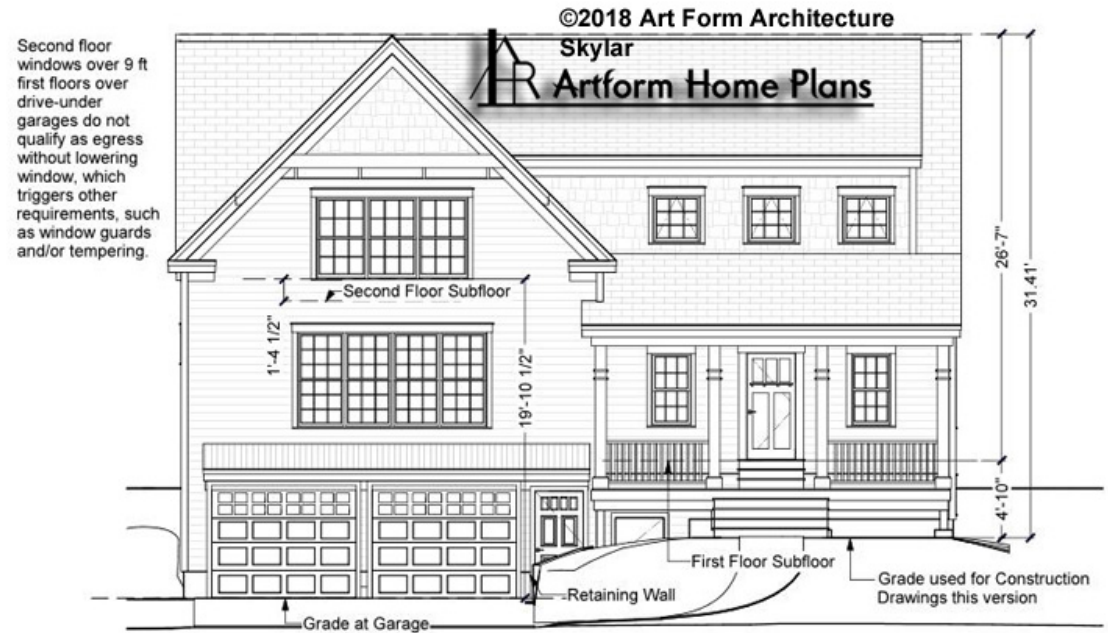


Art Form Architecture, LLC

SKYLAR - FRONT ELEVATION

935.120 GL

Some features shown are optional. Your Purchase & Sale Agreement governs, whether items are labeled "optional" in this document or not.



CRS 935.120 Skylar



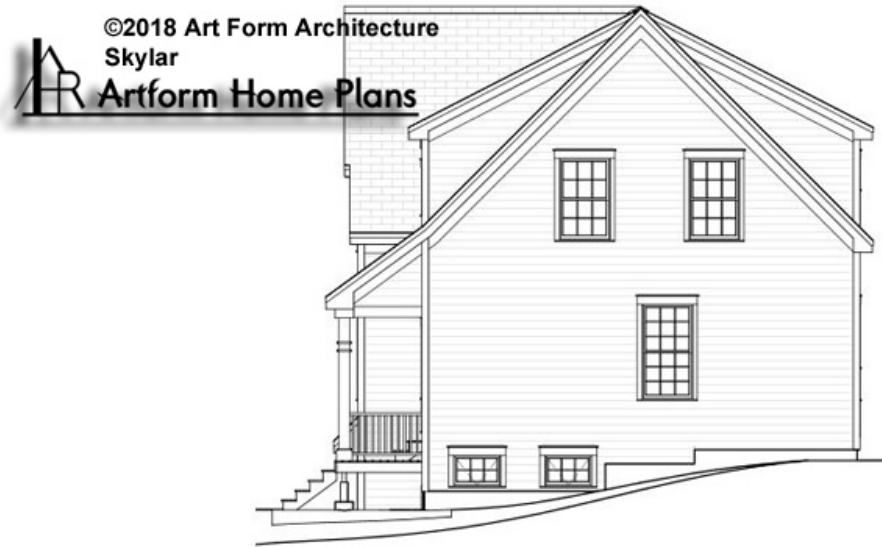
Art Form Architecture, LLC

SKYLAR - RIGHT ELEVATION

935.120 GL

—

Some features shown are optional. Your Purchase & Sale Agreement governs, whether items are labeled "optional" in this document or not.



CRS 935.120 Skylar

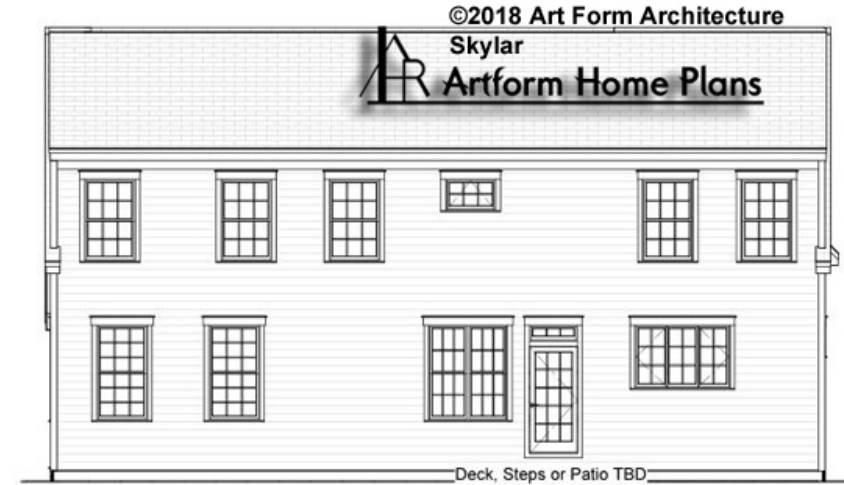


Art Form Architecture, LLC

SKYLAR - REAR ELEVATION

935.120 GL

Some features shown are optional. Your Purchase & Sale Agreement governs, whether items are labeled "optional" in this document or not.



CRS 935.120 Skylar



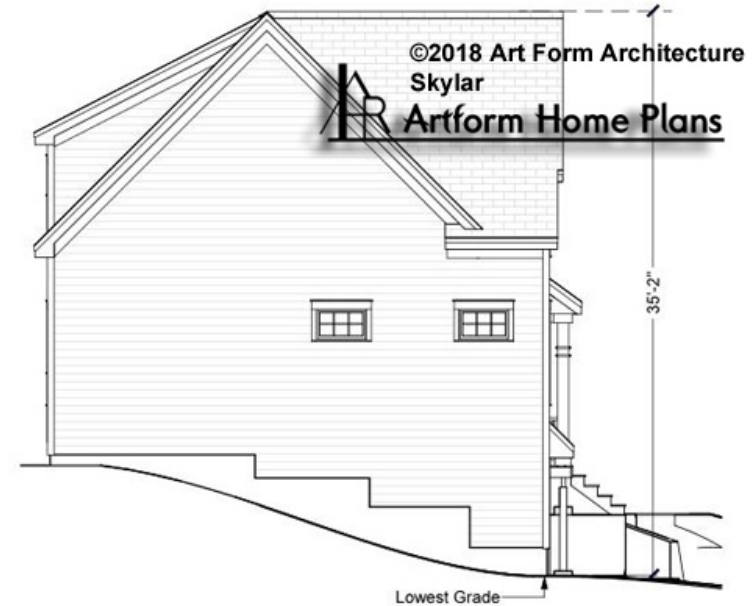
Art Form Architecture, LLC

SKYLAR - LEFT ELEVATION

935.120 GL

—

Some features shown are optional. Your Purchase & Sale Agreement governs, whether items are labeled "optional" in this document or not.



CRS 935.120 Skylar