



SEAPOINT MANOR  
1189.127 GL

In addition to our Terms and Conditions (the "Terms"), please be aware of the following:

Art Form Architecture, LLC ("Artform") requires that our Drawings be built substantially as designed. Artform will not be obligated by or liable for use of this design with markups as part of any builder agreement. While we attempt to accommodate where possible and reasonable, and where the changes do not denigrate our design, any and all changes to Drawings must be approved in writing by Artform. It is recommended that you have your Drawing updated by Artform prior to attaching any Drawing to any builder agreement. Artform shall not be responsible for the misuse of or unauthorized alterations to any of its Drawings.



Width 122.50 <sup>FT</sup>

Depth 91.50 <sup>FT</sup>

Height 33.21 <sup>FT</sup>

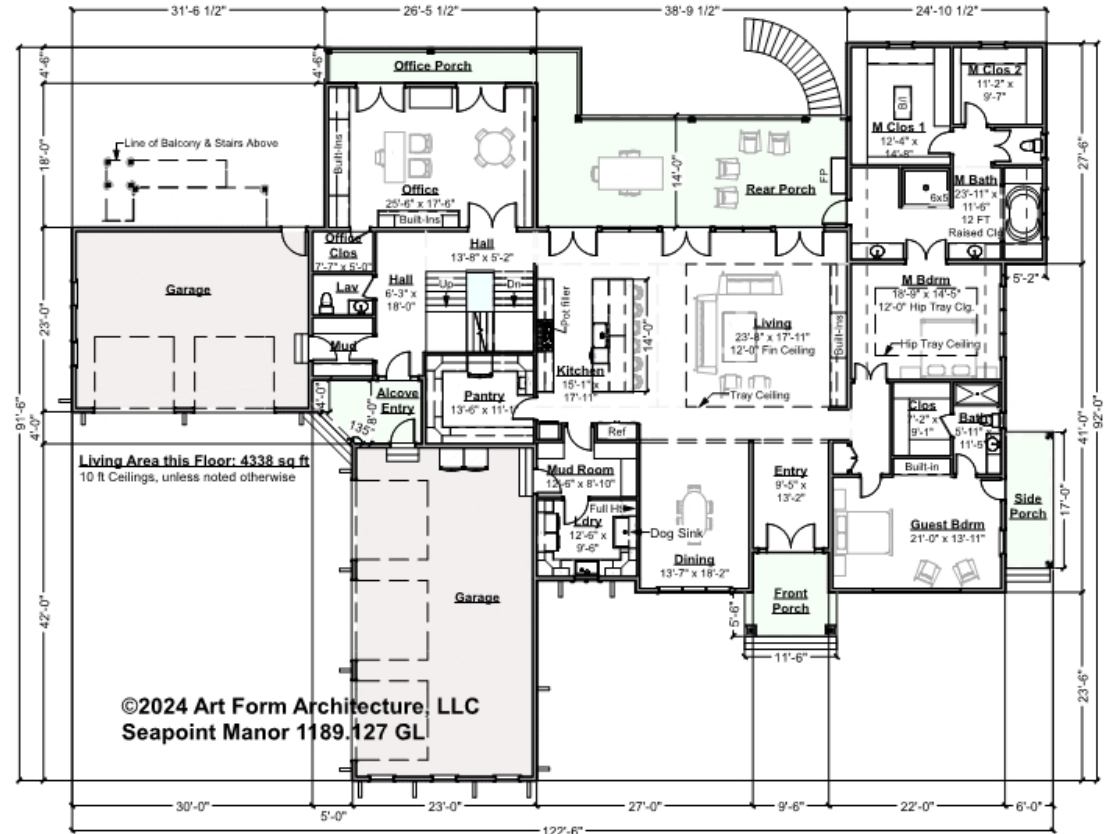
LIVING AREA		BEDROOMS		BATHROOMS	
	10954 <sup>FT</sup>		7		6.5
Main	10747 <sup>FT</sup>	Main	5	Main	6.5
Future	207 <sup>FT</sup>	Future	2	Future	0
2 <sup>nd</sup> Unit	0 <sup>FT</sup>	2 <sup>nd</sup> Unit	0	2 <sup>nd</sup> Unit	0



## SEAPOINT MANOR - 1<sup>ST</sup> FLOOR

1189.127 GL

Some features shown are optional. Your Purchase & Sale Agreement governs, whether items are labeled "optional" in this document or not.



CLG HT SHOWN 10' & Up      CLG HT POSSIBLE 8'-0"

\* Major Change Fee, see website plan page for cost

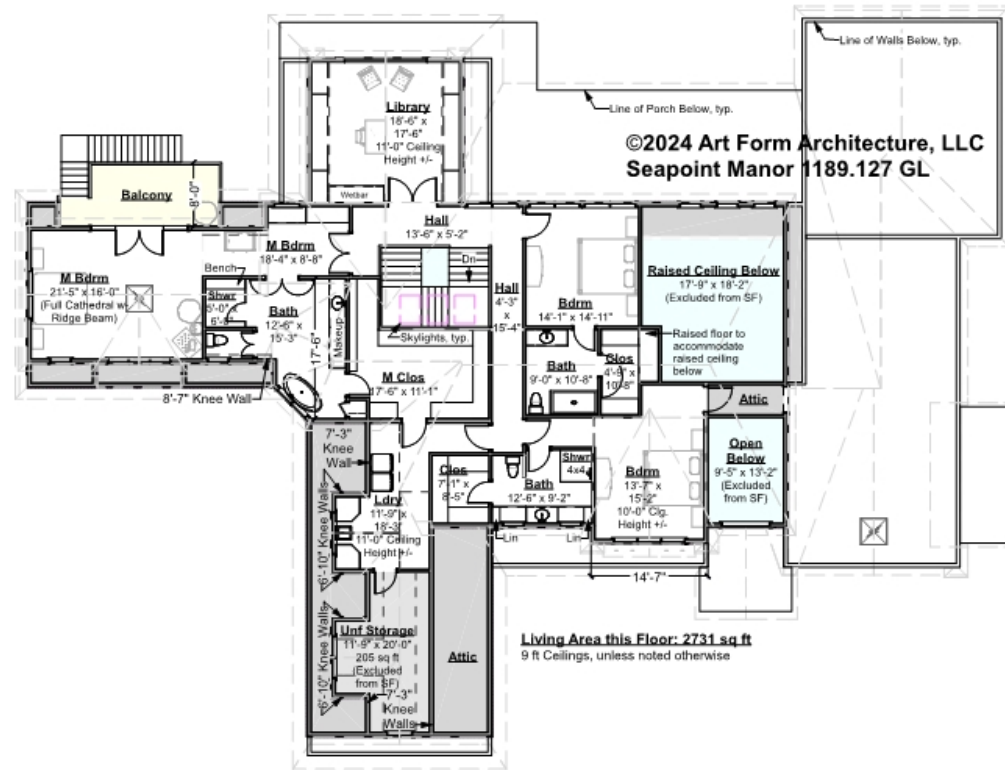
F1 LIVING AREA		F1 BEDROOMS		F1 BATHROOMS	
	4339 <sup>FT</sup>		2		2.5
Main	4338.00 <sup>FT</sup>	Main	2.00	Main	2.50
Future	1.00 <sup>FT</sup>	Future		Future	
2 <sup>nd</sup> Unit	<sup>FT</sup>	2 <sup>nd</sup> Unit		2 <sup>nd</sup> Unit	



## SEAPOINT MANOR - 2<sup>ND</sup> FLOOR

### 1189.127 GL

Some features shown are optional. Your Purchase & Sale Agreement governs, whether items are labeled "optional" in this document or not.



CLG HT SHOWN 9'-0"

CLG HT POSSIBLE 8'-0"

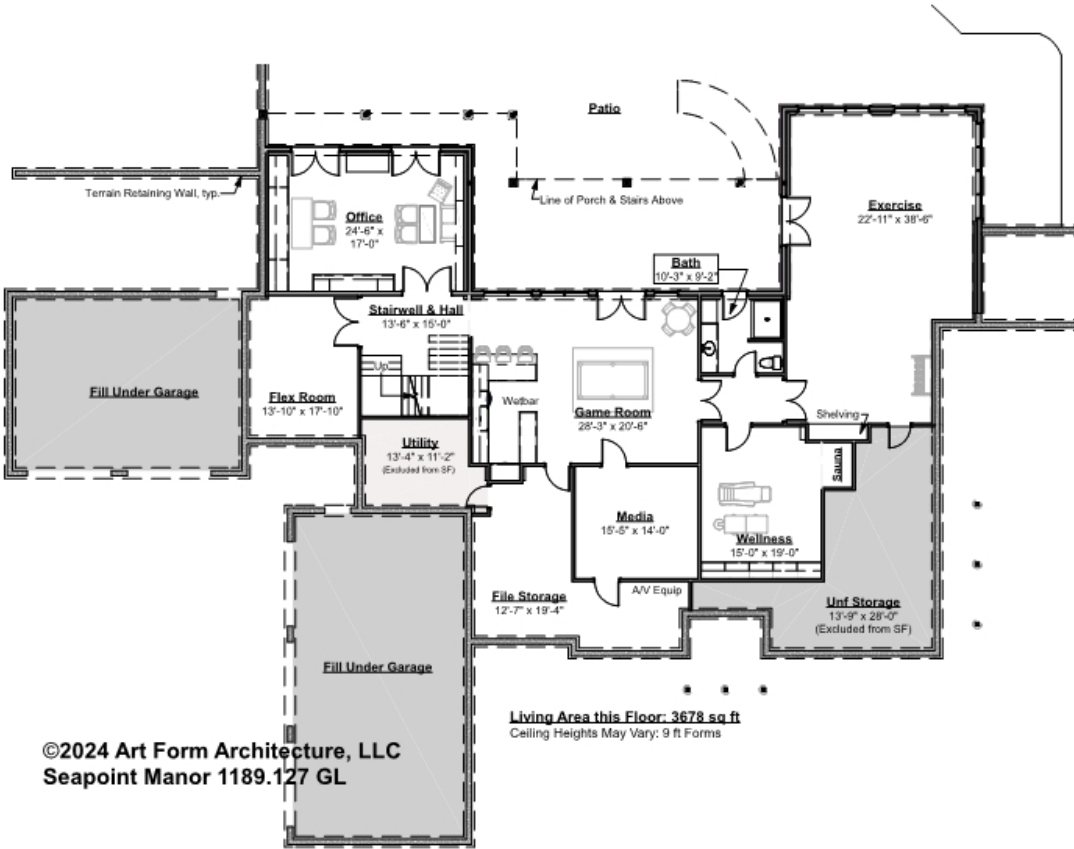
\* Major Change Fee, see website plan page for cost

F1 LIVING AREA		2936 FT	F1 BEDROOMS		5	F1 BATHROOMS		3
Main		2731.00 FT	Main		3.00	Main		3.00
Future		205.00 FT	Future		2.00	Future		
2 <sup>nd</sup> Unit		FT	2 <sup>nd</sup> Unit			2 <sup>nd</sup> Unit		



SEAPOINT MANOR - BASEMENT  
1189.127 GL

Some features shown are optional. Your Purchase & Sale Agreement governs, whether items are labeled "optional" in this document or not.



CLG HT SHOWN 8'-1" - 8'-11"      CLG HT POSSIBLE 7'-8"

\* Major Change Fee, see website plan page for cost

F1 LIVING AREA		3679 <sup>FT</sup>	F1 BEDROOMS		0	F1 BATHROOMS		1
Main		3678.00 <sup>FT</sup>	Main			Main		1.00
Future		1.00 <sup>FT</sup>	Future			Future		
2 <sup>nd</sup> Unit		FT	2 <sup>nd</sup> Unit			2 <sup>nd</sup> Unit		



Art Form Architecture, LLC

## SEAPOINT MANOR - FRONT & RIGHT ELEVATIONS

1189.127 GL

Some features shown are optional. Your Purchase & Sale Agreement governs, whether items are labeled "optional" in this document or not.







Art Form Architecture, LLC

## SEAPOINT MANOR - REAR & LEFT ELEVATIONS

1189.127 GL

Some features shown are optional. Your Purchase & Sale Agreement governs, whether items are labeled "optional" in this document or not.



©2024 Art Form Architecture, LLC  
Seapoint Manor 1189.127 GL

