



Art Form Architecture, LLC

SCOTCH FOX CLASSIC

1052.124.v7 GL

In addition to our Terms and Conditions (the "Terms"), please be aware of the following:

Art Form Architecture, LLC ("Artform") requires that our Drawings be built substantially as designed. Artform will not be obligated by or liable for use of this design with markups as part of any builder agreement. While we attempt to accommodate where possible and reasonable, and where the changes do not denigrate our design, any and all changes to Drawings must be approved in writing by Artform. It is recommended that you have your Drawing updated by Artform prior to attaching any Drawing to any builder agreement. Artform shall not be responsible for the misuse of or unauthorized alterations to any of its Drawings.



Width 59.00 ^{FT}

Depth 35.42 ^{FT}

Height 0.00 ^{FT}

LIVING AREA		BEDROOMS		BATHROOMS	
	2465 ^{FT}		4		3
Main	2054 ^{FT}	Main	3	Main	3
Future	411 ^{FT}	Future	1	Future	0
2 nd Unit	0 ^{FT}	2 nd Unit	0	2 nd Unit	0



Some features shown are optional. Your Purchase & Sale Agreement governs, whether items are labeled "optional" in this document or not.



* Major Change Fee, see website plan page for cost

Use of this document is governed by our **Terms and Conditions**, found on our website: <https://www.artform.us/terms-conditions/>

© 2021 Art Form Architecture, LLC. ALL RIGHTS RESERVED.

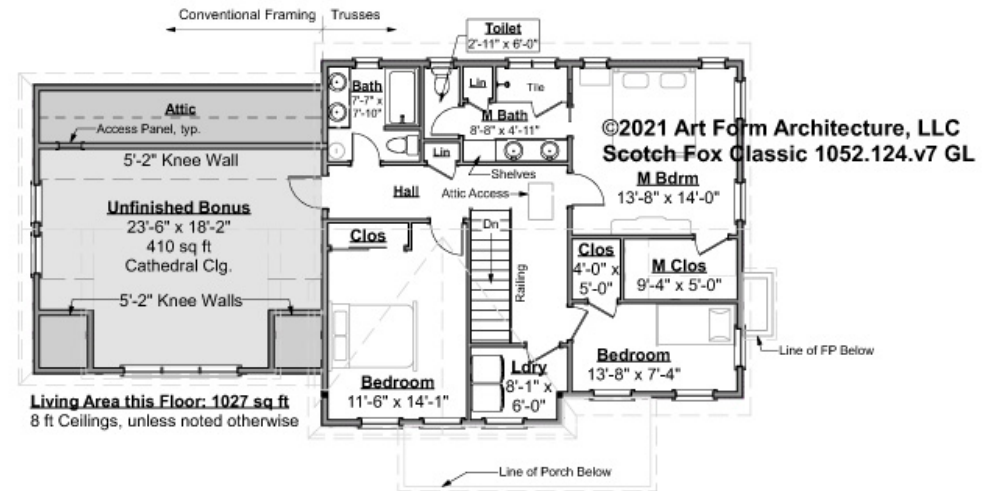
You may not build this Design without purchasing a License to Build (as defined in our Terms). Unauthorized changes are not permitted and violate copyright laws, which provide substantial penalties for infringement.



SCOTCH FOX CLASSIC - 2ND FLOOR

1052.124.v7 GL

Some features shown are optional. Your Purchase & Sale Agreement governs, whether items are labeled "optional" in this document or not.



CLG HT SHOWN 8'-0"

CLG HT POSSIBLE 9'-0"

* Major Change Fee, see website plan page for cost

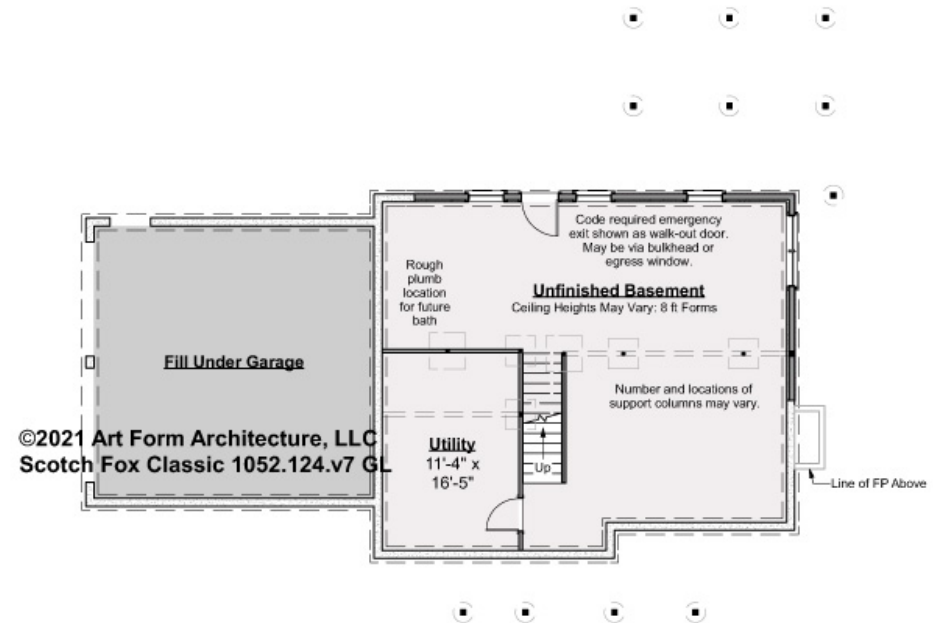
F1 LIVING AREA	1437 ^{FT}	F1 BEDROOMS	4	F1 BATHROOMS	2
Main	1027.00 ^{FT}	Main	3.00	Main	2.00
Future	410.00 ^{FT}	Future	1.00	Future	
2 nd Unit	^{FT}	2 nd Unit		2 nd Unit	



SCOTCH FOX CLASSIC - BASEMENT

1052.124.v7 GL

Some features shown are optional. Your Purchase & Sale Agreement governs, whether items are labeled "optional" in this document or not.



CLG HT SHOWN 7'-8"

CLG HT POSSIBLE 10' & Up

* Major Change Fee, see website plan page for cost

F1 LIVING AREA		0 FT	F1 BEDROOMS		0	F1 BATHROOMS		0
Main		FT	Main			Main		
Future		FT	Future			Future		
2 nd Unit		FT	2 nd Unit			2 nd Unit		



Art Form Architecture, LLC

SCOTCH FOX CLASSIC - FRONT ELEVATION

1052.124.v7 GL

Some features shown are optional. Your Purchase & Sale Agreement governs, whether items are labeled "optional" in this document or not.



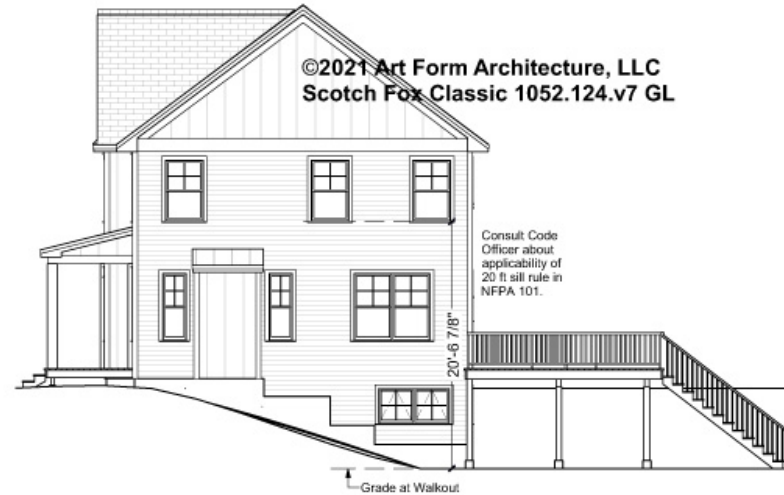


Art Form Architecture, LLC

SCOTCH FOX CLASSIC - RIGHT ELEVATION

1052.124.v7 GL

Some features shown are optional. Your Purchase & Sale Agreement governs, whether items are labeled "optional" in this document or not.





Art Form Architecture, LLC

SCOTCH FOX CLASSIC - REAR ELEVATION

1052.124.v7 GL

Some features shown are optional. Your Purchase & Sale Agreement governs, whether items are labeled "optional" in this document or not.





Art Form Architecture, LLC

SCOTCH FOX CLASSIC - LEFT ELEVATION

1052.124.v7 GL

—
Some features shown are optional. Your Purchase & Sale Agreement governs, whether items are labeled "optional" in this document or not.





Art Form Architecture, LLC

SCOTCH FOX CLASSIC - REAR RENDER

1052.124.v7 GL

—

Some features shown are optional. Your Purchase & Sale Agreement governs, whether items are labeled "optional" in this document or not.

