



Art Form Architecture, LLC

## SAWYER

### 844.124.v20 GL

In addition to our Terms and Conditions (the "Terms"), please be aware of the following:

Art Form Architecture, LLC ("Artform") requires that our Drawings be built substantially as designed. Artform will not be obligated by or liable for use of this design with markups as part of any builder agreement. While we attempt to accommodate where possible and reasonable, and where the changes do not denigrate our design, any and all changes to Drawings must be approved in writing by Artform. It is recommended that you have your Drawing updated by Artform prior to attaching any Drawing to any builder agreement. Artform shall not be responsible for the misuse of or unauthorized alterations to any of its Drawings.



Width 46.00 <sup>FT</sup>

Depth 42.00 <sup>FT</sup>

Height 31.29 <sup>FT</sup>

| LIVING AREA          |                    | BEDROOMS             |   | BATHROOMS            |     |
|----------------------|--------------------|----------------------|---|----------------------|-----|
|                      | 2781 <sup>FT</sup> |                      | 5 |                      | 2.5 |
| Main                 | 2781 <sup>FT</sup> | Main                 | 4 | Main                 | 2.5 |
| Future               | 0 <sup>FT</sup>    | Future               | 1 | Future               | 0   |
| 2 <sup>nd</sup> Unit | 0 <sup>FT</sup>    | 2 <sup>nd</sup> Unit | 0 | 2 <sup>nd</sup> Unit | 0   |

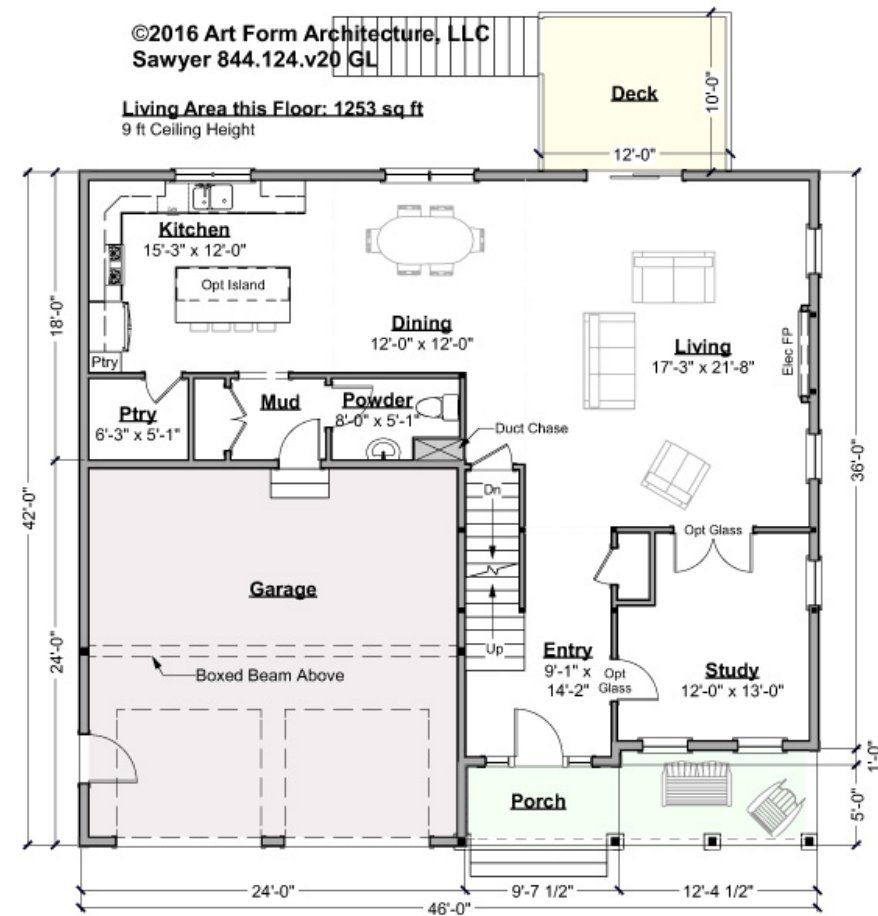


Art Form Architecture, LLC

## SAWYER - 1<sup>ST</sup> FLOOR

### 844.124.v20 GL

Some features shown are optional. Your Purchase & Sale Agreement governs, whether items are labeled "optional" in this document or not.



CLG HT SHOWN 9'-0"

CLG HT POSSIBLE 8'-0"

\* Major Change Fee, see website plan page for cost

| F1 LIVING AREA       |  | 1253 <sup>FT</sup>    | F1 BEDROOMS          |  | 1    | F1 BATHROOMS         |  | 0.5  |
|----------------------|--|-----------------------|----------------------|--|------|----------------------|--|------|
| Main                 |  | 1253.00 <sup>FT</sup> | Main                 |  |      | Main                 |  | 0.50 |
| Future               |  | <sup>FT</sup>         | Future               |  | 1.00 | Future               |  |      |
| 2 <sup>nd</sup> Unit |  | <sup>FT</sup>         | 2 <sup>nd</sup> Unit |  |      | 2 <sup>nd</sup> Unit |  |      |

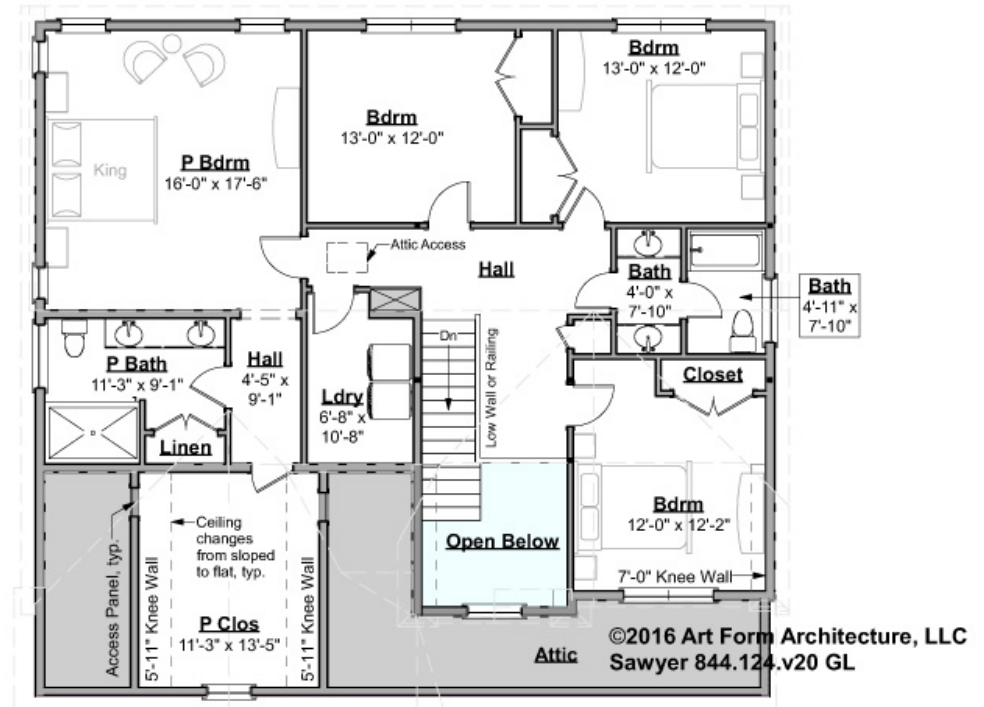


## SAWYER - 2<sup>ND</sup> FLOOR

844.124.v20 GL

Some features shown are optional. Your Purchase & Sale Agreement governs, whether items are labeled "optional" in this document or not.

**Living Area this Floor: 1528 sq ft**  
8 ft Ceiling Height



CLG HT SHOWN 8'-0"

CLG HT POSSIBLE 9'-0"

\* Major Change Fee, see website plan page for cost

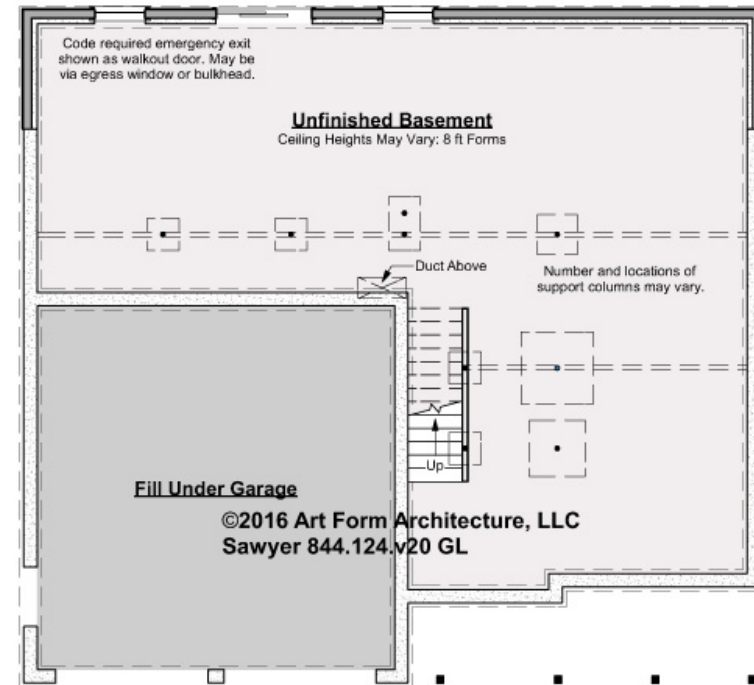
| F1 LIVING AREA       |                       | F1 BEDROOMS          |      | F1 BATHROOMS         |      |
|----------------------|-----------------------|----------------------|------|----------------------|------|
|                      | 1528 <sup>FT</sup>    |                      | 4    |                      | 2    |
| Main                 | 1528.00 <sup>FT</sup> | Main                 | 4.00 | Main                 | 2.00 |
| Future               | FT                    | Future               |      | Future               |      |
| 2 <sup>nd</sup> Unit | FT                    | 2 <sup>nd</sup> Unit |      | 2 <sup>nd</sup> Unit |      |



## SAWYER - BASEMENT

844.124.v20 GL

Some features shown are optional. Your Purchase & Sale Agreement governs, whether items are labeled "optional" in this document or not.



CLG HT SHOWN 7'-8"

CLG HT POSSIBLE 9'-0"

\* Major Change Fee, see website plan page for cost

| F1 LIVING AREA       |  | 0 FT    | F1 BEDROOMS          |  | 0    | F1 BATHROOMS         |  | 0    |
|----------------------|--|---------|----------------------|--|------|----------------------|--|------|
| Main                 |  | 0.00 FT | Main                 |  | 0.00 | Main                 |  | 0.00 |
| Future               |  | FT      | Future               |  |      | Future               |  |      |
| 2 <sup>nd</sup> Unit |  | FT      | 2 <sup>nd</sup> Unit |  |      | 2 <sup>nd</sup> Unit |  |      |



Art Form Architecture, LLC

## SAWYER - FRONT ELEVATION

844.124.v20 GL

Some features shown are optional. Your Purchase & Sale Agreement governs, whether items are labeled "optional" in this document or not.





Art Form Architecture, LLC

## SAWYER - RIGHT ELEVATION

844.124.v20 GL

Some features shown are optional. Your Purchase & Sale Agreement governs, whether items are labeled "optional" in this document or not.



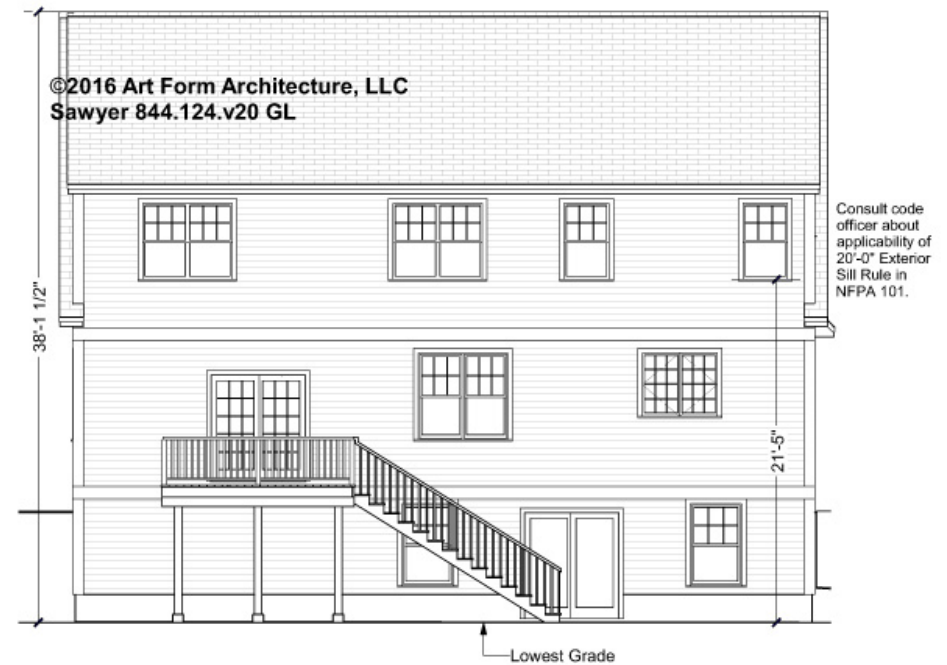


Art Form Architecture, LLC

## SAWYER - REAR ELEVATION

844.124.v20 GL

Some features shown are optional. Your Purchase & Sale Agreement governs, whether items are labeled "optional" in this document or not.





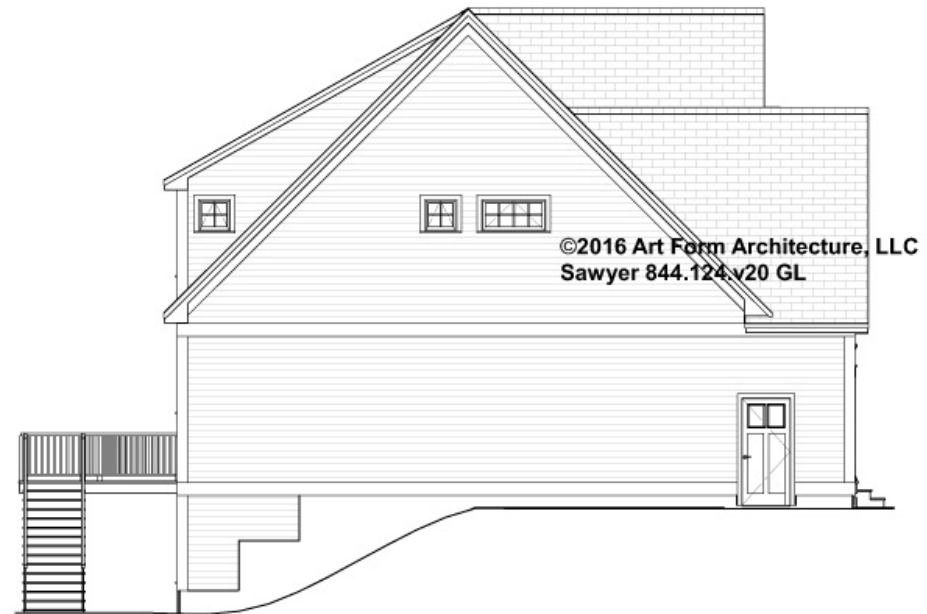


Art Form Architecture, LLC

## SAWYER - LEFT ELEVATION

844.124.v20 GL

Some features shown are optional. Your Purchase & Sale Agreement governs, whether items are labeled "optional" in this document or not.







Art Form Architecture, LLC

## SAWYER - REAR RENDER

844.124.v20 GL

Some features shown are optional. Your Purchase & Sale Agreement governs, whether items are labeled "optional" in this document or not.

