



Art Form Architecture, LLC

## SASHA

### 719.144.v31 GL

In addition to our Terms and Conditions (the "Terms"), please be aware of the following:

Art Form Architecture, LLC ("Artform") requires that our Drawings be built substantially as designed. Artform will not be obligated by or liable for use of this design with markups as part of any builder agreement. While we attempt to accommodate where possible and reasonable, and where the changes do not denigrate our design, any and all changes to Drawings must be approved in writing by Artform. It is recommended that you have your Drawing updated by Artform prior to attaching any Drawing to any builder agreement. Artform shall not be responsible for the misuse of or unauthorized alterations to any of its Drawings.



Width 57.00 <sup>FT</sup>

Depth 44.83 <sup>FT</sup>

Height 26.25 <sup>FT</sup>

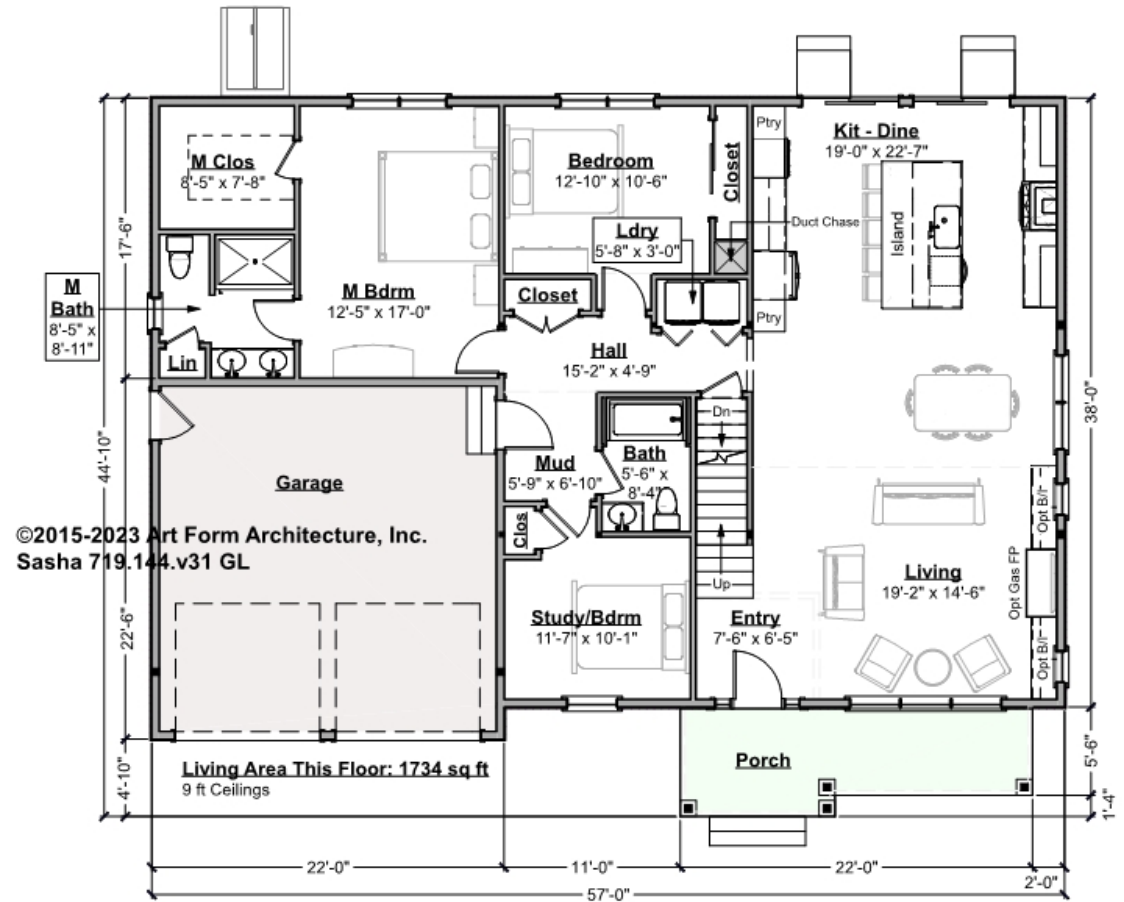
LIVING AREA		BEDROOMS		BATHROOMS	
	2540 <sup>FT</sup>		5		2
Main	2086 <sup>FT</sup>	Main	3	Main	2
Future	454 <sup>FT</sup>	Future	2	Future	0
2 <sup>nd</sup> Unit	0 <sup>FT</sup>	2 <sup>nd</sup> Unit	0	2 <sup>nd</sup> Unit	0



## SASHA - 1<sup>ST</sup> FLOOR

### 719.144.v31 GL

Some features shown are optional. Your Purchase & Sale Agreement governs, whether items are labeled "optional" in this document or not.



CLG HT SHOWN 9'-0"

CLG HT POSSIBLE 8'-0"

\* Major Change Fee, see website plan page for cost

F1 LIVING AREA	1734 FT
Main	1734.00 FT
Future	FT
2 <sup>nd</sup> Unit	FT

F1 BEDROOMS	3
Main	3.00
Future	
2 <sup>nd</sup> Unit	

F1 BATHROOMS	2
Main	2.00
Future	
2 <sup>nd</sup> Unit	

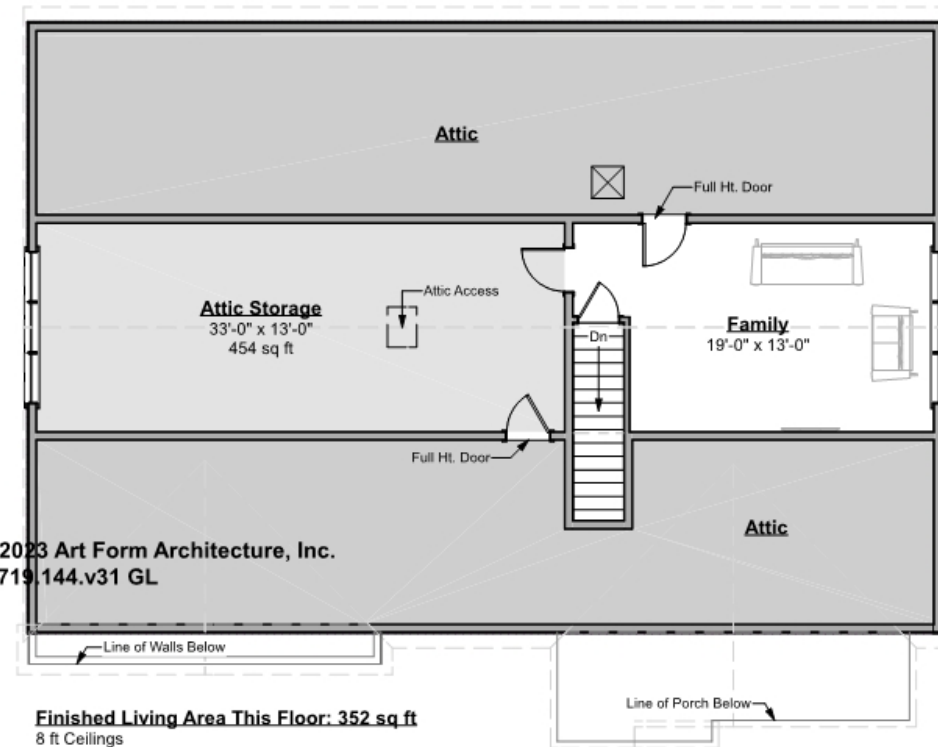


## SASHA - 2<sup>ND</sup> FLOOR

719.144.v31 GL

Some features shown are optional. Your Purchase & Sale Agreement governs, whether items are labeled "optional" in this document or not.

©2015-2023 Art Form Architecture, Inc.  
Sasha 719.144.v31 GL



CLG HT SHOWN 8'-0"

CLG HT POSSIBLE 8'-0"

\* Major Change Fee, see website plan page for cost

<b>F1 LIVING AREA</b>	806 <sup>FT</sup>
-----------------------	-------------------

Main	352.00 <sup>FT</sup>
------	----------------------

Future	454.00 <sup>FT</sup>
--------	----------------------

2 <sup>nd</sup> Unit	<sup>FT</sup>
----------------------	---------------

<b>F1 BEDROOMS</b>	2
--------------------	---

Main	
------	--

Future	2.00
--------	------

2 <sup>nd</sup> Unit	
----------------------	--

<b>F1 BATHROOMS</b>	0
---------------------	---

Main	
------	--

Future	0.00
--------	------

2 <sup>nd</sup> Unit	
----------------------	--

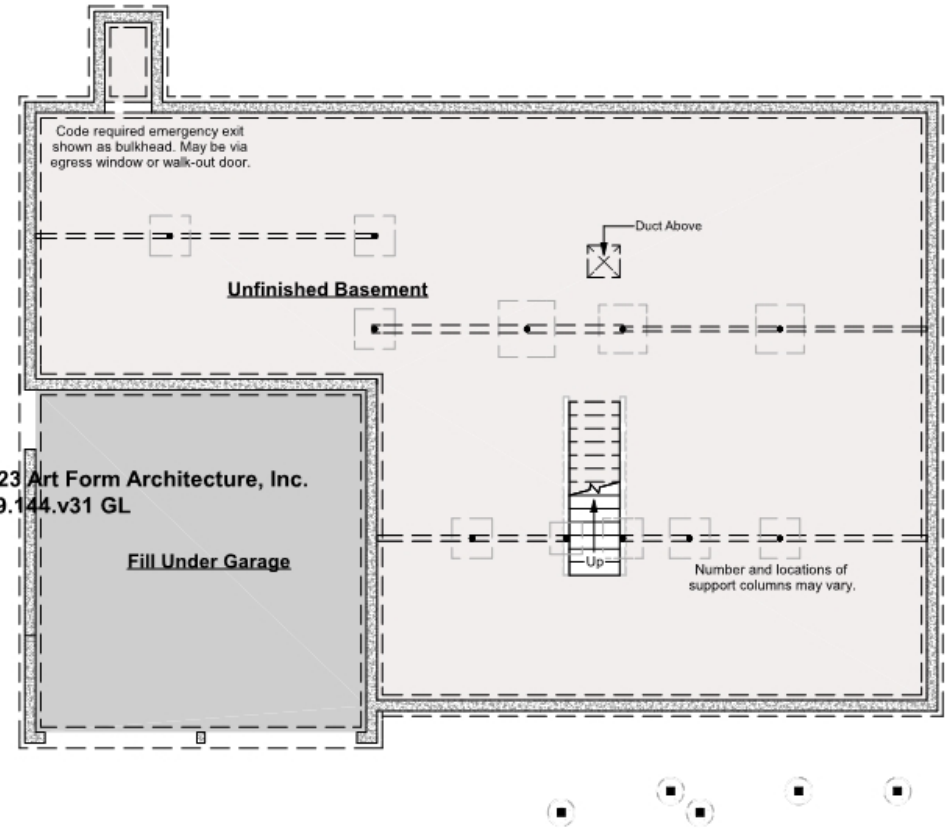


## SASHA - BASEMENT

719.144.v31 GL

Some features shown are optional. Your Purchase & Sale Agreement governs, whether items are labeled "optional" in this document or not.

©2015-2023 Art Form Architecture, Inc.  
Sasha 719.144.v31 GL



CLG HT SHOWN 7'-8"

CLG HT POSSIBLE 9'-0"

\* Major Change Fee, see website plan page for cost

F1 LIVING AREA 0 FT

Main FT

Future FT

2<sup>nd</sup> Unit FT

F1 BEDROOMS 0

Main

Future

2<sup>nd</sup> Unit

F1 BATHROOMS 0

Main

Future

2<sup>nd</sup> Unit



Art Form Architecture, LLC

## SASHA - FRONT ELEVATION

719.144.v31 GL

Some features shown are optional. Your Purchase & Sale Agreement governs, whether items are labeled "optional" in this document or not.





Art Form Architecture, LLC

## SASHA - RIGHT ELEVATION

719.144.v31 GL

—  
Some features shown are optional. Your Purchase & Sale Agreement governs, whether items are labeled "optional" in this document or not.





Art Form Architecture, LLC

## SASHA - REAR ELEVATION

719.144.v31 GL

—  
Some features shown are optional. Your Purchase & Sale Agreement governs, whether items are labeled "optional" in this document or not.







Art Form Architecture, LLC

## SASHA - LEFT ELEVATION

719.144.v31 GL

Some features shown are optional. Your Purchase & Sale Agreement governs, whether items are labeled "optional" in this document or not.







Art Form Architecture, LLC

## SASHA - REAR RENDER

719.144.v31 GL

—  
Some features shown are optional. Your Purchase & Sale Agreement governs, whether items are labeled "optional" in this document or not.

