



Art Form Architecture, LLC

## SAGE 077.001

Note - this design has not yet been built. It's here to offer a starting point for customization. It's priced so that changes that do not increase the size significantly will be at no additional charge. Hourly design fees will apply if you make changes.

—

In addition to our Terms and Conditions (the "Terms"), please be aware of the following:

Art Form Architecture, LLC ("Artform") requires that our Drawings be built substantially as designed. Artform will not be obligated by or liable for use of this design with markups as part of any builder agreement. While we attempt to accommodate where possible and reasonable, and where the changes do not denigrate our design, any and all changes to Drawings must be approved in writing by Artform. It is recommended that you have your Drawing updated by Artform prior to attaching any Drawing to any builder agreement. Artform shall not be responsible for the misuse of or unauthorized alterations to any of its Drawings.



Width 60.00 <sup>FT</sup>

Depth 71.00 <sup>FT</sup>

Height 25.42 <sup>FT</sup>

| LIVING AREA          | 2975 <sup>FT</sup> |
|----------------------|--------------------|
| Main                 | 2202 <sup>FT</sup> |
| Future               | 773 <sup>FT</sup>  |
| 2 <sup>nd</sup> Unit | 0 <sup>FT</sup>    |

| BEDROOMS             | 4 |
|----------------------|---|
| Main                 | 3 |
| Future               | 1 |
| 2 <sup>nd</sup> Unit | 0 |

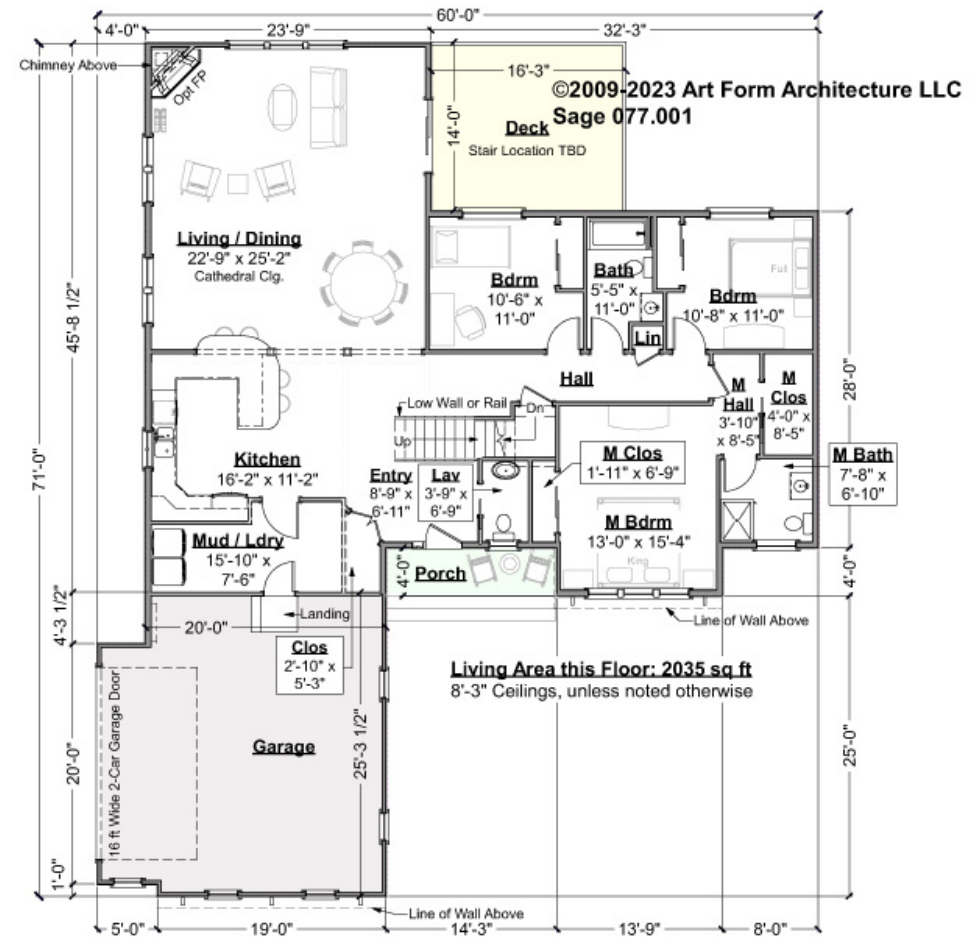
| BATHROOMS            | 3.5 |
|----------------------|-----|
| Main                 | 2.5 |
| Future               | 1   |
| 2 <sup>nd</sup> Unit | 0   |



# SAGE - 1<sup>ST</sup> FLOOR

## 077.001

Some features shown are optional. Your Purchase & Sale Agreement governs, whether items are labeled "optional" in this document or not.



CLG HT SHOWN 8'-1" - 8'-11"

CLG HT POSSIBLE 9'-0"

\* Major Change Fee, see website plan page for cost

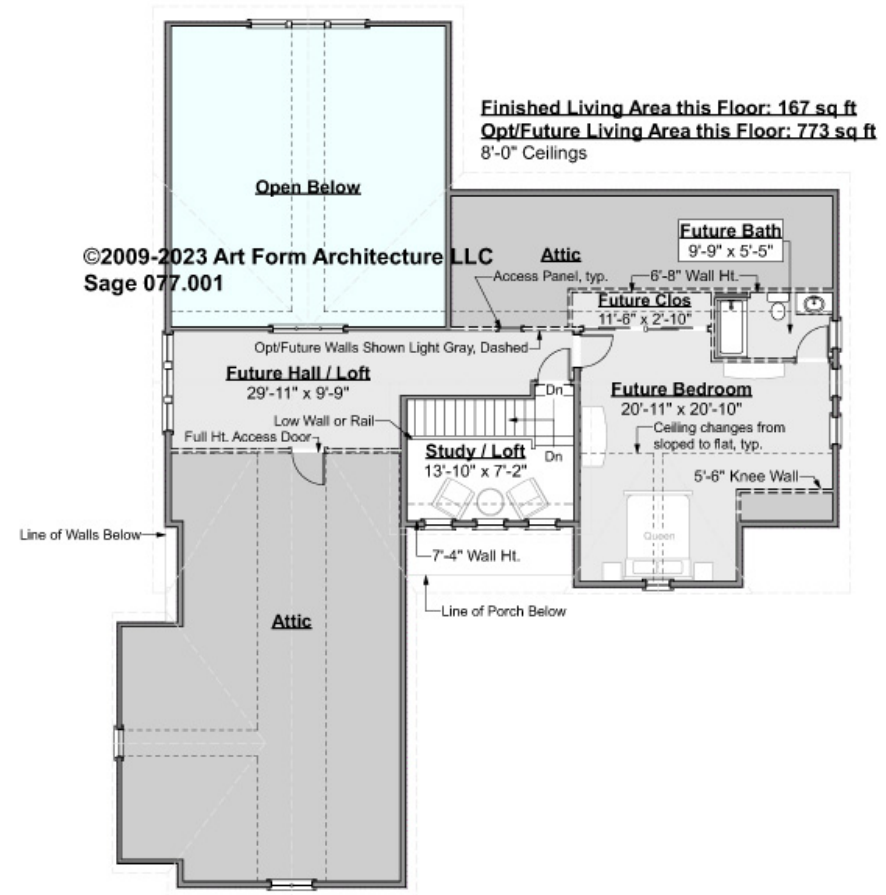
| F1 LIVING AREA       | 2035 <sup>FT</sup>    | F1 BEDROOMS          | 3    | F1 BATHROOMS         | 2.5  |
|----------------------|-----------------------|----------------------|------|----------------------|------|
| Main                 | 2035.00 <sup>FT</sup> | Main                 | 3.00 | Main                 | 2.50 |
| Future               | FT                    | Future               |      | Future               |      |
| 2 <sup>nd</sup> Unit | FT                    | 2 <sup>nd</sup> Unit |      | 2 <sup>nd</sup> Unit |      |



## SAGE - 2<sup>ND</sup> FLOOR

### 077.001

Some features shown are optional. Your Purchase & Sale Agreement governs, whether items are labeled "optional" in this document or not.



CLG HT SHOWN 8'-0"

CLG HT POSSIBLE 9'-0"

\* Major Change Fee, see website plan page for cost

| F1 LIVING AREA       |  | 940 <sup>FT</sup>    | F1 BEDROOMS          |  | 1    | F1 BATHROOMS         |  | 1    |
|----------------------|--|----------------------|----------------------|--|------|----------------------|--|------|
| Main                 |  | 167.00 <sup>FT</sup> | Main                 |  | 0.00 | Main                 |  | 0.00 |
| Future               |  | 773.00 <sup>FT</sup> | Future               |  | 1.00 | Future               |  | 1.00 |
| 2 <sup>nd</sup> Unit |  | FT                   | 2 <sup>nd</sup> Unit |  |      | 2 <sup>nd</sup> Unit |  |      |

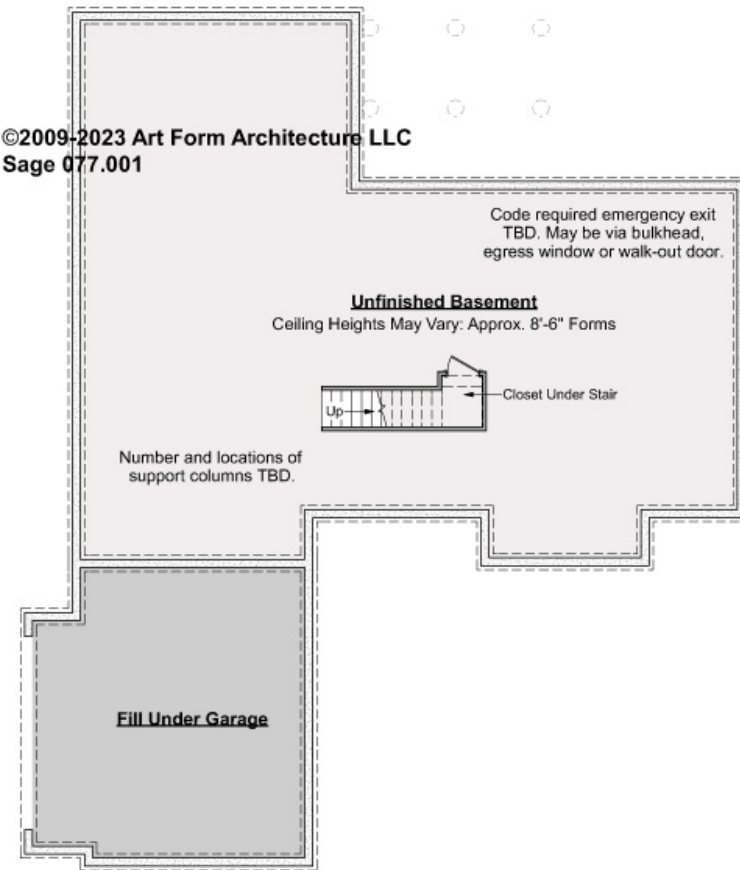


## SAGE - BASEMENT

### 077.001

Some features shown are optional. Your Purchase & Sale Agreement governs, whether items are labeled "optional" in this document or not.

©2009-2023 Art Form Architecture LLC  
Sage 077.001



CLG HT SHOWN 8'-1" - 8'-11"

CLG HT POSSIBLE 9'-0"

*\* Major Change Fee, see website plan page for cost*

| F1 LIVING AREA       |  | 0 <sup>FT</sup>    | F1 BEDROOMS          |  | 0    | F1 BATHROOMS         |  | 0    |
|----------------------|--|--------------------|----------------------|--|------|----------------------|--|------|
| Main                 |  | FT                 | Main                 |  | 0.00 | Main                 |  | 0.00 |
| Future               |  | 0.00 <sup>FT</sup> | Future               |  | 0.00 | Future               |  | 0.00 |
| 2 <sup>nd</sup> Unit |  | 0.00 <sup>FT</sup> | 2 <sup>nd</sup> Unit |  | 0.00 | 2 <sup>nd</sup> Unit |  | 0.00 |



Art Form Architecture, LLC

## SAGE - FRONT ELEVATION

### 077.001

Some features shown are optional. Your Purchase & Sale Agreement governs, whether items are labeled "optional" in this document or not.





Art Form Architecture, LLC

## SAGE - RIGHT ELEVATION

077.001

Some features shown are optional. Your Purchase & Sale Agreement governs, whether items are labeled "optional" in this document or not.





Art Form Architecture, LLC

## SAGE - REAR ELEVATION

077.001

Some features shown are optional. Your Purchase & Sale Agreement governs, whether items are labeled "optional" in this document or not.







Art Form Architecture, LLC

## SAGE - LEFT ELEVATION

077.001

Some features shown are optional. Your Purchase & Sale Agreement governs, whether items are labeled "optional" in this document or not.







Art Form Architecture, LLC

## SAGE - REAR RENDER

### 077.001

Some features shown are optional. Your Purchase & Sale Agreement governs, whether items are labeled "optional" in this document or not.

