



## POOL HOUSE

739.500.v5

In addition to our Terms and Conditions (the "Terms"), please be aware of the following:

Art Form Architecture, LLC ("Artform") requires that our Drawings be built substantially as designed. Artform will not be obligated by or liable for use of this design with markups as part of any builder agreement. While we attempt to accommodate where possible and reasonable, and where the changes do not denigrate our design, any and all changes to Drawings must be approved in writing by Artform. It is recommended that you have your Drawing updated by Artform prior to attaching any Drawing to any builder agreement. Artform shall not be responsible for the misuse of or unauthorized alterations to any of its Drawings.



Width 26.00 <sup>FT</sup>

Depth 47.00 <sup>FT</sup>

Height 0.00 <sup>FT</sup>

LIVING AREA	899 <sup>FT</sup>
Main	899 <sup>FT</sup>
Future	0 <sup>FT</sup>
2 <sup>nd</sup> Unit	0 <sup>FT</sup>

BEDROOMS	1
Main	1
Future	0
2 <sup>nd</sup> Unit	0

BATHROOMS	1
Main	1
Future	0
2 <sup>nd</sup> Unit	0



Art Form Architecture, LLC

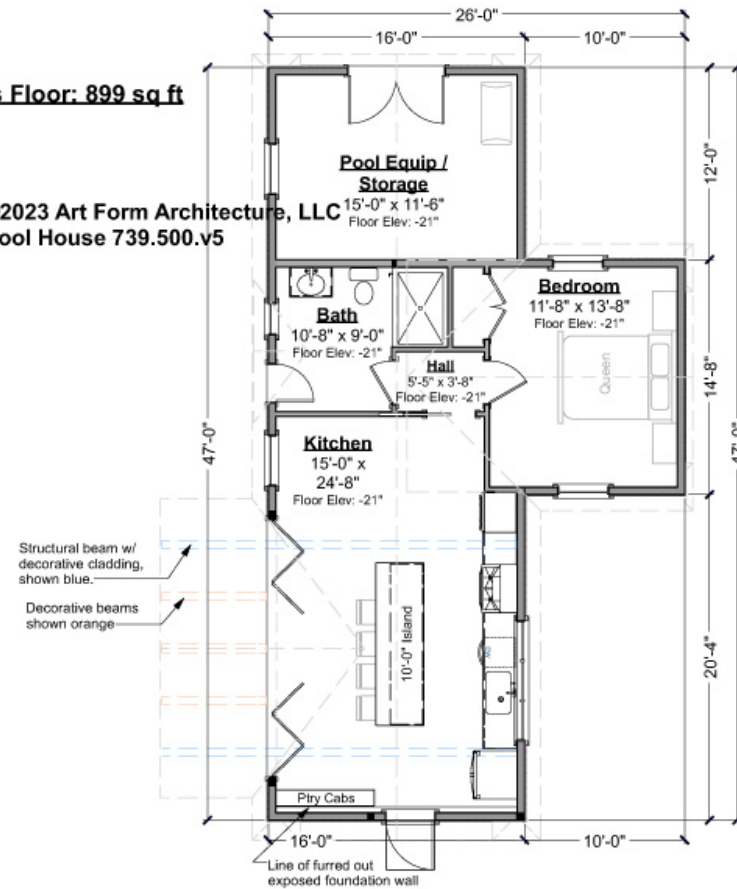
## POOL HOUSE - 1<sup>ST</sup> FLOOR

### 739.500.v5

Some features shown are optional. Your Purchase & Sale Agreement governs, whether items are labeled "optional" in this document or not.

**Finished Area This Floor: 899 sq ft**  
9 ft Ceilings

©2023 Art Form Architecture, LLC  
Pool House 739.500.v5



CLG HT SHOWN 9'-0"

CLG HT POSSIBLE 8'-0"

\* Major Change Fee, see website plan page for cost

F1 LIVING AREA		899 <sup>FT</sup>	F1 BEDROOMS		1	F1 BATHROOMS		1
Main		899.00 <sup>FT</sup>	Main		1.00	Main		1.00
Future		FT	Future			Future		
2 <sup>nd</sup> Unit		FT	2 <sup>nd</sup> Unit			2 <sup>nd</sup> Unit		

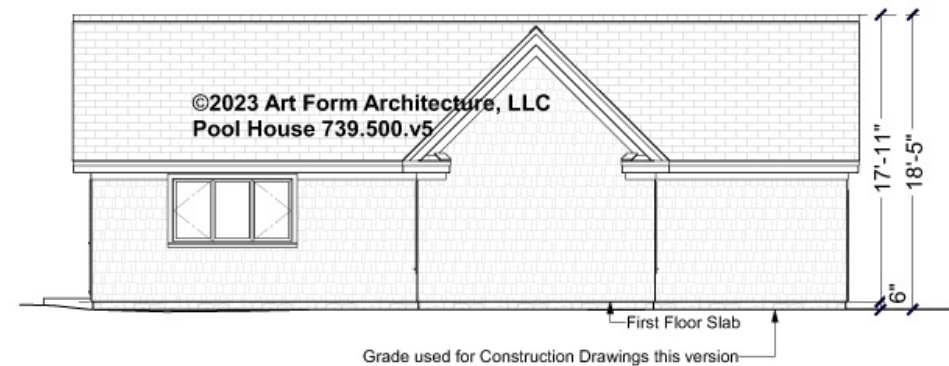


Art Form Architecture, LLC

## POOL HOUSE - FRONT & RIGHT ELEVATIONS

739.500.v5

Some features shown are optional. Your Purchase & Sale Agreement governs, whether items are labeled "optional" in this document or not.





Art Form Architecture, LLC

## POOL HOUSE - REAR & LEFT ELEVATIONS

739.500.v5

—  
Some features shown are optional. Your Purchase & Sale Agreement governs, whether items are labeled "optional" in this document or not.





Art Form Architecture, LLC

## POOL HOUSE - REAR RENDER

739.500.v5

Some features shown are optional. Your Purchase & Sale Agreement governs, whether items are labeled "optional" in this document or not.

