



Art Form Architecture, LLC

PARKIN

817.124.v4 GL

In addition to our Terms and Conditions (the "Terms"), please be aware of the following:

Art Form Architecture, LLC ("Artform") requires that our Drawings be built substantially as designed. Artform will not be obligated by or liable for use of this design with markups as part of any builder agreement. While we attempt to accommodate where possible and reasonable, and where the changes do not denigrate our design, any and all changes to Drawings must be approved in writing by Artform. It is recommended that you have your Drawing updated by Artform prior to attaching any Drawing to any builder agreement. Artform shall not be responsible for the misuse of or unauthorized alterations to any of its Drawings.



Width 58.00 ^{FT}

Depth 47.00 ^{FT}

Height 32.46 ^{FT}

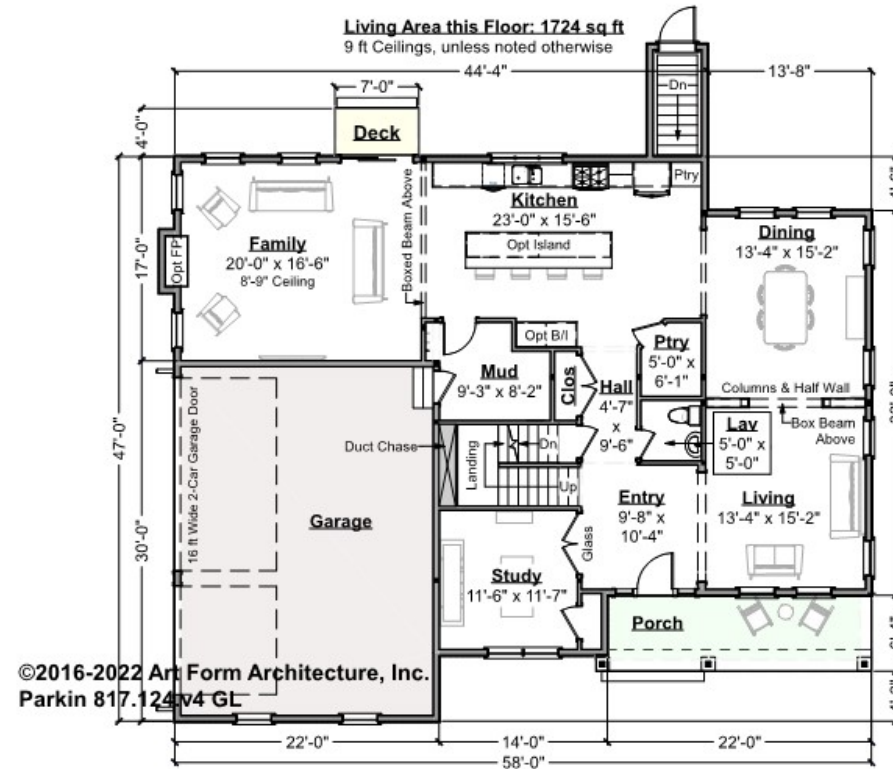
LIVING AREA		BEDROOMS		BATHROOMS	
	3550 ^{FT}		6		3.5
Main	3550 ^{FT}	Main	4	Main	3.5
Future	0 ^{FT}	Future	2	Future	0
2 nd Unit	0 ^{FT}	2 nd Unit	0	2 nd Unit	0



PARKIN - 1ST FLOOR

817.124.v4 GL

Some features shown are optional. Your Purchase & Sale Agreement governs, whether items are labeled "optional" in this document or not.



CLG HT SHOWN 9'-0"

CLG HT POSSIBLE 8'-0"

* Major Change Fee, see website plan page for cost

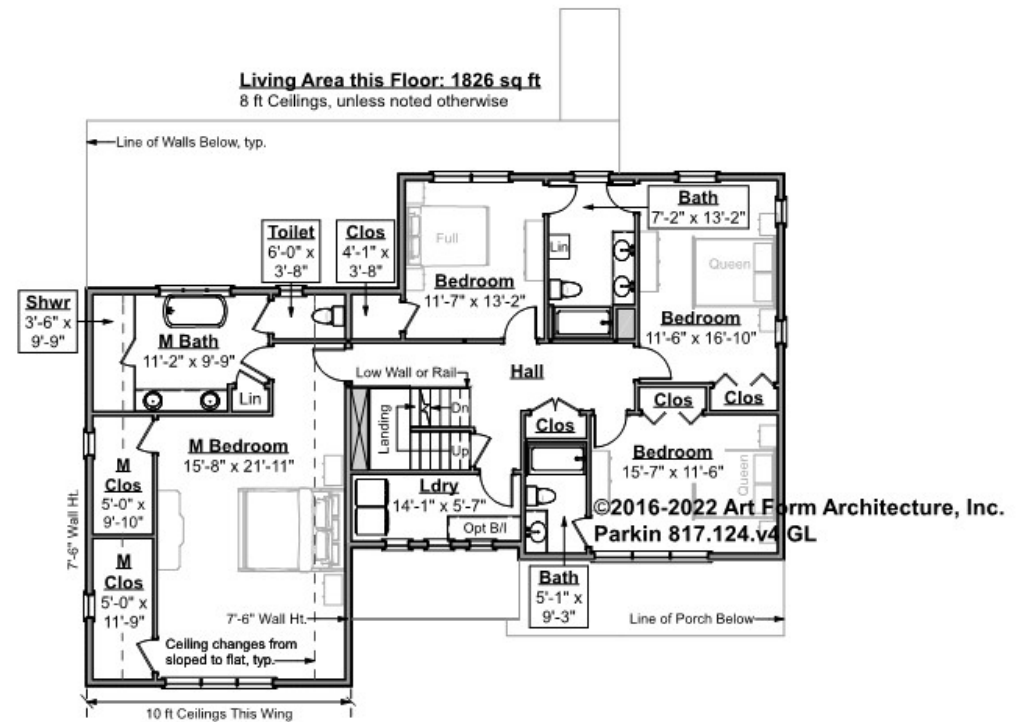
F1 LIVING AREA		1724 FT	F1 BEDROOMS		2	F1 BATHROOMS		0.5
Main		1724.00 FT	Main			Main		0.50
Future		FT	Future		2.00	Future		
2 nd Unit		FT	2 nd Unit			2 nd Unit		



PARKIN - 2ND FLOOR

817.124.v4 GL

Some features shown are optional. Your Purchase & Sale Agreement governs, whether items are labeled "optional" in this document or not.



CLG HT SHOWN 8'-0"

CLG HT POSSIBLE 9'-0"

* Major Change Fee, see website plan page for cost

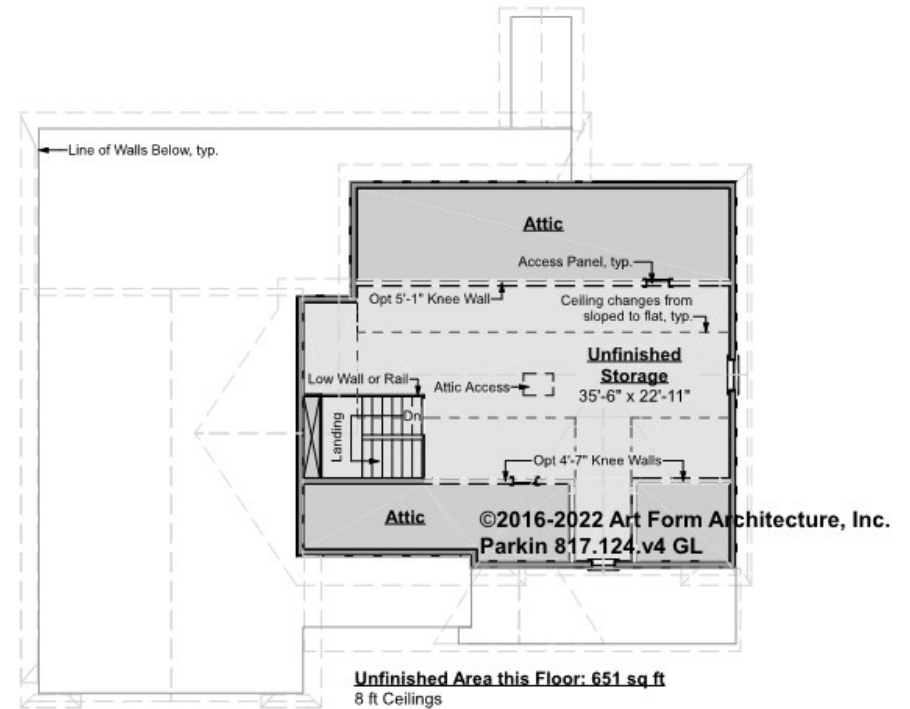
F1 LIVING AREA	1826 FT	F1 BEDROOMS	4	F1 BATHROOMS	3
Main	1826.00 FT	Main	4.00	Main	3.00
Future	FT	Future		Future	
2 nd Unit	FT	2 nd Unit		2 nd Unit	



PARKIN - 3RD FLOOR

817.124.v4 GL

Some features shown are optional. Your Purchase & Sale Agreement governs, whether items are labeled "optional" in this document or not.



CLG HT SHOWN 8'-0"

CLG HT POSSIBLE 8'-0"

* Major Change Fee, see website plan page for cost

F1 LIVING AREA		0 FT	F1 BEDROOMS		0	F1 BATHROOMS		0
Main		FT	Main			Main		
Future		FT	Future			Future		
2 nd Unit		FT	2 nd Unit			2 nd Unit		

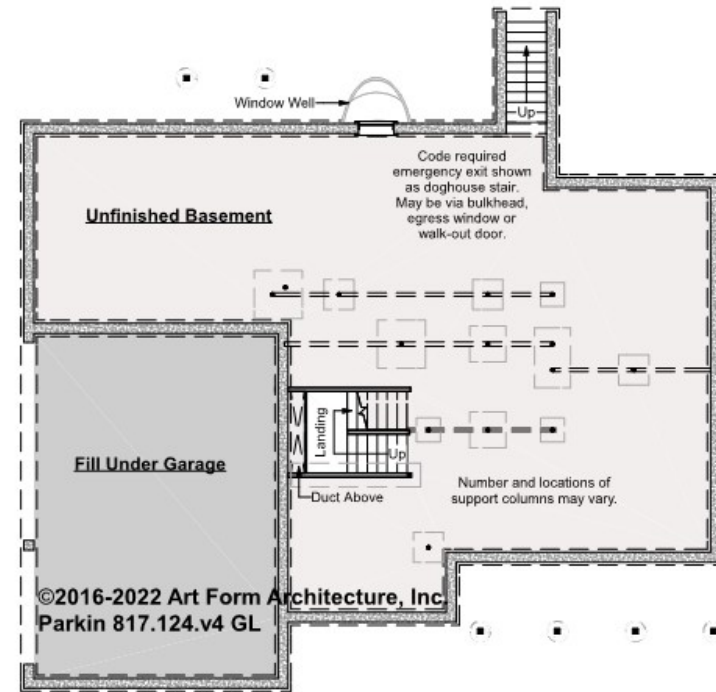


PARKIN - BASEMENT

817.124.v4 GL

Note: 10" thick foundation walls shown.

Some features shown are optional. Your Purchase & Sale Agreement governs, whether items are labeled "optional" in this document or not.



CLG HT SHOWN 7'-8"

CLG HT POSSIBLE 9'-0"

* Major Change Fee, see website plan page for cost

F1 LIVING AREA		0 FT	F1 BEDROOMS		0	F1 BATHROOMS		0
Main		FT	Main			Main		
Future		FT	Future			Future		
2 nd Unit		FT	2 nd Unit			2 nd Unit		

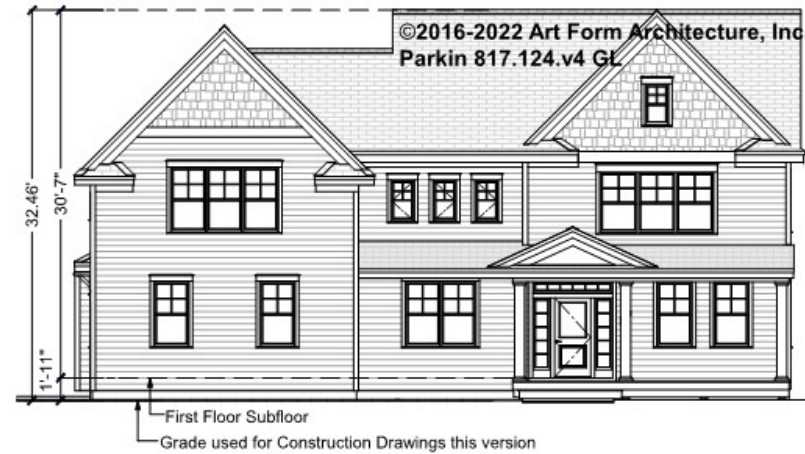


Art Form Architecture, LLC

PARKIN - FRONT ELEVATION

817.124.v4 GL

Some features shown are optional. Your Purchase & Sale Agreement governs, whether items are labeled "optional" in this document or not.





Art Form Architecture, LLC

PARKIN - RIGHT ELEVATION

817.124.v4 GL

Some features shown are optional. Your Purchase & Sale Agreement governs, whether items are labeled "optional" in this document or not.



Consult Code Officer
about applicability of 20
ft sill rule in NFPA 101.



Art Form Architecture, LLC

PARKIN - REAR ELEVATION

817.124.v4 GL

Some features shown are optional. Your Purchase & Sale Agreement governs, whether items are labeled "optional" in this document or not.





Art Form Architecture, LLC

PARKIN - LEFT ELEVATION

817.124.v4 GL

Some features shown are optional. Your Purchase & Sale Agreement governs, whether items are labeled "optional" in this document or not.





Art Form Architecture, LLC

PARKIN - REAR RENDER

817.124.v4 GL

—

Some features shown are optional. Your Purchase & Sale Agreement governs, whether items are labeled "optional" in this document or not.

