



Art Form Architecture, LLC

ORKNEY

959.124.v24 GL

In addition to our Terms and Conditions (the "Terms"), please be aware of the following:

Art Form Architecture, LLC ("Artform") requires that our Drawings be built substantially as designed. Artform will not be obligated by or liable for use of this design with markups as part of any builder agreement. While we attempt to accommodate where possible and reasonable, and where the changes do not denigrate our design, any and all changes to Drawings must be approved in writing by Artform. It is recommended that you have your Drawing updated by Artform prior to attaching any Drawing to any builder agreement. Artform shall not be responsible for the misuse of or unauthorized alterations to any of its Drawings.



Width 39.00 ^{FT}

Depth 42.27 ^{FT}

Height 27.25 ^{FT}

LIVING AREA		1951 ^{FT}	BEDROOMS		4	BATHROOMS		2.5
Main		1951 ^{FT}	Main		3	Main		2.5
Future		0 ^{FT}	Future		1	Future		0
2 nd Unit		0 ^{FT}	2 nd Unit		0	2 nd Unit		0



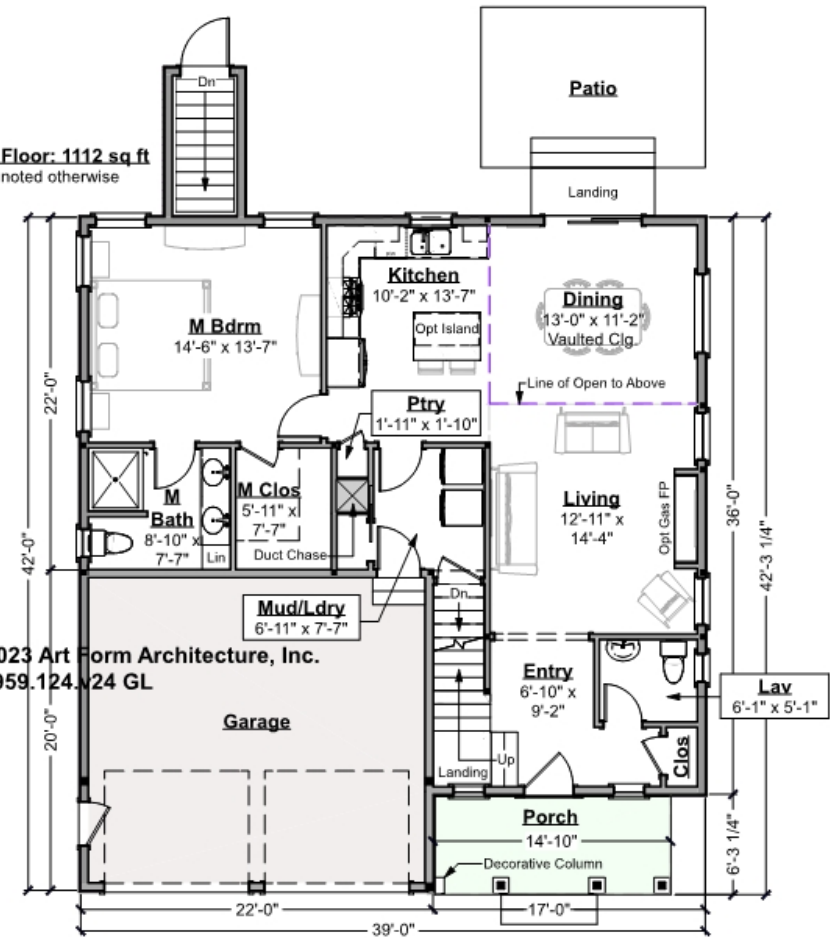
ORKNEY - 1ST FLOOR

959.124.v24 GL

Some features shown are optional. Your Purchase & Sale Agreement governs, whether items are labeled "optional" in this document or not.

Living Area this Floor: 1112 sq ft
9 ft Ceilings, unless noted otherwise

©2018-2023 Art Form Architecture, Inc.
Orkney 959.124.v24 GL



CLG HT SHOWN 9'-0"

CLG HT POSSIBLE 8'-0"

* Major Change Fee, see website plan page for cost

F1 LIVING AREA	1112 FT
Main	1112.00 FT
Future	FT
2 nd Unit	FT

F1 BEDROOMS	1
Main	1.00
Future	
2 nd Unit	

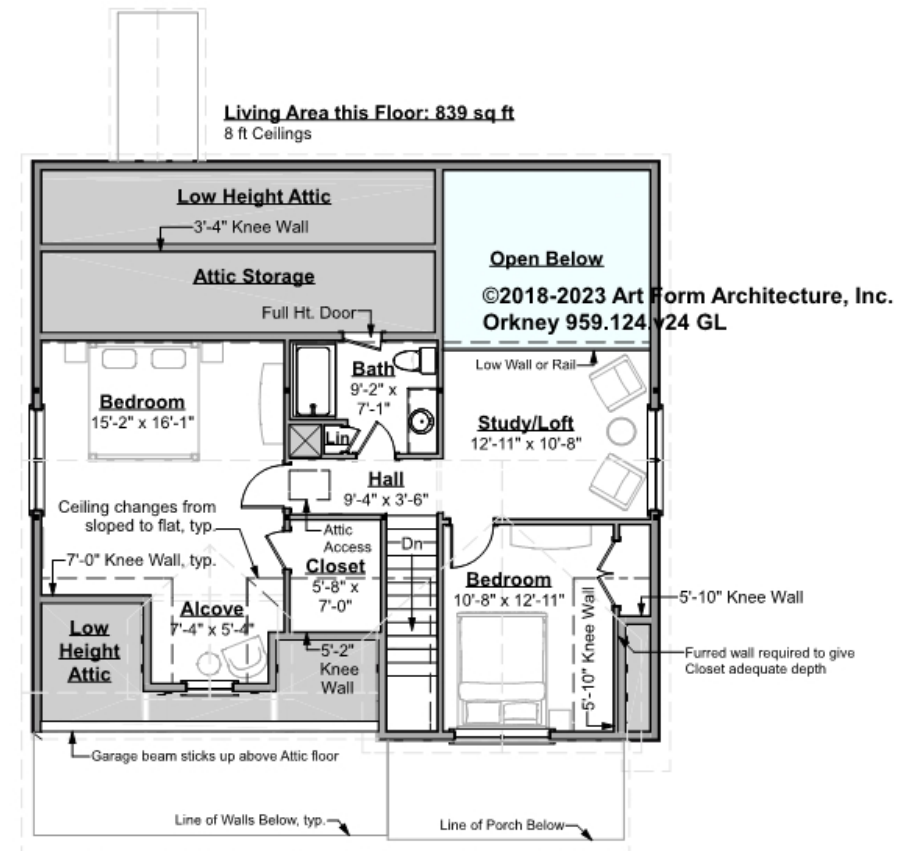
F1 BATHROOMS	1.5
Main	1.50
Future	
2 nd Unit	



ORKNEY - 2ND FLOOR

959.124.v24 GL

Some features shown are optional. Your Purchase & Sale Agreement governs, whether items are labeled "optional" in this document or not.



CLG HT SHOWN 8'-0"

CLG HT POSSIBLE 9'-0"

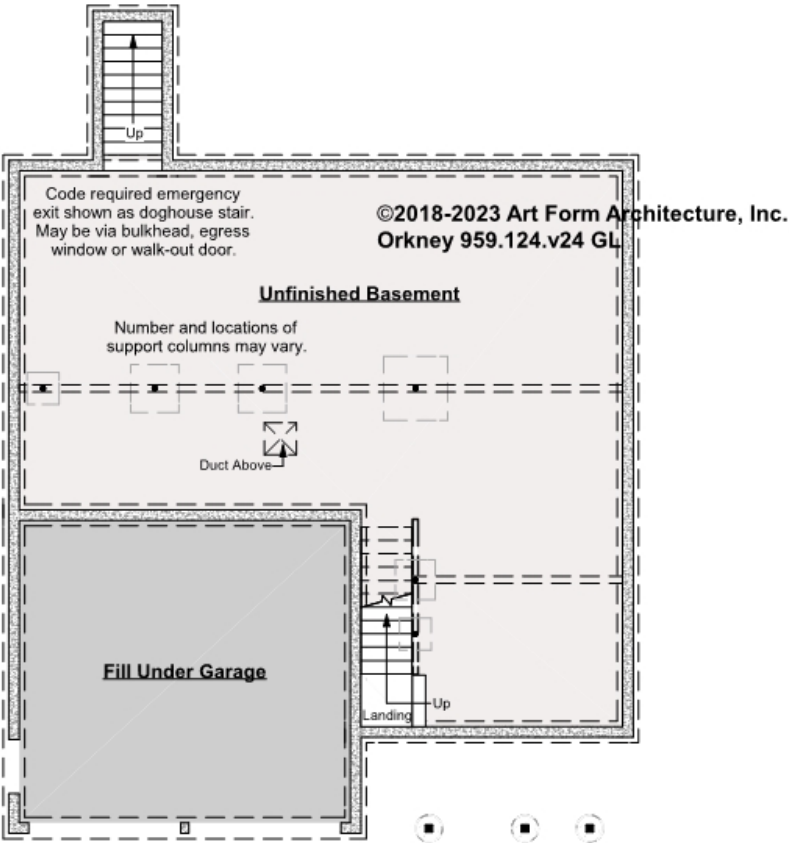
* Major Change Fee, see website plan page for cost

F1 LIVING AREA	839 ^{FT}	F1 BEDROOMS	3	F1 BATHROOMS	1
Main	839.00 ^{FT}	Main	2.00	Main	1.00
Future	FT	Future	1.00	Future	
2 nd Unit	FT	2 nd Unit		2 nd Unit	



ORKNEY - BASEMENT
959.124.v24 GL

Some features shown are optional. Your Purchase & Sale Agreement governs, whether items are labeled "optional" in this document or not.



CLG HT SHOWN 7'-8" CLG HT POSSIBLE 9'-0"

* Major Change Fee, see website plan page for cost

F1 LIVING AREA		0 FT	F1 BEDROOMS		0	F1 BATHROOMS		0
Main		FT	Main			Main		
Future		FT	Future			Future		
2 nd Unit		FT	2 nd Unit			2 nd Unit		



Art Form Architecture, LLC

ORKNEY - FRONT ELEVATION

959.124.v24 GL

Some features shown are optional. Your Purchase & Sale Agreement governs, whether items are labeled "optional" in this document or not.





Art Form Architecture, LLC

ORKNEY - RIGHT ELEVATION

959.124.v24 GL

Some features shown are optional. Your Purchase & Sale Agreement governs, whether items are labeled "optional" in this document or not.





Art Form Architecture, LLC

ORKNEY - REAR ELEVATION

959.124.v24 GL

Some features shown are optional. Your Purchase & Sale Agreement governs, whether items are labeled "optional" in this document or not.





Art Form Architecture, LLC

ORKNEY - LEFT ELEVATION

959.124.v24 GL

Some features shown are optional. Your Purchase & Sale Agreement governs, whether items are labeled "optional" in this document or not.

