



Art Form Architecture, LLC

## ORKNEY

959.124.v18 GL

In addition to our Terms and Conditions (the "Terms"), please be aware of the following:

Art Form Architecture, LLC ("Artform") requires that our Drawings be built substantially as designed. Artform will not be obligated by or liable for use of this design with markups as part of any builder agreement. While we attempt to accommodate where possible and reasonable, and where the changes do not denigrate our design, any and all changes to Drawings must be approved in writing by Artform. It is recommended that you have your Drawing updated by Artform prior to attaching any Drawing to any builder agreement. Artform shall not be responsible for the misuse of or unauthorized alterations to any of its Drawings.



Width 40.00 <sup>FT</sup>

Depth 55.00 <sup>FT</sup>

Height 28.17 <sup>FT</sup>

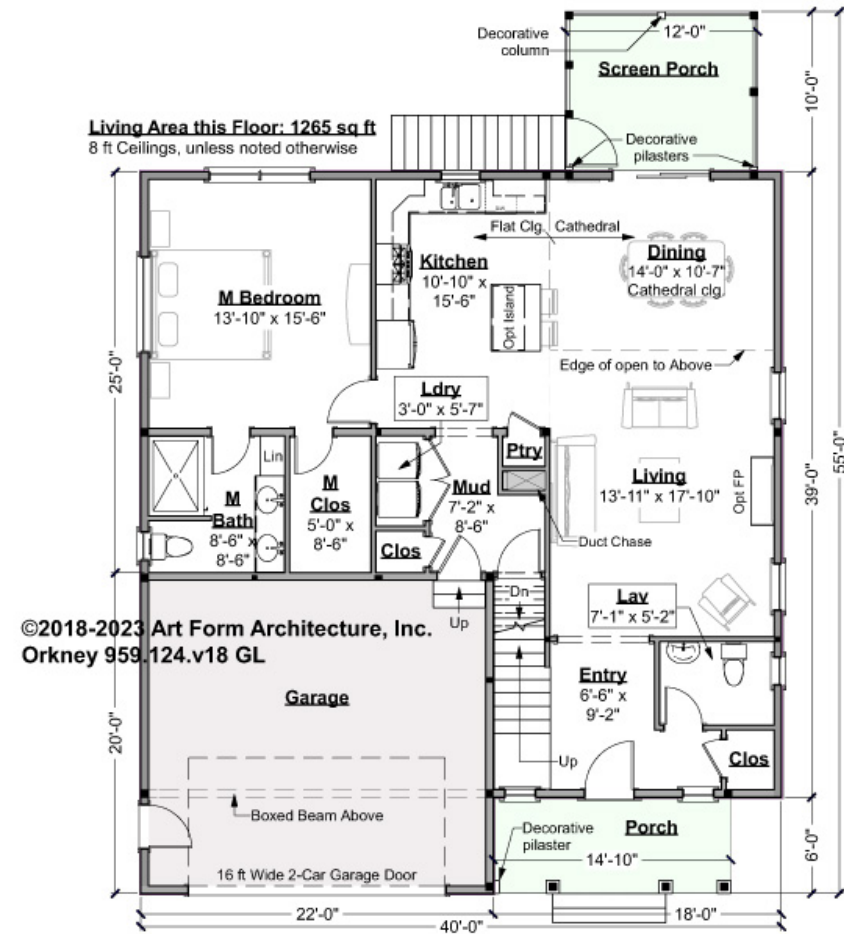
LIVING AREA		BEDROOMS		BATHROOMS	
	1997 <sup>FT</sup>		2		2.5
Main	1997 <sup>FT</sup>	Main	2	Main	2.5
Future	0 <sup>FT</sup>	Future	0	Future	0
2 <sup>nd</sup> Unit	0 <sup>FT</sup>	2 <sup>nd</sup> Unit	0	2 <sup>nd</sup> Unit	0



## ORKNEY - 1<sup>ST</sup> FLOOR

### 959.124.v18 GL

Some features shown are optional. Your Purchase & Sale Agreement governs, whether items are labeled "optional" in this document or not.



©2018-2023 Art Form Architecture, Inc.  
Orkney 959.124.v18 GL

CLG HT SHOWN 8'-0"

CLG HT POSSIBLE 9'-0"

\* Major Change Fee, see website plan page for cost

F1 LIVING AREA		1265 <sup>FT</sup>	F1 BEDROOMS		1	F1 BATHROOMS		1.5
Main		1265.00 <sup>FT</sup>	Main		1.00	Main		1.50
Future		FT	Future			Future		
2 <sup>nd</sup> Unit		FT	2 <sup>nd</sup> Unit			2 <sup>nd</sup> Unit		

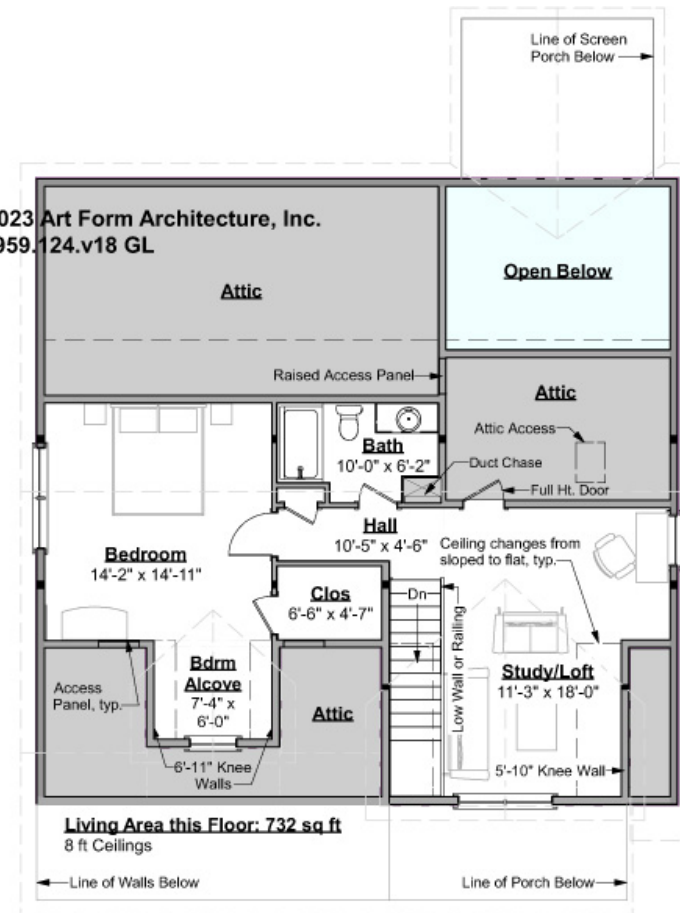


## ORKNEY - 2<sup>ND</sup> FLOOR

959.124.v18 GL

Some features shown are optional. Your Purchase & Sale Agreement governs, whether items are labeled "optional" in this document or not.

©2018-2023 Art Form Architecture, Inc.  
Orkney 959.124.v18 GL



CLG HT SHOWN 8'-0"

CLG HT POSSIBLE 9'-0"

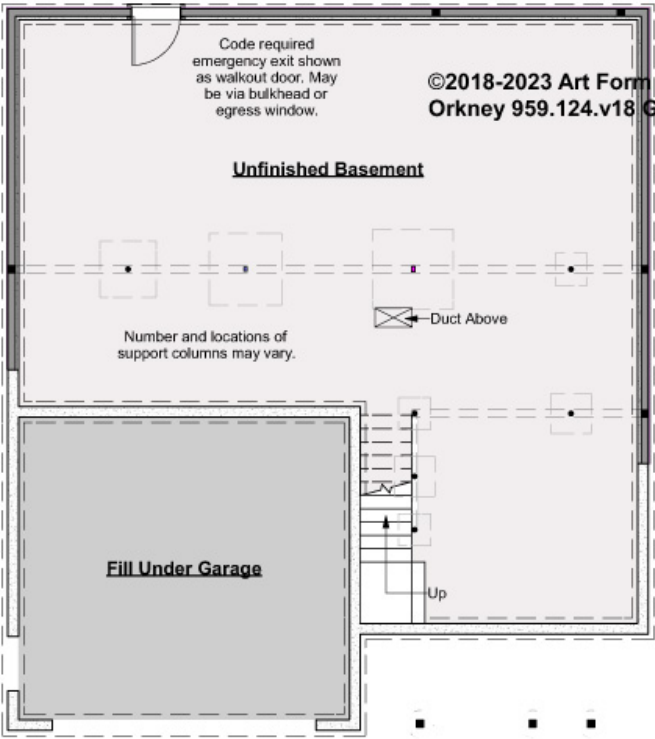
\* Major Change Fee, see website plan page for cost

F1 LIVING AREA	732 <sup>FT</sup>	F1 BEDROOMS	1	F1 BATHROOMS	1
Main	732.00 <sup>FT</sup>	Main	1.00	Main	1.00
Future	FT	Future	0.00	Future	
2 <sup>nd</sup> Unit	FT	2 <sup>nd</sup> Unit		2 <sup>nd</sup> Unit	



ORKNEY - BASEMENT  
959.124.v18 GL

Some features shown are optional. Your Purchase & Sale Agreement governs, whether items are labeled "optional" in this document or not.



CLG HT SHOWN 7'-8"      CLG HT POSSIBLE 9'-0"

\* Major Change Fee, see website plan page for cost

F1 LIVING AREA		0 FT	F1 BEDROOMS		0	F1 BATHROOMS		0
Main		FT	Main			Main		
Future		FT	Future			Future		
2 <sup>nd</sup> Unit		FT	2 <sup>nd</sup> Unit			2 <sup>nd</sup> Unit		

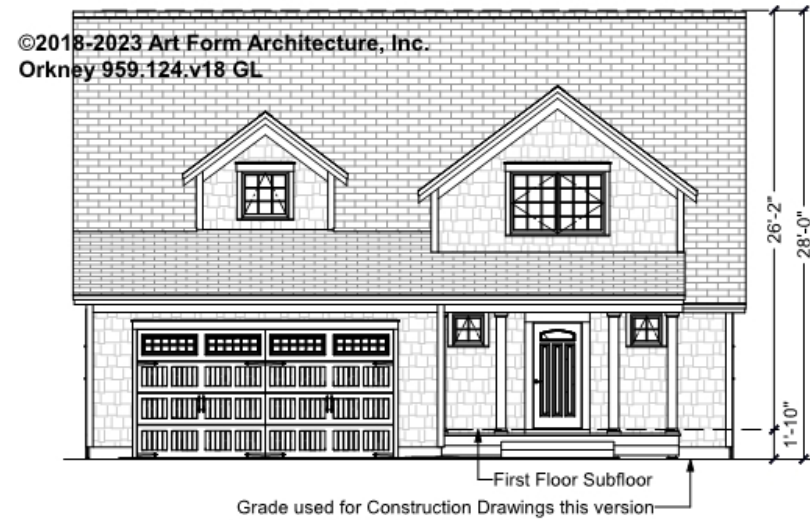


Art Form Architecture, LLC

## ORKNEY - FRONT ELEVATION

959.124.v18 GL

Some features shown are optional. Your Purchase & Sale Agreement governs, whether items are labeled "optional" in this document or not.





Art Form Architecture, LLC

## ORKNEY - RIGHT ELEVATION

959.124.v18 GL

Some features shown are optional. Your Purchase & Sale Agreement governs, whether items are labeled "optional" in this document or not.





Art Form Architecture, LLC

## ORKNEY - REAR ELEVATION

959.124.v18 GL

Some features shown are optional. Your Purchase & Sale Agreement governs, whether items are labeled "optional" in this document or not.





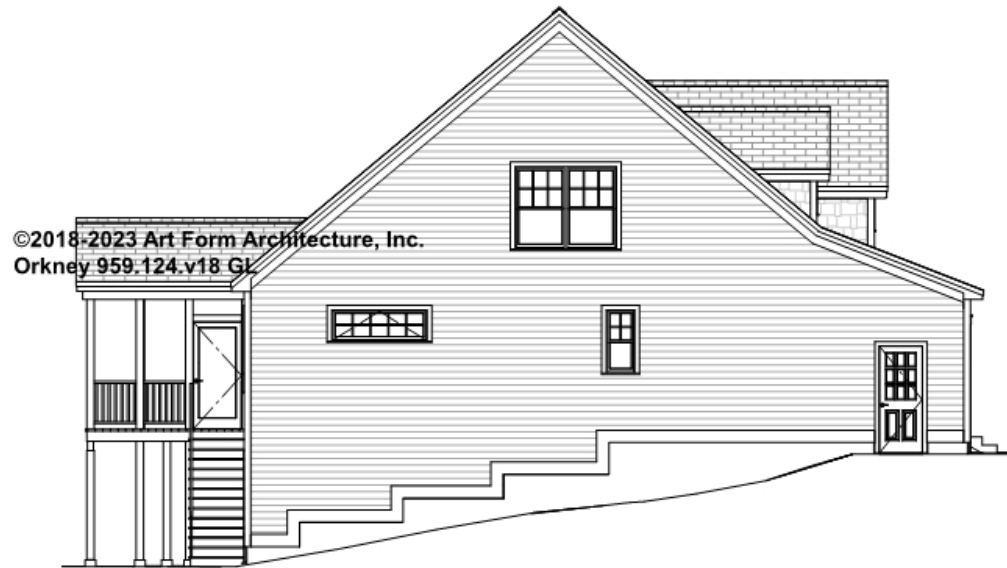


Art Form Architecture, LLC

## ORKNEY - LEFT ELEVATION

959.124.v18 GL

Some features shown are optional. Your Purchase & Sale Agreement governs, whether items are labeled "optional" in this document or not.







Art Form Architecture, LLC

## ORKNEY - REAR RENDER

959.124.v18 GL

Some features shown are optional. Your Purchase & Sale Agreement governs, whether items are labeled "optional" in this document or not.

