



Art Form Architecture, LLC

## ORKNEY 959.124.v12 GL

Snow load for this version of the Orkney design is 50 PSF.

—

In addition to our Terms and Conditions (the "Terms"), please be aware of the following:

Art Form Architecture, LLC ("Artform") requires that our Drawings be built substantially as designed. Artform will not be obligated by or liable for use of this design with markups as part of any builder agreement. While we attempt to accommodate where possible and reasonable, and where the changes do not denigrate our design, any and all changes to Drawings must be approved in writing by Artform. It is recommended that you have your Drawing updated by Artform prior to attaching any Drawing to any builder agreement. Artform shall not be responsible for the misuse of or unauthorized alterations to any of its Drawings.



Width 37.00 <sup>FT</sup>

Depth 52.25 <sup>FT</sup>

Height 26.25 <sup>FT</sup>

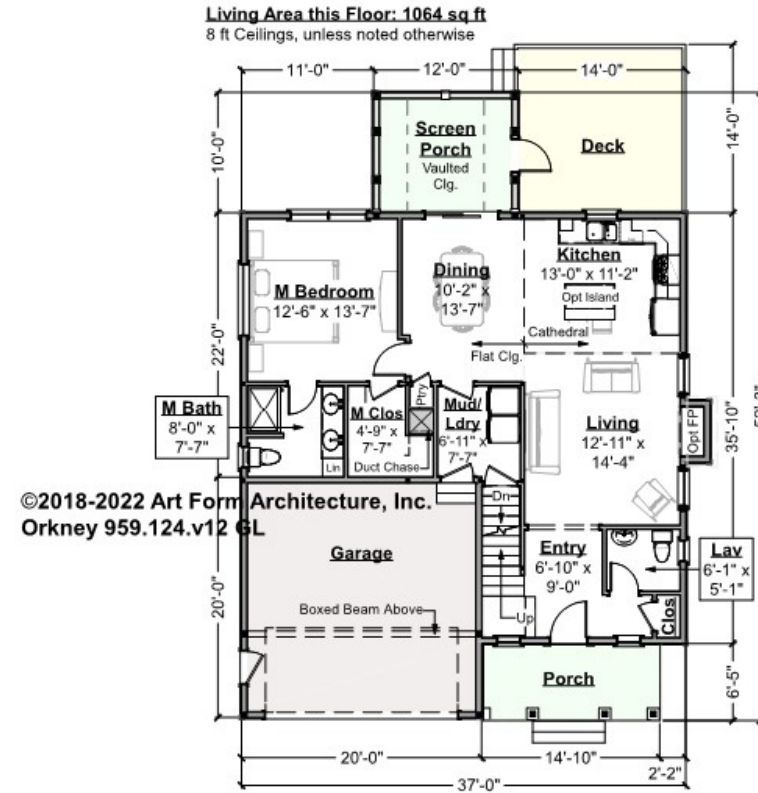
LIVING AREA		BEDROOMS		BATHROOMS	
	1862 <sup>FT</sup>		2		2.5
Main	1862 <sup>FT</sup>	Main	2	Main	2.5
Future	0 <sup>FT</sup>	Future	0	Future	0
2 <sup>nd</sup> Unit	0 <sup>FT</sup>	2 <sup>nd</sup> Unit	0	2 <sup>nd</sup> Unit	0



## ORKNEY - 1<sup>ST</sup> FLOOR

### 959.124.v12 GL

Some features shown are optional. Your Purchase & Sale Agreement governs, whether items are labeled "optional" in this document or not.



CLG HT SHOWN 8'-0"

CLG HT POSSIBLE 8'-0"

\* Major Change Fee, see website plan page for cost

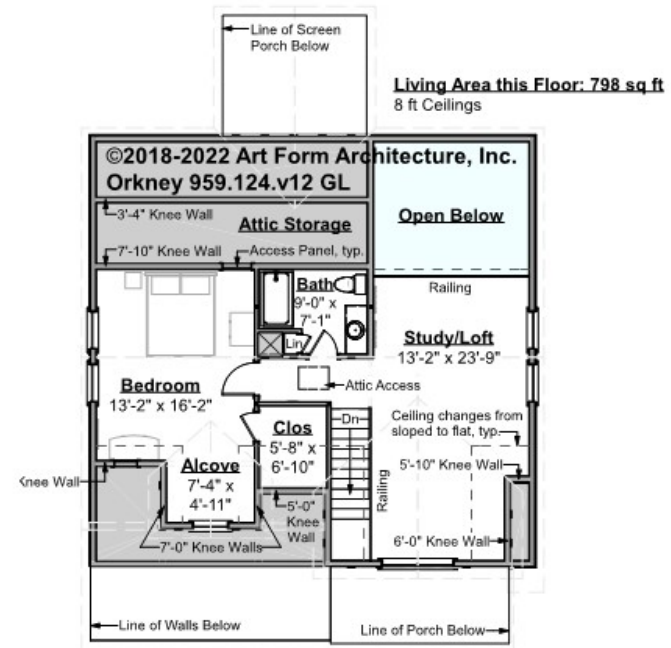
F1 LIVING AREA	1064 FT	F1 BEDROOMS	1	F1 BATHROOMS	1.5
Main	1064.00 FT	Main	1.00	Main	1.50
Future	FT	Future		Future	
2 <sup>nd</sup> Unit	FT	2 <sup>nd</sup> Unit		2 <sup>nd</sup> Unit	



## ORKNEY - 2<sup>ND</sup> FLOOR

### 959.124.v12 GL

Some features shown are optional. Your Purchase & Sale Agreement governs, whether items are labeled "optional" in this document or not.



CLG HT SHOWN 8'-0"

CLG HT POSSIBLE 9'-0"

\* Major Change Fee, see website plan page for cost

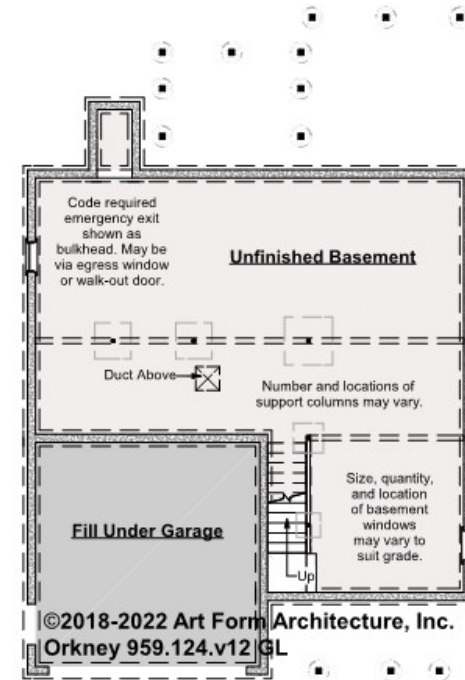
F1 LIVING AREA	798 <sup>FT</sup>	F1 BEDROOMS	1	F1 BATHROOMS	1
Main	798.00 <sup>FT</sup>	Main	1.00	Main	1.00
Future	FT	Future		Future	
2 <sup>nd</sup> Unit	FT	2 <sup>nd</sup> Unit		2 <sup>nd</sup> Unit	



## ORKNEY - BASEMENT

959.124.v12 GL

Some features shown are optional. Your Purchase & Sale Agreement governs, whether items are labeled "optional" in this document or not.



CLG HT SHOWN 7'-8"

CLG HT POSSIBLE 9'-0"

\* Major Change Fee, see website plan page for cost

F1 LIVING AREA		0 FT	F1 BEDROOMS		0	F1 BATHROOMS		0
Main		FT	Main			Main		
Future		FT	Future			Future		
2 <sup>nd</sup> Unit		FT	2 <sup>nd</sup> Unit			2 <sup>nd</sup> Unit		



Art Form Architecture, LLC

## ORKNEY - FRONT ELEVATION

### 959.124.v12 GL

Some features shown are optional. Your Purchase & Sale Agreement governs, whether items are labeled "optional" in this document or not.





Art Form Architecture, LLC

## ORKNEY - RIGHT ELEVATION

959.124.v12 GL

Some features shown are optional. Your Purchase & Sale Agreement governs, whether items are labeled "optional" in this document or not.







Art Form Architecture, LLC

## ORKNEY - REAR ELEVATION

959.124.v12 GL

Some features shown are optional. Your Purchase & Sale Agreement governs, whether items are labeled "optional" in this document or not.





Art Form Architecture, LLC

## ORKNEY - LEFT ELEVATION

959.124.v12 GL

Some features shown are optional. Your Purchase & Sale Agreement governs, whether items are labeled "optional" in this document or not.







Art Form Architecture, LLC

## ORKNEY - REAR RENDER

959.124.v12 GL

—  
Some features shown are optional. Your Purchase & Sale Agreement governs, whether items are labeled "optional" in this document or not.

