



Art Form Architecture, LLC

## OPAL MARQUISE CLASSIC

370.124.v17 GL

In addition to our Terms and Conditions (the "Terms"), please be aware of the following:

Art Form Architecture, LLC ("Artform") requires that our Drawings be built substantially as designed. Artform will not be obligated by or liable for use of this design with markups as part of any builder agreement. While we attempt to accommodate where possible and reasonable, and where the changes do not denigrate our design, any and all changes to Drawings must be approved in writing by Artform. It is recommended that you have your Drawing updated by Artform prior to attaching any Drawing to any builder agreement. Artform shall not be responsible for the misuse of or unauthorized alterations to any of its Drawings.



Width 50.00 <sup>FT</sup>

Depth 30.08 <sup>FT</sup>

Height 26.42 <sup>FT</sup>

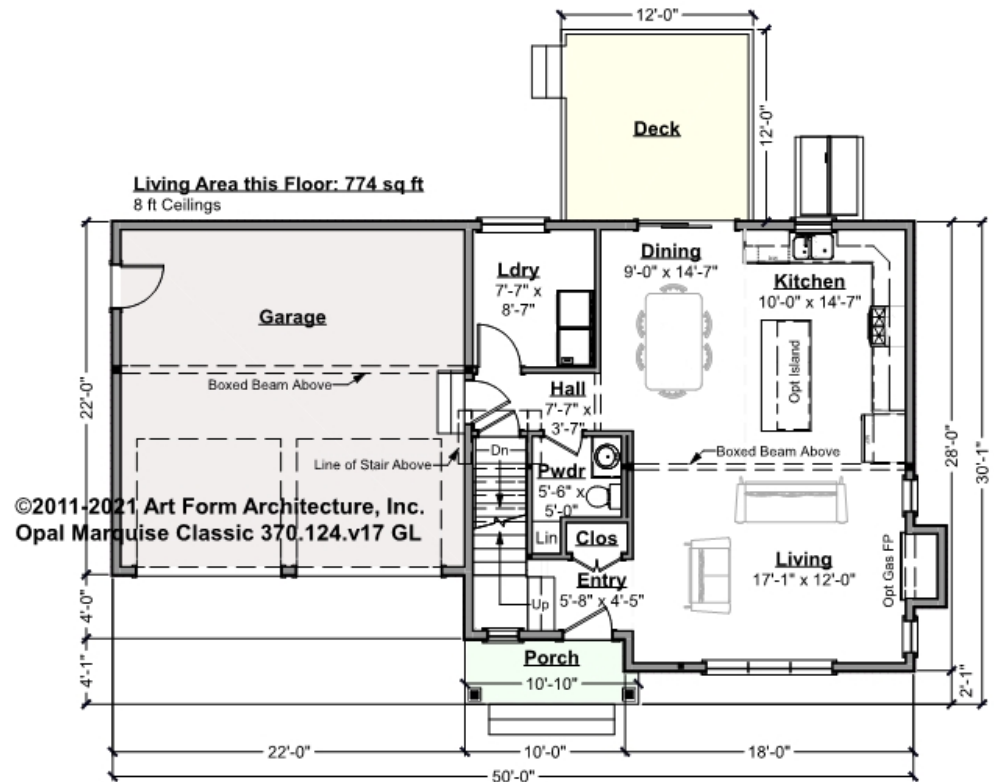
LIVING AREA		BEDROOMS		BATHROOMS	
	1778 <sup>FT</sup>		4		2.5
Main	1530 <sup>FT</sup>	Main	3	Main	2.5
Future	248 <sup>FT</sup>	Future	1	Future	0
2 <sup>nd</sup> Unit	0 <sup>FT</sup>	2 <sup>nd</sup> Unit	0	2 <sup>nd</sup> Unit	0



## OPAL MARQUISE CLASSIC - 1<sup>ST</sup> FLOOR 370.124.v17 GL

Yes, we "could" make this a 9 ft ceiling, but, BUT - would need to add 2 stair treads at both legs at top of stairs. That will then make the garage door opener a little more interesting...

Some features shown are optional. Your Purchase & Sale Agreement governs, whether items are labeled "optional" in this document or not.



CLG HT SHOWN 8'-0"

CLG HT POSSIBLE 8'-0"

\* Major Change Fee, see website plan page for cost

**F1 LIVING AREA** 774 <sup>FT</sup>

Main 774.00 <sup>FT</sup>

Future 0.00 <sup>FT</sup>

2<sup>nd</sup> Unit 0.00 <sup>FT</sup>

**F1 BEDROOMS** 0

Main 0.00

Future 0.00

2<sup>nd</sup> Unit 0.00

**F1 BATHROOMS** 0.5

Main 0.50

Future 0.00

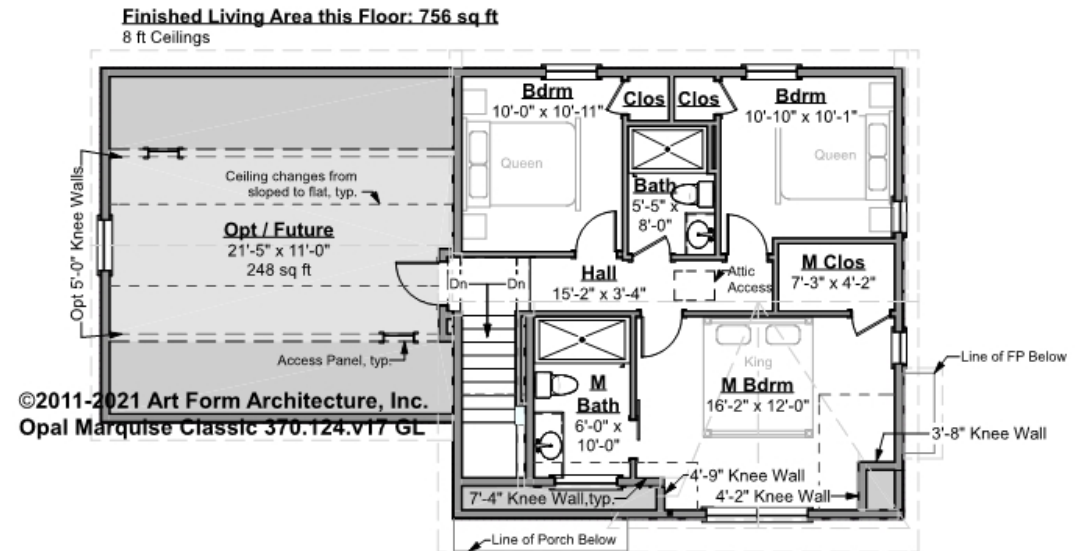
2<sup>nd</sup> Unit 0.00



## OPAL MARQUISE CLASSIC - 2<sup>ND</sup> FLOOR

370.124.v17 GL

Some features shown are optional. Your Purchase & Sale Agreement governs, whether items are labeled "optional" in this document or not.



CLG HT SHOWN 8'-0"

CLG HT POSSIBLE 9'-0"

\* Major Change Fee, see website plan page for cost

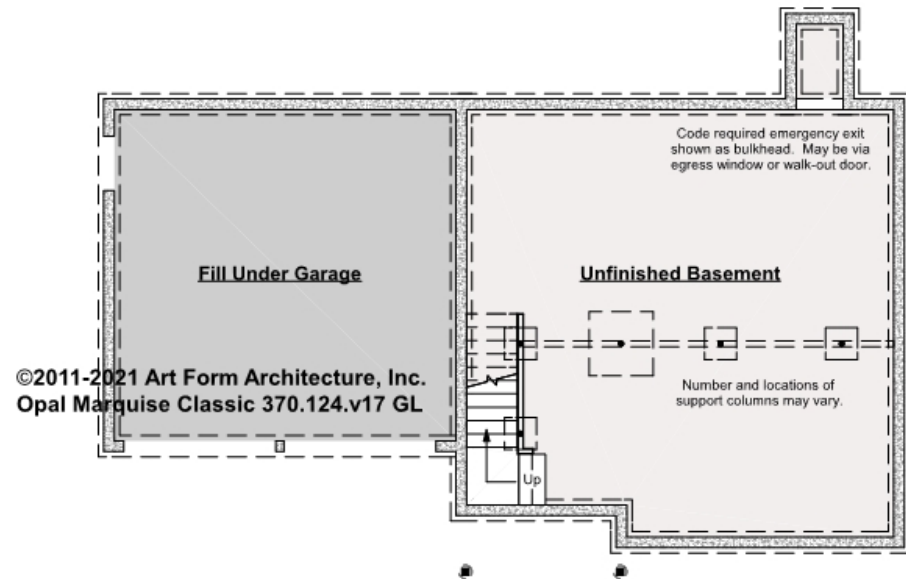
F1 LIVING AREA	1004 <sup>FT</sup>	F1 BEDROOMS	4	F1 BATHROOMS	2
Main	756.00 <sup>FT</sup>	Main	3.00	Main	2.00
Future	248.00 <sup>FT</sup>	Future	1.00	Future	0.00
2 <sup>nd</sup> Unit	0.00 <sup>FT</sup>	2 <sup>nd</sup> Unit	0.00	2 <sup>nd</sup> Unit	0.00



## OPAL MARQUISE CLASSIC - BASEMENT

370.124.v17 GL

Some features shown are optional. Your Purchase & Sale Agreement governs, whether items are labeled "optional" in this document or not.



CLG HT SHOWN 7'-8"

CLG HT POSSIBLE 9'-0"

\* Major Change Fee, see website plan page for cost

F1 LIVING AREA		0 FT	F1 BEDROOMS		0	F1 BATHROOMS		0
Main		0.00 FT	Main		0.00	Main		0.00
Future		0.00 FT	Future		0.00	Future		0.00
2 <sup>nd</sup> Unit		0.00 FT	2 <sup>nd</sup> Unit		0.00	2 <sup>nd</sup> Unit		0.00

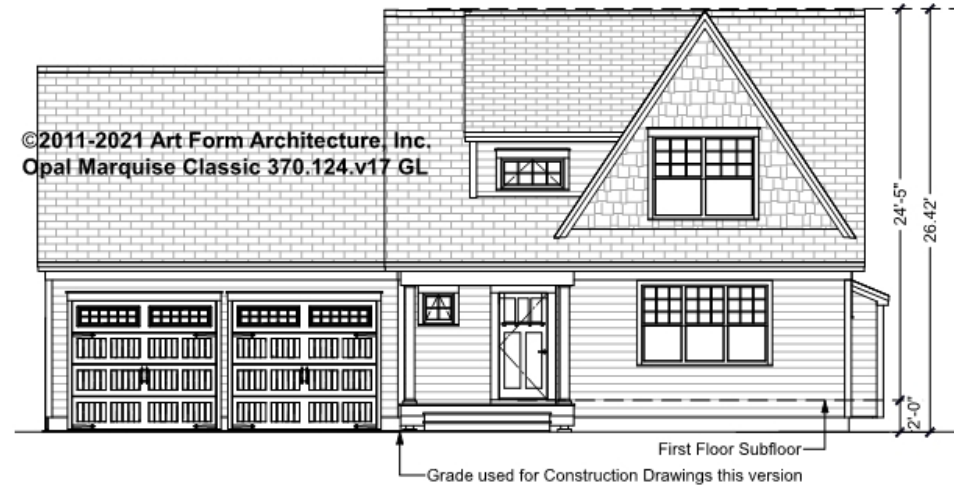


Art Form Architecture, LLC

## OPAL MARQUISE CLASSIC - FRONT ELEVATION

370.124.v17 GL

Some features shown are optional. Your Purchase & Sale Agreement governs, whether items are labeled "optional" in this document or not.



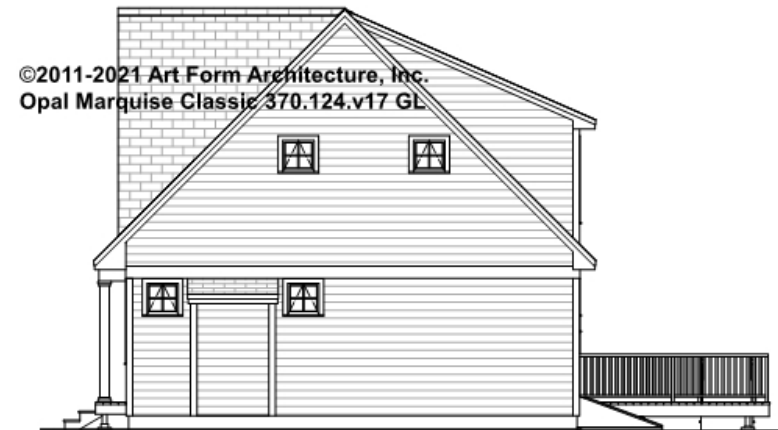


Art Form Architecture, LLC

## OPAL MARQUISE CLASSIC - RIGHT ELEVATION

370.124.v17 GL

Some features shown are optional. Your Purchase & Sale Agreement governs, whether items are labeled "optional" in this document or not.





Art Form Architecture, LLC

## OPAL MARQUISE CLASSIC - REAR ELEVATION

370.124.v17 GL

—  
Some features shown are optional. Your Purchase & Sale Agreement governs, whether items are labeled "optional" in this document or not.







Art Form Architecture, LLC

## OPAL MARQUISE CLASSIC - LEFT ELEVATION

370.124.v17 GL

—  
Some features shown are optional. Your Purchase & Sale Agreement governs, whether items are labeled "optional" in this document or not.







Art Form Architecture, LLC

## OPAL MARQUISE CLASSIC - REAR RENDER

370.124.v17 GL

—  
Some features shown are optional. Your Purchase & Sale Agreement governs, whether items are labeled "optional" in this document or not.

