



Art Form Architecture, LLC

## NORTHLIGHT EXPANDED

253.122.v12 GR

In addition to our Terms and Conditions (the "Terms"), please be aware of the following:

Art Form Architecture, LLC ("Artform") requires that our Drawings be built substantially as designed. Artform will not be obligated by or liable for use of this design with markups as part of any builder agreement. While we attempt to accommodate where possible and reasonable, and where the changes do not denigrate our design, any and all changes to Drawings must be approved in writing by Artform. It is recommended that you have your Drawing updated by Artform prior to attaching any Drawing to any builder agreement. Artform shall not be responsible for the misuse of or unauthorized alterations to any of its Drawings.



Width 42.00 <sup>FT</sup>

Depth 31.00 <sup>FT</sup>

Height 28.16 <sup>FT</sup>

LIVING AREA	2044 <sup>FT</sup>
Main	2044 <sup>FT</sup>
Future	0 <sup>FT</sup>
2 <sup>nd</sup> Unit	0 <sup>FT</sup>

BEDROOMS	3
Main	3
Future	0
2 <sup>nd</sup> Unit	0

BATHROOMS	2.5
Main	2.5
Future	0
2 <sup>nd</sup> Unit	0

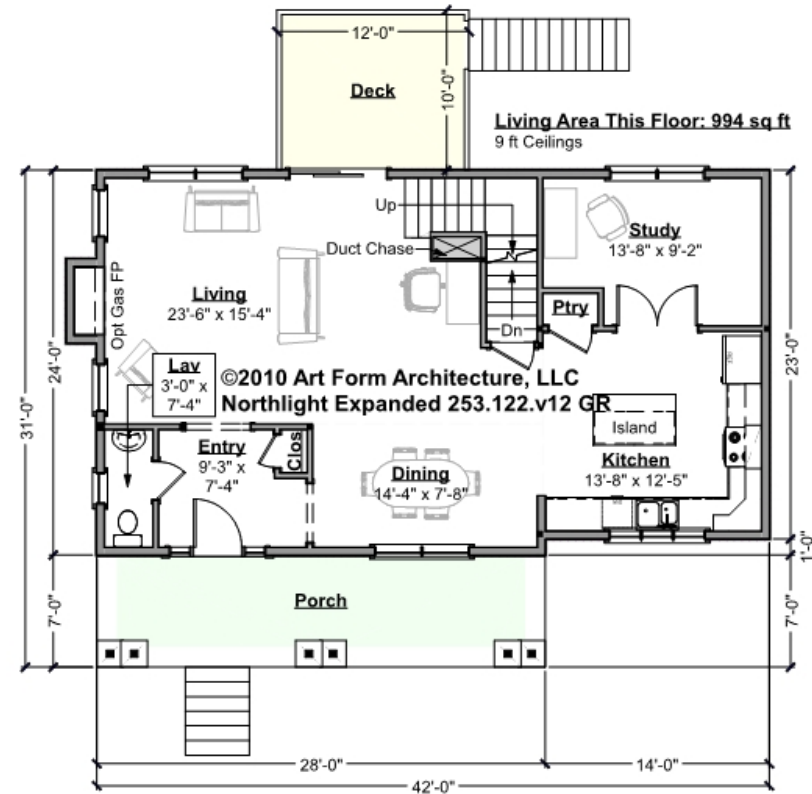


Art Form Architecture, LLC

## NORTHLIGHT EXPANDED - 1<sup>ST</sup> FLOOR

### 253.122.v12 GR

Some features shown are optional. Your Purchase & Sale Agreement governs, whether items are labeled "optional" in this document or not.



CLG HT SHOWN 9'-0"

CLG HT POSSIBLE 8'-0"

\* Major Change Fee, see website plan page for cost

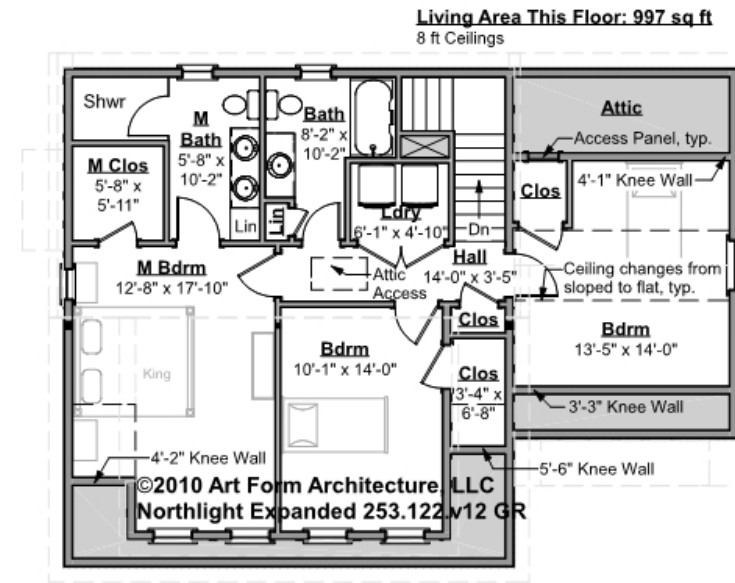
F1 LIVING AREA		994 <sup>FT</sup>	F1 BEDROOMS		0	F1 BATHROOMS		0.5
Main		994.00 <sup>FT</sup>	Main			Main		0.50
Future		FT	Future			Future		
2 <sup>nd</sup> Unit		FT	2 <sup>nd</sup> Unit			2 <sup>nd</sup> Unit		



## NORTHLIGHT EXPANDED - 2<sup>ND</sup> FLOOR

### 253.122.v12 GR

Some features shown are optional. Your Purchase & Sale Agreement governs, whether items are labeled "optional" in this document or not.



CLG HT SHOWN 8'-0"

CLG HT POSSIBLE 9'-0"

\* Major Change Fee, see website plan page for cost

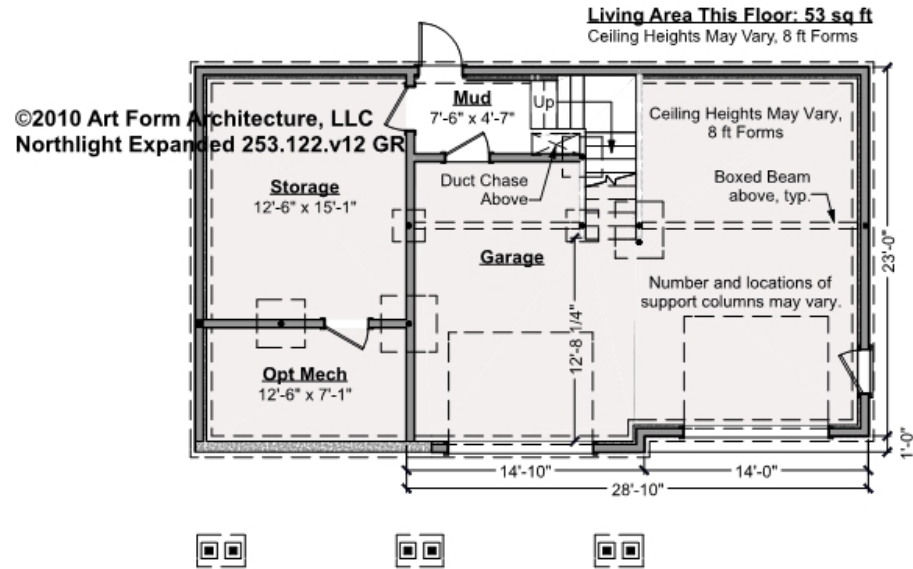
F1 LIVING AREA		997 <sup>FT</sup>	F1 BEDROOMS		3	F1 BATHROOMS		2
Main		997.00 <sup>FT</sup>	Main		3.00	Main		2.00
Future		FT	Future			Future		
2 <sup>nd</sup> Unit		FT	2 <sup>nd</sup> Unit			2 <sup>nd</sup> Unit		



## NORTHLIGHT EXPANDED - BASEMENT

### 253.122.v12 GR

Some features shown are optional. Your Purchase & Sale Agreement governs, whether items are labeled "optional" in this document or not.



CLG HT SHOWN 7'-8"

CLG HT POSSIBLE 9'-0"

\* Major Change Fee, see website plan page for cost

#### F1 LIVING AREA

53 FT

Main

53.00 FT

Future

FT

2<sup>nd</sup> Unit

FT

#### F1 BEDROOMS

0

Main

Future

2<sup>nd</sup> Unit

#### F1 BATHROOMS

0

Main

Future

2<sup>nd</sup> Unit



Art Form Architecture, LLC

## NORTHLIGHT EXPANDED - FRONT ELEVATION

253.122.v12 GR

Some features shown are optional. Your Purchase & Sale Agreement governs, whether items are labeled "optional" in this document or not.



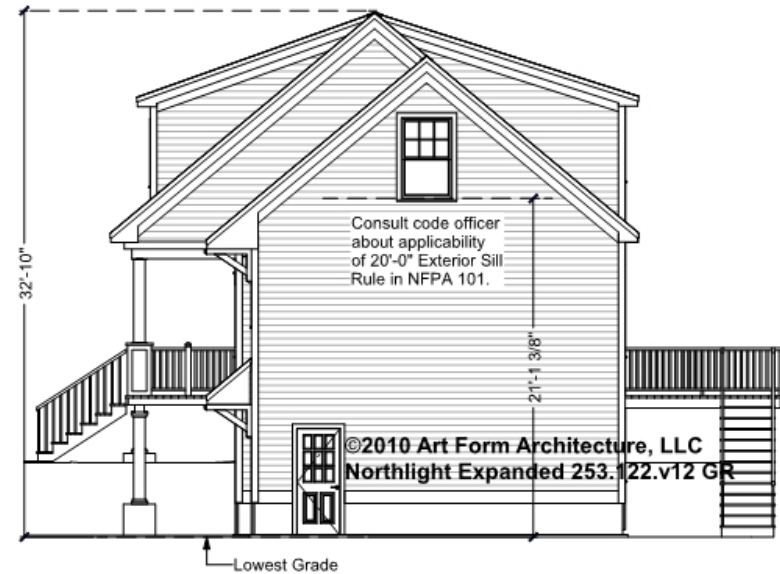


Art Form Architecture, LLC

## NORTHLIGHT EXPANDED - RIGHT ELEVATION

253.122.v12 GR

Some features shown are optional. Your Purchase & Sale Agreement governs, whether items are labeled "optional" in this document or not.





Art Form Architecture, LLC

## NORTHLIGHT EXPANDED - REAR ELEVATION

253.122.v12 GR

—  
Some features shown are optional. Your Purchase & Sale Agreement governs, whether items are labeled "optional" in this document or not.







Art Form Architecture, LLC

## NORTHLIGHT EXPANDED - LEFT ELEVATION

253.122.v12 GR

—  
Some features shown are optional. Your Purchase & Sale Agreement governs, whether items are labeled "optional" in this document or not.







Art Form Architecture, LLC

## NORTHLIGHT EXPANDED - REAR RENDER

253.122.v12 GR

—  
Some features shown are optional. Your Purchase & Sale Agreement governs, whether items are labeled "optional" in this document or not.

