



Art Form Architecture, LLC

NEVILLE TRIPLEX

946.320

Note that square footage listed under the "main" living area, as well as the number of bedrooms and bathrooms, are totals for all units and floors.

For individual unit areas, please refer to the floor plan images.

—

In addition to our Terms and Conditions (the "Terms"), please be aware of the following:

Art Form Architecture, LLC ("Artform") requires that our Drawings be built substantially as designed. Artform will not be obligated by or liable for use of this design with markups as part of any builder agreement. While we attempt to accommodate where possible and reasonable, and where the changes do not denigrate our design, any and all changes to Drawings must be approved in writing by Artform. It is recommended that you have your Drawing updated by Artform prior to attaching any Drawing to any builder agreement. Artform shall not be responsible for the misuse of or unauthorized alterations to any of its Drawings.



Width 78.00 ^{FT}

Depth 39.66 ^{FT}

Height 34.58 ^{FT}

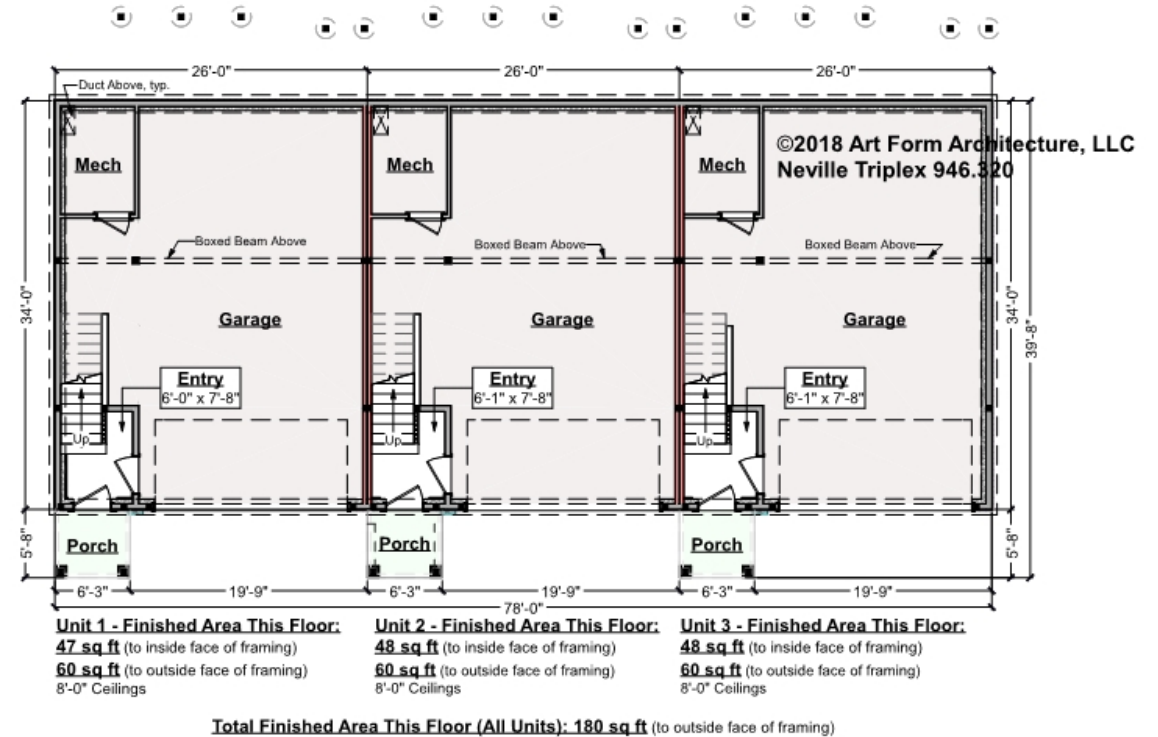
LIVING AREA		BEDROOMS		BATHROOMS	
Main	5476 ^{FT}	Main	9	Main	7.5
Future	0 ^{FT}	Future	0	Future	0
2 nd Unit	0 ^{FT}	2 nd Unit	0	2 nd Unit	0



NEVILLE TRIPLEX - 1ST FLOOR

946.320

Some features shown are optional. Your Purchase & Sale Agreement governs, whether items are labeled "optional" in this document or not.



CLG HT SHOWN 8'-0"

CLG HT POSSIBLE 9'-0"

* Major Change Fee, see website plan page for cost

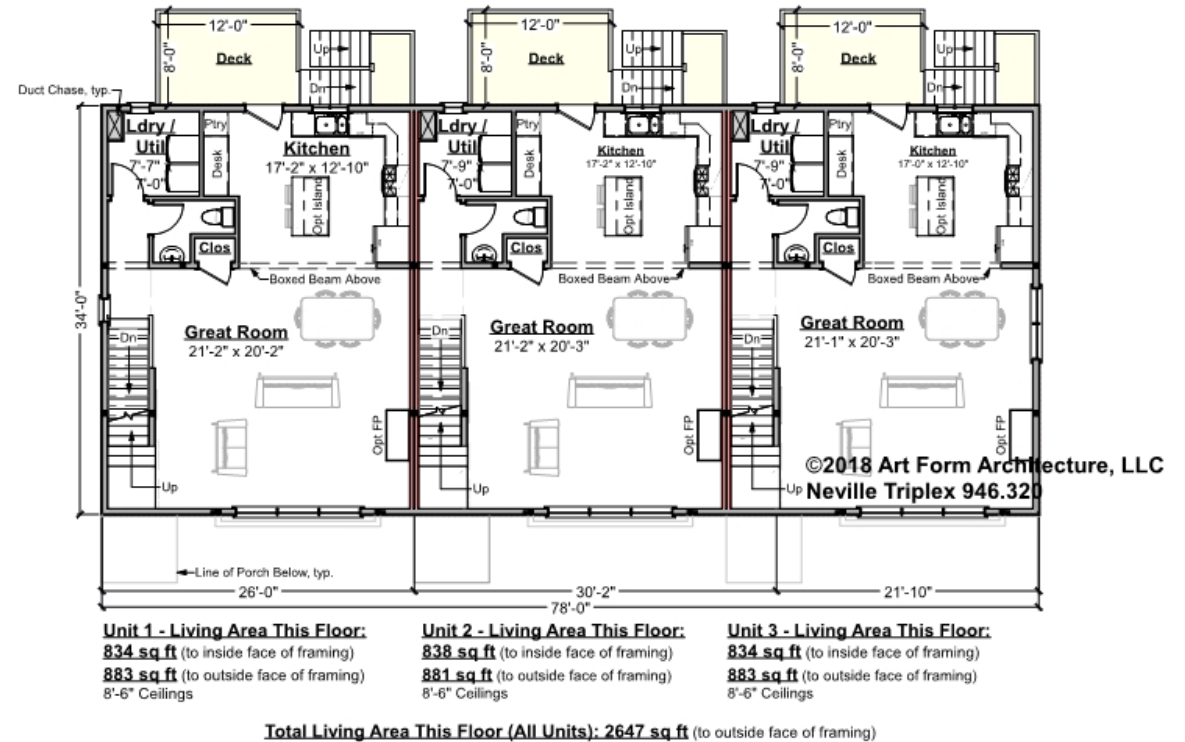
F1 LIVING AREA	180 ^{FT}	F1 BEDROOMS	0	F1 BATHROOMS	0
Main	180.00 ^{FT}	Main		Main	
Future	FT	Future		Future	
2 nd Unit	FT	2 nd Unit		2 nd Unit	



NEVILLE TRIPLEX - 2ND FLOOR

946.320

Some features shown are optional. Your Purchase & Sale Agreement governs, whether items are labeled "optional" in this document or not.



CLG HT SHOWN 8'-1" - 8'-11"

CLG HT POSSIBLE 8'-0"

* Major Change Fee, see website plan page for cost

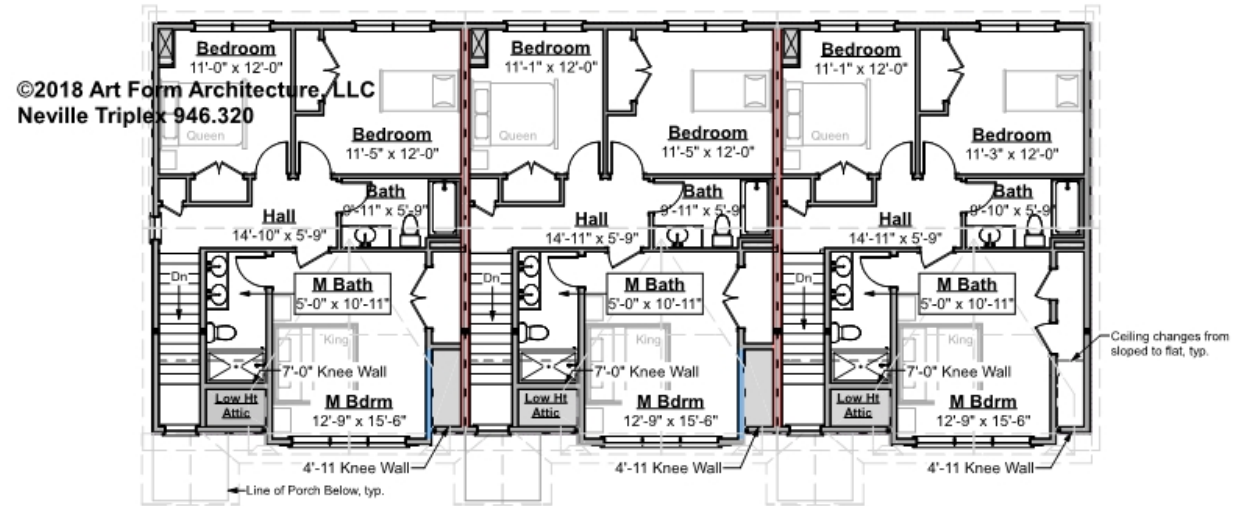
F1 LIVING AREA	2647 FT	F1 BEDROOMS	0	F1 BATHROOMS	1.5
Main	2647.00 FT	Main	0.00	Main	1.50
Future	FT	Future		Future	
2 nd Unit	FT	2 nd Unit		2 nd Unit	



NEVILLE TRIPLEX - 3RD FLOOR

946.320

Some features shown are optional. Your Purchase & Sale Agreement governs, whether items are labeled "optional" in this document or not.



Unit 1 - Living Area This Floor:
827 sq ft (to inside face of framing)
877 sq ft (to outside face of framing)
 8'-0" Ceilings

Unit 2 - Living Area This Floor:
831 sq ft (to inside face of framing)
876 sq ft (to outside face of framing)
 8'-0" Ceilings

Unit 3 - Living Area This Floor:
847 sq ft (to inside face of framing)
896 sq ft (to outside face of framing)
 8'-0" Ceilings

Total Living Area This Floor (All Units): 2649 sq ft (to outside face of framing)

CLG HT SHOWN 8'-0"

CLG HT POSSIBLE 9'-0"

** Major Change Fee, see website plan page for cost*

F1 LIVING AREA	2649 FT	F1 BEDROOMS	9	F1 BATHROOMS	6
Main	2649.00 FT	Main	9.00	Main	6.00
Future	FT	Future		Future	
2 nd Unit	FT	2 nd Unit		2 nd Unit	



Art Form Architecture, LLC

NEVILLE TRIPLEX - FRONT ELEVATION

946.320

Some features shown are optional. Your Purchase & Sale Agreement governs, whether items are labeled "optional" in this document or not.





Art Form Architecture, LLC

NEVILLE TRIPLEX - RIGHT ELEVATION 946.320

Some features shown are optional. Your Purchase & Sale Agreement governs, whether items are labeled "optional" in this document or not.



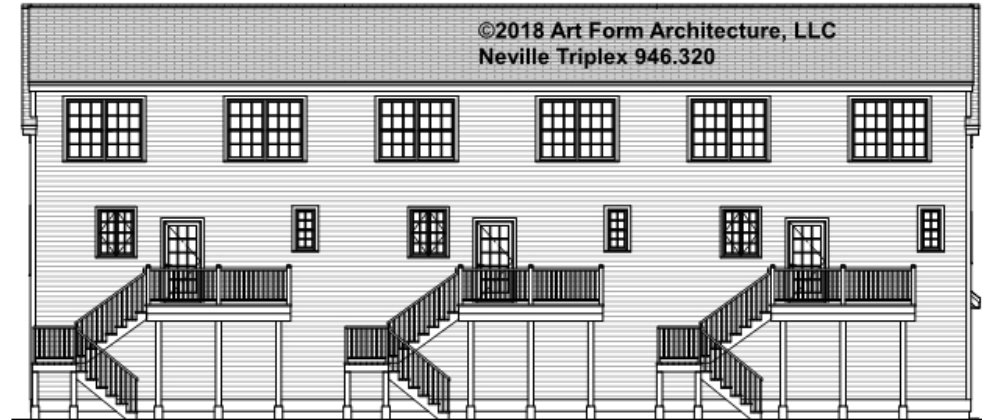


Art Form Architecture, LLC

NEVILLE TRIPLEX - REAR ELEVATION

946.320

Some features shown are optional. Your Purchase & Sale Agreement governs, whether items are labeled "optional" in this document or not.





Art Form Architecture, LLC

NEVILLE TRIPLEX - LEFT ELEVATION

946.320

Some features shown are optional. Your Purchase & Sale Agreement governs, whether items are labeled "optional" in this document or not.





Art Form Architecture, LLC

NEVILLE TRIPLEX - REAR RENDER

946.320

Some features shown are optional. Your Purchase & Sale Agreement governs, whether items are labeled "optional" in this document or not.

