



Art Form Architecture, LLC

MERA PEAKS

781.500

In addition to our Terms and Conditions (the "Terms"), please be aware of the following:

Art Form Architecture, LLC ("Artform") requires that our Drawings be built substantially as designed. Artform will not be obligated by or liable for use of this design with markups as part of any builder agreement. While we attempt to accommodate where possible and reasonable, and where the changes do not denigrate our design, any and all changes to Drawings must be approved in writing by Artform. It is recommended that you have your Drawing updated by Artform prior to attaching any Drawing to any builder agreement. Artform shall not be responsible for the misuse of or unauthorized alterations to any of its Drawings.



Width 85.50 ^{FT}

Depth 70.00 ^{FT}

Height 30.00 ^{FT}

LIVING AREA		4050 ^{FT}	BEDROOMS		6	BATHROOMS		4.5
Main		3194 ^{FT}	Main		4	Main		3.5
Future		856 ^{FT}	Future		2	Future		1
2 nd Unit		0 ^{FT}	2 nd Unit		0	2 nd Unit		0

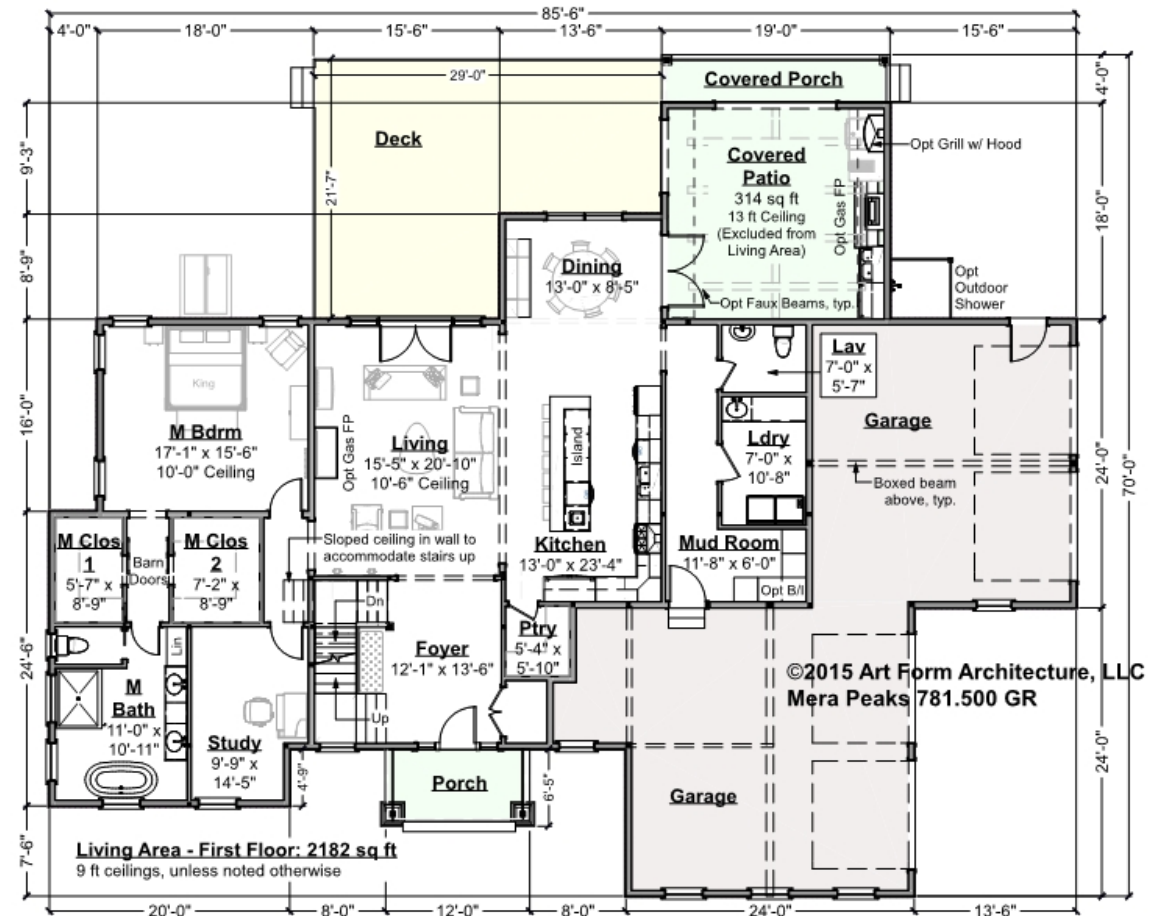


Art Form Architecture, LLC

MERA PEAKS - 1ST FLOOR

781.500

Some features shown are optional. Your Purchase & Sale Agreement governs, whether items are labeled "optional" in this document or not.



CLG HT SHOWN 9'-0"

CLG HT POSSIBLE 8'-0"

* Major Change Fee, see website plan page for cost

F1 LIVING AREA 2182 ^{FT}

Main 2182.00 ^{FT}

Future 0.00 ^{FT}

2nd Unit 0.00 ^{FT}

F1 BEDROOMS 2

Main 1.00

Future 1.00

2nd Unit 0.00

F1 BATHROOMS 1.5

Main 1.50

Future 0.00

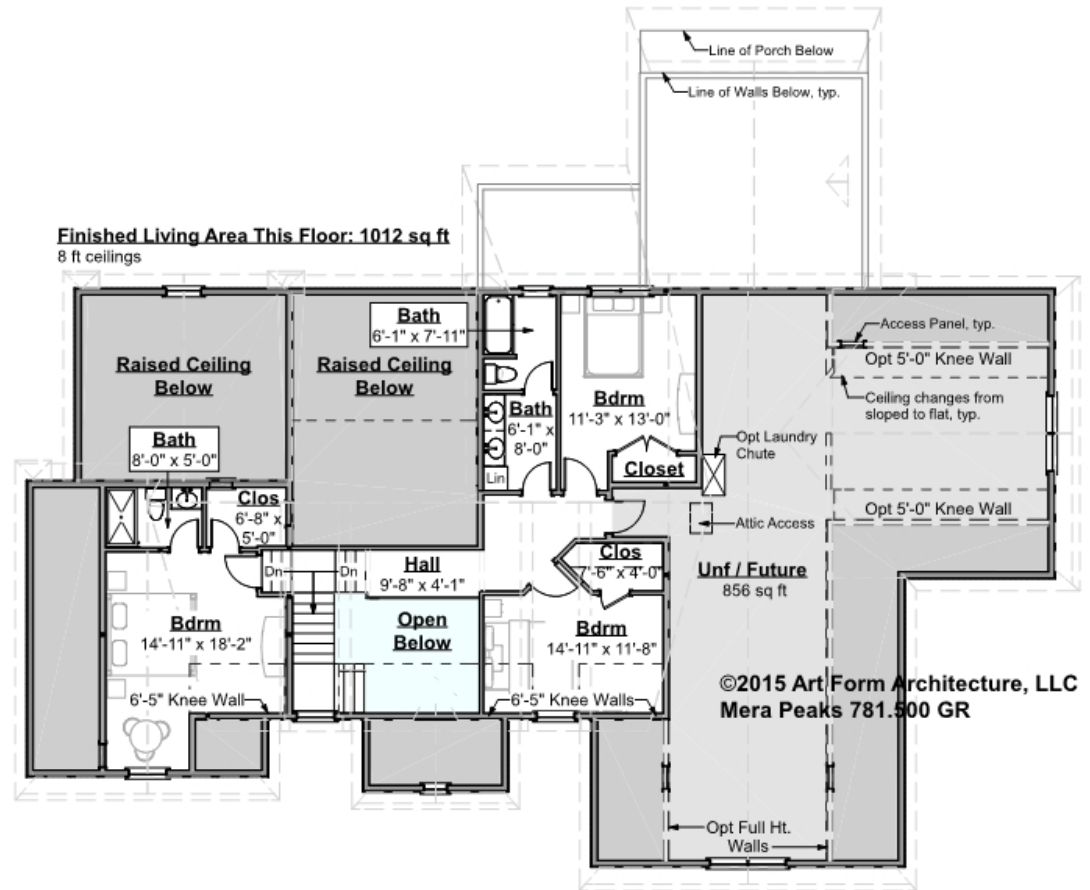
2nd Unit 0.00



NERA PEAKS - 2ND FLOOR

781.500

Some features shown are optional. Your Purchase & Sale Agreement governs, whether items are labeled "optional" in this document or not.



CLG HT SHOWN 8'-0"

CLG HT POSSIBLE 8'-0"

* Major Change Fee, see website plan page for cost

F1 LIVING AREA		1868 ^{FT}	F1 BEDROOMS		4	F1 BATHROOMS		3
Main		1012.00 ^{FT}	Main		3.00	Main		2.00
Future		856.00 ^{FT}	Future		1.00	Future		1.00
2 nd Unit		0.00 ^{FT}	2 nd Unit		0.00	2 nd Unit		0.00

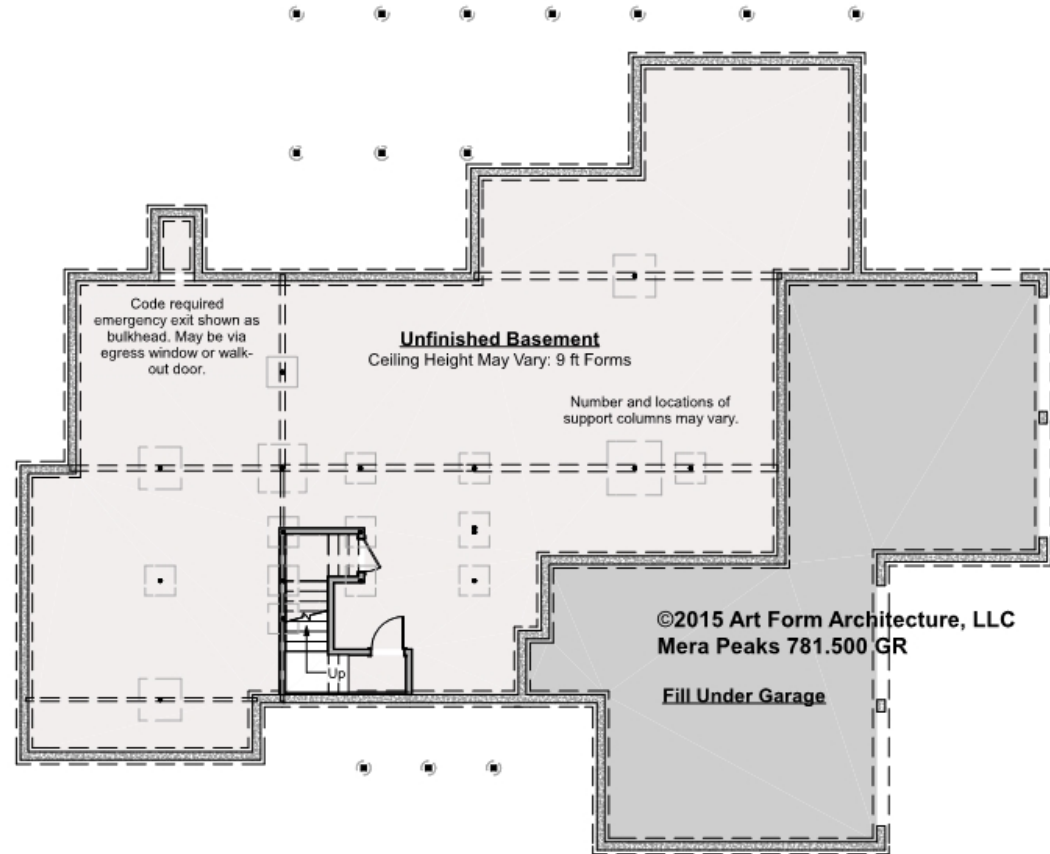


MERA PEAKS - BASEMENT

781.500

Note - not shown here, this basement is over 2000 sf. Under the new code it requires a second means of egress (which can be an egress window/window well).

Some features shown are optional. Your Purchase & Sale Agreement governs, whether items are labeled "optional" in this document or not.



CLG HT SHOWN 9'-0"

CLG HT POSSIBLE 7'-8"

* Major Change Fee, see website plan page for cost

F1 LIVING AREA		0 ^{FT}	F1 BEDROOMS		0	F1 BATHROOMS		0
Main	0.00	^{FT}	Main	0.00		Main	0.00	
Future	0.00	^{FT}	Future	0.00		Future	0.00	
2 nd Unit	0.00	^{FT}	2 nd Unit	0.00		2 nd Unit	0.00	

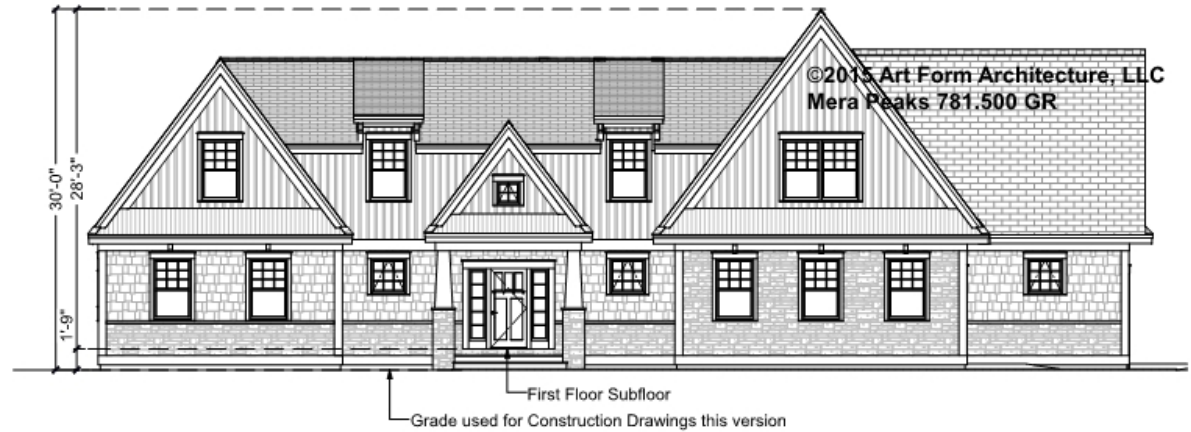


Art Form Architecture, LLC

NERA PEAKS - FRONT ELEVATION

781.500

Some features shown are optional. Your Purchase & Sale Agreement governs, whether items are labeled "optional" in this document or not.





Art Form Architecture, LLC

NERA PEAKS - RIGHT ELEVATION

781.500

Some features shown are optional. Your Purchase & Sale Agreement governs, whether items are labeled "optional" in this document or not.



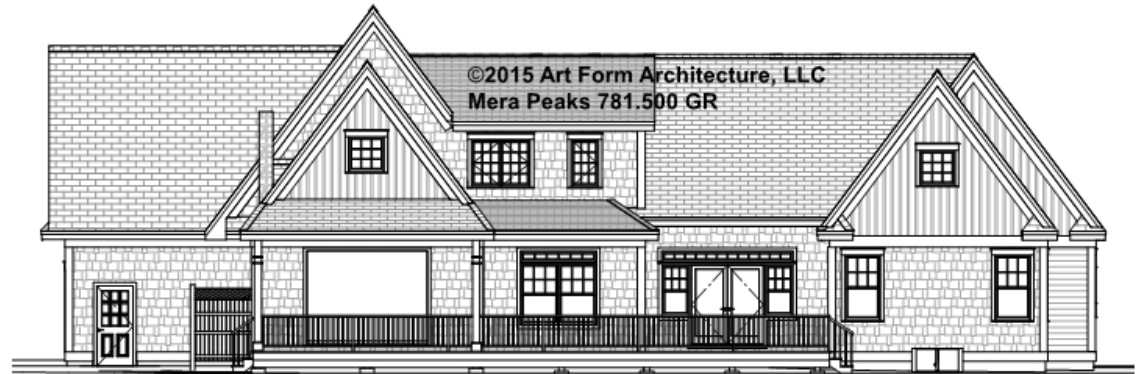


Art Form Architecture, LLC

NERA PEAKS - REAR ELEVATION

781.500

Some features shown are optional. Your Purchase & Sale Agreement governs, whether items are labeled "optional" in this document or not.





Art Form Architecture, LLC

NERA PEAKS - LEFT ELEVATION

781.500

Some features shown are optional. Your Purchase & Sale Agreement governs, whether items are labeled "optional" in this document or not.





Art Form Architecture, LLC

NERA PEAKS - REAR RENDER

781.500

Some features shown are optional. Your Purchase & Sale Agreement governs, whether items are labeled "optional" in this document or not.

