



Art Form Architecture, LLC

## MARKEY MAX PRIME

477.120 GR

In addition to our Terms and Conditions (the "Terms"), please be aware of the following:

Art Form Architecture, LLC ("Artform") requires that our Drawings be built substantially as designed. Artform will not be obligated by or liable for use of this design with markups as part of any builder agreement. While we attempt to accommodate where possible and reasonable, and where the changes do not denigrate our design, any and all changes to Drawings must be approved in writing by Artform. It is recommended that you have your Drawing updated by Artform prior to attaching any Drawing to any builder agreement. Artform shall not be responsible for the misuse of or unauthorized alterations to any of its Drawings.



©2012 Art Form Architecture, LLC  
Markey Max 477.120 GR

Width 28.00 <sup>FT</sup>

Depth 36.00 <sup>FT</sup>

Height 32.33 <sup>FT</sup>

LIVING AREA		BEDROOMS		BATHROOMS	
	1855 <sup>FT</sup>		3		1.5
Main	1855 <sup>FT</sup>	Main	3	Main	1.5
Future	0 <sup>FT</sup>	Future	0	Future	0
2 <sup>nd</sup> Unit	0 <sup>FT</sup>	2 <sup>nd</sup> Unit	0	2 <sup>nd</sup> Unit	0



Some features shown are optional. Your Purchase & Sale Agreement governs, whether items are labeled "optional" in this document or not.



\* Major Change Fee, see website plan page for cost

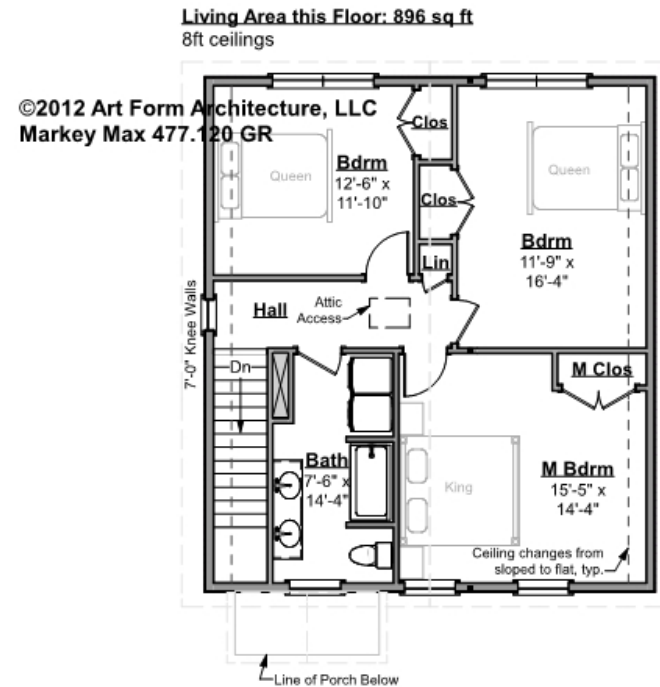
<b>F1 LIVING AREA</b>		896 <sup>FT</sup>	<b>F1 BEDROOMS</b>		0	<b>F1 BATHROOMS</b>		0.5
Main		896.00 <sup>FT</sup>	Main			Main		0.50
Future		FT	Future			Future		
2 <sup>nd</sup> Unit		FT	2 <sup>nd</sup> Unit			2 <sup>nd</sup> Unit		



## MARKEY MAX PRIME - 2<sup>ND</sup> FLOOR

### 477.120 GR

Some features shown are optional. Your Purchase & Sale Agreement governs, whether items are labeled "optional" in this document or not.



CLG HT SHOWN 8'-0"

CLG HT POSSIBLE 8'-0"

\* Major Change Fee, see website plan page for cost

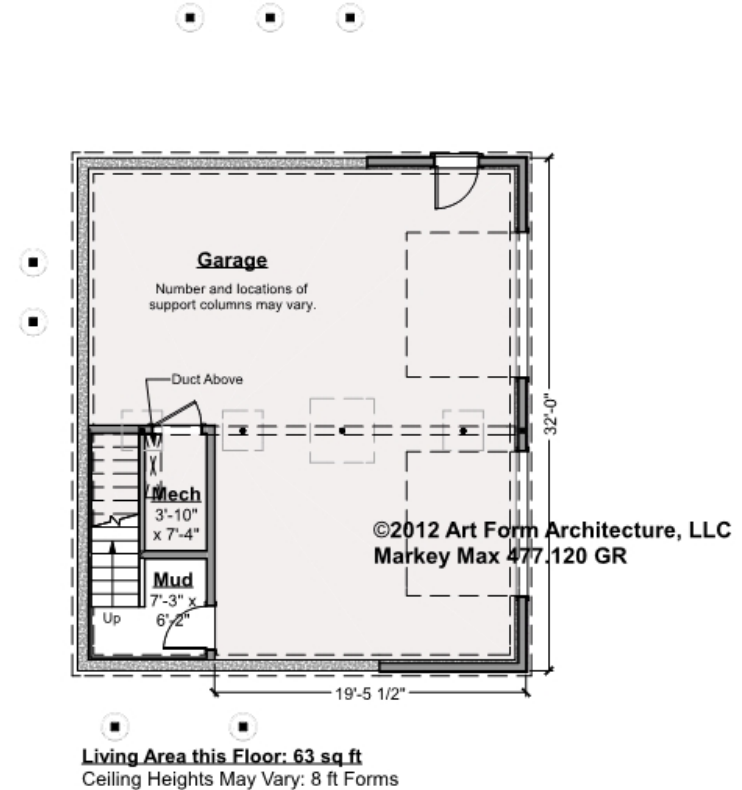
F1 LIVING AREA		896 <sup>FT</sup>	F1 BEDROOMS		3	F1 BATHROOMS		1
Main		896.00 <sup>FT</sup>	Main		3.00	Main		1.00
Future		FT	Future			Future		
2 <sup>nd</sup> Unit		FT	2 <sup>nd</sup> Unit			2 <sup>nd</sup> Unit		



## MARKEY MAX PRIME - BASEMENT

### 477.120 GR

Some features shown are optional. Your Purchase & Sale Agreement governs, whether items are labeled "optional" in this document or not.



CLG HT SHOWN 7'-8"      CLG HT POSSIBLE 8'-0"

\* Major Change Fee, see website plan page for cost

F1 LIVING AREA		63 FT	F1 BEDROOMS		0	F1 BATHROOMS		0
Main		63.00 FT	Main			Main		
Future		FT	Future			Future		
2 <sup>nd</sup> Unit		FT	2 <sup>nd</sup> Unit			2 <sup>nd</sup> Unit		

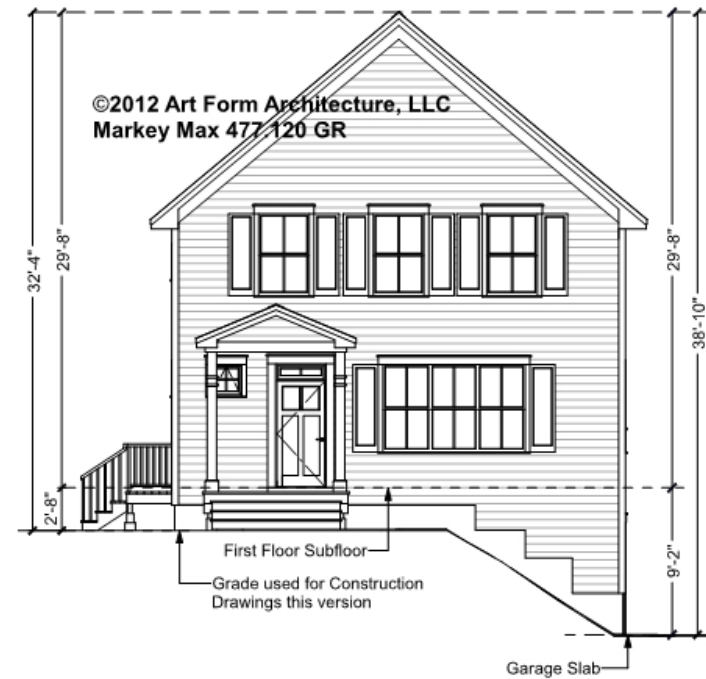


Art Form Architecture, LLC

## MARKEY MAX PRIME - FRONT ELEVATION

### 477.120 GR

Some features shown are optional. Your Purchase & Sale Agreement governs, whether items are labeled "optional" in this document or not.





Art Form Architecture, LLC

## MARKEY MAX PRIME - RIGHT ELEVATION

477.120 GR

—  
Some features shown are optional. Your Purchase & Sale Agreement governs, whether items are labeled "optional" in this document or not.



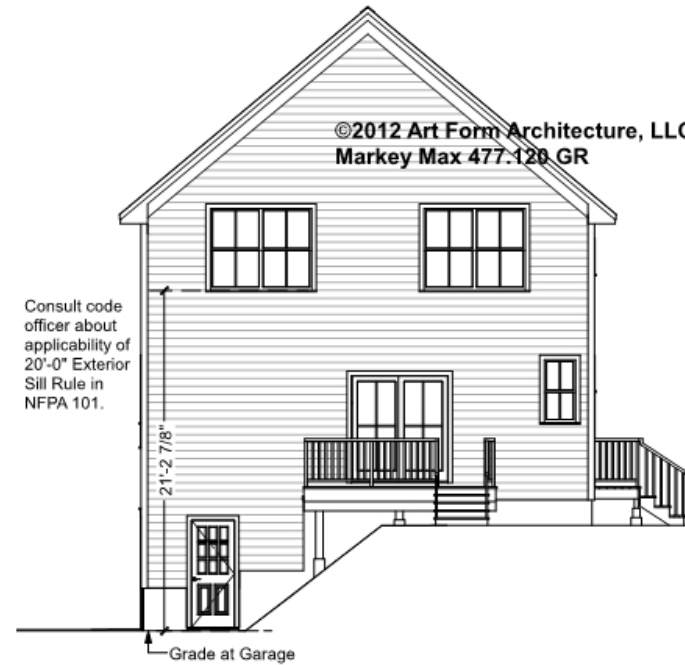


Art Form Architecture, LLC

## MARKEY MAX PRIME - REAR ELEVATION

477.120 GR

Some features shown are optional. Your Purchase & Sale Agreement governs, whether items are labeled "optional" in this document or not.





Art Form Architecture, LLC

## MARKEY MAX PRIME - LEFT ELEVATION

477.120 GR

—

Some features shown are optional. Your Purchase & Sale Agreement governs, whether items are labeled "optional" in this document or not.







Art Form Architecture, LLC

## MARKEY MAX PRIME - REAR RENDER

477.120 GR

Some features shown are optional. Your Purchase & Sale Agreement governs, whether items are labeled "optional" in this document or not.

