



Art Form Architecture, LLC

KATEN

868.124 KL

In addition to our Terms and Conditions (the "Terms"), please be aware of the following:

Art Form Architecture, LLC ("Artform") requires that our Drawings be built substantially as designed. Artform will not be obligated by or liable for use of this design with markups as part of any builder agreement. While we attempt to accommodate where possible and reasonable, and where the changes do not denigrate our design, any and all changes to Drawings must be approved in writing by Artform. It is recommended that you have your Drawing updated by Artform prior to attaching any Drawing to any builder agreement. Artform shall not be responsible for the misuse of or unauthorized alterations to any of its Drawings.



Width 78.00 ^{FT}

Depth 59.00 ^{FT}

Height 31.16 ^{FT}

LIVING AREA		BEDROOMS		BATHROOMS	
	3258 ^{FT}		4		2.5
Main	2639 ^{FT}	Main	3	Main	2.5
Future	619 ^{FT}	Future	1	Future	0
2 nd Unit	0 ^{FT}	2 nd Unit	0	2 nd Unit	0

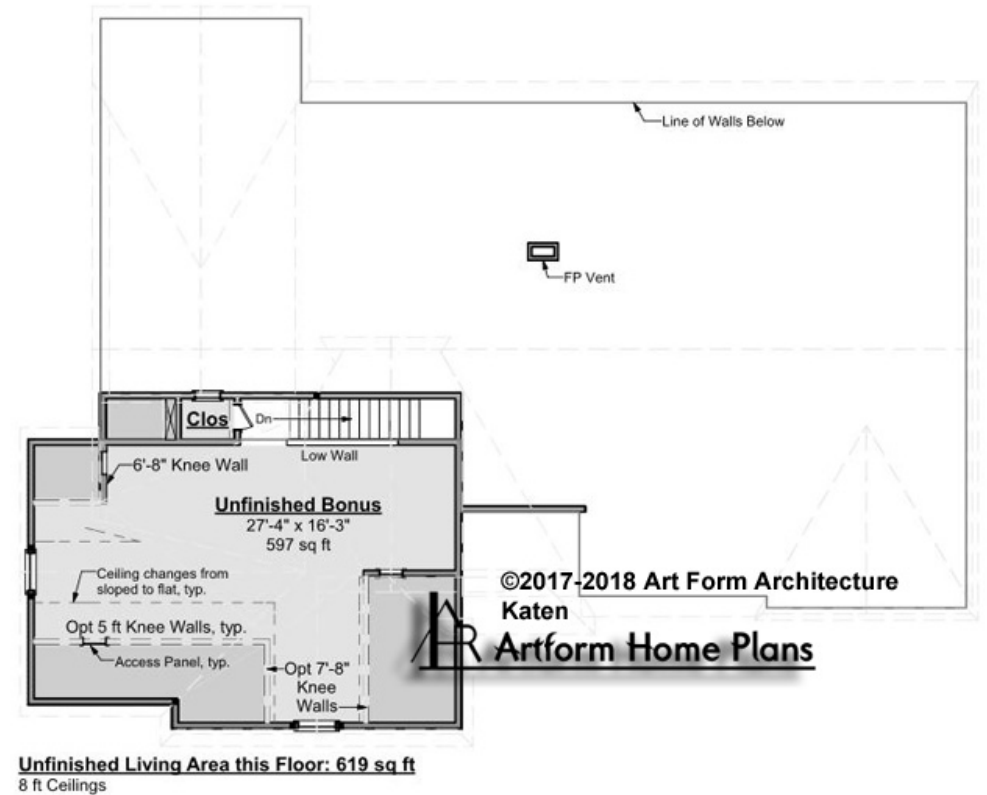




KATEN - 2ND FLOOR

868.124 KL

Some features shown are optional. Your Purchase & Sale Agreement governs, whether items are labeled "optional" in this document or not.



CLG HT SHOWN 8'-0"

CLG HT POSSIBLE 8'-0"

* Major Change Fee, see website plan page for cost

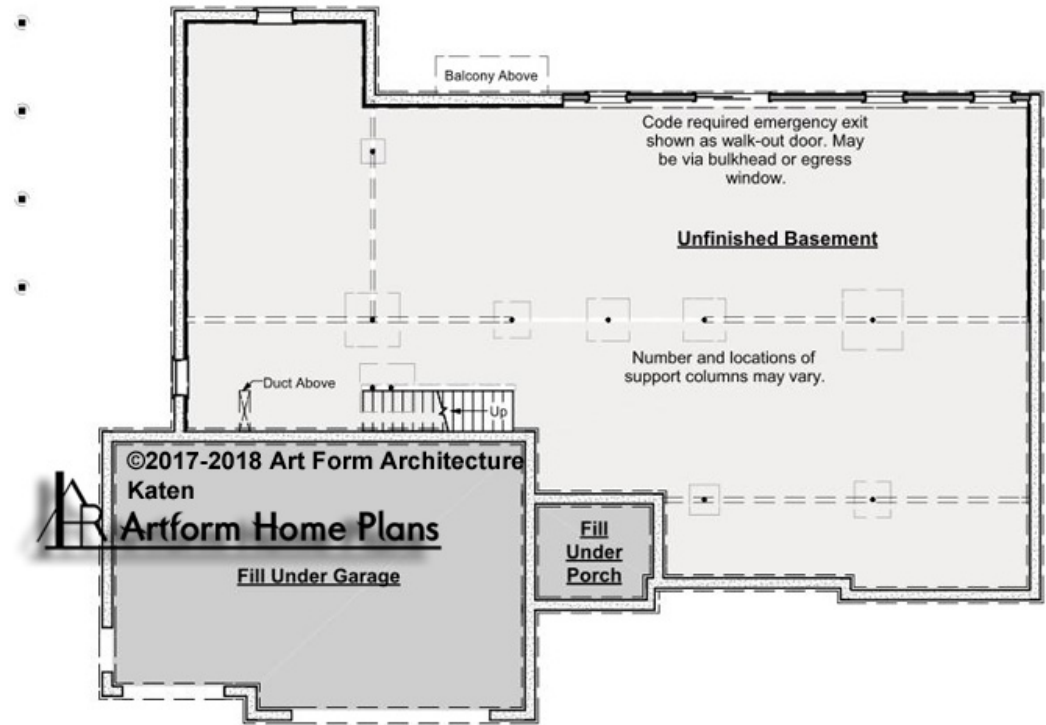
F1 LIVING AREA		619 ^{FT}	F1 BEDROOMS		1	F1 BATHROOMS		0
Main		0.00 ^{FT}	Main		0.00	Main		0.00
Future		619.00 ^{FT}	Future		1.00	Future		0.00
2 nd Unit		0.00 ^{FT}	2 nd Unit		0.00	2 nd Unit		0.00



KATEN - BASEMENT

868.124 KL

Some features shown are optional. Your Purchase & Sale Agreement governs, whether items are labeled "optional" in this document or not.



CLG HT SHOWN 7'-8"

CLG HT POSSIBLE 9'-0"

* Major Change Fee, see website plan page for cost

F1 LIVING AREA		0 FT	F1 BEDROOMS		0	F1 BATHROOMS		0
Main		0.00 FT	Main		0.00	Main		0.00
Future		0.00 FT	Future		0.00	Future		0.00
2 nd Unit		0.00 FT	2 nd Unit		0.00	2 nd Unit		0.00

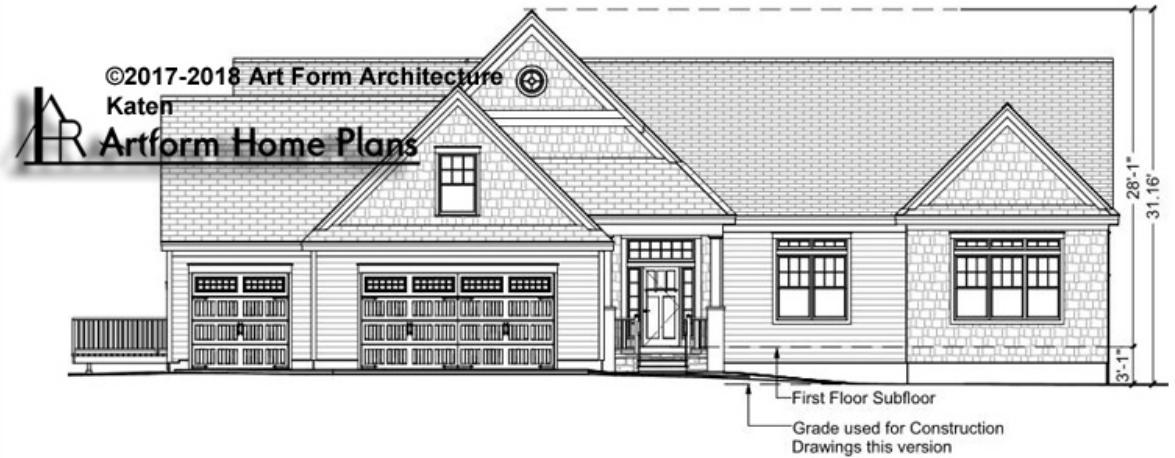


Art Form Architecture, LLC

KATEN - FRONT ELEVATION

868.124 KL

Some features shown are optional. Your Purchase & Sale Agreement governs, whether items are labeled "optional" in this document or not.



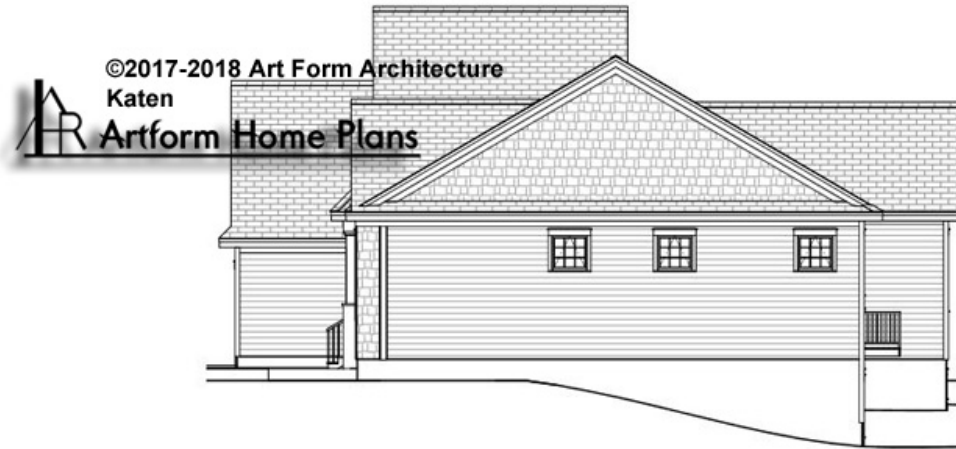


Art Form Architecture, LLC

KATEN - RIGHT ELEVATION

868.124 KL

Some features shown are optional. Your Purchase & Sale Agreement governs, whether items are labeled "optional" in this document or not.





Art Form Architecture, LLC

KATEN - REAR ELEVATION

868.124 KL

Some features shown are optional. Your Purchase & Sale Agreement governs, whether items are labeled "optional" in this document or not.





Art Form Architecture, LLC

KATEN - LEFT ELEVATION

868.124 KL

Some features shown are optional. Your Purchase & Sale Agreement governs, whether items are labeled "optional" in this document or not.

