



Art Form Architecture, LLC

KAI

1128.124.v2 GL

In addition to our Terms and Conditions (the "Terms"), please be aware of the following:

Art Form Architecture, LLC ("Artform") requires that our Drawings be built substantially as designed. Artform will not be obligated by or liable for use of this design with markups as part of any builder agreement. While we attempt to accommodate where possible and reasonable, and where the changes do not denigrate our design, any and all changes to Drawings must be approved in writing by Artform. It is recommended that you have your Drawing updated by Artform prior to attaching any Drawing to any builder agreement. Artform shall not be responsible for the misuse of or unauthorized alterations to any of its Drawings.



Width 54.00 FT

Depth 79.00 FT

Height 29.75 FT

LIVING AREA	4006 FT
Main	4006 FT
Future	0 FT
2 nd Unit	0 FT

BEDROOMS	7
Main	4
Future	3
2 nd Unit	0

BATHROOMS	3.5
Main	3.5
Future	0
2 nd Unit	0



1128.124.v2 GL

NOTE: Right side of plan is Front of House

Some features shown are optional. Your Purchase & Sale Agreement governs, whether items are labeled "optional" in this document or not.



* Major Change Fee, see website plan page for cost

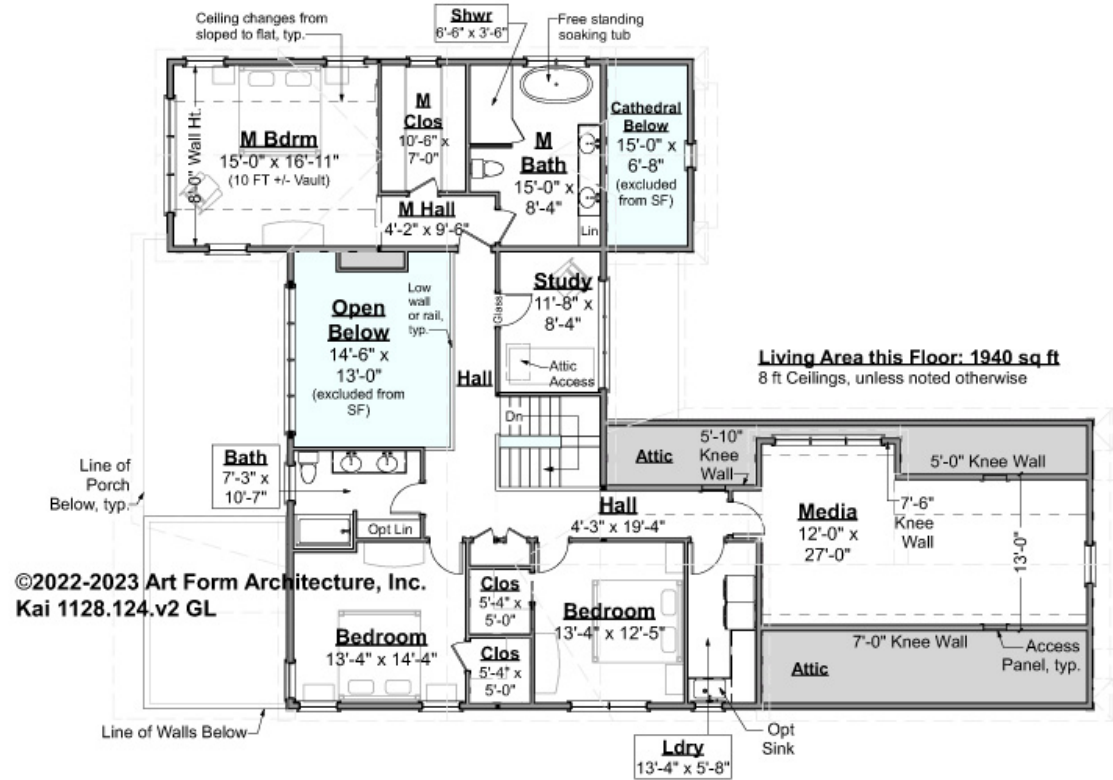
F1 LIVING AREA		2066 ^{FT}	F1 BEDROOMS		2	F1 BATHROOMS		1.5
Main		2066.00 ^{FT}	Main		1.00	Main		1.50
Future		FT	Future		1.00	Future		
2 nd Unit		FT	2 nd Unit			2 nd Unit		



KAI - 2ND FLOOR

1128.124.v2 GL

Some features shown are optional. Your Purchase & Sale Agreement governs, whether items are labeled "optional" in this document or not.



CLG HT SHOWN 8'-0"

CLG HT POSSIBLE 9'-0"

* Major Change Fee, see website plan page for cost

F1 LIVING AREA	1940 ^{FT}	F1 BEDROOMS	5	F1 BATHROOMS	2
Main	1940.00 ^{FT}	Main	3.00	Main	2.00
Future	FT	Future	2.00	Future	
2 nd Unit	FT	2 nd Unit		2 nd Unit	

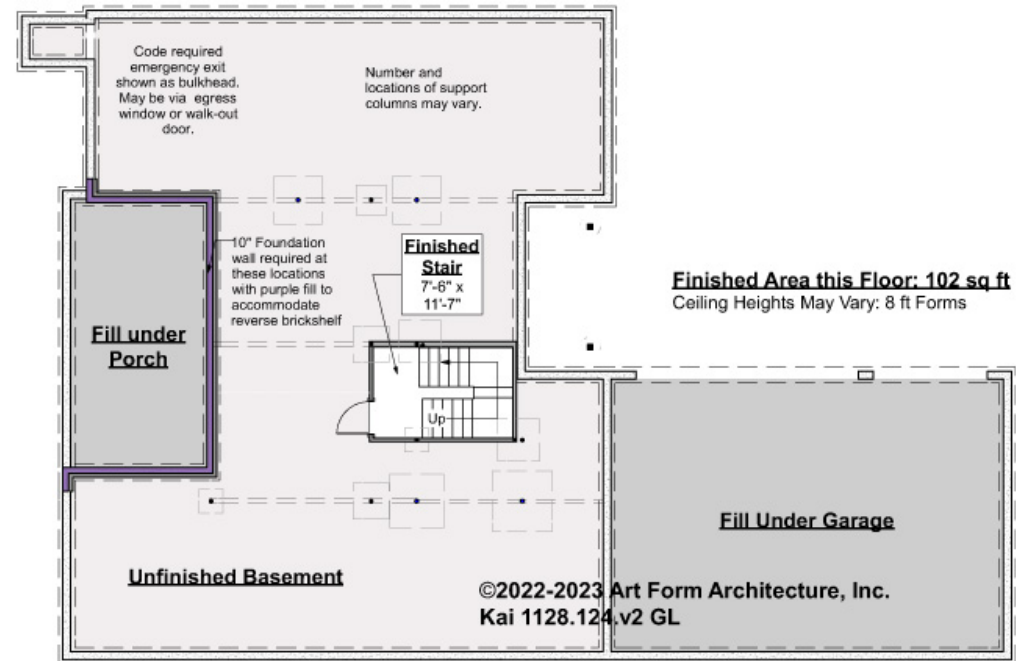


KAI - BASEMENT

1128.124.v2 GL

Note: finished basement area is NOT included in main or future Living Area, but IS shown on CDs. We do this so Search doesn't mislead.

Some features shown are optional. Your Purchase & Sale Agreement governs, whether items are labeled "optional" in this document or not.



CLG HT SHOWN 7'-8"

CLG HT POSSIBLE 9'-0"

* Major Change Fee, see website plan page for cost

F1 LIVING AREA		0 FT	F1 BEDROOMS		0	F1 BATHROOMS		0
Main		FT	Main			Main		
Future		FT	Future			Future		
2 nd Unit		FT	2 nd Unit			2 nd Unit		



Art Form Architecture, LLC

KAI - FRONT ELEVATION

1128.124.v2 GL

Some features shown are optional. Your Purchase & Sale Agreement governs, whether items are labeled "optional" in this document or not.





Art Form Architecture, LLC

KAI - RIGHT ELEVATION

1128.124.v2 GL

Some features shown are optional. Your Purchase & Sale Agreement governs, whether items are labeled "optional" in this document or not.





Art Form Architecture, LLC

KAI - REAR ELEVATION

1128.124.v2 GL

Some features shown are optional. Your Purchase & Sale Agreement governs, whether items are labeled "optional" in this document or not.





Art Form Architecture, LLC

KAI - LEFT ELEVATION

1128.124.v2 GL

Some features shown are optional. Your Purchase & Sale Agreement governs, whether items are labeled "optional" in this document or not.





Art Form Architecture, LLC

KAI - REAR RENDER

1128.124.v2 GL

Some features shown are optional. Your Purchase & Sale Agreement governs, whether items are labeled "optional" in this document or not.

