



Art Form Architecture, LLC

## HOPSCOTCH CLASSIC

408.124.v51 GL

In addition to our Terms and Conditions (the "Terms"), please be aware of the following:

Art Form Architecture, LLC ("Artform") requires that our Drawings be built substantially as designed. Artform will not be obligated by or liable for use of this design with markups as part of any builder agreement. While we attempt to accommodate where possible and reasonable, and where the changes do not denigrate our design, any and all changes to Drawings must be approved in writing by Artform. It is recommended that you have your Drawing updated by Artform prior to attaching any Drawing to any builder agreement. Artform shall not be responsible for the misuse of or unauthorized alterations to any of its Drawings.



Width 58.00 <sup>FT</sup>

Depth 32.00 <sup>FT</sup>

Height 25.66 <sup>FT</sup>

LIVING AREA	2300 <sup>FT</sup>
Main	2300 <sup>FT</sup>
Future	0 <sup>FT</sup>
2 <sup>nd</sup> Unit	0 <sup>FT</sup>

BEDROOMS	5
Main	4
Future	1
2 <sup>nd</sup> Unit	0

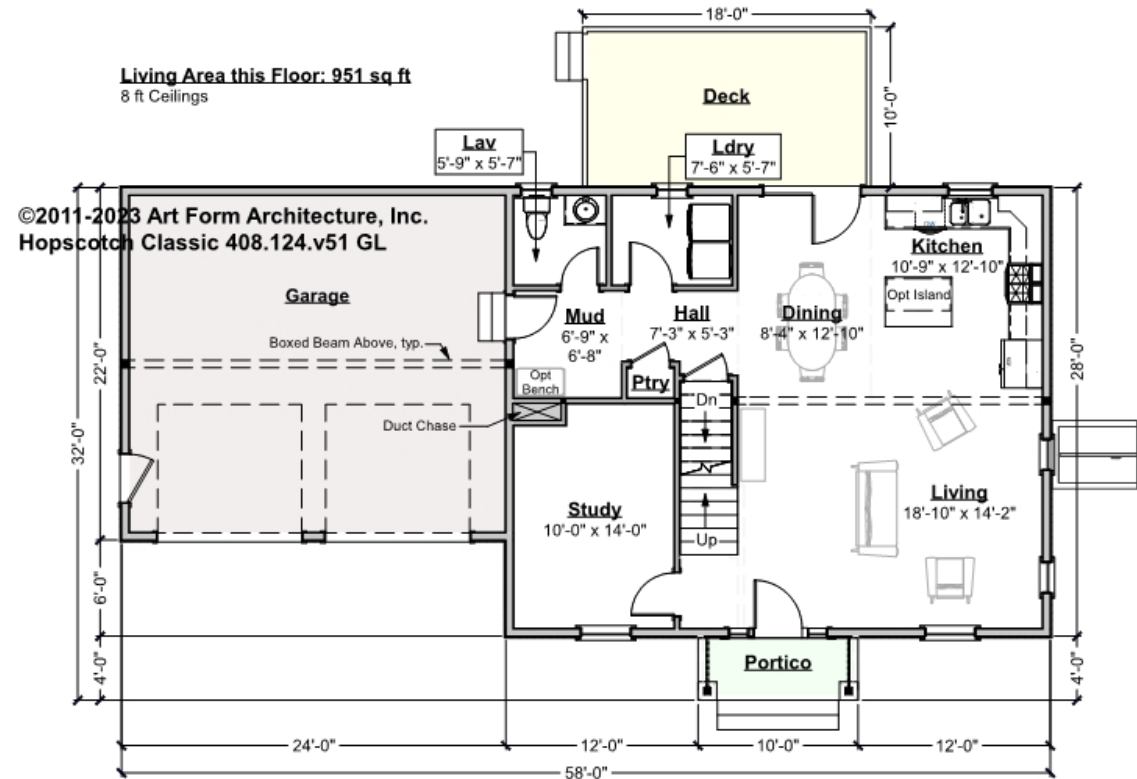
BATHROOMS	2.5
Main	2.5
Future	0
2 <sup>nd</sup> Unit	0



## HOPSCOTCH CLASSIC - 1<sup>ST</sup> FLOOR

### 408.124.v51 GL

Some features shown are optional. Your Purchase & Sale Agreement governs, whether items are labeled "optional" in this document or not.



CLG HT SHOWN 8'-0"

CLG HT POSSIBLE 8'-0"

\* Major Change Fee, see website plan page for cost

F1 LIVING AREA		951 <sup>FT</sup>	F1 BEDROOMS		1	F1 BATHROOMS		0.5
Main		951.00 <sup>FT</sup>	Main			Main		0.50
Future		FT	Future		1.00	Future		
2 <sup>nd</sup> Unit		FT	2 <sup>nd</sup> Unit			2 <sup>nd</sup> Unit		

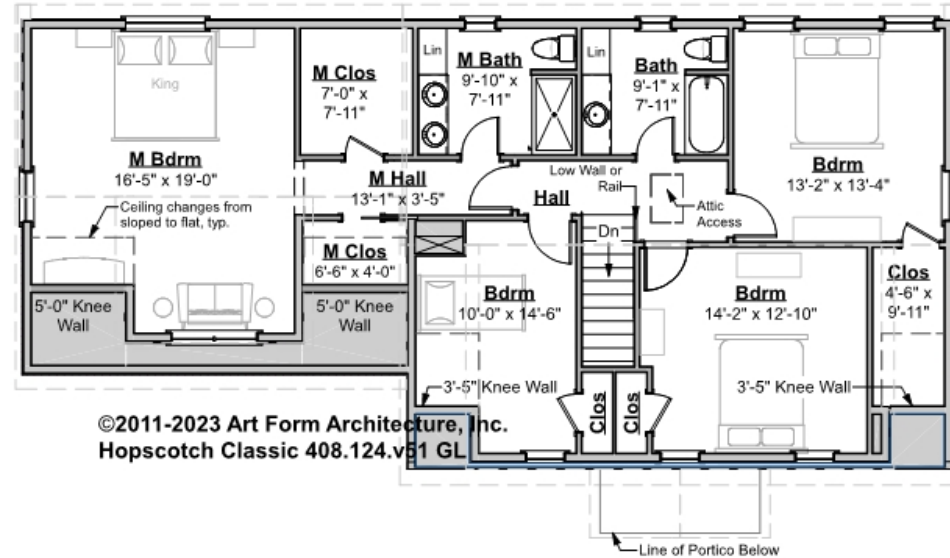


## HOPSCOTCH CLASSIC - 2<sup>ND</sup> FLOOR

### 408.124.v51 GL

Some features shown are optional. Your Purchase & Sale Agreement governs, whether items are labeled "optional" in this document or not.

**Living Area this Floor: 1349 sq ft**  
8 ft Ceilings



©2011-2023 Art Form Architecture, Inc.  
Hopscotch Classic 408.124.v51 GL

CLG HT SHOWN 8'-0"

CLG HT POSSIBLE 9'-0"

\* Major Change Fee, see website plan page for cost

F1 LIVING AREA	1349 <sup>FT</sup>	F1 BEDROOMS	4	F1 BATHROOMS	2
Main	1349.00 <sup>FT</sup>	Main	4.00	Main	2.00
Future	FT	Future		Future	
2 <sup>nd</sup> Unit	FT	2 <sup>nd</sup> Unit		2 <sup>nd</sup> Unit	

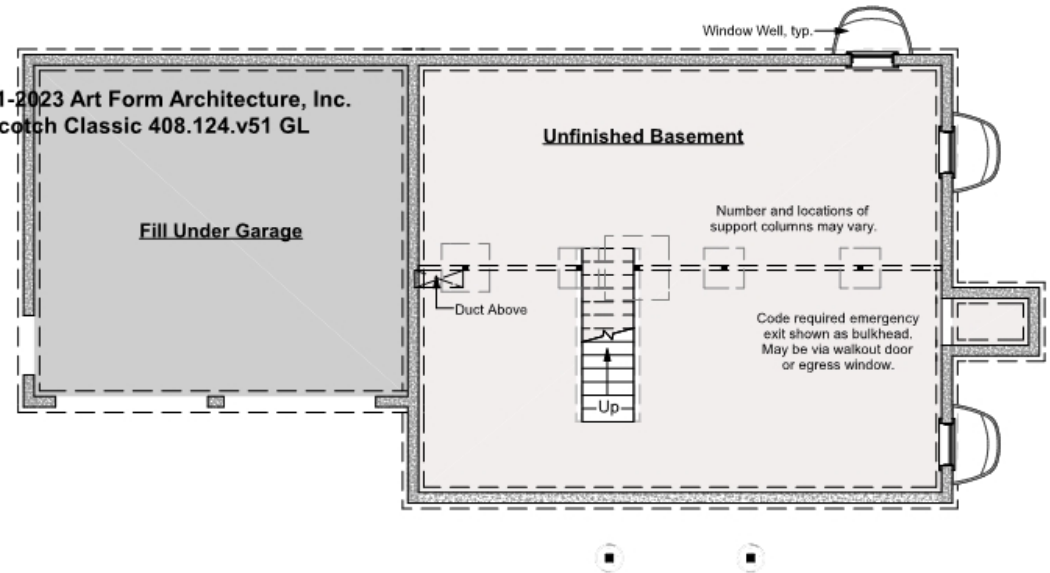


## HOPSCOTCH CLASSIC - BASEMENT

### 408.124.v51 GL

Some features shown are optional. Your Purchase & Sale Agreement governs, whether items are labeled "optional" in this document or not.

©2011-2023 Art Form Architecture, Inc.  
Hopscotch Classic 408.124.v51 GL



CLG HT SHOWN 7'-8"

CLG HT POSSIBLE 9'-0"

\* Major Change Fee, see website plan page for cost

F1 LIVING AREA 0 FT

Main FT

Future FT

2<sup>nd</sup> Unit FT

F1 BEDROOMS 0

Main

Future

2<sup>nd</sup> Unit

F1 BATHROOMS 0

Main

Future

2<sup>nd</sup> Unit



Art Form Architecture, LLC

## HOPSCOTCH CLASSIC - FRONT ELEVATION

408.124.v51 GL

Some features shown are optional. Your Purchase & Sale Agreement governs, whether items are labeled "optional" in this document or not.





Art Form Architecture, LLC

## HOPSCOTCH CLASSIC - RIGHT ELEVATION

408.124.v51 GL

—  
Some features shown are optional. Your Purchase & Sale Agreement governs, whether items are labeled "optional" in this document or not.





Art Form Architecture, LLC

## HOPSCOTCH CLASSIC - REAR ELEVATION

408.124.v51 GL

Some features shown are optional. Your Purchase & Sale Agreement governs, whether items are labeled "optional" in this document or not.







Art Form Architecture, LLC

## HOPSCOTCH CLASSIC - LEFT ELEVATION

408.124.v51 GL

—  
Some features shown are optional. Your Purchase & Sale Agreement governs, whether items are labeled "optional" in this document or not.

