



# HOPSCOTCH CLASSIC

## 408.124.v50 GL

In addition to our Terms and Conditions (the "Terms"), please be aware of the following:

Art Form Architecture, LLC ("Artform") requires that our Drawings be built substantially as designed. Artform will not be obligated by or liable for use of this design with markups as part of any builder agreement. While we attempt to accommodate where possible and reasonable, and where the changes do not denigrate our design, any and all changes to Drawings must be approved in writing by Artform. It is recommended that you have your Drawing updated by Artform prior to attaching any Drawing to any builder agreement. Artform shall not be responsible for the misuse of or unauthorized alterations to any of its Drawings.



©2011-2023 Art Form Architecture, LLC  
Hopscotch Classic 408.125.v50 GL

Width 58.00 FT

Depth 44.00 FT

Height 25.16 FT

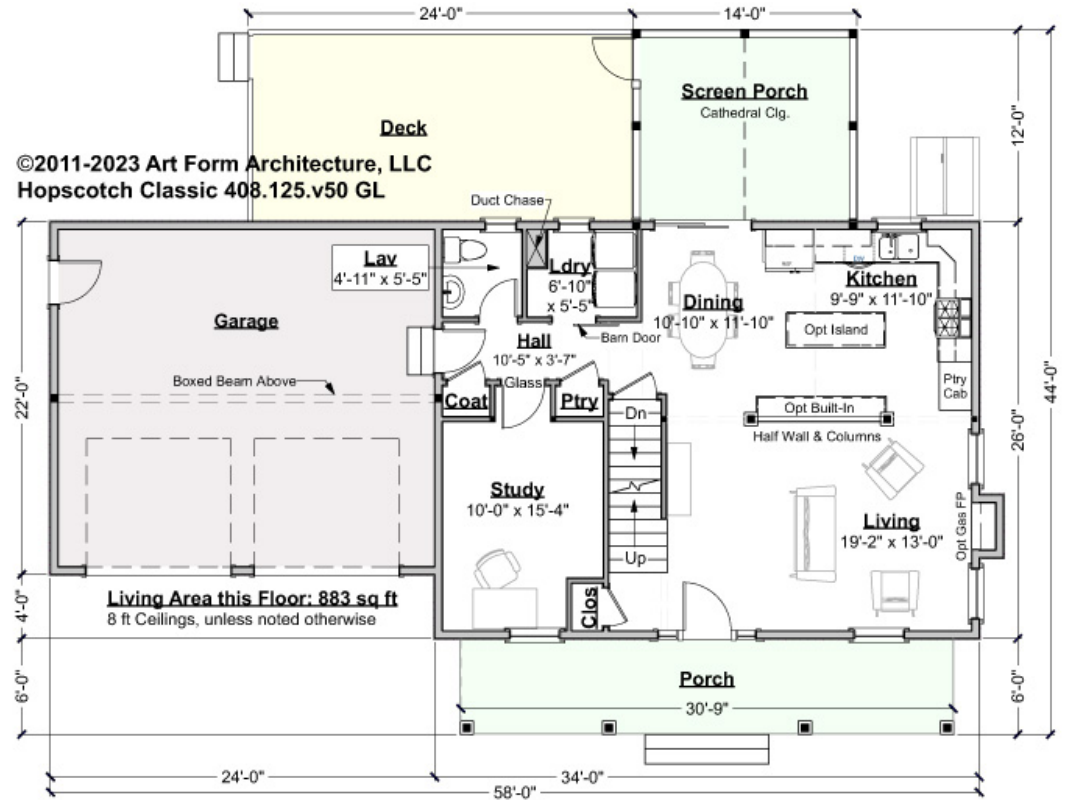
LIVING AREA		BEDROOMS		BATHROOMS	
	2009 FT		5		2.5
Main	1724 FT	Main	3	Main	2.5
Future	285 FT	Future	2	Future	0
2 <sup>nd</sup> Unit	0 FT	2 <sup>nd</sup> Unit	0	2 <sup>nd</sup> Unit	0



# HOPSCOTCH CLASSIC - 1<sup>ST</sup> FLOOR

## 408.124.v50 GL

Some features shown are optional. Your Purchase & Sale Agreement governs, whether items are labeled "optional" in this document or not.



CLG HT SHOWN 8'-0"    CLG HT POSSIBLE 8'-0"

\* Major Change Fee, see website plan page for cost

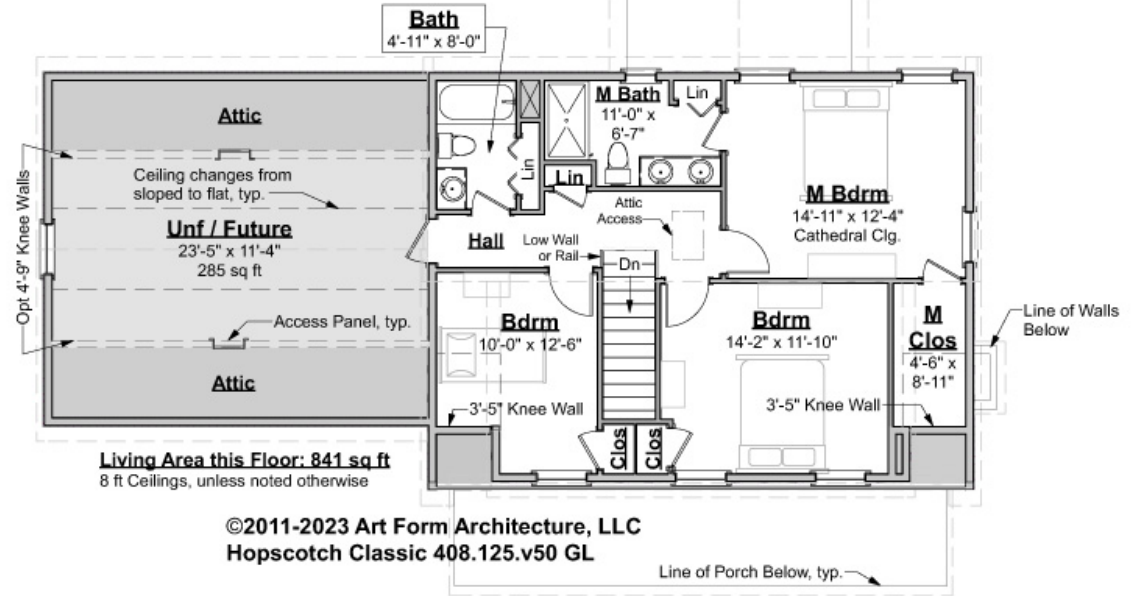
F1 LIVING AREA	883 <sup>FT</sup>	F1 BEDROOMS	1	F1 BATHROOMS	0.5
Main	883.00 <sup>FT</sup>	Main		Main	0.50
Future	FT	Future	1.00	Future	
2 <sup>nd</sup> Unit	FT	2 <sup>nd</sup> Unit		2 <sup>nd</sup> Unit	



# HOPSCOTCH CLASSIC - 2<sup>ND</sup> FLOOR

## 408.124.v50 GL

Some features shown are optional. Your Purchase & Sale Agreement governs, whether items are labeled "optional" in this document or not.



CLG HT SHOWN 8'-0"    CLG HT POSSIBLE 9'-0"

\* Major Change Fee, see website plan page for cost

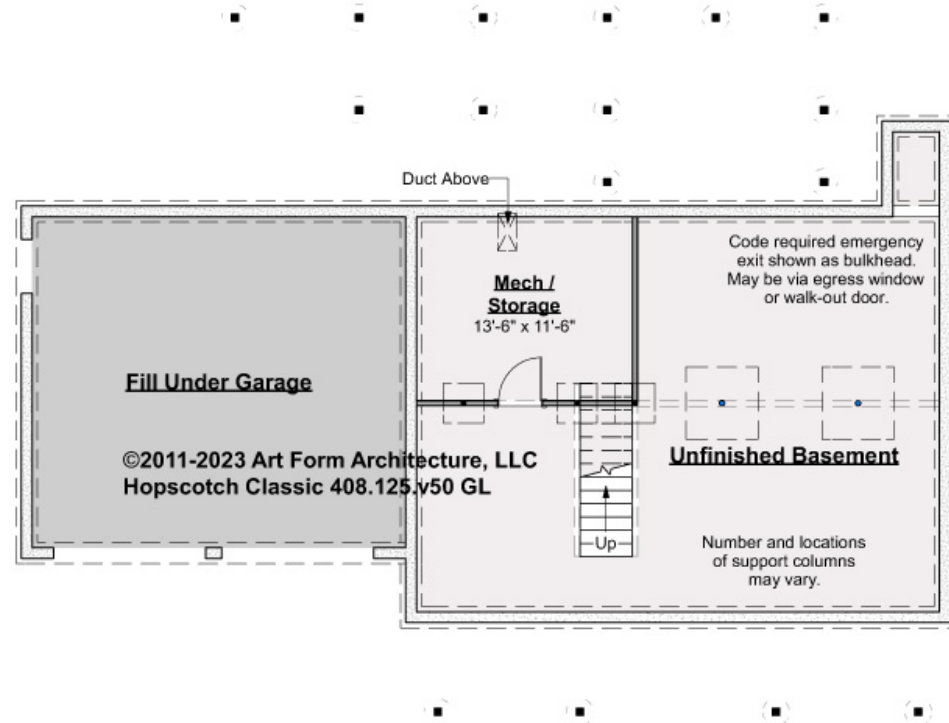
F1 LIVING AREA	1126 <sup>FT</sup>	F1 BEDROOMS	4	F1 BATHROOMS	2
Main	841.00 <sup>FT</sup>	Main	3.00	Main	2.00
Future	285.00 <sup>FT</sup>	Future	1.00	Future	
2 <sup>nd</sup> Unit	FT	2 <sup>nd</sup> Unit		2 <sup>nd</sup> Unit	



# HOPSCOTCH CLASSIC - BASEMENT

## 408.124.v50 GL

Some features shown are optional. Your Purchase & Sale Agreement governs, whether items are labeled "optional" in this document or not.



CLG HT SHOWN 7'-8"      CLG HT POSSIBLE 9'-0"

\* Major Change Fee, see website plan page for cost

F1 LIVING AREA		F1 BEDROOMS		F1 BATHROOMS	
	0 FT		0		0
Main	FT	Main		Main	
Future	FT	Future		Future	
2 <sup>nd</sup> Unit	FT	2 <sup>nd</sup> Unit		2 <sup>nd</sup> Unit	



Art Form Architecture, LLC

## HOPSCOTCH CLASSIC - FRONT ELEVATION

408.124.v50 GL

Some features shown are optional. Your Purchase & Sale Agreement governs, whether items are labeled "optional" in this document or not.





Art Form Architecture, LLC

## HOPSCOTCH CLASSIC - RIGHT ELEVATION

408.124.v50 GL

—  
Some features shown are optional. Your Purchase & Sale Agreement governs, whether items are labeled "optional" in this document or not.



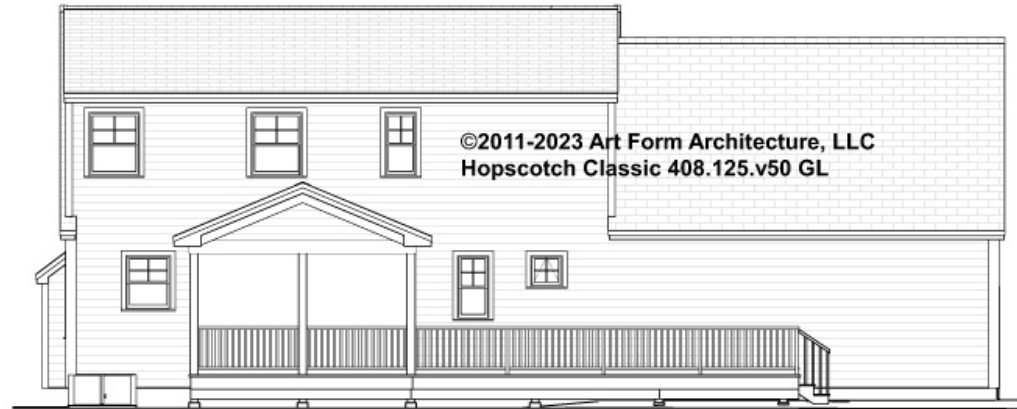


Art Form Architecture, LLC

## HOPSCOTCH CLASSIC - REAR ELEVATION

408.124.v50 GL

—  
Some features shown are optional. Your Purchase & Sale Agreement governs, whether items are labeled "optional" in this document or not.





Art Form Architecture, LLC

## HOPSCOTCH CLASSIC - LEFT ELEVATION

408.124.v50 GL

—  
Some features shown are optional. Your Purchase & Sale Agreement governs, whether items are labeled "optional" in this document or not.

©2011-2023 Art Form Architecture, LLC  
Hopscotch Classic 408.125.v50 GL







Art Form Architecture, LLC

## HOPSCOTCH CLASSIC - REAR RENDER

408.124.v50 GL

—  
Some features shown are optional. Your Purchase & Sale Agreement governs, whether items are labeled "optional" in this document or not.

