



Art Form Architecture, LLC

HARPER 872.124.v7 GL

Reverse plan available.

In addition to our Terms and Conditions (the "Terms"), please be aware of the following:

Art Form Architecture, LLC ("Artform") requires that our Drawings be built substantially as designed. Artform will not be obligated by or liable for use of this design with markups as part of any builder agreement. While we attempt to accommodate where possible and reasonable, and where the changes do not denigrate our design, any and all changes to Drawings must be approved in writing by Artform. It is recommended that you have your Drawing updated by Artform prior to attaching any Drawing to any builder agreement. Artform shall not be responsible for the misuse of or unauthorized alterations to any of its Drawings.



Width 43.00 ^{FT}

Depth 42.00 ^{FT}

Height 31.33 ^{FT}

| LIVING AREA | 2603 ^{FT} |
|----------------------|--------------------|
| Main | 2603 ^{FT} |
| Future | 0 ^{FT} |
| 2 nd Unit | 0 ^{FT} |

| BEDROOMS | 5 |
|----------------------|---|
| Main | 4 |
| Future | 1 |
| 2 nd Unit | 0 |

| BATHROOMS | 2.5 |
|----------------------|-----|
| Main | 2.5 |
| Future | 0 |
| 2 nd Unit | 0 |

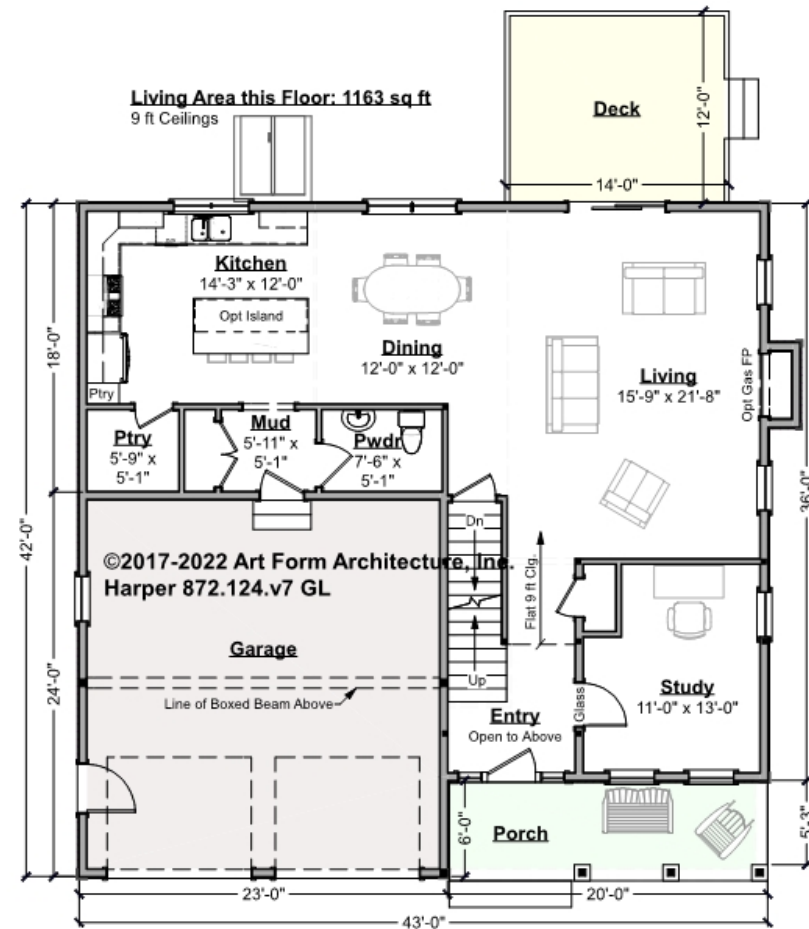


Art Form Architecture, LLC

HARPER - 1ST FLOOR

872.124.v7 GL

Some features shown are optional. Your Purchase & Sale Agreement governs, whether items are labeled "optional" in this document or not.



CLG HT SHOWN 9'-0"

CLG HT POSSIBLE 8'-0"

* Major Change Fee, see website plan page for cost

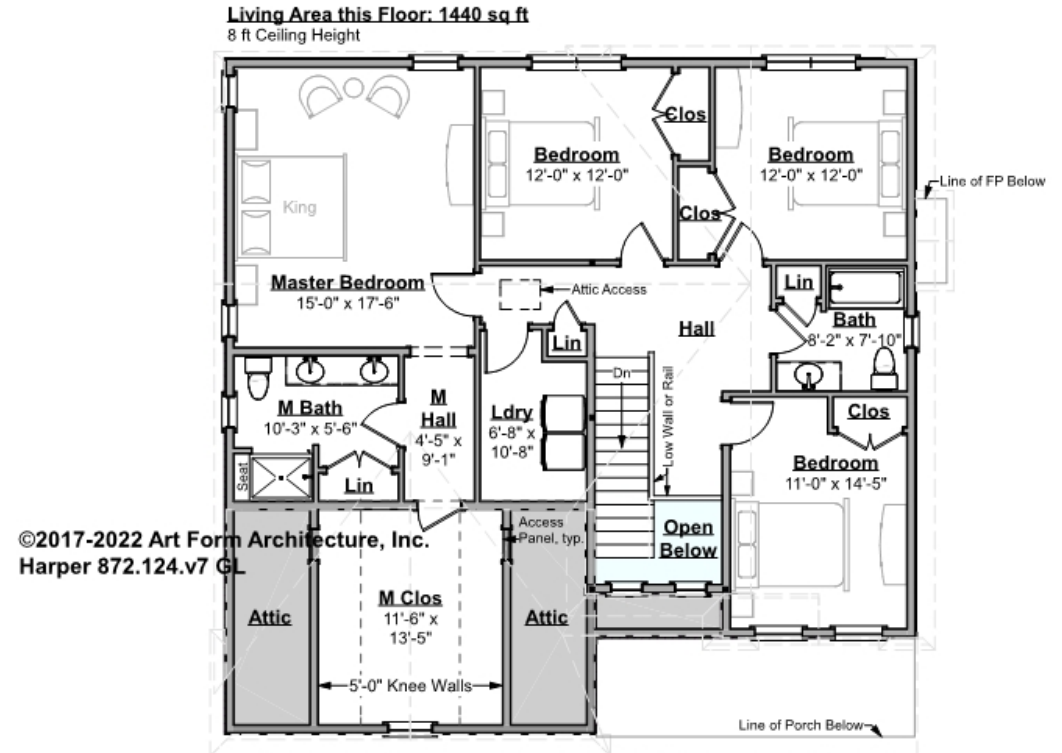
| F1 LIVING AREA | 1163 FT | F1 BEDROOMS | 1 | F1 BATHROOMS | 0.5 |
|----------------------|------------|----------------------|------|----------------------|------|
| Main | 1163.00 FT | Main | | Main | 0.50 |
| Future | FT | Future | 1.00 | Future | |
| 2 nd Unit | FT | 2 nd Unit | | 2 nd Unit | |



HARPER - 2ND FLOOR

872.124.v7 GL

Some features shown are optional. Your Purchase & Sale Agreement governs, whether items are labeled "optional" in this document or not.



CLG HT SHOWN 8'-0"

CLG HT POSSIBLE 9'-0"

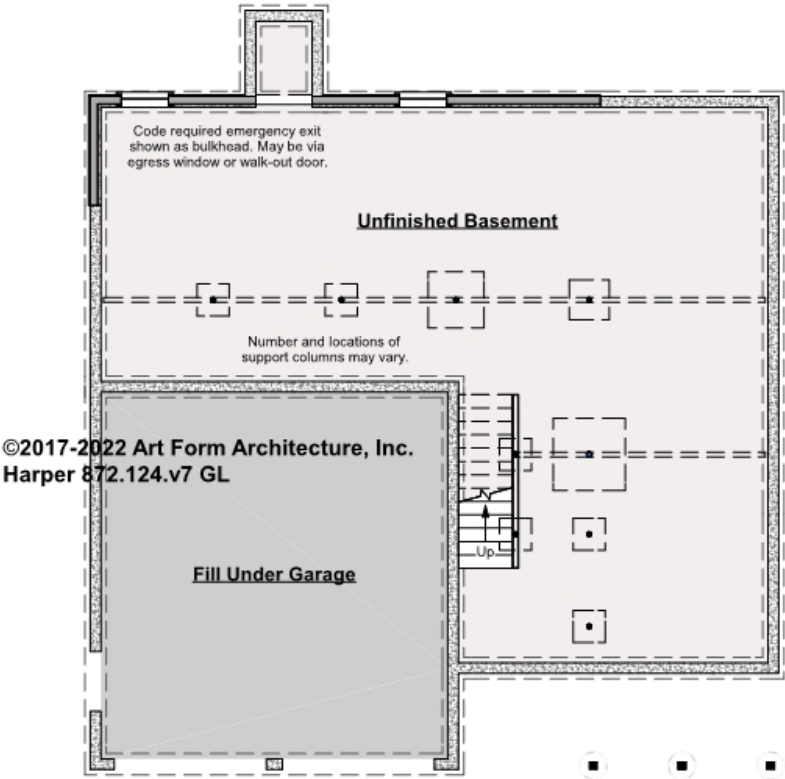
* Major Change Fee, see website plan page for cost

| F1 LIVING AREA | 1440 FT | F1 BEDROOMS | 4 | F1 BATHROOMS | 2 |
|----------------------|------------|----------------------|------|----------------------|------|
| Main | 1440.00 FT | Main | 4.00 | Main | 2.00 |
| Future | FT | Future | | Future | |
| 2 nd Unit | FT | 2 nd Unit | | 2 nd Unit | |



HARPER - BASEMENT
872.124.v7 GL

Some features shown are optional. Your Purchase & Sale Agreement governs, whether items are labeled "optional" in this document or not.



CLG HT SHOWN 7'-8" CLG HT POSSIBLE 9'-0"

** Major Change Fee, see website plan page for cost*

| F1 LIVING AREA | | 0 FT | F1 BEDROOMS | | 0 | F1 BATHROOMS | | 0 |
|----------------------|--|------|----------------------|--|---|----------------------|--|---|
| Main | | FT | Main | | | Main | | |
| Future | | FT | Future | | | Future | | |
| 2 nd Unit | | FT | 2 nd Unit | | | 2 nd Unit | | |



Art Form Architecture, LLC

HARPER - FRONT ELEVATION

872.124.v7 GL

Some features shown are optional. Your Purchase & Sale Agreement governs, whether items are labeled "optional" in this document or not.





Art Form Architecture, LLC

HARPER - RIGHT ELEVATION

872.124.v7 GL

Some features shown are optional. Your Purchase & Sale Agreement governs, whether items are labeled "optional" in this document or not.





Art Form Architecture, LLC

HARPER - REAR ELEVATION

872.124.v7 GL

Some features shown are optional. Your Purchase & Sale Agreement governs, whether items are labeled "optional" in this document or not.





Art Form Architecture, LLC

HARPER - LEFT ELEVATION

872.124.v7 GL

—

Some features shown are optional. Your Purchase & Sale Agreement governs, whether items are labeled "optional" in this document or not.





Art Form Architecture, LLC

HARPER - REAR RENDER

872.124.v7 GL

—

Some features shown are optional. Your Purchase & Sale Agreement governs, whether items are labeled "optional" in this document or not.

