



GAIRA

742.124.v13 GR

In addition to our Terms and Conditions (the "Terms"), please be aware of the following:

Art Form Architecture, LLC ("Artform") requires that our Drawings be built substantially as designed. Artform will not be obligated by or liable for use of this design with markups as part of any builder agreement. While we attempt to accommodate where possible and reasonable, and where the changes do not denigrate our design, any and all changes to Drawings must be approved in writing by Artform. It is recommended that you have your Drawing updated by Artform prior to attaching any Drawing to any builder agreement. Artform shall not be responsible for the misuse of or unauthorized alterations to any of its Drawings.



©2015-2023 Art Form Architecture, Inc.
Gaira 742.124.v13 GR

Width 40.00 FT

Depth 46.00 FT

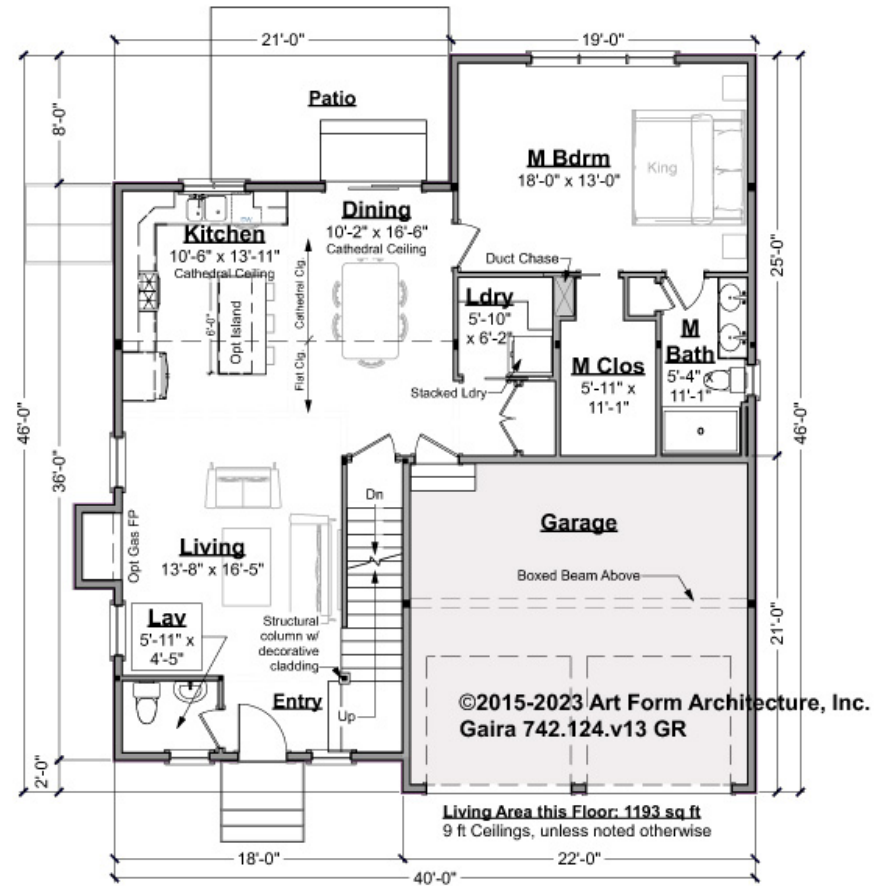
Height 27.25 FT

| LIVING AREA | | BEDROOMS | | BATHROOMS | |
|----------------------|---------|----------------------|---|----------------------|-----|
| | 2063 FT | | 3 | | 2.5 |
| Main | 2063 FT | Main | 3 | Main | 2.5 |
| Future | 0 FT | Future | 0 | Future | 0 |
| 2 nd Unit | 0 FT | 2 nd Unit | 0 | 2 nd Unit | 0 |



GAIRA - 1ST FLOOR
742.124.v13 GR

Some features shown are optional. Your Purchase & Sale Agreement governs, whether items are labeled "optional" in this document or not.



CLG HT SHOWN 9'-0" CLG HT POSSIBLE 8'-0"

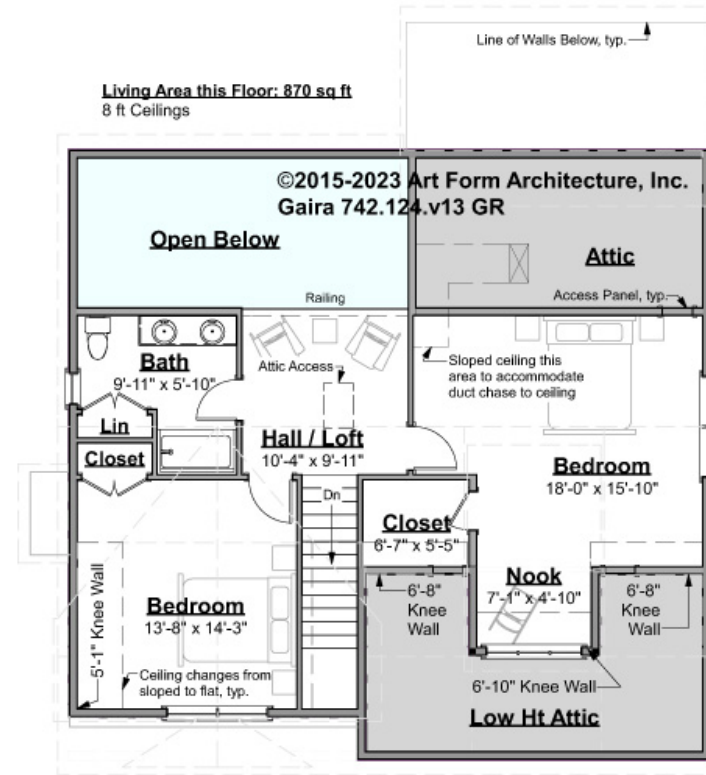
** Major Change Fee, see website plan page for cost*

| F1 LIVING AREA | 1193 FT | F1 BEDROOMS | 1 | F1 BATHROOMS | 1.5 |
|----------------------|------------|----------------------|------|----------------------|------|
| Main | 1193.00 FT | Main | 1.00 | Main | 1.50 |
| Future | FT | Future | | Future | |
| 2 nd Unit | FT | 2 nd Unit | | 2 nd Unit | |



GAIRA - 2ND FLOOR
742.124.v13 GR

Some features shown are optional. Your Purchase & Sale Agreement governs, whether items are labeled "optional" in this document or not.



CLG HT SHOWN 8'-0" CLG HT POSSIBLE 9'-0"

** Major Change Fee, see website plan page for cost*

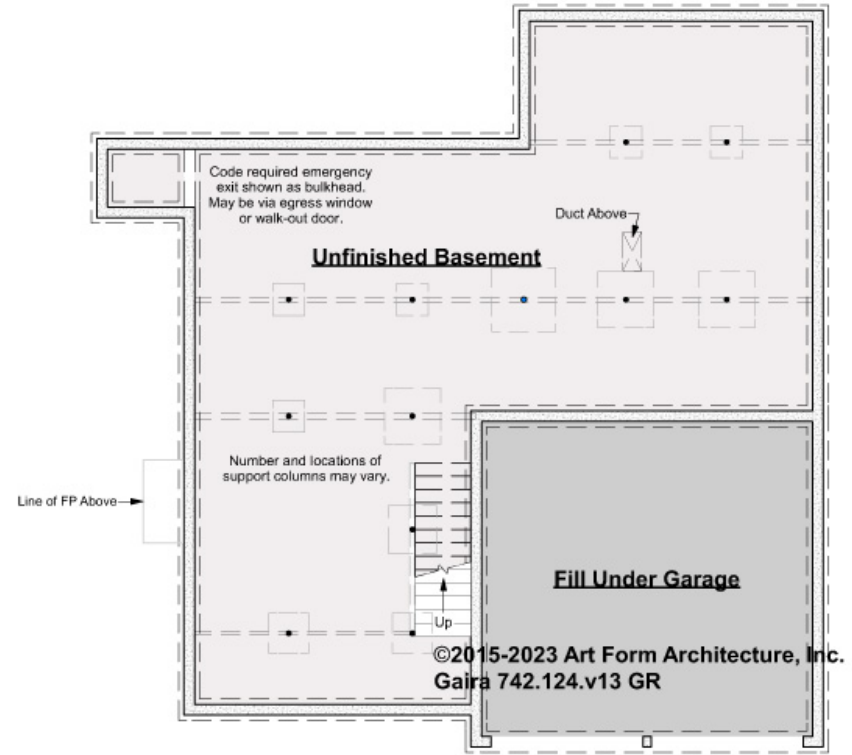
| F1 LIVING AREA | | F1 BEDROOMS | | F1 BATHROOMS | |
|----------------------|----------------------|----------------------|------|----------------------|------|
| | 870 ^{FT} | | 2 | | 1 |
| Main | 870.00 ^{FT} | Main | 2.00 | Main | 1.00 |
| Future | FT | Future | | Future | |
| 2 nd Unit | FT | 2 nd Unit | | 2 nd Unit | |



GAIRA - BASEMENT

742.124.v13 GR

Some features shown are optional. Your Purchase & Sale Agreement governs, whether items are labeled "optional" in this document or not.



CLG HT SHOWN 7'-8" CLG HT POSSIBLE 9'-0"

** Major Change Fee, see website plan page for cost*

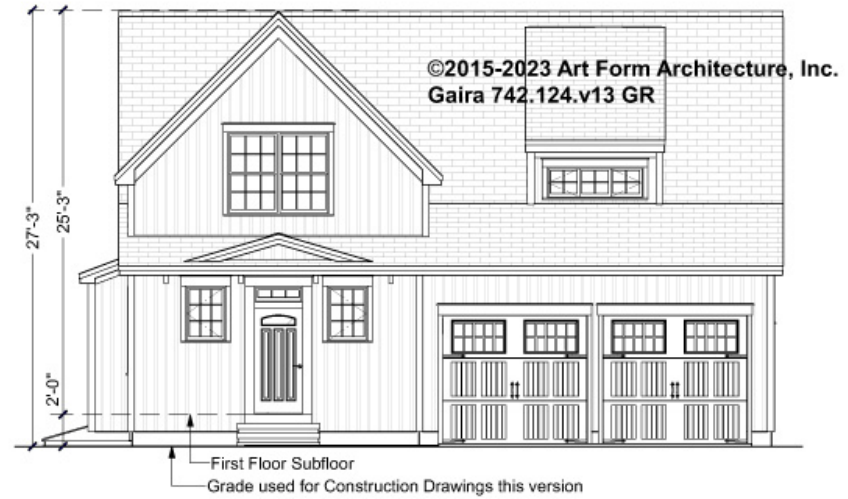
| F1 LIVING AREA | | 0 FT | F1 BEDROOMS | | 0 | F1 BATHROOMS | | 0 |
|----------------------|----|------|----------------------|--|---|----------------------|--|---|
| Main | FT | | Main | | | Main | | |
| Future | FT | | Future | | | Future | | |
| 2 nd Unit | FT | | 2 nd Unit | | | 2 nd Unit | | |



GAIRA - FRONT ELEVATION

742.124.v13 GR

Some features shown are optional. Your Purchase & Sale Agreement governs, whether items are labeled "optional" in this document or not.





Art Form Architecture, LLC

GAIRA - RIGHT ELEVATION

742.124.v13 GR

Some features shown are optional. Your Purchase & Sale Agreement governs, whether items are labeled "optional" in this document or not.



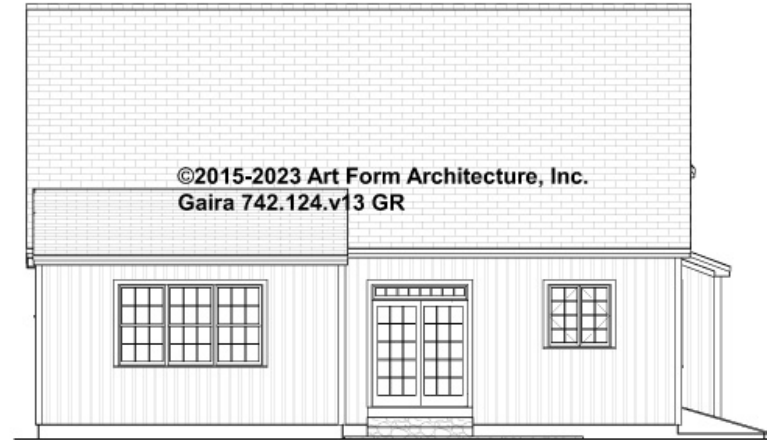


Art Form Architecture, LLC

GAIRA - REAR ELEVATION

742.124.v13 GR

Some features shown are optional. Your Purchase & Sale Agreement governs, whether items are labeled "optional" in this document or not.



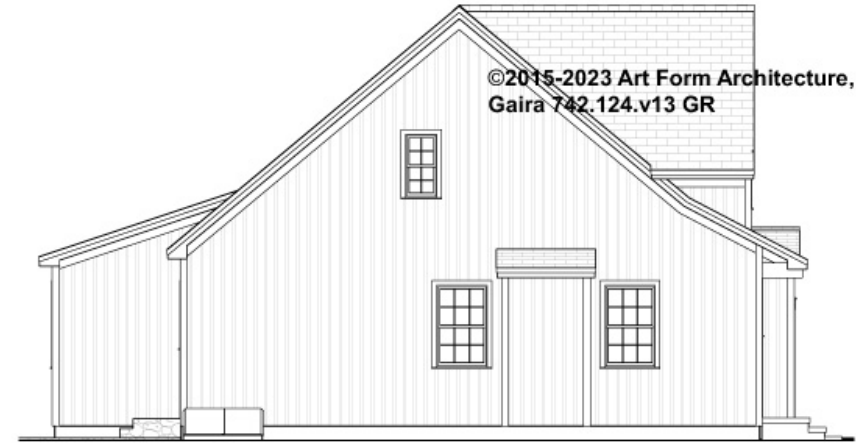


Art Form Architecture, LLC

GAIRA - LEFT ELEVATION

742.124.v13 GR

Some features shown are optional. Your Purchase & Sale Agreement governs, whether items are labeled "optional" in this document or not.





Art Form Architecture, LLC

GAIRA - REAR RENDER

742.124.v13 GR

Some features shown are optional. Your Purchase & Sale Agreement governs, whether items are labeled "optional" in this document or not.

