



Art Form Architecture, LLC

FOXGLOVE FARMHOUSE

051.124.v30 GR

In addition to our Terms and Conditions (the "Terms"), please be aware of the following:

Art Form Architecture, LLC ("Artform") requires that our Drawings be built substantially as designed. Artform will not be obligated by or liable for use of this design with markups as part of any builder agreement. While we attempt to accommodate where possible and reasonable, and where the changes do not denigrate our design, any and all changes to Drawings must be approved in writing by Artform. It is recommended that you have your Drawing updated by Artform prior to attaching any Drawing to any builder agreement. Artform shall not be responsible for the misuse of or unauthorized alterations to any of its Drawings.



Width 62.00 ^{FT}

Depth 36.00 ^{FT}

Height 31.67 ^{FT}

LIVING AREA		2359 ^{FT}	BEDROOMS		4	BATHROOMS		2.5
Main		2359 ^{FT}	Main		3	Main		2.5
Future		0 ^{FT}	Future		1	Future		0
2 nd Unit		0 ^{FT}	2 nd Unit		0	2 nd Unit		0

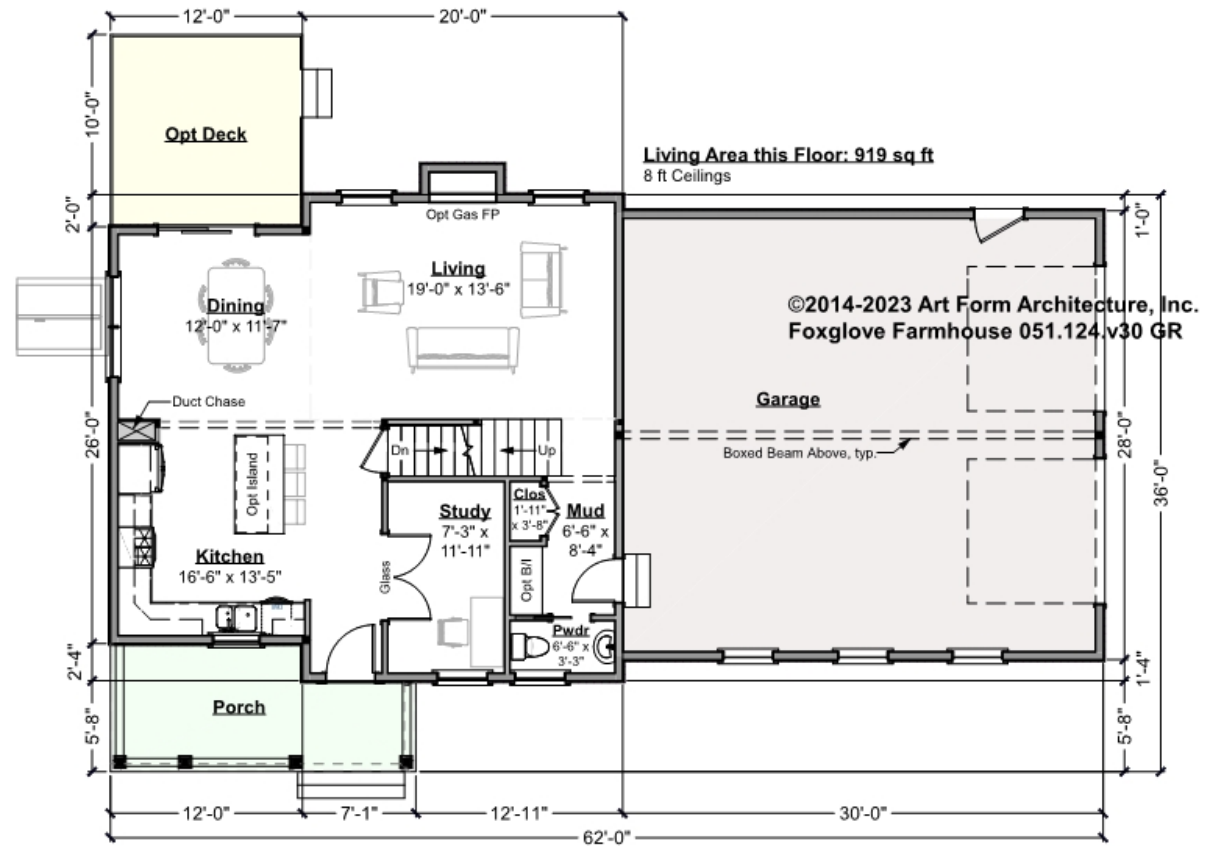


Art Form Architecture, LLC

FOXGLOVE FARMHOUSE - 1ST FLOOR

051.124.v30 GR

Some features shown are optional. Your Purchase & Sale Agreement governs, whether items are labeled "optional" in this document or not.



CLG HT SHOWN 8'-0" CLG HT POSSIBLE 8'-0"

* Major Change Fee, see website plan page for cost

F1 LIVING AREA 919 ^{FT}

Main 919.00 ^{FT}

Future FT

2nd Unit FT

F1 BEDROOMS 1

Main

Future 1.00

2nd Unit

F1 BATHROOMS 0.5

Main 0.50

Future

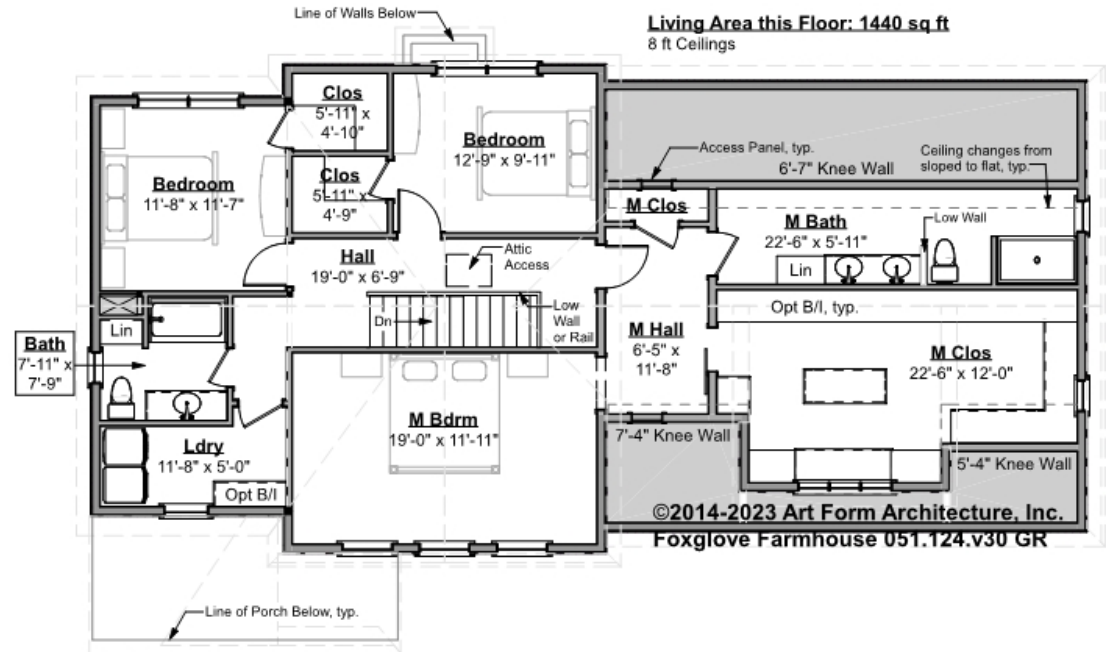
2nd Unit



FOXGLOVE FARMHOUSE - 2ND FLOOR

051.124.v30 GR

Some features shown are optional. Your Purchase & Sale Agreement governs, whether items are labeled "optional" in this document or not.



CLG HT SHOWN 8'-0"

CLG HT POSSIBLE 9'-0"

* Major Change Fee, see website plan page for cost

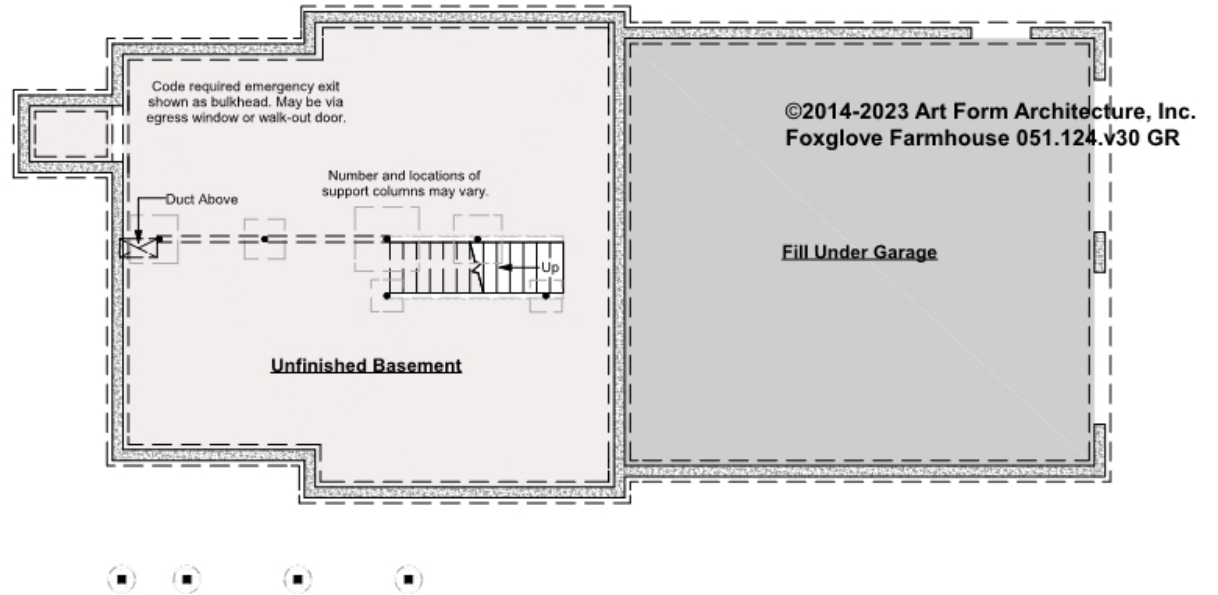
F1 LIVING AREA		1440 FT	F1 BEDROOMS		3	F1 BATHROOMS		2
Main		1440.00 FT	Main		3.00	Main		2.00
Future		FT	Future			Future		
2 nd Unit		FT	2 nd Unit			2 nd Unit		



FOXGLOVE FARMHOUSE - BASEMENT

051.124.v30 GR

Some features shown are optional. Your Purchase & Sale Agreement governs, whether items are labeled "optional" in this document or not.



CLG HT SHOWN 7'-8"

CLG HT POSSIBLE 8'-0"

* Major Change Fee, see website plan page for cost

F1 LIVING AREA		0 FT	F1 BEDROOMS		0	F1 BATHROOMS		0
Main		FT	Main			Main		
Future		FT	Future			Future		
2 nd Unit		FT	2 nd Unit			2 nd Unit		

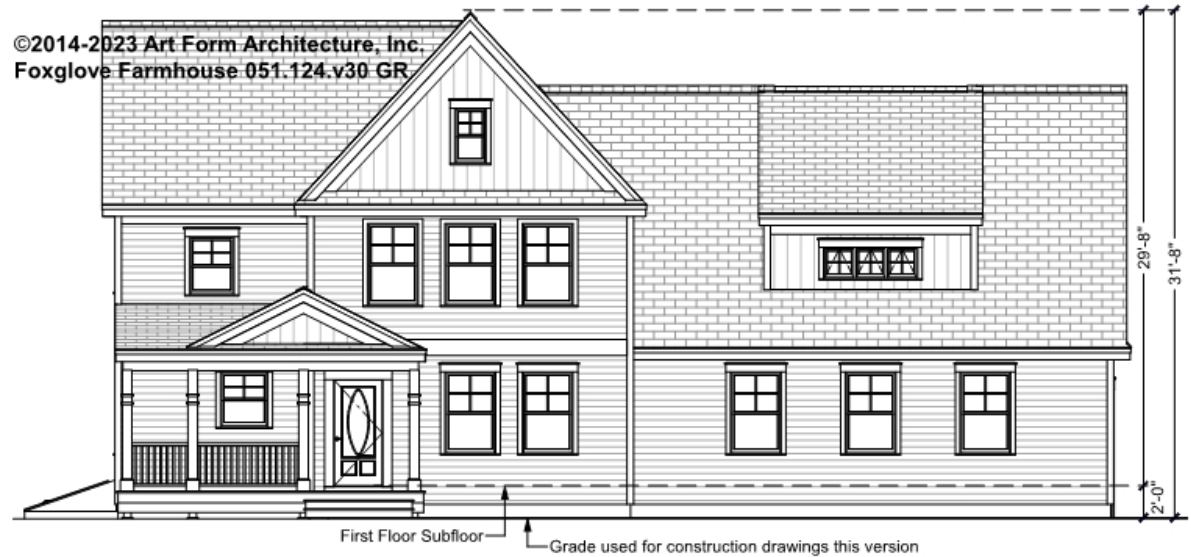


Art Form Architecture, LLC

FOXGLOVE FARMHOUSE - FRONT ELEVATION

051.124.v30 GR

Some features shown are optional. Your Purchase & Sale Agreement governs, whether items are labeled "optional" in this document or not.





Art Form Architecture, LLC

FOXGLOVE FARMHOUSE - RIGHT ELEVATION

051.124.v30 GR

—
Some features shown are optional. Your Purchase & Sale Agreement governs, whether items are labeled "optional" in this document or not.





Art Form Architecture, LLC

FOXGLOVE FARMHOUSE - REAR ELEVATION

051.124.v30 GR

—
Some features shown are optional. Your Purchase & Sale Agreement governs, whether items are labeled "optional" in this document or not.





Art Form Architecture, LLC

FOXGLOVE FARMHOUSE - LEFT ELEVATION

051.124.v30 GR

—
Some features shown are optional. Your Purchase & Sale Agreement governs, whether items are labeled "optional" in this document or not.

©2014-2023 Art Form Architecture, Inc.
Foxglove Farmhouse 051.124.v30 GR





Art Form Architecture, LLC

FOXGLOVE FARMHOUSE - REAR RENDER

051.124.v30 GR

—

Some features shown are optional. Your Purchase & Sale Agreement governs, whether items are labeled "optional" in this document or not.

