



Art Form Architecture, LLC

FOXGLOVE FARMHOUSE

051.124.v29 GR

In addition to our Terms and Conditions (the "Terms"), please be aware of the following:

Art Form Architecture, LLC ("Artform") requires that our Drawings be built substantially as designed. Artform will not be obligated by or liable for use of this design with markups as part of any builder agreement. While we attempt to accommodate where possible and reasonable, and where the changes do not denigrate our design, any and all changes to Drawings must be approved in writing by Artform. It is recommended that you have your Drawing updated by Artform prior to attaching any Drawing to any builder agreement. Artform shall not be responsible for the misuse of or unauthorized alterations to any of its Drawings.



Width 58.00 ^{FT}

Depth 34.42 ^{FT}

Height 31.50 ^{FT}

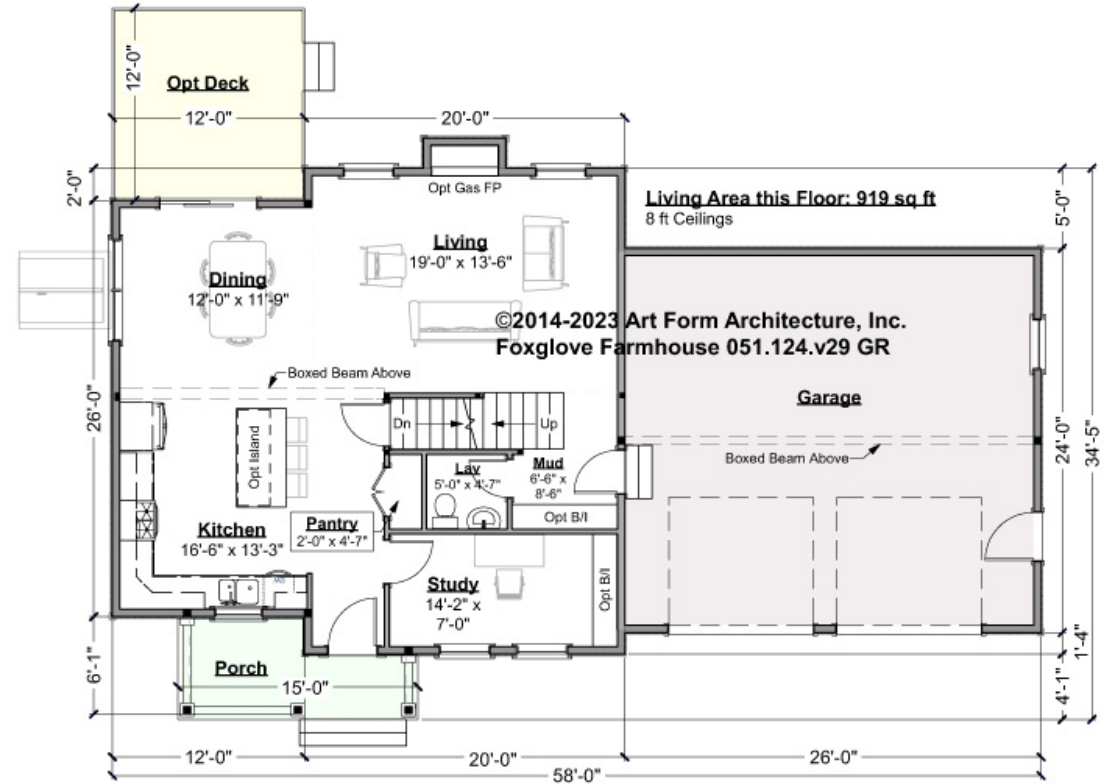
LIVING AREA		2267 ^{FT}	BEDROOMS		5	BATHROOMS		2.5
Main		1951 ^{FT}	Main		3	Main		2.5
Future		316 ^{FT}	Future		2	Future		0
2 nd Unit		0 ^{FT}	2 nd Unit		0	2 nd Unit		0



FOXGLOVE FARMHOUSE - 1ST FLOOR

051.124.v29 GR

Some features shown are optional. Your Purchase & Sale Agreement governs, whether items are labeled "optional" in this document or not.



CLG HT SHOWN 8'-0"

CLG HT POSSIBLE 9'-0"

* Major Change Fee, see website plan page for cost

F1 LIVING AREA	919 ^{FT}
-----------------------	-------------------

Main	919.00 ^{FT}
------	----------------------

Future	FT
--------	----

2 nd Unit	FT
----------------------	----

F1 BEDROOMS	1
--------------------	---

Main	
------	--

Future	1.00
--------	------

2 nd Unit	
----------------------	--

F1 BATHROOMS	0.5
---------------------	-----

Main	0.50
------	------

Future	
--------	--

2 nd Unit	
----------------------	--

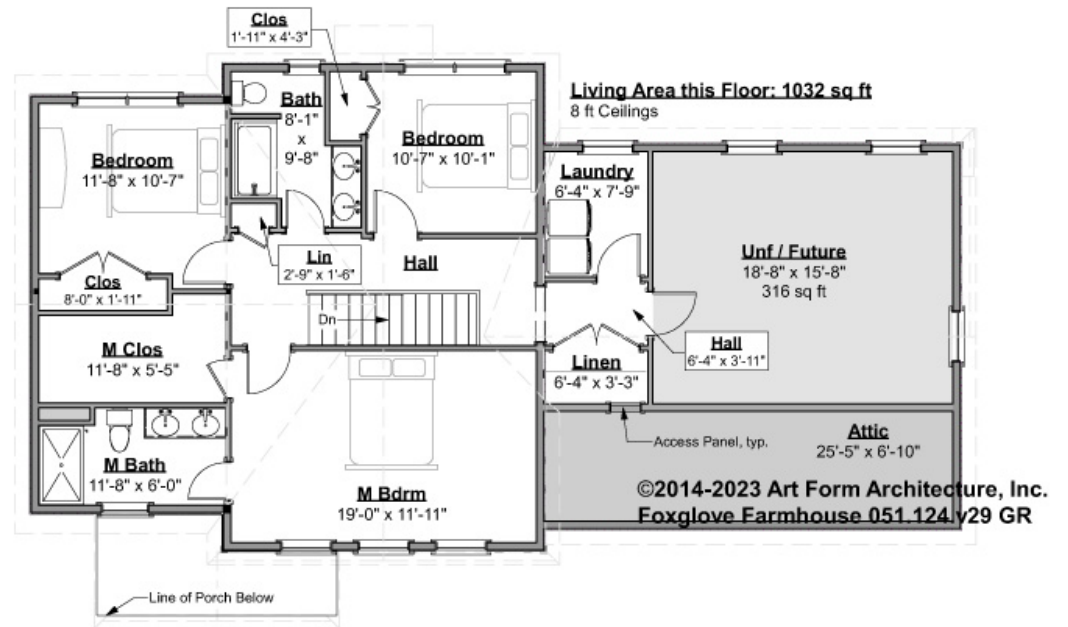


FOXGLOVE FARMHOUSE - 2ND FLOOR

051.124.v29 GR

Increasing the first floor to 9 ft ceilings will add two treads at the top of the stairs, tightening that hall

Some features shown are optional. Your Purchase & Sale Agreement governs, whether items are labeled "optional" in this document or not.



CLG HT SHOWN 8'-0"

CLG HT POSSIBLE 8'-0"

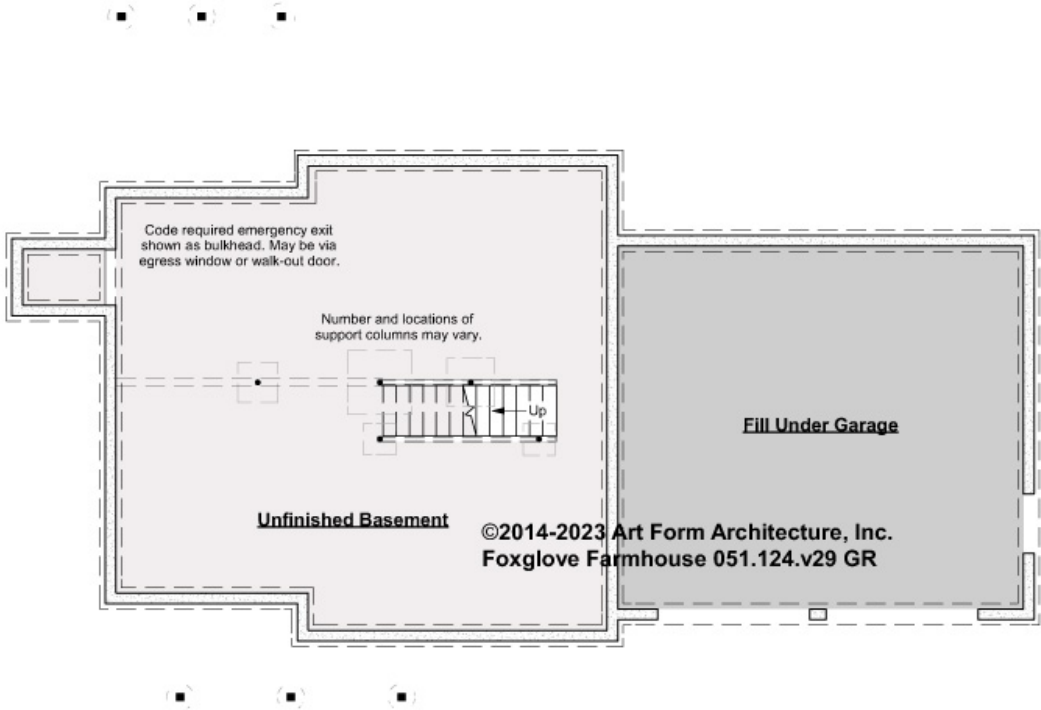
* Major Change Fee, see website plan page for cost

F1 LIVING AREA	1348 ^{FT}	F1 BEDROOMS	4	F1 BATHROOMS	2
Main	1032.00 ^{FT}	Main	3.00	Main	2.00
Future	316.00 ^{FT}	Future	1.00	Future	
2 nd Unit	^{FT}	2 nd Unit		2 nd Unit	



FOXGLOVE FARMHOUSE - BASEMENT
051.124.v29 GR

Some features shown are optional. Your Purchase & Sale Agreement governs, whether items are labeled "optional" in this document or not.



CLG HT SHOWN 7'-8" CLG HT POSSIBLE 9'-0"

* Major Change Fee, see website plan page for cost

F1 LIVING AREA		0 FT	F1 BEDROOMS		0	F1 BATHROOMS		0
Main		FT	Main			Main		
Future		FT	Future			Future		
2 nd Unit		FT	2 nd Unit			2 nd Unit		



Art Form Architecture, LLC

FOXGLOVE FARMHOUSE - FRONT ELEVATION

051.124.v29 GR

Some features shown are optional. Your Purchase & Sale Agreement governs, whether items are labeled "optional" in this document or not.





Art Form Architecture, LLC

FOXGLOVE FARMHOUSE - RIGHT ELEVATION

051.124.v29 GR

—
Some features shown are optional. Your Purchase & Sale Agreement governs, whether items are labeled "optional" in this document or not.





Art Form Architecture, LLC

FOXGLOVE FARMHOUSE - REAR ELEVATION

051.124.v29 GR

—
Some features shown are optional. Your Purchase & Sale Agreement governs, whether items are labeled "optional" in this document or not.





Art Form Architecture, LLC

FOXGLOVE FARMHOUSE - LEFT ELEVATION

051.124.v29 GR

—
Some features shown are optional. Your Purchase & Sale Agreement governs, whether items are labeled "optional" in this document or not.





Art Form Architecture, LLC

FOXGLOVE FARMHOUSE - REAR RENDER

051.124.v29 GR

—

Some features shown are optional. Your Purchase & Sale Agreement governs, whether items are labeled "optional" in this document or not.

