



FOXGLOVE FARMHOUSE

051.124.v26 GL

In addition to our Terms and Conditions (the "Terms"), please be aware of the following:

Art Form Architecture, LLC ("Artform") requires that our Drawings be built substantially as designed. Artform will not be obligated by or liable for use of this design with markups as part of any builder agreement. While we attempt to accommodate where possible and reasonable, and where the changes do not denigrate our design, any and all changes to Drawings must be approved in writing by Artform. It is recommended that you have your Drawing updated by Artform prior to attaching any Drawing to any builder agreement. Artform shall not be responsible for the misuse of or unauthorized alterations to any of its Drawings.



©2014-2022 Art Form Architecture, Inc
Foxglove Farmhouse 051.124.v26 GL

Width 58.00 FT

Depth 41.42 FT

Height 31.67 FT

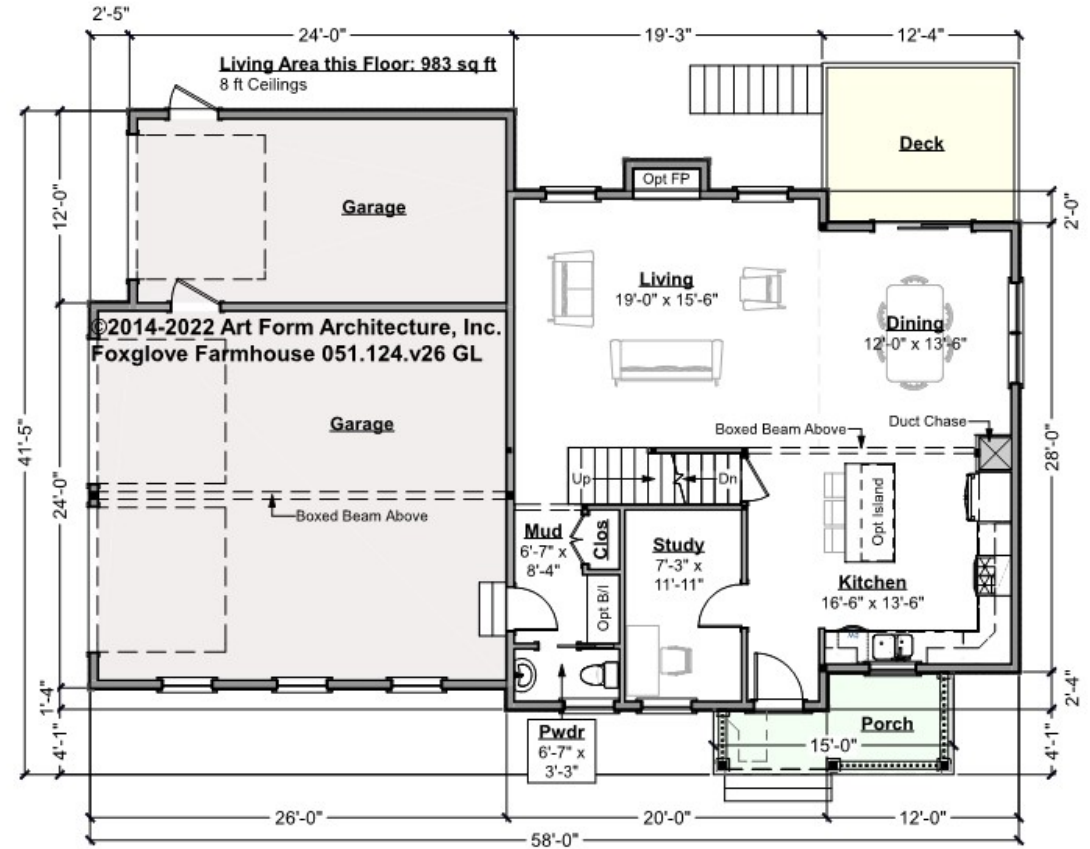
LIVING AREA		BEDROOMS		BATHROOMS	
	2051 FT		4		2.5
Main	2051 FT	Main	3	Main	2.5
Future	0 FT	Future	1	Future	0
2 nd Unit	0 FT	2 nd Unit	0	2 nd Unit	0



FOXGLOVE FARMHOUSE - 1ST FLOOR

051.124.v26 GL

Some features shown are optional. Your Purchase & Sale Agreement governs, whether items are labeled "optional" in this document or not.



CLG HT SHOWN 8'-0" CLG HT POSSIBLE 8'-0"

* Major Change Fee, see website plan page for cost

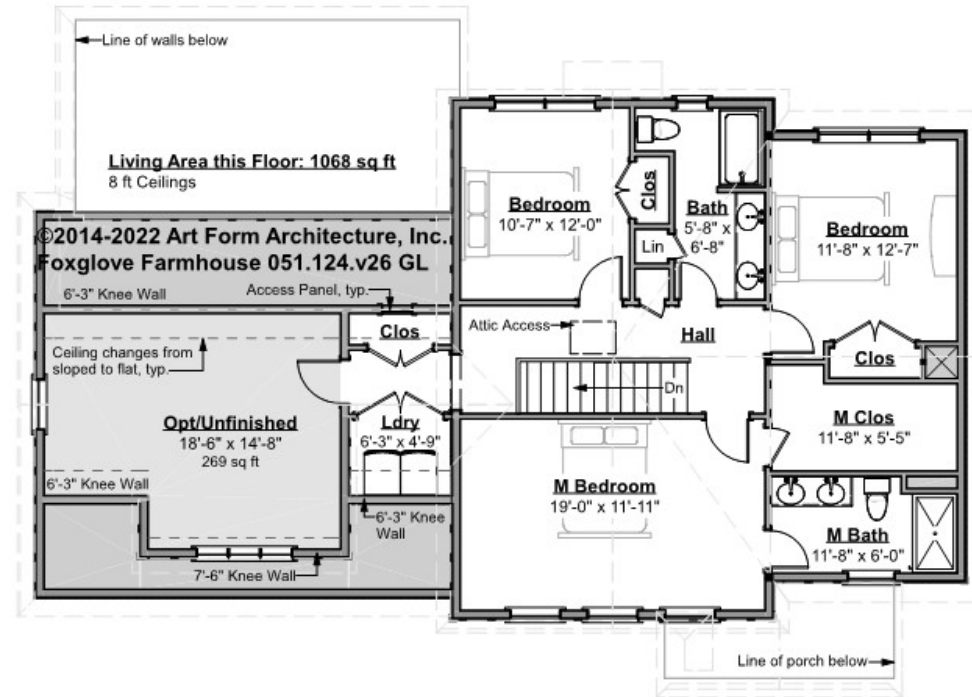
F1 LIVING AREA	983 ^{FT}	F1 BEDROOMS	1	F1 BATHROOMS	0.5
Main	983.00 ^{FT}	Main		Main	0.50
Future	FT	Future	1.00	Future	
2 nd Unit	FT	2 nd Unit		2 nd Unit	



FOXGLOVE FARMHOUSE - 2ND FLOOR

051.124.v26 GL

Some features shown are optional. Your Purchase & Sale Agreement governs, whether items are labeled "optional" in this document or not.



CLG HT SHOWN 8'-0" CLG HT POSSIBLE 9'-0"

* Major Change Fee, see website plan page for cost

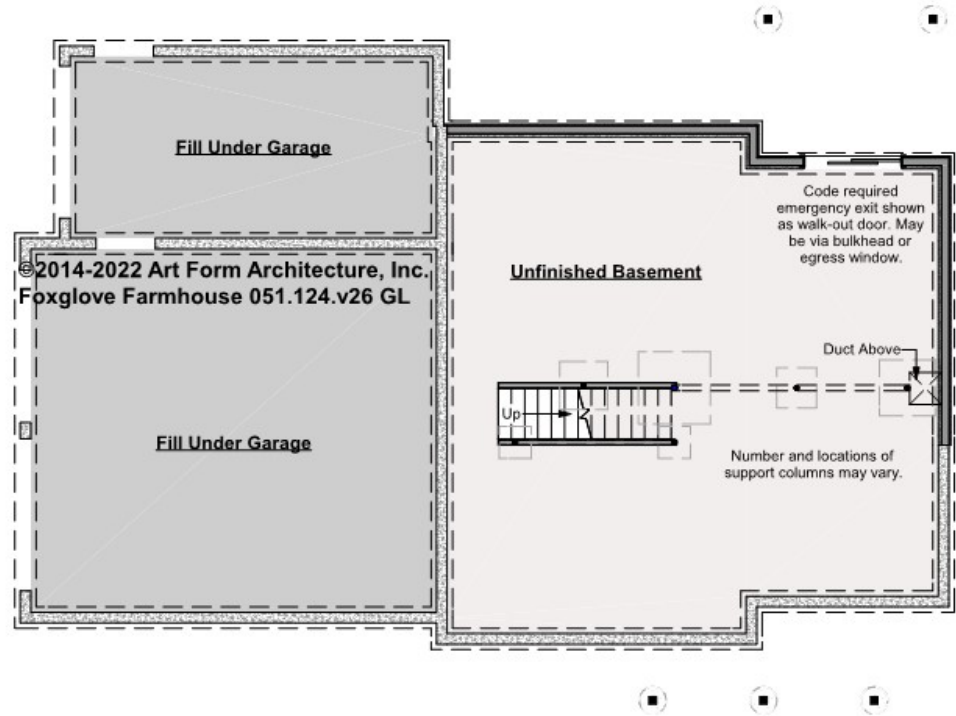
F1 LIVING AREA	1068 FT	F1 BEDROOMS	3	F1 BATHROOMS	2
Main	1068.00 FT	Main	3.00	Main	2.00
Future	FT	Future		Future	
2 nd Unit	FT	2 nd Unit		2 nd Unit	



FOXGLOVE FARMHOUSE - BASEMENT

051.124.v26 GL

Some features shown are optional. Your Purchase & Sale Agreement governs, whether items are labeled "optional" in this document or not.



CLG HT SHOWN 7'-8" CLG HT POSSIBLE 9'-0"

* Major Change Fee, see website plan page for cost

F1 LIVING AREA		F1 BEDROOMS		F1 BATHROOMS	
	0 FT		0		0
Main	FT	Main		Main	
Future	FT	Future		Future	
2 nd Unit	FT	2 nd Unit		2 nd Unit	



Art Form Architecture, LLC

FOXGLOVE FARMHOUSE - FRONT ELEVATION

051.124.v26 GL

Some features shown are optional. Your Purchase & Sale Agreement governs, whether items are labeled "optional" in this document or not.



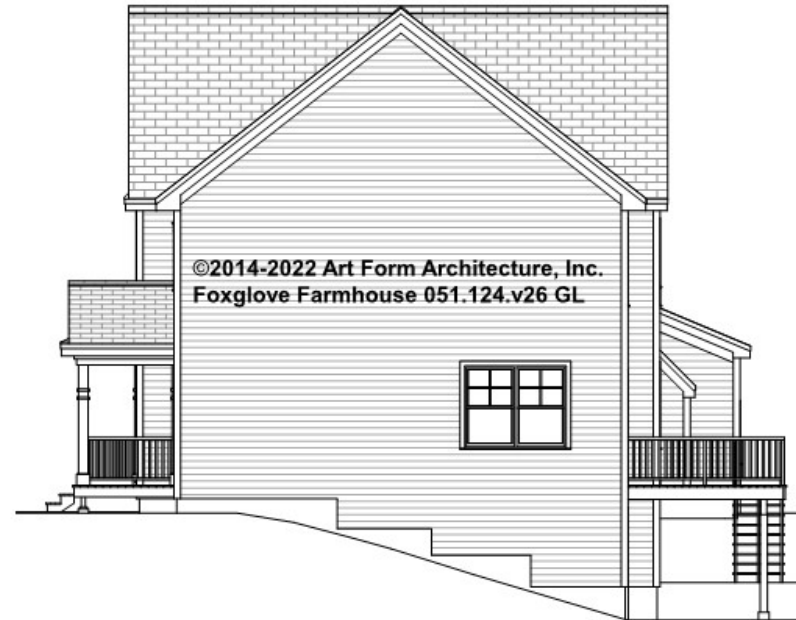


Art Form Architecture, LLC

FOXGLOVE FARMHOUSE - RIGHT ELEVATION

051.124.v26 GL

—
Some features shown are optional. Your Purchase & Sale Agreement governs, whether items are labeled "optional" in this document or not.





Art Form Architecture, LLC

FOXGLOVE FARMHOUSE - REAR ELEVATION

051.124.v26 GL

Some features shown are optional. Your Purchase & Sale Agreement governs, whether items are labeled "optional" in this document or not.





Art Form Architecture, LLC

FOXGLOVE FARMHOUSE - LEFT ELEVATION

051.124.v26 GL

—
Some features shown are optional. Your Purchase & Sale Agreement governs, whether items are labeled "optional" in this document or not.





Art Form Architecture, LLC

FOXGLOVE FARMHOUSE - REAR RENDER

051.124.v26 GL

—
Some features shown are optional. Your Purchase & Sale Agreement governs, whether items are labeled "optional" in this document or not.

