



FOXGLOVE FARMHOUSE

051.124.v22 GR

Reverse plan available.

In addition to our Terms and Conditions (the "Terms"), please be aware of the following:

Art Form Architecture, LLC ("Artform") requires that our Drawings be built substantially as designed. Artform will not be obligated by or liable for use of this design with markups as part of any builder agreement. While we attempt to accommodate where possible and reasonable, and where the changes do not denigrate our design, any and all changes to Drawings must be approved in writing by Artform. It is recommended that you have your Drawing updated by Artform prior to attaching any Drawing to any builder agreement. Artform shall not be responsible for the misuse of or unauthorized alterations to any of its Drawings.



©2014-2023 Art Form Architecture, Inc.
Foxglove Farmhouse 051.124.v22 GR

Width 58.00 FT

Depth 34.42 FT

Height 31.67 FT

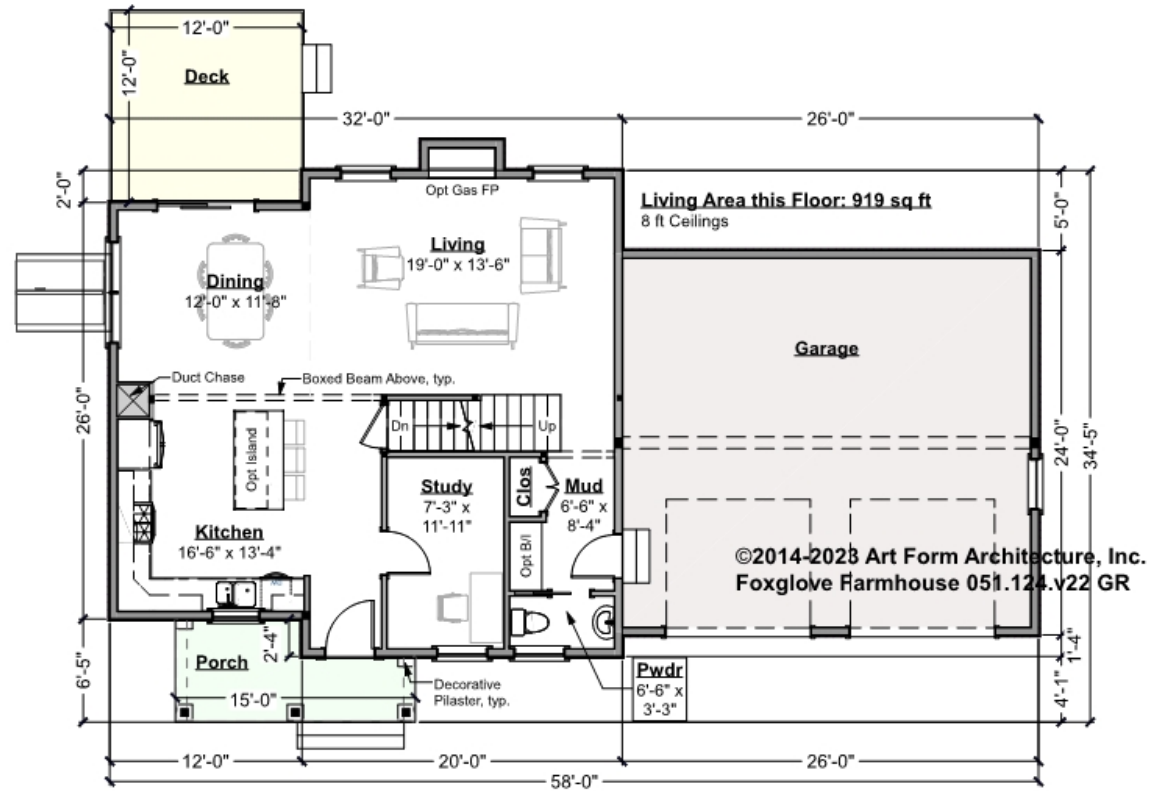
LIVING AREA		BEDROOMS		BATHROOMS	
	2202 FT ²		5		2.5
Main	2202 FT ²	Main	4	Main	2.5
Future	0 FT ²	Future	1	Future	0
2 nd Unit	0 FT ²	2 nd Unit	0	2 nd Unit	0



FOXGLOVE FARMHOUSE - 1ST FLOOR

051.124.v22 GR

Some features shown are optional. Your Purchase & Sale Agreement governs, whether items are labeled "optional" in this document or not.



CLG HT SHOWN 8'-0" CLG HT POSSIBLE 9'-0"

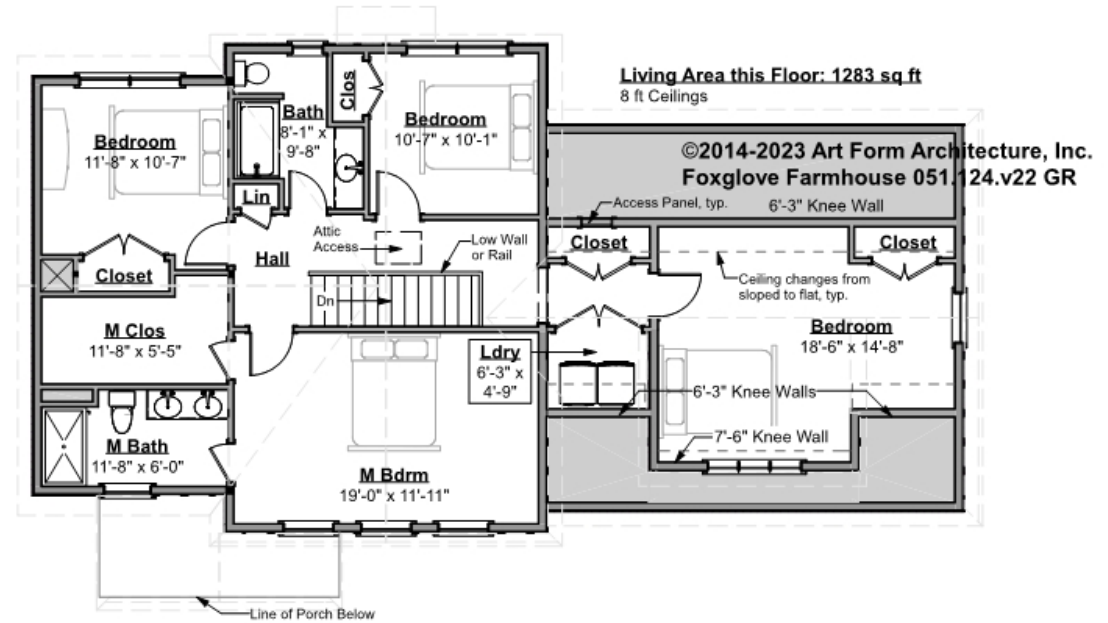
* Major Change Fee, see website plan page for cost

F1 LIVING AREA	919 ^{FT}	F1 BEDROOMS	1	F1 BATHROOMS	0.5
Main	919.00 ^{FT}	Main		Main	0.50
Future	FT	Future	1.00	Future	
2 nd Unit	FT	2 nd Unit		2 nd Unit	



FOXGLOVE FARMHOUSE - 2ND FLOOR 051.124.v22 GR

Some features shown are optional. Your Purchase & Sale Agreement governs, whether items are labeled "optional" in this document or not.



CLG HT SHOWN 8'-0" CLG HT POSSIBLE 9'-0"

* Major Change Fee, see website plan page for cost

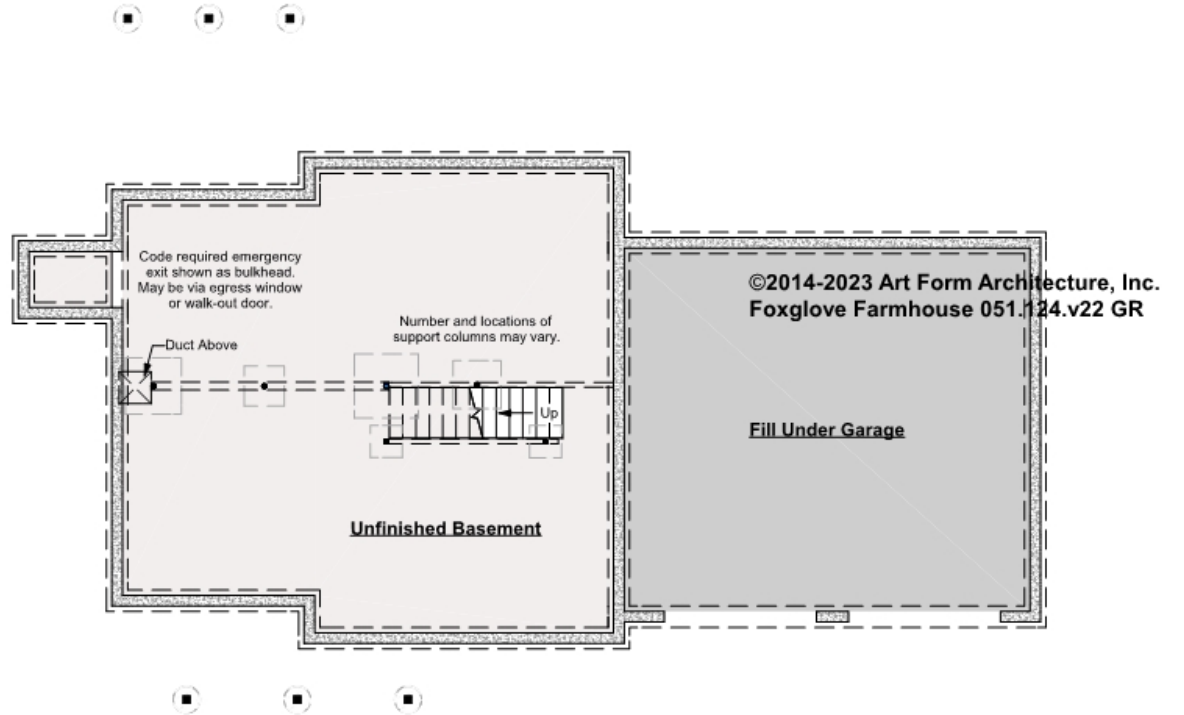
F1 LIVING AREA	1283 FT	F1 BEDROOMS	4	F1 BATHROOMS	2
Main	1283.00 FT	Main	4.00	Main	2.00
Future	FT	Future		Future	
2 nd Unit	FT	2 nd Unit		2 nd Unit	



FOXGLOVE FARMHOUSE - BASEMENT

051.124.v22 GR

Some features shown are optional. Your Purchase & Sale Agreement governs, whether items are labeled "optional" in this document or not.



CLG HT SHOWN 7'-8" CLG HT POSSIBLE 9'-0"

* Major Change Fee, see website plan page for cost

F1 LIVING AREA		F1 BEDROOMS		F1 BATHROOMS	
	0 FT		0		0
Main	FT	Main		Main	
Future	FT	Future		Future	
2 nd Unit	FT	2 nd Unit		2 nd Unit	



Art Form Architecture, LLC

FOXGLOVE FARMHOUSE - FRONT ELEVATION

051.124.v22 GR

Some features shown are optional. Your Purchase & Sale Agreement governs, whether items are labeled "optional" in this document or not.



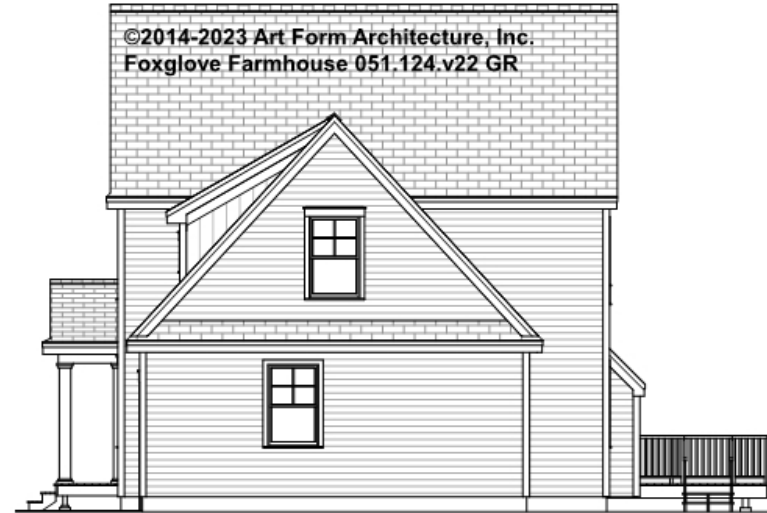


Art Form Architecture, LLC

FOXGLOVE FARMHOUSE - RIGHT ELEVATION

051.124.v22 GR

—
Some features shown are optional. Your Purchase & Sale Agreement governs, whether items are labeled "optional" in this document or not.





Art Form Architecture, LLC

FOXGLOVE FARMHOUSE - REAR ELEVATION

051.124.v22 GR

—
Some features shown are optional. Your Purchase & Sale Agreement governs, whether items are labeled "optional" in this document or not.



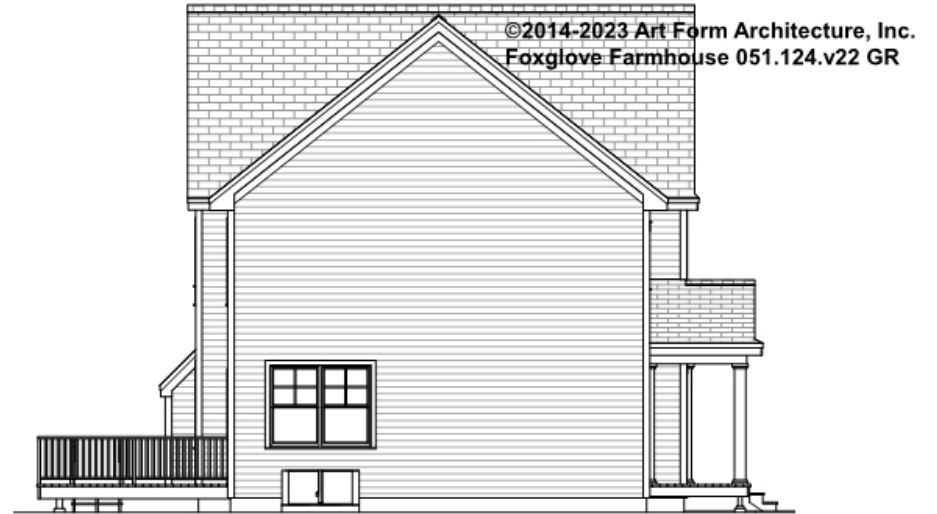


Art Form Architecture, LLC

FOXGLOVE FARMHOUSE - LEFT ELEVATION

051.124.v22 GR

—
Some features shown are optional. Your Purchase & Sale Agreement governs, whether items are labeled "optional" in this document or not.





Art Form Architecture, LLC

FOXGLOVE FARMHOUSE - REAR RENDER

051.124.v22 GR

—
Some features shown are optional. Your Purchase & Sale Agreement governs, whether items are labeled "optional" in this document or not.

