



FOXGLOVE FARMHOUSE

051.124.v17 GL

In addition to our Terms and Conditions (the "Terms"), please be aware of the following:

Art Form Architecture, LLC ("Artform") requires that our Drawings be built substantially as designed. Artform will not be obligated by or liable for use of this design with markups as part of any builder agreement. While we attempt to accommodate where possible and reasonable, and where the changes do not denigrate our design, any and all changes to Drawings must be approved in writing by Artform. It is recommended that you have your Drawing updated by Artform prior to attaching any Drawing to any builder agreement. Artform shall not be responsible for the misuse of or unauthorized alterations to any of its Drawings.



Width 58.00 FT

Depth 34.42 FT

Height 31.66 FT

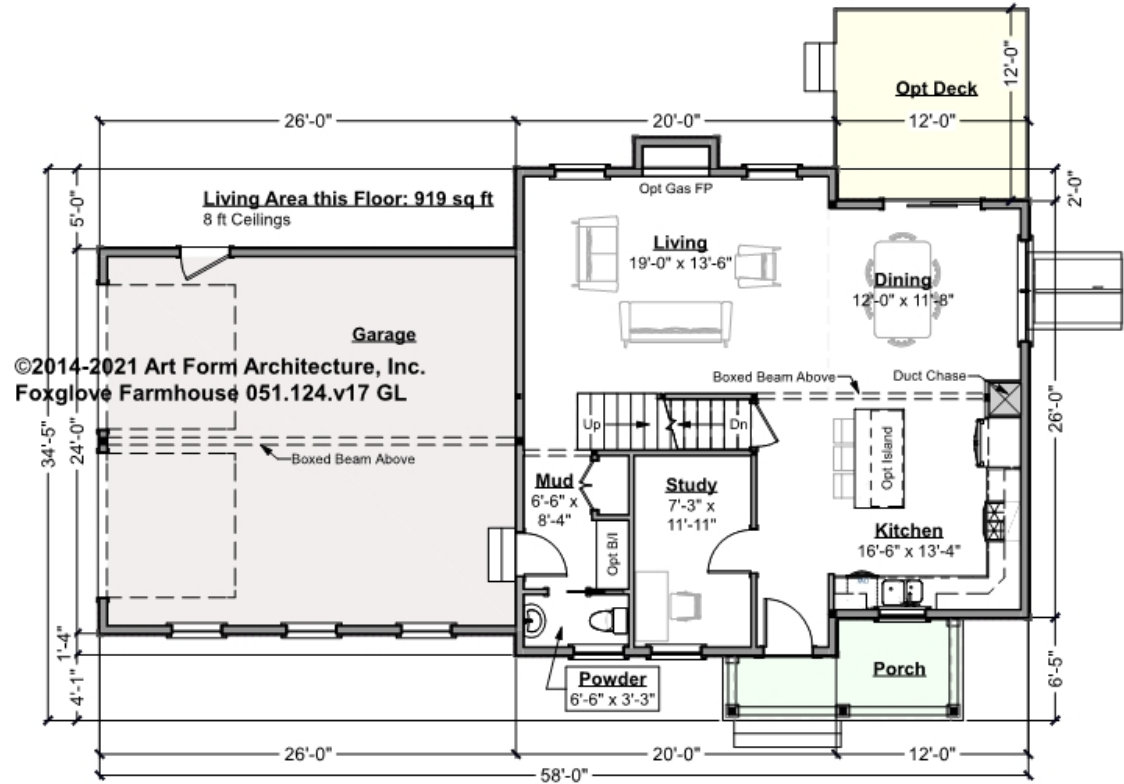
| LIVING AREA | | BEDROOMS | | BATHROOMS | |
|----------------------|---------|----------------------|---|----------------------|-----|
| | 2150 FT | | 5 | | 2.5 |
| Main | 1923 FT | Main | 3 | Main | 2.5 |
| Future | 227 FT | Future | 2 | Future | 0 |
| 2 nd Unit | 0 FT | 2 nd Unit | 0 | 2 nd Unit | 0 |



FOXGLOVE FARMHOUSE - 1ST FLOOR

051.124.v17 GL

Some features shown are optional. Your Purchase & Sale Agreement governs, whether items are labeled "optional" in this document or not.



©2014-2021 Art Form Architecture, Inc.
Foxglove Farmhouse 051.124.v17 GL

CLG HT SHOWN 8'-0" CLG HT POSSIBLE 8'-0"

* Major Change Fee, see website plan page for cost

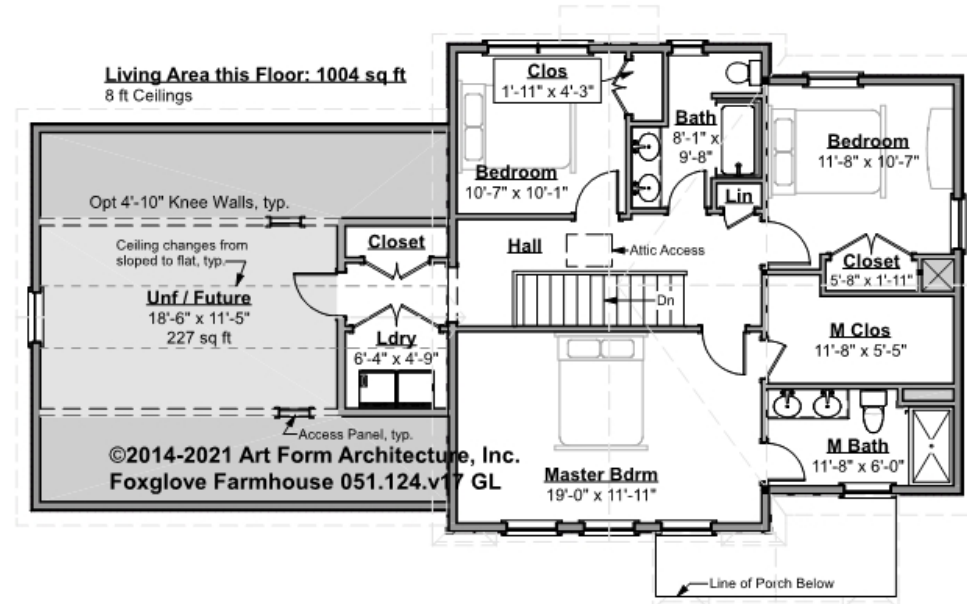
| F1 LIVING AREA | 919 ^{FT} | F1 BEDROOMS | 1 | F1 BATHROOMS | 0.5 |
|----------------------|----------------------|----------------------|------|----------------------|------|
| Main | 919.00 ^{FT} | Main | 0.00 | Main | 0.50 |
| Future | 0.00 ^{FT} | Future | 1.00 | Future | 0.00 |
| 2 nd Unit | 0.00 ^{FT} | 2 nd Unit | 0.00 | 2 nd Unit | 0.00 |



FOXGLOVE FARMHOUSE - 2ND FLOOR

051.124.v17 GL

Some features shown are optional. Your Purchase & Sale Agreement governs, whether items are labeled "optional" in this document or not.



CLG HT SHOWN 8'-0"

CLG HT POSSIBLE 8'-0"

* Major Change Fee, see website plan page for cost

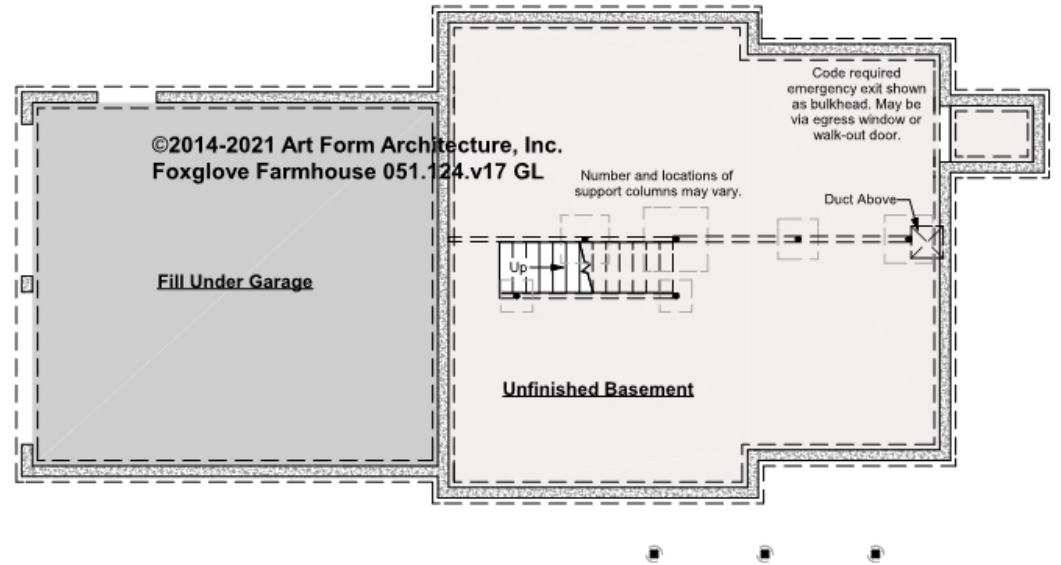
| F1 LIVING AREA | 1231 ^{FT} | F1 BEDROOMS | 4 | F1 BATHROOMS | 2 |
|----------------------|-----------------------|----------------------|------|----------------------|------|
| Main | 1004.00 ^{FT} | Main | 3.00 | Main | 2.00 |
| Future | 227.00 ^{FT} | Future | 1.00 | Future | 0.00 |
| 2 nd Unit | 0.00 ^{FT} | 2 nd Unit | 0.00 | 2 nd Unit | 0.00 |



FOXGLOVE FARMHOUSE - BASEMENT

051.124.v17 GL

Some features shown are optional. Your Purchase & Sale Agreement governs, whether items are labeled "optional" in this document or not.



CLG HT SHOWN 7'-8" CLG HT POSSIBLE 9'-0"

* Major Change Fee, see website plan page for cost

| F1 LIVING AREA | | F1 BEDROOMS | | F1 BATHROOMS | |
|----------------------|---------|----------------------|------|----------------------|------|
| | 0 FT | | 0 | | 0 |
| Main | 0.00 FT | Main | 0.00 | Main | 0.00 |
| Future | 0.00 FT | Future | 0.00 | Future | 0.00 |
| 2 nd Unit | 0.00 FT | 2 nd Unit | 0.00 | 2 nd Unit | 0.00 |



Art Form Architecture, LLC

FOXGLOVE FARMHOUSE - FRONT ELEVATION

051.124.v17 GL

—
Some features shown are optional. Your Purchase & Sale Agreement governs, whether items are labeled "optional" in this document or not.



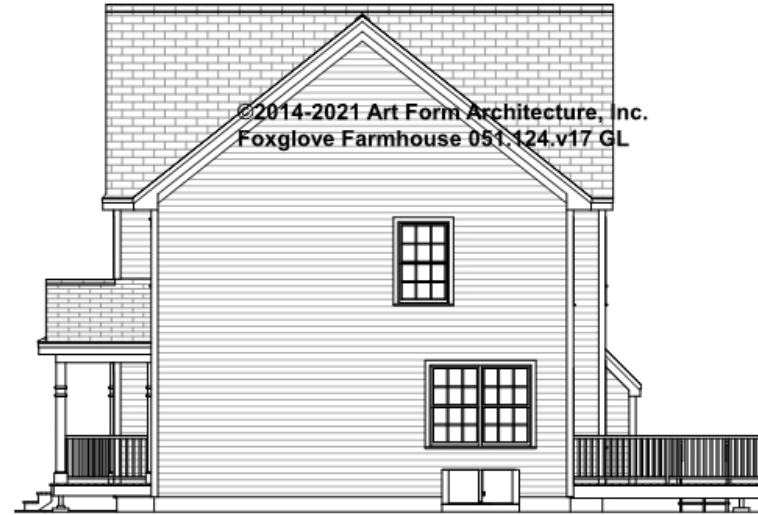


Art Form Architecture, LLC

FOXGLOVE FARMHOUSE - RIGHT ELEVATION

051.124.v17 GL

—
Some features shown are optional. Your Purchase & Sale Agreement governs, whether items are labeled "optional" in this document or not.





Art Form Architecture, LLC

FOXGLOVE FARMHOUSE - REAR ELEVATION

051.124.v17 GL

—
Some features shown are optional. Your Purchase & Sale Agreement governs, whether items are labeled "optional" in this document or not.





Art Form Architecture, LLC

FOXGLOVE FARMHOUSE - LEFT ELEVATION

051.124.v17 GL

Some features shown are optional. Your Purchase & Sale Agreement governs, whether items are labeled "optional" in this document or not.

