



# FIONA

## 395.124.v7 GL

In addition to our Terms and Conditions (the "Terms"), please be aware of the following:

Art Form Architecture, LLC ("Artform") requires that our Drawings be built substantially as designed. Artform will not be obligated by or liable for use of this design with markups as part of any builder agreement. While we attempt to accommodate where possible and reasonable, and where the changes do not denigrate our design, any and all changes to Drawings must be approved in writing by Artform. It is recommended that you have your Drawing updated by Artform prior to attaching any Drawing to any builder agreement. Artform shall not be responsible for the misuse of or unauthorized alterations to any of its Drawings.



Width 71.00 FT

Depth 45.33 FT

Height 26.17 FT

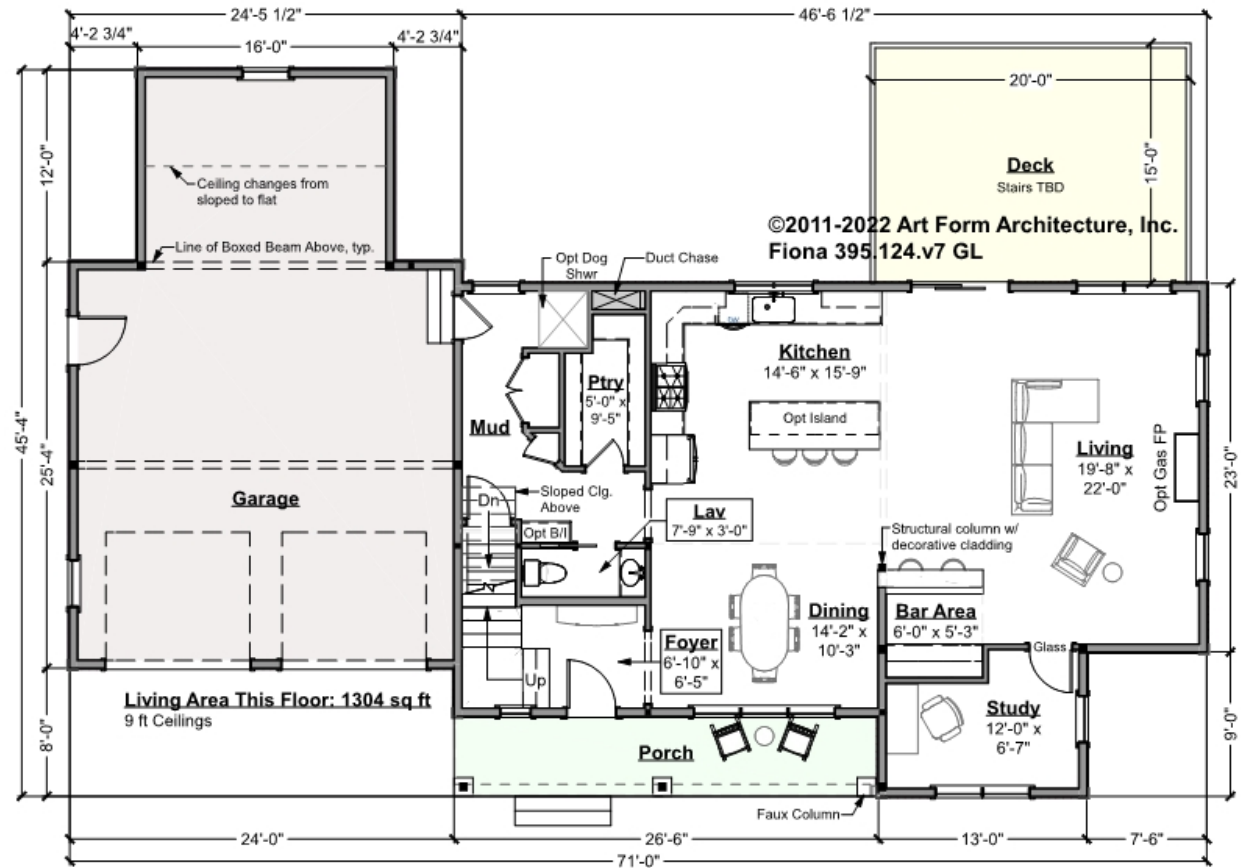
LIVING AREA		BEDROOMS		BATHROOMS	
	3004 FT		4		3.5
Main	2941 FT	Main	3	Main	2.5
Future	63 FT	Future	1	Future	1
2 <sup>nd</sup> Unit	0 FT	2 <sup>nd</sup> Unit	0	2 <sup>nd</sup> Unit	0



# FIONA - 1<sup>ST</sup> FLOOR

## 395.124.v7 GL

Some features shown are optional. Your Purchase & Sale Agreement governs, whether items are labeled "optional" in this document or not.



CLG HT SHOWN 9'-0"      CLG HT POSSIBLE 8'-0"

\* Major Change Fee, see website plan page for cost

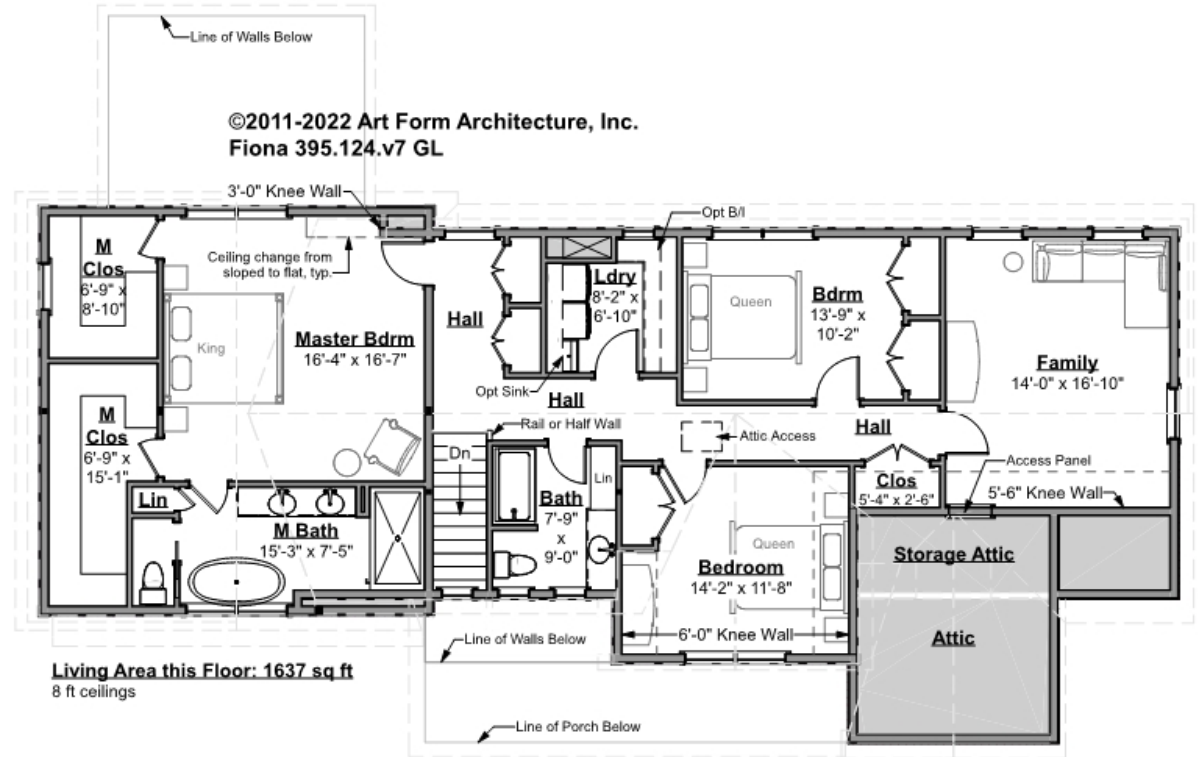
F1 LIVING AREA	1304 FT	F1 BEDROOMS	0	F1 BATHROOMS	0.5
Main	1304.00 FT	Main		Main	0.50
Future	FT	Future		Future	
2 <sup>nd</sup> Unit	FT	2 <sup>nd</sup> Unit		2 <sup>nd</sup> Unit	



# FIONA - 2<sup>ND</sup> FLOOR

395.124.v7 GL

Some features shown are optional. Your Purchase & Sale Agreement governs, whether items are labeled "optional" in this document or not.



CLG HT SHOWN 8'-0"      CLG HT POSSIBLE 9'-0"

\* Major Change Fee, see website plan page for cost

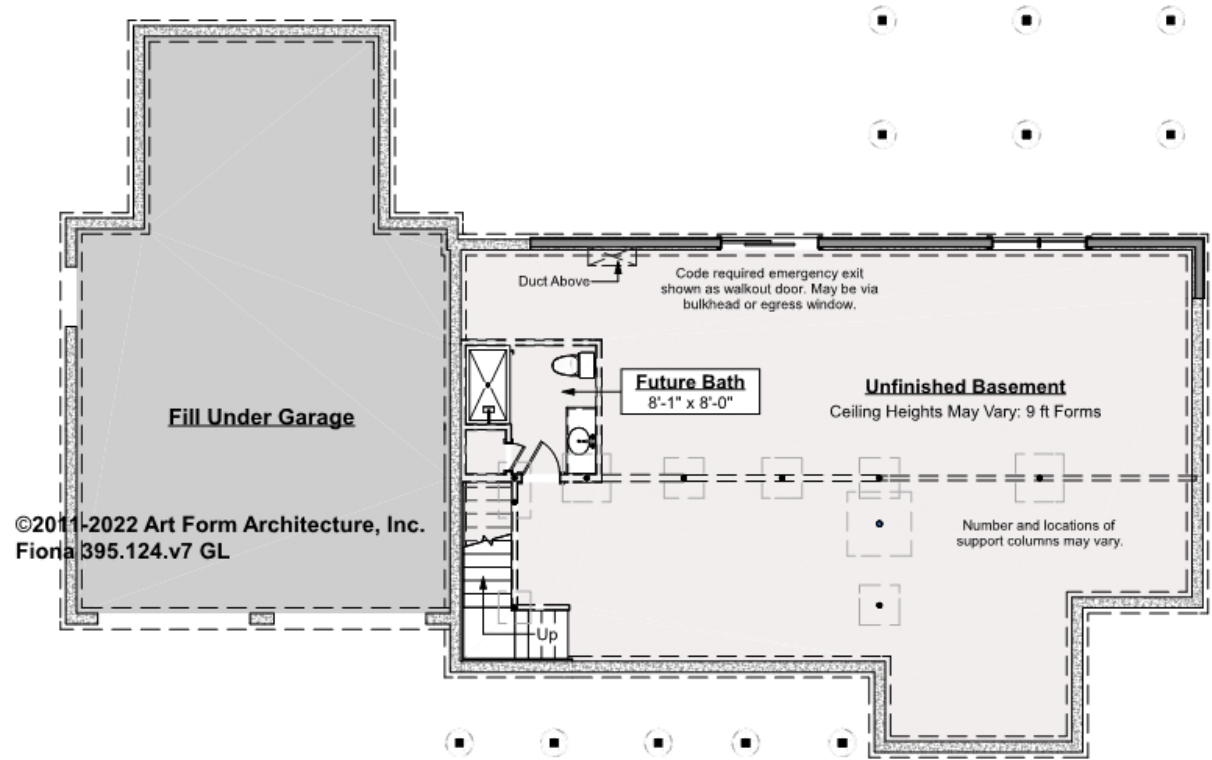
F1 LIVING AREA	1637 FT	F1 BEDROOMS	4	F1 BATHROOMS	2
Main	1637.00 FT	Main	3.00	Main	2.00
Future	FT	Future	1.00	Future	
2 <sup>nd</sup> Unit	FT	2 <sup>nd</sup> Unit		2 <sup>nd</sup> Unit	



# FIONA - BASEMENT

395.124.v7 GL

Some features shown are optional. Your Purchase & Sale Agreement governs, whether items are labeled "optional" in this document or not.



CLG HT SHOWN 9'-0"      CLG HT POSSIBLE 7'-8"

\* Major Change Fee, see website plan page for cost

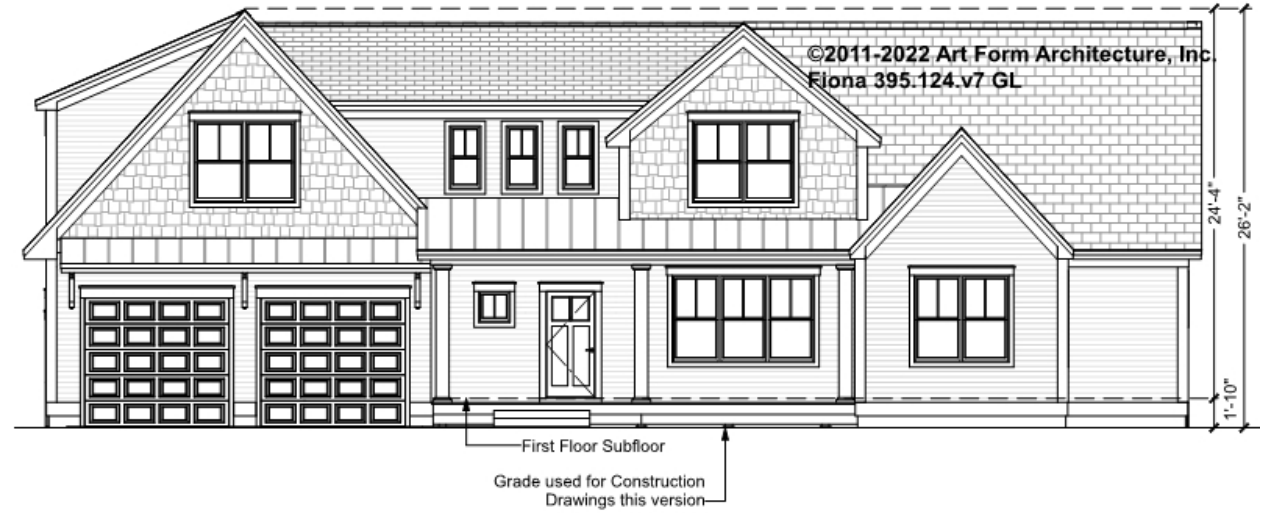
F1 LIVING AREA		F1 BEDROOMS		F1 BATHROOMS	
Main	63 FT	Main	0	Main	1
Future	63.00 FT	Future		Future	1.00
2 <sup>nd</sup> Unit	FT	2 <sup>nd</sup> Unit		2 <sup>nd</sup> Unit	



## FIONA - FRONT ELEVATION

395.124.v7 GL

Some features shown are optional. Your Purchase & Sale Agreement governs, whether items are labeled "optional" in this document or not.





Art Form Architecture, LLC

## FIONA - RIGHT ELEVATION

395.124.v7 GL

Some features shown are optional. Your Purchase & Sale Agreement governs, whether items are labeled "optional" in this document or not.

©2011-2022 Art Form Architecture, Inc.  
Fiona 395.124.v7 GL

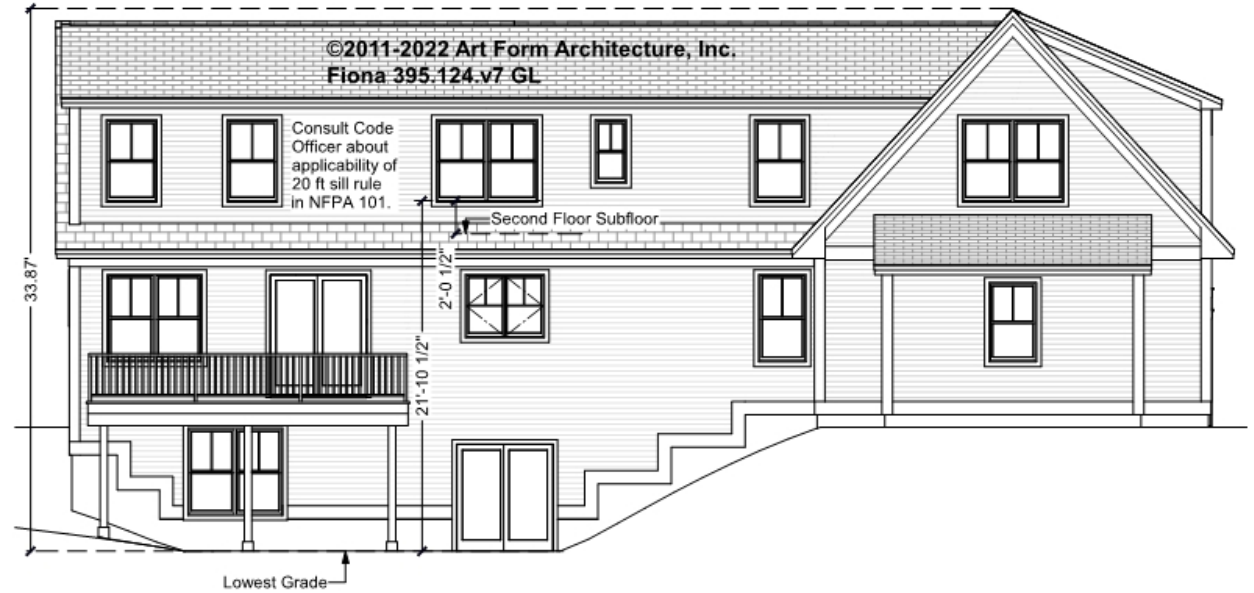




## FIONA - REAR ELEVATION

395.124.v7 GL

Some features shown are optional. Your Purchase & Sale Agreement governs, whether items are labeled "optional" in this document or not.





Art Form Architecture, LLC

## FIONA - LEFT ELEVATION

395.124.v7 GL

Some features shown are optional. Your Purchase & Sale Agreement governs, whether items are labeled "optional" in this document or not.







Art Form Architecture, LLC

## FIONA - REAR RENDER

395.124.v7 GL

Some features shown are optional. Your Purchase & Sale Agreement governs, whether items are labeled "optional" in this document or not.

