



# EMERALD SEA CLASSIC WITH WING, 32X30 320.127.v12 GR

Part of the **Artform Signature - Oversized Collection.**

In addition to our Terms and Conditions (the "Terms"), please be aware of the following:

Art Form Architecture, LLC ("Artform") requires that our Drawings be built substantially as designed. Artform will not be obligated by or liable for use of this design with markups as part of any builder agreement. While we attempt to accommodate where possible and reasonable, and where the changes do not denigrate our design, any and all changes to Drawings must be approved in writing by Artform. It is recommended that you have your Drawing updated by Artform prior to attaching any Drawing to any builder agreement. Artform shall not be responsible for the misuse of or unauthorized alterations to any of its Drawings.



Width 70.00 FT

Depth 36.25 FT

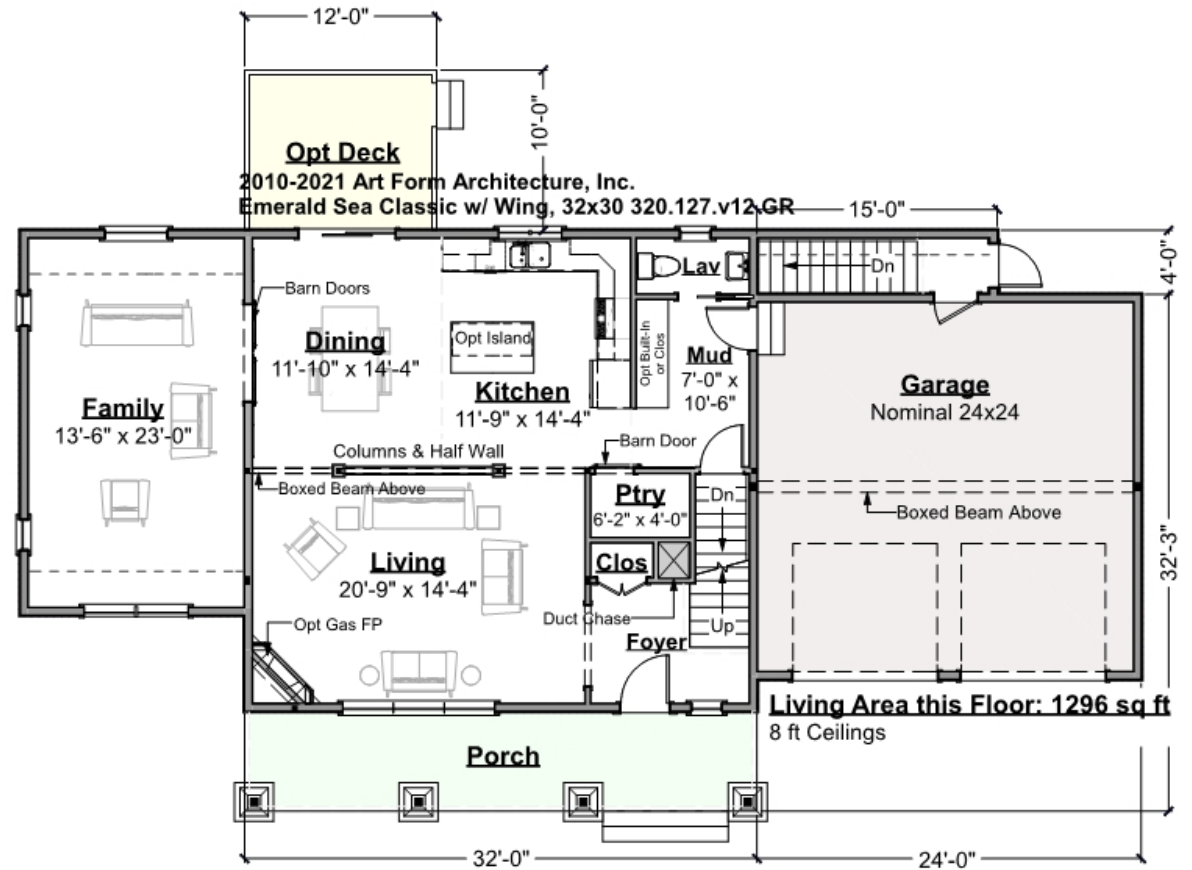
Height 28.00 FT

LIVING AREA		BEDROOMS		BATHROOMS	
	2847 FT		5		2.5
Main	2847 FT	Main	3	Main	2.5
Future	0 FT	Future	2	Future	0
2 <sup>nd</sup> Unit	0 FT	2 <sup>nd</sup> Unit	0	2 <sup>nd</sup> Unit	0



**EMERALD SEA CLASSIC WITH WING,  
32X30 - 1<sup>ST</sup> FLOOR  
320.127.v12 GR**

Some features shown are optional. Your Purchase & Sale Agreement governs, whether items are labeled "optional" in this document or not.



**CLG HT SHOWN 8'-0"    CLG HT POSSIBLE 9'-0"**

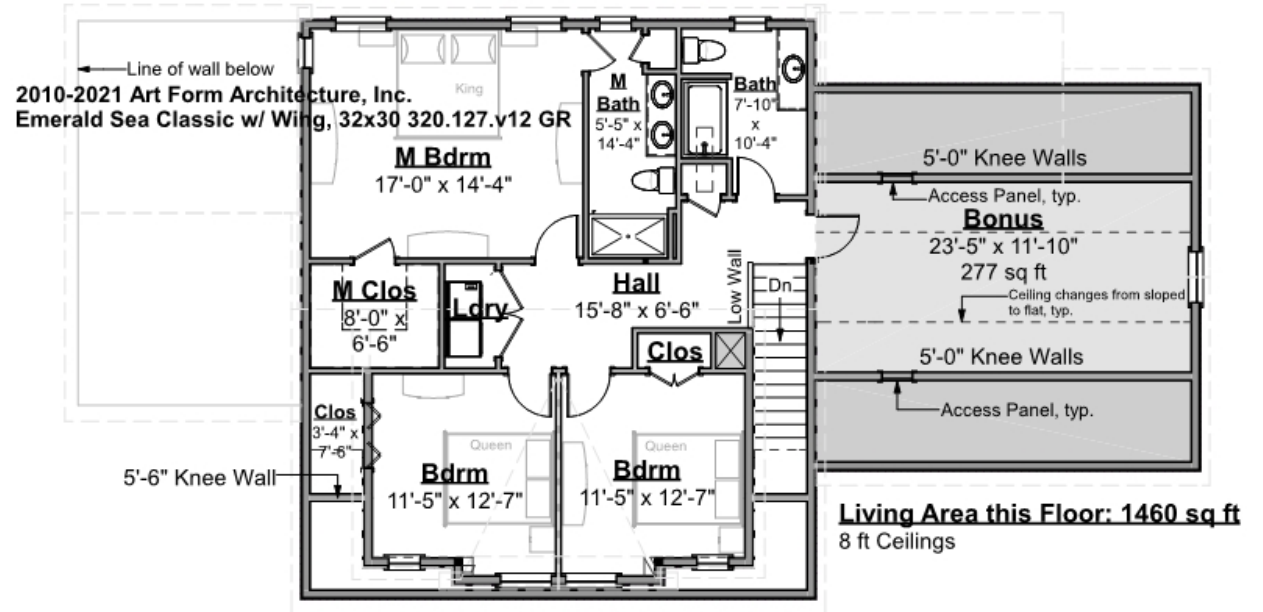
*\* Major Change Fee, see website plan page for cost*

F1 LIVING AREA		F1 BEDROOMS		F1 BATHROOMS	
	1296 <sup>FT</sup>		1		0.5
Main	1296.00 <sup>FT</sup>	Main	0.00	Main	0.50
Future	0.00 <sup>FT</sup>	Future	1.00	Future	0.00
2 <sup>nd</sup> Unit	0.00 <sup>FT</sup>	2 <sup>nd</sup> Unit	0.00	2 <sup>nd</sup> Unit	0.00



**EMERALD SEA CLASSIC WITH WING,  
32X30 - 2<sup>ND</sup> FLOOR  
320.127.v12 GR**

Some features shown are optional. Your Purchase & Sale Agreement governs, whether items are labeled "optional" in this document or not.



CLG HT SHOWN 8'-0"      CLG HT POSSIBLE 9'-0"

\* Major Change Fee, see website plan page for cost

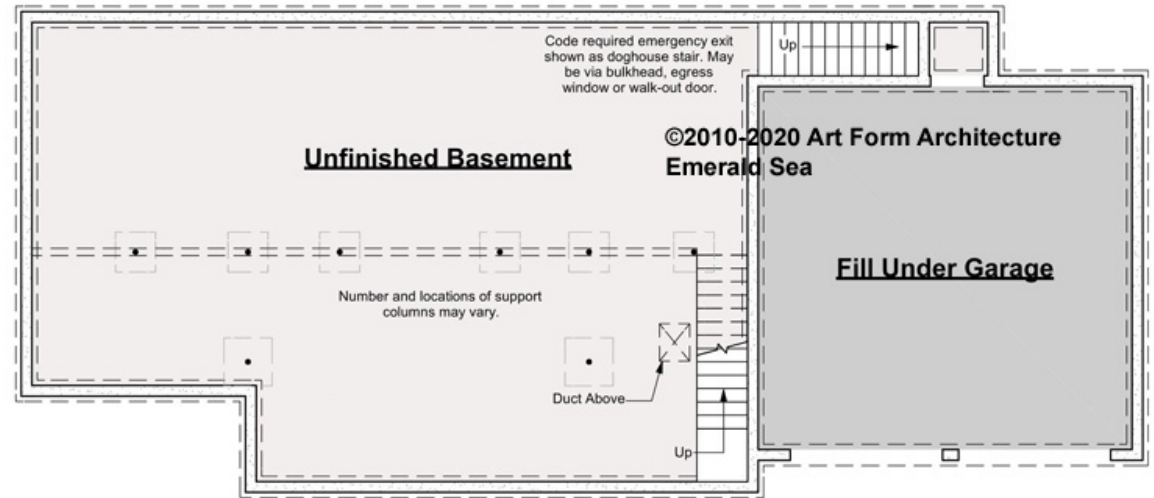
F1 LIVING AREA		F1 BEDROOMS		F1 BATHROOMS	
	1551 <sup>FT</sup>		4		2
Main	1551.00 <sup>FT</sup>	Main	3.00	Main	2.00
Future	0.00 <sup>FT</sup>	Future	1.00	Future	0.00
2 <sup>nd</sup> Unit	0.00 <sup>FT</sup>	2 <sup>nd</sup> Unit	0.00	2 <sup>nd</sup> Unit	0.00



# EMERALD SEA CLASSIC WITH WING, 32X30 - BASEMENT

320.127.v12 GR

Some features shown are optional. Your Purchase & Sale Agreement governs, whether items are labeled "optional" in this document or not.



CRS 320.127.v12 GR Emerald Sea Classic with Wing, 32x30

**CLG HT SHOWN 7'-8"      CLG HT POSSIBLE 9'-0"**

*\* Major Change Fee, see website plan page for cost*

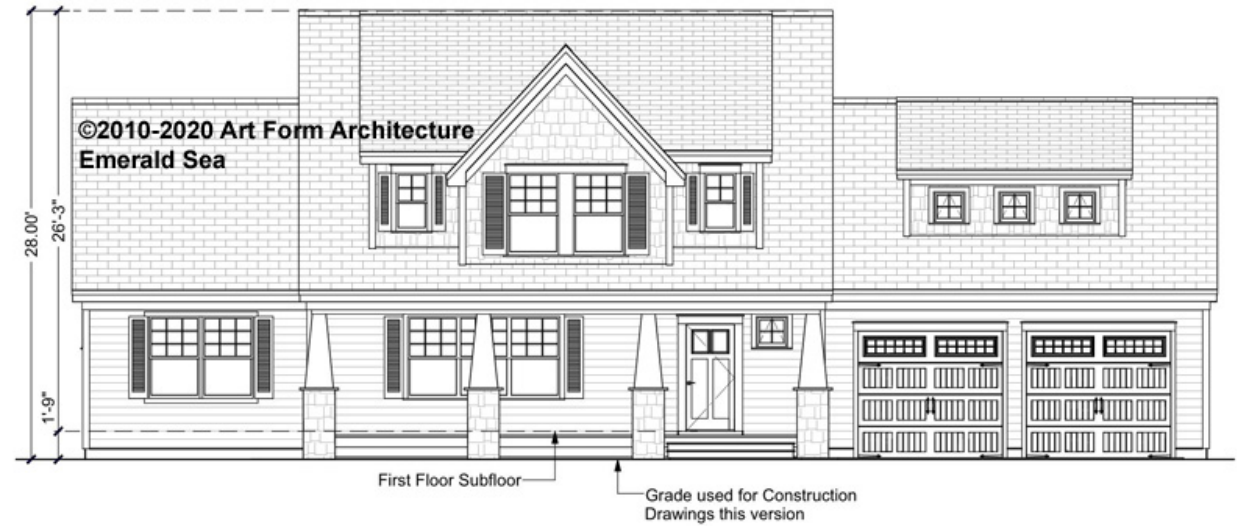
F1 LIVING AREA		F1 BEDROOMS		F1 BATHROOMS	
	0 FT		0		0
Main	0.00 FT	Main	0.00	Main	0.00
Future	0.00 FT	Future	0.00	Future	0.00
2 <sup>nd</sup> Unit	0.00 FT	2 <sup>nd</sup> Unit	0.00	2 <sup>nd</sup> Unit	0.00



Art Form Architecture, LLC

## EMERALD SEA CLASSIC WITH WING, 32X30 - FRONT ELEVATION 320.127.v12 GR

Some features shown are optional. Your Purchase & Sale Agreement governs, whether items are labeled "optional" in this document or not.



CRS 320.127.v12 GR Emerald Sea Classic with Wing, 32x30



Art Form Architecture, LLC

**EMERALD SEA CLASSIC WITH WING,  
32X30 - RIGHT ELEVATION  
320.127.v12 GR**

—  
Some features shown are optional. Your Purchase & Sale Agreement governs, whether items are labeled "optional" in this document or not.



CRS 320.127.v12 GR Emerald Sea Classic with Wing, 32x30



Art Form Architecture, LLC

**EMERALD SEA CLASSIC WITH WING,  
32X30 - REAR ELEVATION  
320.127.v12 GR**

—  
Some features shown are optional. Your Purchase & Sale Agreement governs, whether items are labeled "optional" in this document or not.



CRS 320.127.v12 GR Emerald Sea Classic with Wing, 32x30



Art Form Architecture, LLC

## EMERALD SEA CLASSIC WITH WING, 32X30 - LEFT ELEVATION

320.127.v12 GR

—  
Some features shown are optional. Your Purchase & Sale Agreement governs, whether items are labeled "optional" in this document or not.



CRS 320.127.v12 GR Emerald Sea Classic with Wing, 32x30