



# EMERALD SEA CLASSIC WITH WING 320.127.v13 GR

Part of the **Artform Signature Bungalows Collection**.

In addition to our Terms and Conditions (the "Terms"), please be aware of the following:

Art Form Architecture, LLC ("Artform") requires that our Drawings be built substantially as designed. Artform will not be obligated by or liable for use of this design with markups as part of any builder agreement. While we attempt to accommodate where possible and reasonable, and where the changes do not denigrate our design, any and all changes to Drawings must be approved in writing by Artform. It is recommended that you have your Drawing updated by Artform prior to attaching any Drawing to any builder agreement. Artform shall not be responsible for the misuse of or unauthorized alterations to any of its Drawings.



©2010-2023 Art Form Architecture, LLC  
Emerald Sea Classic with Wing 320.127.v13 GR

**Width 68.00 FT**

**Depth 36.25 FT**

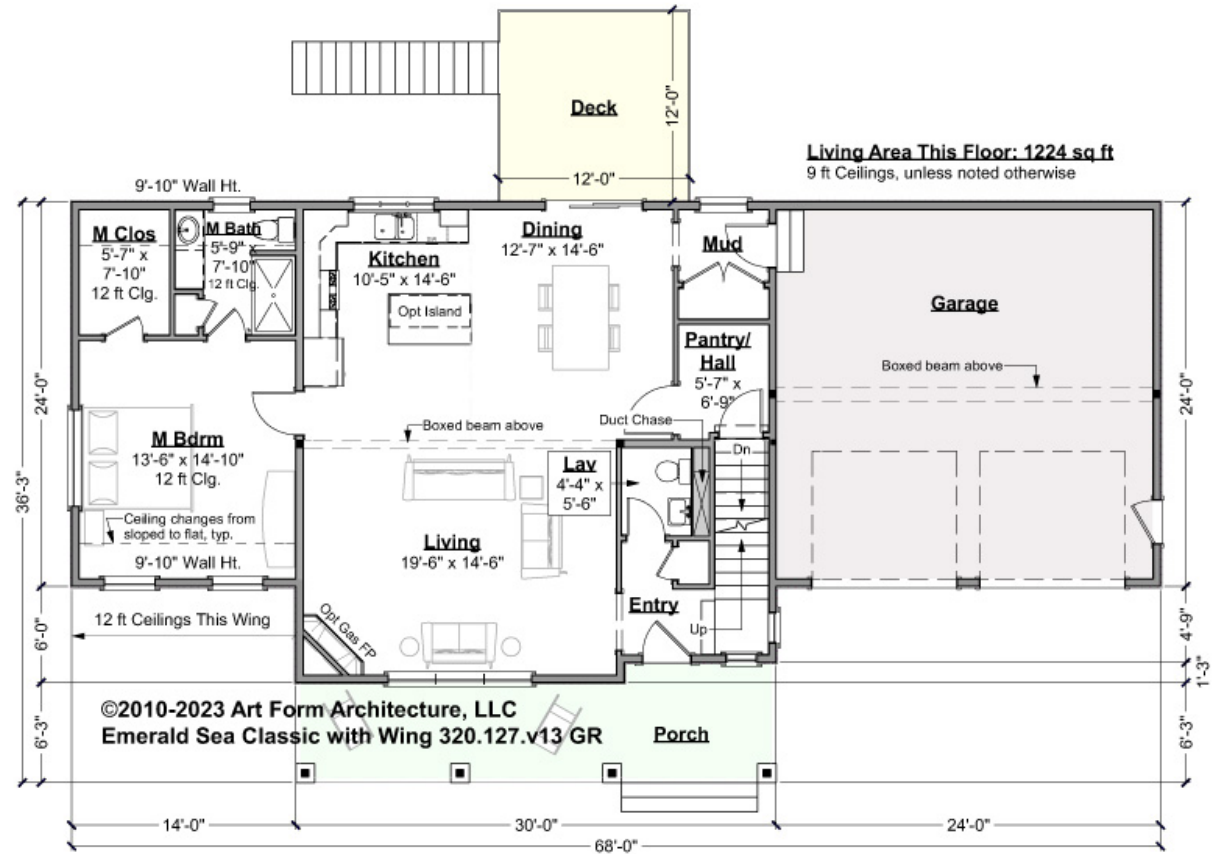
**Height 29.16 FT**

LIVING AREA		BEDROOMS		BATHROOMS	
	2595 FT		5		3.5
Main	2595 FT	Main	4	Main	3.5
Future	0 FT	Future	1	Future	0
2 <sup>nd</sup> Unit	0 FT	2 <sup>nd</sup> Unit	0	2 <sup>nd</sup> Unit	0



**EMERALD SEA CLASSIC WITH WING -  
1<sup>ST</sup> FLOOR  
320.127.v13 GR**

Some features shown are optional. Your Purchase & Sale Agreement governs, whether items are labeled "optional" in this document or not.



**CLG HT SHOWN 9'-0"      CLG HT POSSIBLE 8'-0"**

*\* Major Change Fee, see website plan page for cost*

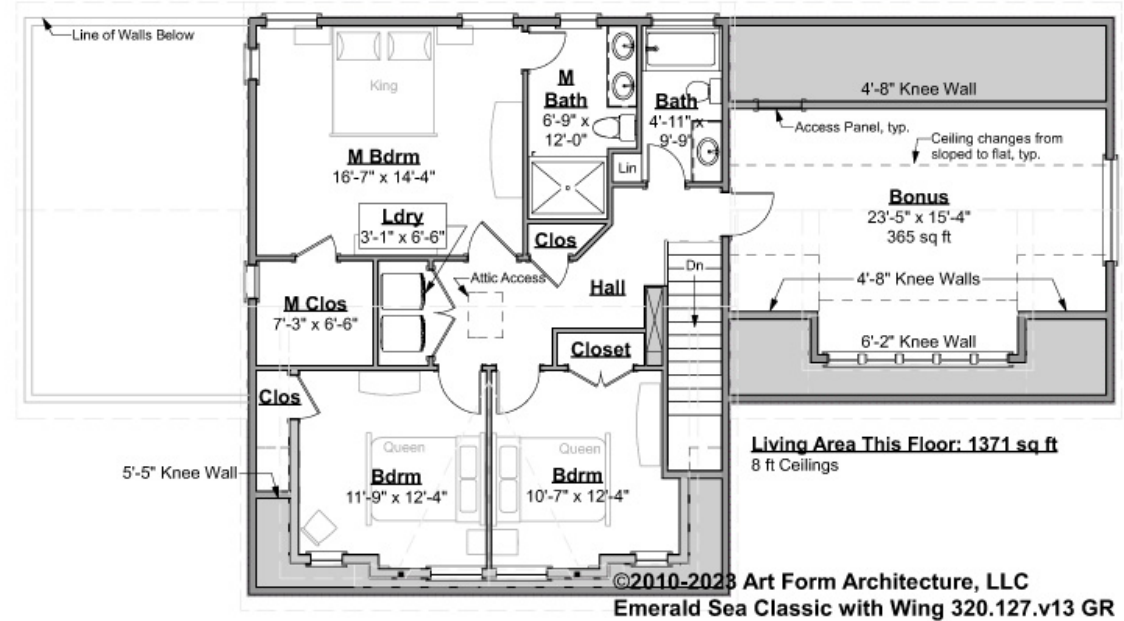
F1 LIVING AREA	1224 <sup>FT</sup>	F1 BEDROOMS	1	F1 BATHROOMS	1.5
Main	1224.00 <sup>FT</sup>	Main	1.00	Main	1.50
Future	0.00 <sup>FT</sup>	Future	0.00	Future	0.00
2 <sup>nd</sup> Unit	0.00 <sup>FT</sup>	2 <sup>nd</sup> Unit	0.00	2 <sup>nd</sup> Unit	0.00



# EMERALD SEA CLASSIC WITH WING - 2<sup>ND</sup> FLOOR

320.127.v13 GR

Some features shown are optional. Your Purchase & Sale Agreement governs, whether items are labeled "optional" in this document or not.



CLG HT SHOWN 8'-0"    CLG HT POSSIBLE 8'-0"

\* Major Change Fee, see website plan page for cost

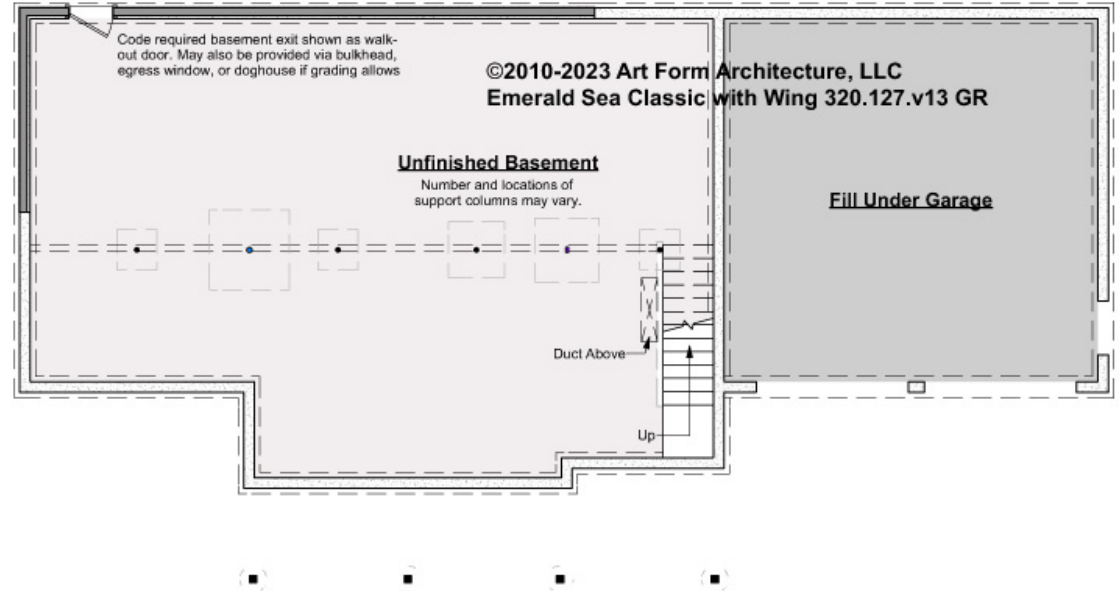
F1 LIVING AREA	1371 <sup>FT</sup>	F1 BEDROOMS	4	F1 BATHROOMS	2
Main	1371.00 <sup>FT</sup>	Main	3.00	Main	2.00
Future	0.00 <sup>FT</sup>	Future	1.00	Future	0.00
2 <sup>nd</sup> Unit	0.00 <sup>FT</sup>	2 <sup>nd</sup> Unit	0.00	2 <sup>nd</sup> Unit	0.00



# EMERALD SEA CLASSIC WITH WING - BASEMENT

320.127.v13 GR

Some features shown are optional. Your Purchase & Sale Agreement governs, whether items are labeled "optional" in this document or not.



CLG HT SHOWN 7'-8"      CLG HT POSSIBLE 9'-0"

\* Major Change Fee, see website plan page for cost

F1 LIVING AREA		F1 BEDROOMS		F1 BATHROOMS	
	0 FT		0		0
Main	0.00 FT	Main	0.00	Main	0.00
Future	0.00 FT	Future	0.00	Future	0.00
2 <sup>nd</sup> Unit	0.00 FT	2 <sup>nd</sup> Unit	0.00	2 <sup>nd</sup> Unit	0.00

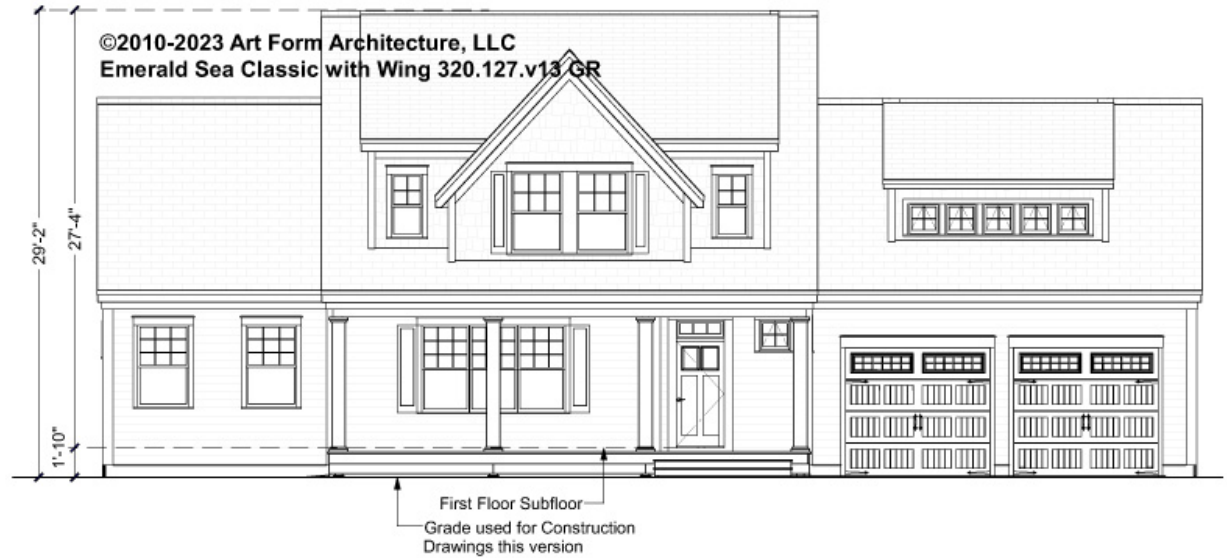


Art Form Architecture, LLC

# EMERALD SEA CLASSIC WITH WING - FRONT ELEVATION

320.127.v13 GR

Some features shown are optional. Your Purchase & Sale Agreement governs, whether items are labeled "optional" in this document or not.





Art Form Architecture, LLC

## EMERALD SEA CLASSIC WITH WING - RIGHT ELEVATION

320.127.v13 GR

—  
Some features shown are optional. Your Purchase & Sale Agreement governs, whether items are labeled "optional" in this document or not.





Art Form Architecture, LLC

## EMERALD SEA CLASSIC WITH WING - REAR ELEVATION

320.127.v13 GR

Some features shown are optional. Your Purchase & Sale Agreement governs, whether items are labeled "optional" in this document or not.





Art Form Architecture, LLC

## EMERALD SEA CLASSIC WITH WING - LEFT ELEVATION

320.127.v13 GR

—  
Some features shown are optional. Your Purchase & Sale Agreement governs, whether items are labeled "optional" in this document or not.



©2010-2023 Art Form Architecture, LLC  
Emerald Sea Classic with Wing 320.127.v13 GR





Art Form Architecture, LLC

## EMERALD SEA CLASSIC WITH WING - REAR RENDER

320.127.v13 GR

—  
Some features shown are optional. Your Purchase & Sale Agreement governs, whether items are labeled "optional" in this document or not.

