



Art Form Architecture, LLC

## COUNTRY FARMHOUSE

016.124.v3 GR

In addition to our Terms and Conditions (the "Terms"), please be aware of the following:

Art Form Architecture, LLC ("Artform") requires that our Drawings be built substantially as designed. Artform will not be obligated by or liable for use of this design with markups as part of any builder agreement. While we attempt to accommodate where possible and reasonable, and where the changes do not denigrate our design, any and all changes to Drawings must be approved in writing by Artform. It is recommended that you have your Drawing updated by Artform prior to attaching any Drawing to any builder agreement. Artform shall not be responsible for the misuse of or unauthorized alterations to any of its Drawings.



Width 61.41 <sup>FT</sup>

Depth 30.00 <sup>FT</sup>

Height 31.08 <sup>FT</sup>

LIVING AREA	2487 <sup>FT</sup>
Main	2487 <sup>FT</sup>
Future	0 <sup>FT</sup>
2 <sup>nd</sup> Unit	0 <sup>FT</sup>

BEDROOMS	4
Main	4
Future	0
2 <sup>nd</sup> Unit	0

BATHROOMS	2.5
Main	2.5
Future	0
2 <sup>nd</sup> Unit	0

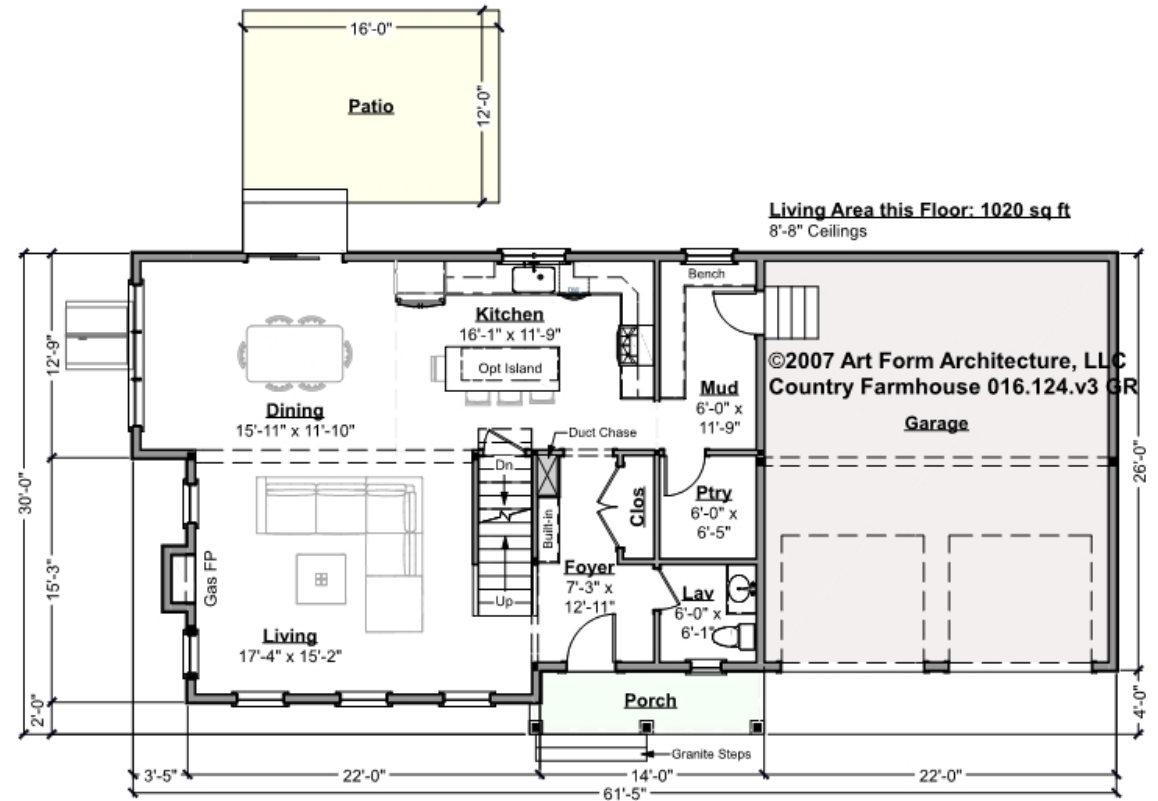


Art Form Architecture, LLC

## COUNTRY FARMHOUSE - 1<sup>ST</sup> FLOOR

### 016.124.v3 GR

Some features shown are optional. Your Purchase & Sale Agreement governs, whether items are labeled "optional" in this document or not.



CLG HT SHOWN 8'-1" - 8'-11"

CLG HT POSSIBLE 8'-1" - 8'-11"

\* Major Change Fee, see website plan page for cost

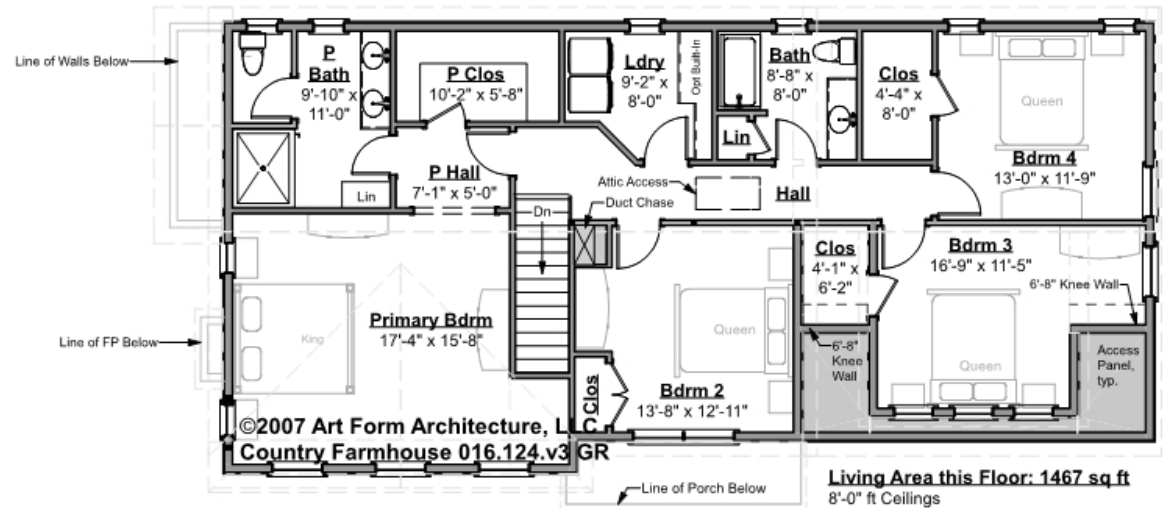
F1 LIVING AREA		1020 FT	F1 BEDROOMS		0	F1 BATHROOMS		0.5
Main		1020.00 FT	Main			Main		0.50
Future		FT	Future			Future		
2 <sup>nd</sup> Unit		FT	2 <sup>nd</sup> Unit			2 <sup>nd</sup> Unit		



## COUNTRY FARMHOUSE - 2<sup>ND</sup> FLOOR

### 016.124.v3 GR

Some features shown are optional. Your Purchase & Sale Agreement governs, whether items are labeled "optional" in this document or not.



CLG HT SHOWN 8'-0"

CLG HT POSSIBLE 9'-0"

\* Major Change Fee, see website plan page for cost

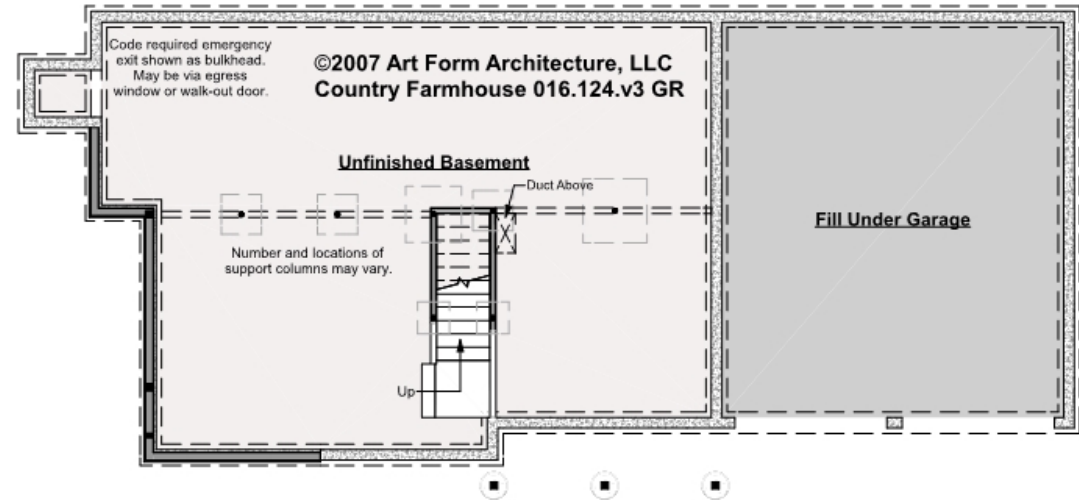
F1 LIVING AREA	1467 FT	F1 BEDROOMS	4	F1 BATHROOMS	2
Main	1467.00 FT	Main	4.00	Main	2.00
Future	FT	Future		Future	
2 <sup>nd</sup> Unit	FT	2 <sup>nd</sup> Unit		2 <sup>nd</sup> Unit	



## COUNTRY FARMHOUSE - BASEMENT

### 016.124.v3 GR

Some features shown are optional. Your Purchase & Sale Agreement governs, whether items are labeled "optional" in this document or not.



CLG HT SHOWN 7'-8"

CLG HT POSSIBLE 10' & Up

\* Major Change Fee, see website plan page for cost

F1 LIVING AREA		0 FT	F1 BEDROOMS		0	F1 BATHROOMS		0
Main		FT	Main			Main		
Future		FT	Future			Future		
2 <sup>nd</sup> Unit		FT	2 <sup>nd</sup> Unit			2 <sup>nd</sup> Unit		



Art Form Architecture, LLC

## COUNTRY FARMHOUSE - FRONT ELEVATION

016.124.v3 GR

Some features shown are optional. Your Purchase & Sale Agreement governs, whether items are labeled "optional" in this document or not.





Art Form Architecture, LLC

## COUNTRY FARMHOUSE - RIGHT ELEVATION

016.124.v3 GR

—  
Some features shown are optional. Your Purchase & Sale Agreement governs, whether items are labeled "optional" in this document or not.





Art Form Architecture, LLC

## COUNTRY FARMHOUSE - REAR ELEVATION

016.124.v3 GR

—  
Some features shown are optional. Your Purchase & Sale Agreement governs, whether items are labeled "optional" in this document or not.





Art Form Architecture, LLC

## COUNTRY FARMHOUSE - LEFT ELEVATION

016.124.v3 GR

—  
Some features shown are optional. Your Purchase & Sale Agreement governs, whether items are labeled "optional" in this document or not.







Art Form Architecture, LLC

## COUNTRY FARMHOUSE - REAR RENDER

016.124.v3 GR

—  
Some features shown are optional. Your Purchase & Sale Agreement governs, whether items are labeled "optional" in this document or not.

