



COCONUT

1146.124.v2 GL

Coconut is named after one of Wendy's cats, who was a very bad girl. She was loved, but she was a "problem child". She once got a full cooked chicken off the upper shelf of an upper kitchen cabinet, door closed - in the 5 minutes it took Wendy to hit the loo.

As shown it has extra thick walls - 3" exterior rigid insulation.

Remember that Tier 4 are priced as Fully Custom. So - if you make changes, as long as they don't increase size or complexity enough to jump to H3 or more - no change fees.

In addition to our Terms and Conditions (the "Terms"), please be aware of the following:

Art Form Architecture, LLC ("Artform") requires that our Drawings be built substantially as designed. Artform will not be obligated by or liable for use of this design with markups as part of any builder agreement. While we attempt to accommodate where possible and reasonable, and where the changes do not denigrate our design, any and all changes to Drawings must be approved in writing by Artform. It is recommended that you have your Drawing updated by Artform prior to attaching any Drawing to any builder agreement. Artform shall not be responsible for the misuse of or unauthorized alterations to any of its Drawings.



Width 63.50 FT

Depth 38.50 FT

Height 24.50 FT

LIVING AREA		BEDROOMS		BATHROOMS	
	1243 FT		4		2
Main	1243 FT	Main	4	Main	2
Future	0 FT	Future	0	Future	0
2 nd Unit	0 FT	2 nd Unit	0	2 nd Unit	0



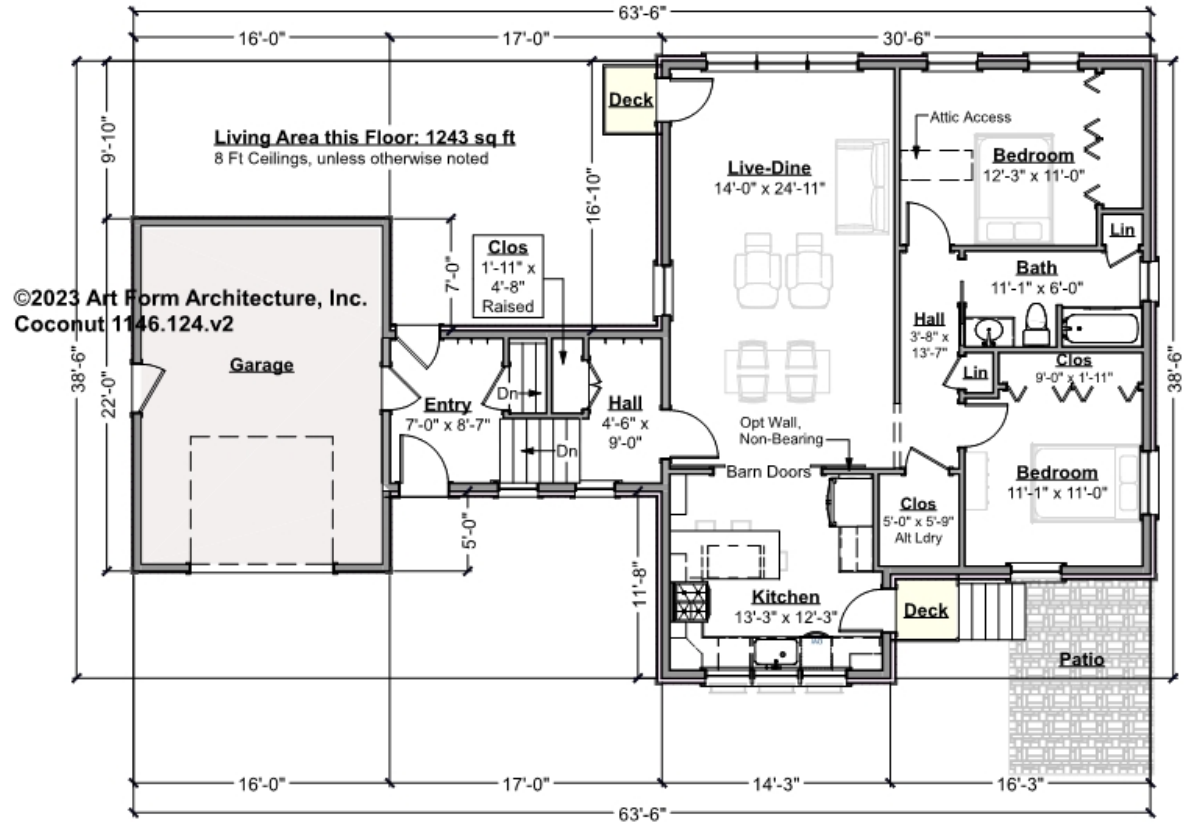
COCONUT - 1ST FLOOR

1146.124.v2 GL

Want a more formal front entry? That "closet" can become a foyer, add a porch in place of that deck. The stairs are extra wide, to allow for a future Stair Chair.

This house is designed for a lot facing east. East sun in the kitchen, western sunsets.

Some features shown are optional. Your Purchase & Sale Agreement governs, whether items are labeled "optional" in this document or not.



CLG HT SHOWN 8'-0" CLG HT POSSIBLE 9'-0"

* Major Change Fee, see website plan page for cost

F1 LIVING AREA	1243 FT	F1 BEDROOMS	2	F1 BATHROOMS	1
Main	1243.00 FT	Main	2.00	Main	1.00
Future	FT	Future		Future	
2 nd Unit	FT	2 nd Unit		2 nd Unit	



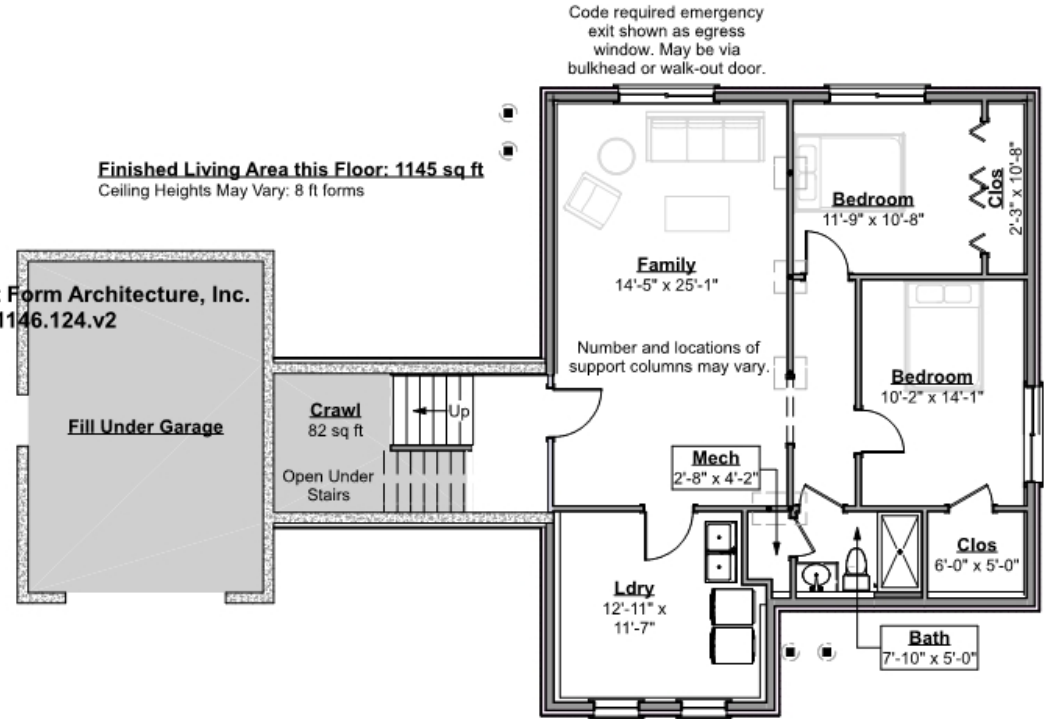
COCONUT - BASEMENT

1146.124.v2 GL

Note: finished basement area is NOT included in main or future Living Area, but IS shown on CDs. We do this so Search doesn't mislead.

Some features shown are optional. Your Purchase & Sale Agreement governs, whether items are labeled "optional" in this document or not.

©2023 Art Form Architecture, Inc.
Coconut 1146.124.v2



CLG HT SHOWN 7'-8" CLG HT POSSIBLE 7'-8"

* Major Change Fee, see website plan page for cost

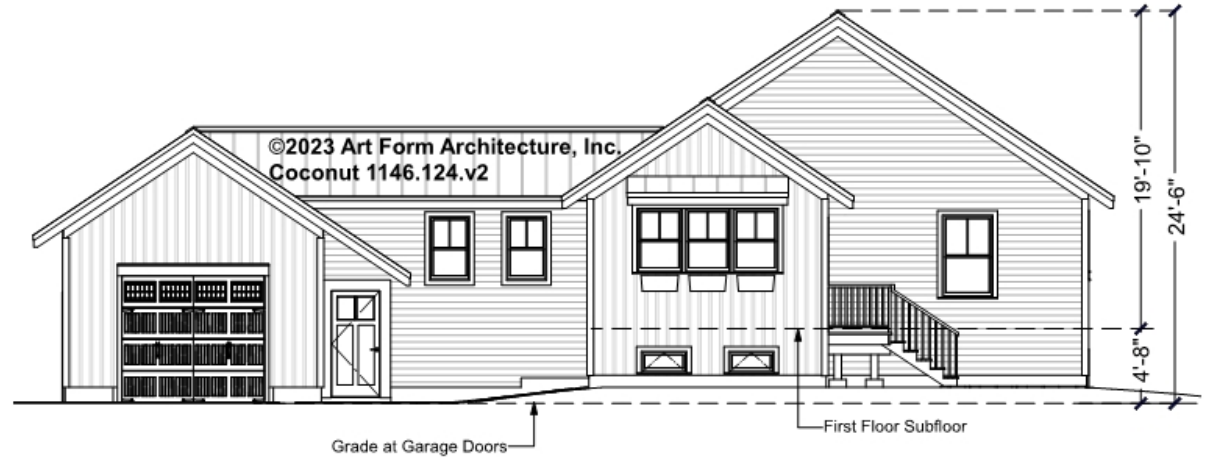
F1 LIVING AREA		F1 BEDROOMS		F1 BATHROOMS	
0	FT	2		1	
Main	0.00	Main	2.00	Main	1.00
Future	FT	Future		Future	
2 nd Unit	FT	2 nd Unit		2 nd Unit	



COCONUT - FRONT ELEVATION

1146.124.v2 GL

Some features shown are optional. Your Purchase & Sale Agreement governs, whether items are labeled "optional" in this document or not.



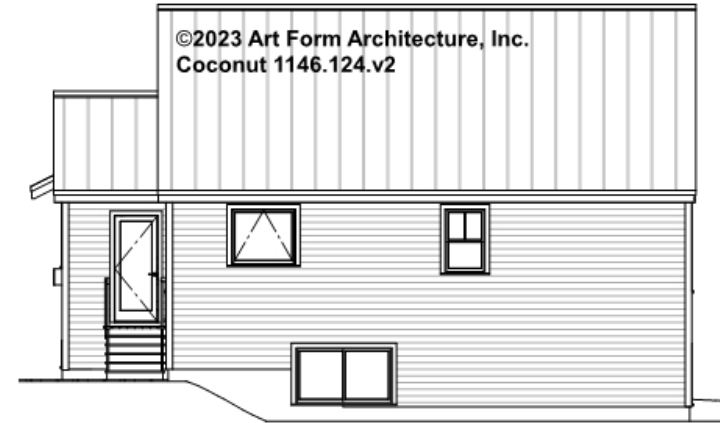


Art Form Architecture, LLC

COCONUT - RIGHT ELEVATION

1146.124.v2 GL

Some features shown are optional. Your Purchase & Sale Agreement governs, whether items are labeled "optional" in this document or not.

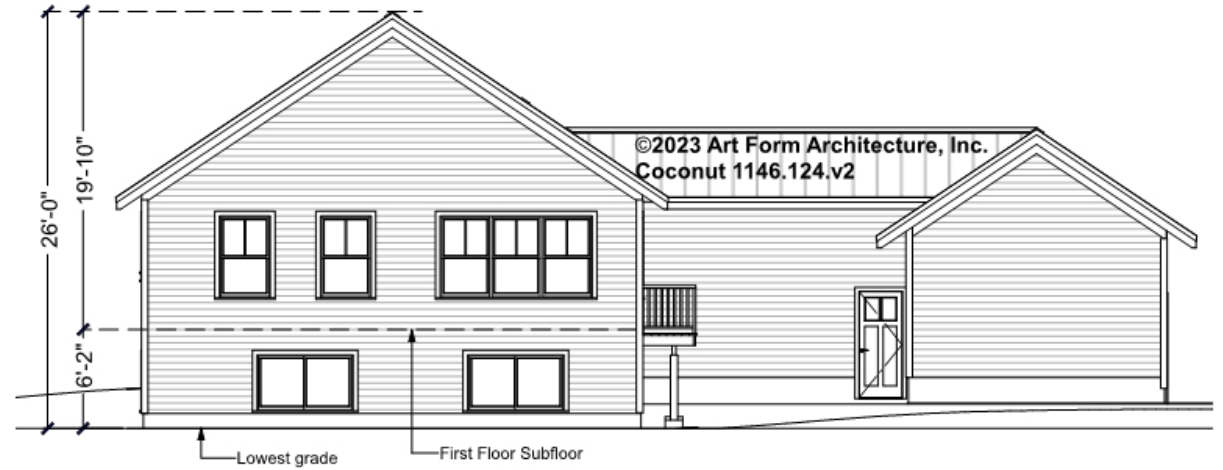




COCONUT - REAR ELEVATION

1146.124.v2 GL

Some features shown are optional. Your Purchase & Sale Agreement governs, whether items are labeled "optional" in this document or not.



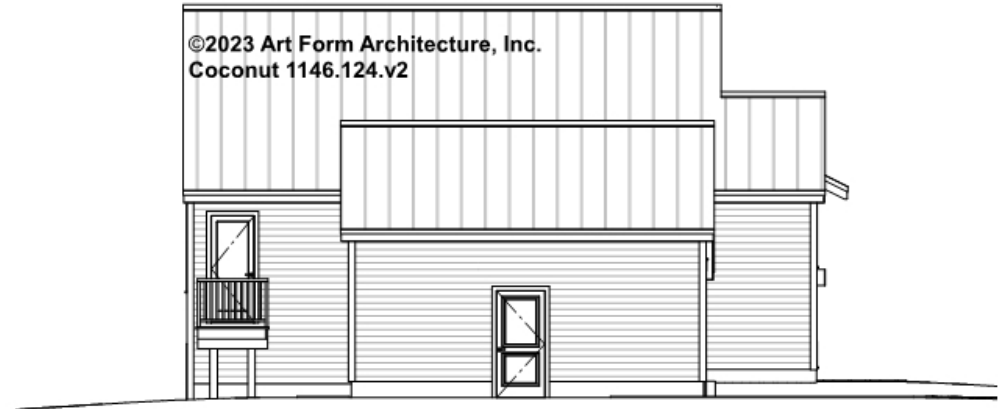


Art Form Architecture, LLC

COCONUT - LEFT ELEVATION

1146.124.v2 GL

Some features shown are optional. Your Purchase & Sale Agreement governs, whether items are labeled "optional" in this document or not.





Art Form Architecture, LLC

COCONUT - REAR RENDER

1146.124.v2 GL

Some features shown are optional. Your Purchase & Sale Agreement governs, whether items are labeled "optional" in this document or not.

