



Art Form Architecture, LLC

## CARBONARA DELUX

### 1027.130 GL

Part of the **Savory Cottages Collection**.

Reverse plan available.

—

In addition to our Terms and Conditions (the "Terms"), please be aware of the following:

Art Form Architecture, LLC ("Artform") requires that our Drawings be built substantially as designed. Artform will not be obligated by or liable for use of this design with markups as part of any builder agreement. While we attempt to accommodate where possible and reasonable, and where the changes do not denigrate our design, any and all changes to Drawings must be approved in writing by Artform. It is recommended that you have your Drawing updated by Artform prior to attaching any Drawing to any builder agreement. Artform shall not be responsible for the misuse of or unauthorized alterations to any of its Drawings.



Width 73.00 <sup>FT</sup>

Depth 47.00 <sup>FT</sup>

Height 26.16 <sup>FT</sup>

LIVING AREA		3182 <sup>FT</sup>	BEDROOMS		5	BATHROOMS		2.5
Main		2507 <sup>FT</sup>	Main		4	Main		2.5
Future		675 <sup>FT</sup>	Future		1	Future		0
2 <sup>nd</sup> Unit		0 <sup>FT</sup>	2 <sup>nd</sup> Unit		0	2 <sup>nd</sup> Unit		0

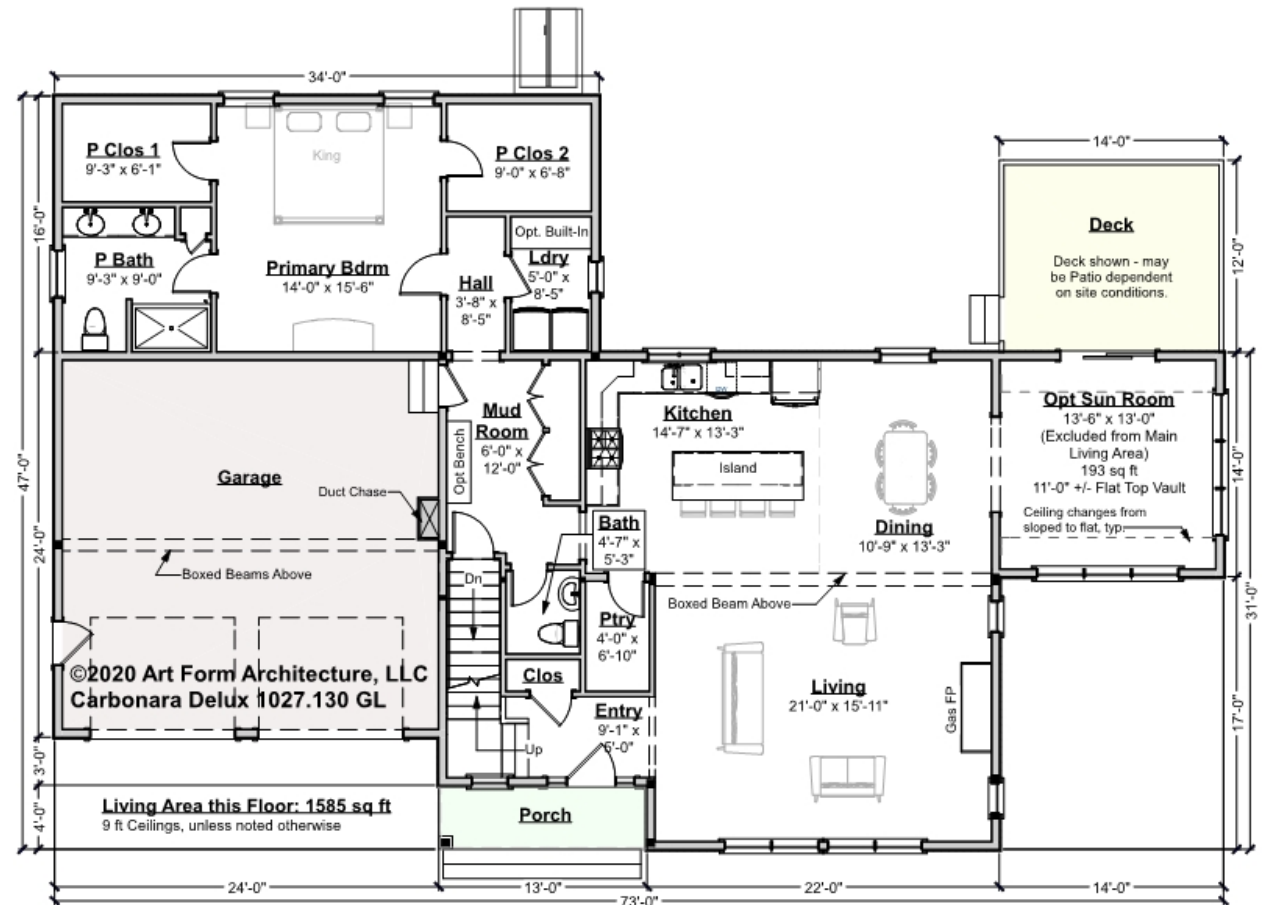


## CARBONARA DELUX - 1<sup>ST</sup> FLOOR

### 1027.130 GL

Sun Room SF is listed as optional and not included in Main Living Area, Art Form can update the plan to show this SF included at no additional charge if needed.

Some features shown are optional. Your Purchase & Sale Agreement governs, whether items are labeled "optional" in this document or not.



CLG HT SHOWN 9'-0"

CLG HT POSSIBLE 8'-0"

\* Major Change Fee, see website plan page for cost

F1 LIVING AREA		1778 <sup>FT</sup>	F1 BEDROOMS		1	F1 BATHROOMS		1.5
Main		1585.00 <sup>FT</sup>	Main		1.00	Main		1.50
Future		193.00 <sup>FT</sup>	Future			Future		
2 <sup>nd</sup> Unit		FT	2 <sup>nd</sup> Unit			2 <sup>nd</sup> Unit		

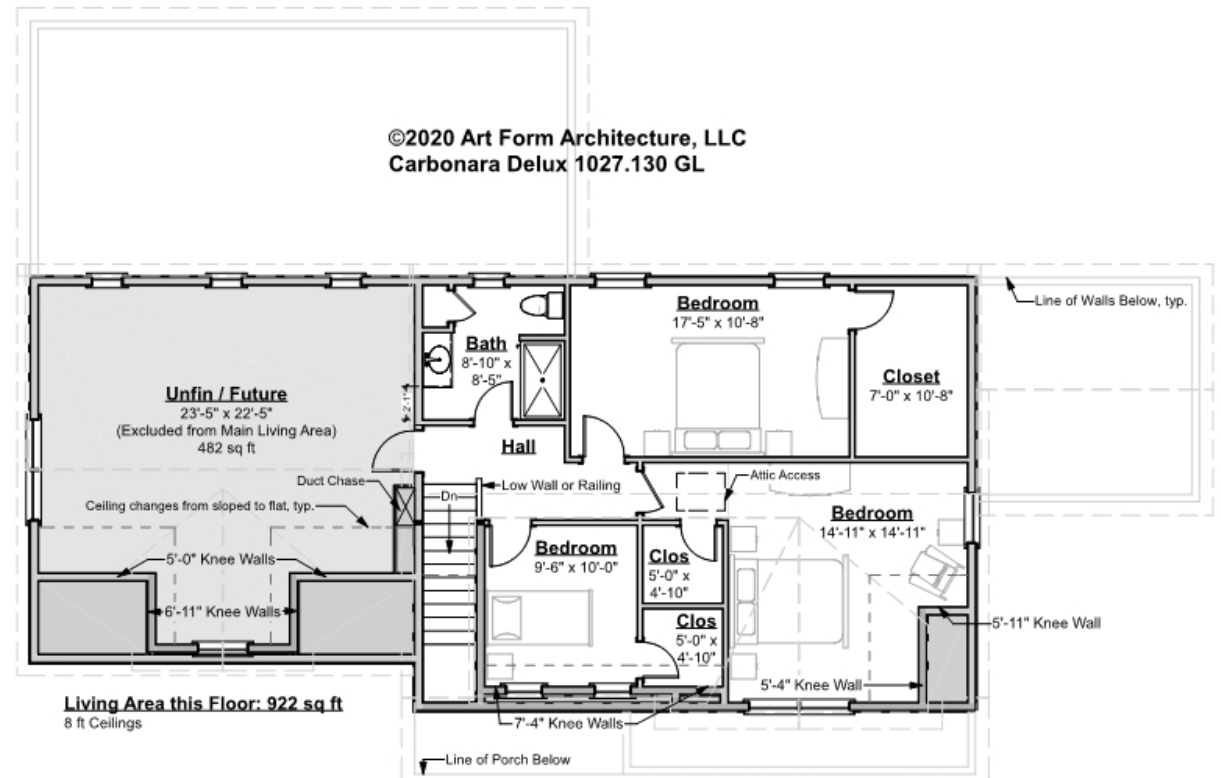


Art Form Architecture, LLC

## CARBONARA DELUX - 2<sup>ND</sup> FLOOR

### 1027.130 GL

Some features shown are optional. Your Purchase & Sale Agreement governs, whether items are labeled "optional" in this document or not.



CLG HT SHOWN 8'-0"

CLG HT POSSIBLE 9'-0"

\* Major Change Fee, see website plan page for cost

F1 LIVING AREA		1404 <sup>FT</sup>	F1 BEDROOMS		4	F1 BATHROOMS		1
Main		922.00 <sup>FT</sup>	Main		3.00	Main		1.00
Future		482.00 <sup>FT</sup>	Future		1.00	Future		
2 <sup>nd</sup> Unit		<sup>FT</sup>	2 <sup>nd</sup> Unit			2 <sup>nd</sup> Unit		

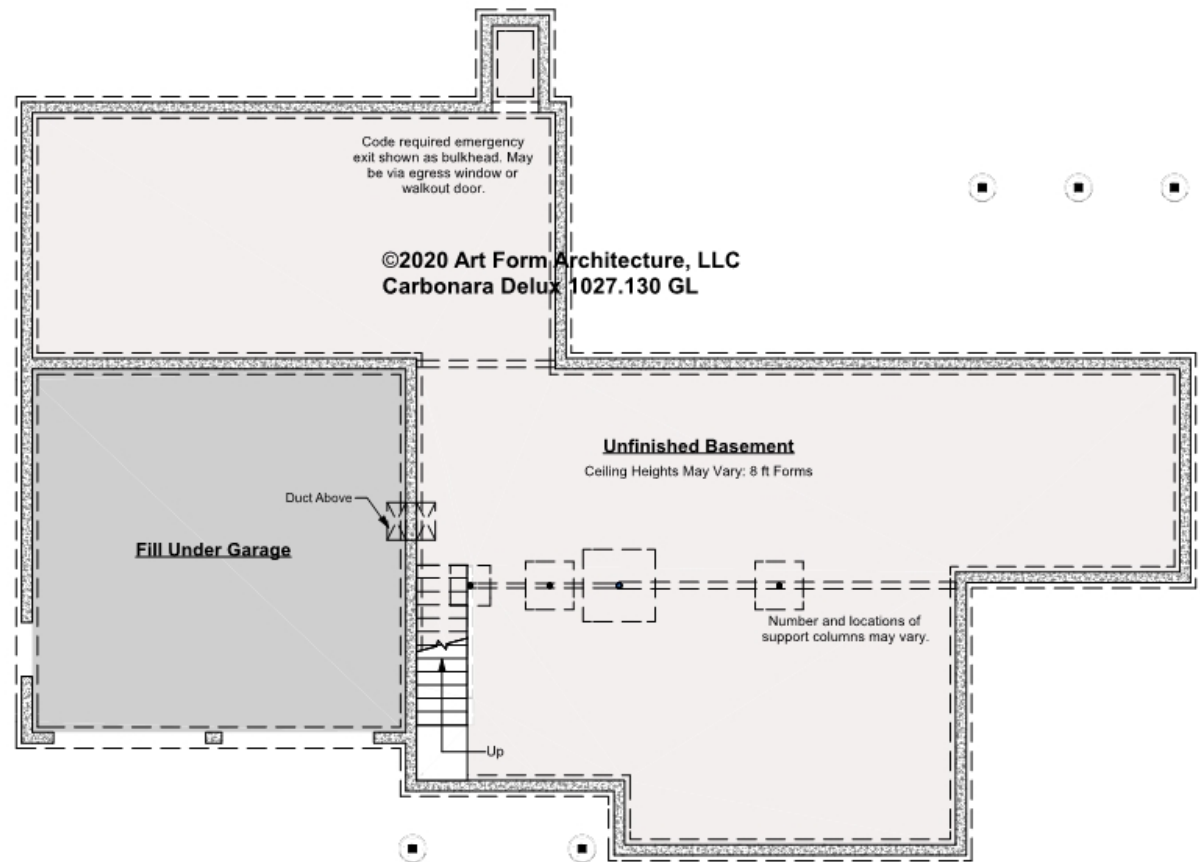


Art Form Architecture, LLC

## CARBONARA DELUX - BASEMENT

### 1027.130 GL

Some features shown are optional. Your Purchase & Sale Agreement governs, whether items are labeled "optional" in this document or not.



CLG HT SHOWN 7'-8"

CLG HT POSSIBLE 10' & Up

\* Major Change Fee, see website plan page for cost

F1 LIVING AREA		0 FT	F1 BEDROOMS		0	F1 BATHROOMS		0
Main		FT	Main			Main		
Future		FT	Future			Future		
2 <sup>nd</sup> Unit		FT	2 <sup>nd</sup> Unit			2 <sup>nd</sup> Unit		



Art Form Architecture, LLC

## CARBONARA DELUX - FRONT ELEVATION

1027.130 GL

Some features shown are optional. Your Purchase & Sale Agreement governs, whether items are labeled "optional" in this document or not.





Art Form Architecture, LLC

## CARBONARA DELUX - RIGHT ELEVATION

1027.130 GL

—  
Some features shown are optional. Your Purchase & Sale Agreement governs, whether items are labeled "optional" in this document or not.



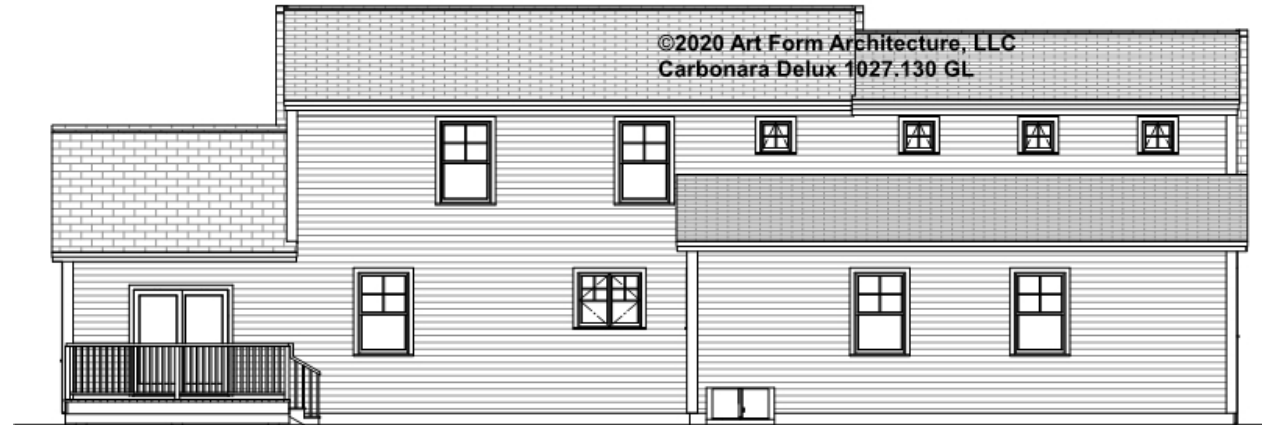


Art Form Architecture, LLC

## CARBONARA DELUX - REAR ELEVATION

1027.130 GL

Some features shown are optional. Your Purchase & Sale Agreement governs, whether items are labeled "optional" in this document or not.





Art Form Architecture, LLC

## CARBONARA DELUX - LEFT ELEVATION

1027.130 GL

—  
Some features shown are optional. Your Purchase & Sale Agreement governs, whether items are labeled "optional" in this document or not.





Art Form Architecture, LLC

## CARBONARA DELUX - REAR RENDER 1027.130 GL

Some features shown are optional. Your Purchase & Sale Agreement governs, whether items are labeled "optional" in this document or not.

