



Art Form Architecture, LLC

BUTTERSCOTCH

430.120.v8 GL

In addition to our Terms and Conditions (the "Terms"), please be aware of the following:

Art Form Architecture, LLC ("Artform") requires that our Drawings be built substantially as designed. Artform will not be obligated by or liable for use of this design with markups as part of any builder agreement. While we attempt to accommodate where possible and reasonable, and where the changes do not denigrate our design, any and all changes to Drawings must be approved in writing by Artform. It is recommended that you have your Drawing updated by Artform prior to attaching any Drawing to any builder agreement. Artform shall not be responsible for the misuse of or unauthorized alterations to any of its Drawings.



Width 34.00 ^{FT}

Depth 30.25 ^{FT}

Height 31.00 ^{FT}

LIVING AREA		BEDROOMS		BATHROOMS	
	1768 ^{FT}		4		2.5
Main	1768 ^{FT}	Main	3	Main	2.5
Future	0 ^{FT}	Future	1	Future	0
2 nd Unit	0 ^{FT}	2 nd Unit	0	2 nd Unit	0

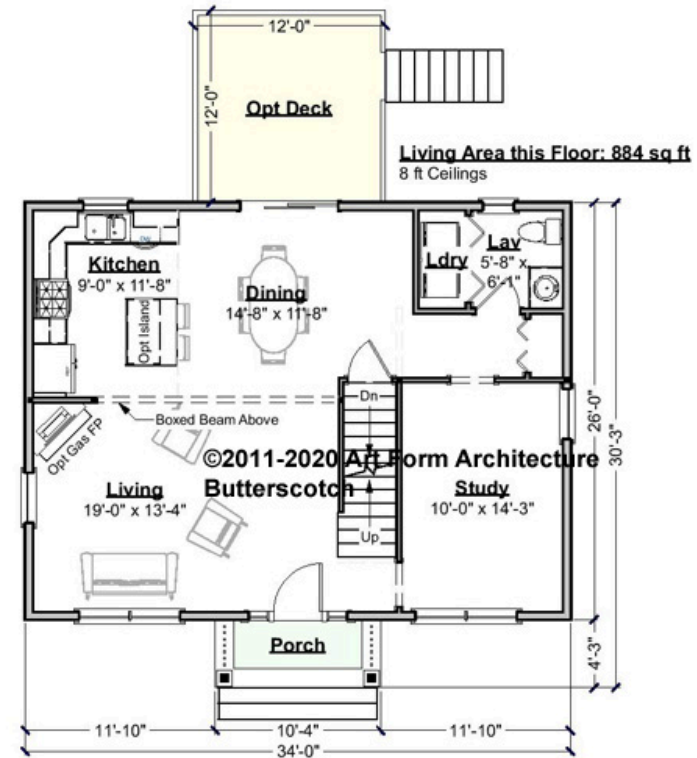


BUTTERSCOTCH - 1ST FLOOR

430.120.v8 GL

Study is counted as a potential/future bedroom.

Some features shown are optional. Your Purchase & Sale Agreement governs, whether items are labeled "optional" in this document or not.



CRS 430.120.v8 GL Butterscotch

CLG HT SHOWN 8'-0"

CLG HT POSSIBLE 8'-0"

* Major Change Fee, see website plan page for cost

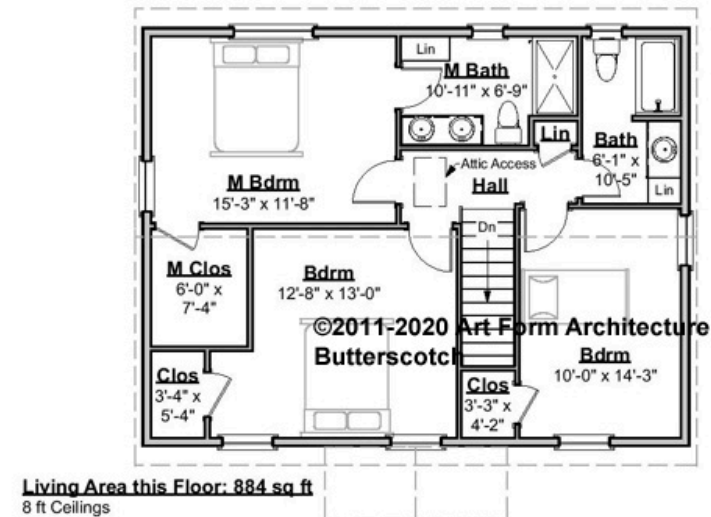
F1 LIVING AREA		884 ^{FT}	F1 BEDROOMS		1	F1 BATHROOMS		0.5
Main		884.00 ^{FT}	Main		0.00	Main		0.50
Future		0.00 ^{FT}	Future		1.00	Future		0.00
2 nd Unit		0.00 ^{FT}	2 nd Unit		0.00	2 nd Unit		0.00



BUTTERSCOTCH - 2ND FLOOR

430.120.v8 GL

Some features shown are optional. Your Purchase & Sale Agreement governs, whether items are labeled "optional" in this document or not.



CRS 430.120.v8 GL Butterscotch

CLG HT SHOWN 8'-0"

CLG HT POSSIBLE 8'-0"

* Major Change Fee, see website plan page for cost

F1 LIVING AREA		884 ^{FT}	F1 BEDROOMS		3	F1 BATHROOMS		2
Main		884.00 ^{FT}	Main		3.00	Main		2.00
Future		0.00 ^{FT}	Future		0.00	Future		0.00
2 nd Unit		0.00 ^{FT}	2 nd Unit		0.00	2 nd Unit		0.00

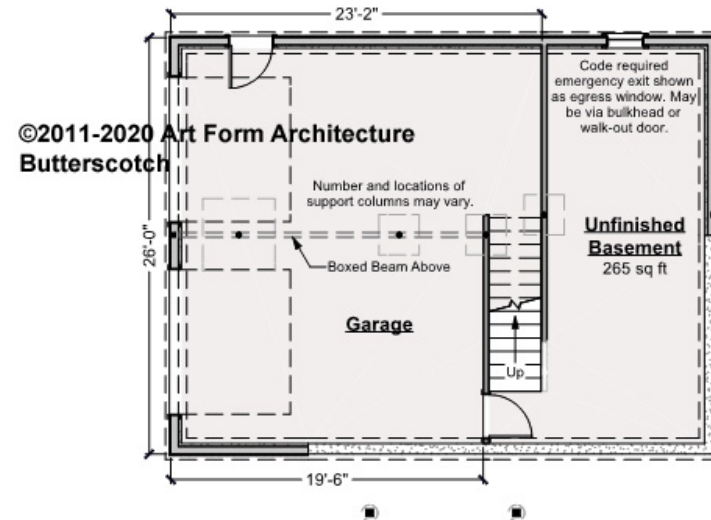


BUTTERSCOTCH - BASEMENT

430.120.v8 GL

Increasing basement height would require moving the door from the garage and adding a landing and stair treads. But be careful - Master Bedroom window will then exceed 20 ft from grade at the sill. Consult code officer about applicability of NFPA 101 20 ft sill rule.

Some features shown are optional. Your Purchase & Sale Agreement governs, whether items are labeled "optional" in this document or not.



CRS 430.120.v8 GL Butterscotch

CLG HT SHOWN 7'-8"

CLG HT POSSIBLE 9'-0"

* Major Change Fee, see website plan page for cost

F1 LIVING AREA		0 ^{FT}	F1 BEDROOMS		0	F1 BATHROOMS		0
Main		0.00 ^{FT}	Main		0.00	Main		0.00
Future		0.00 ^{FT}	Future		0.00	Future		0.00
2 nd Unit		0.00 ^{FT}	2 nd Unit		0.00	2 nd Unit		0.00

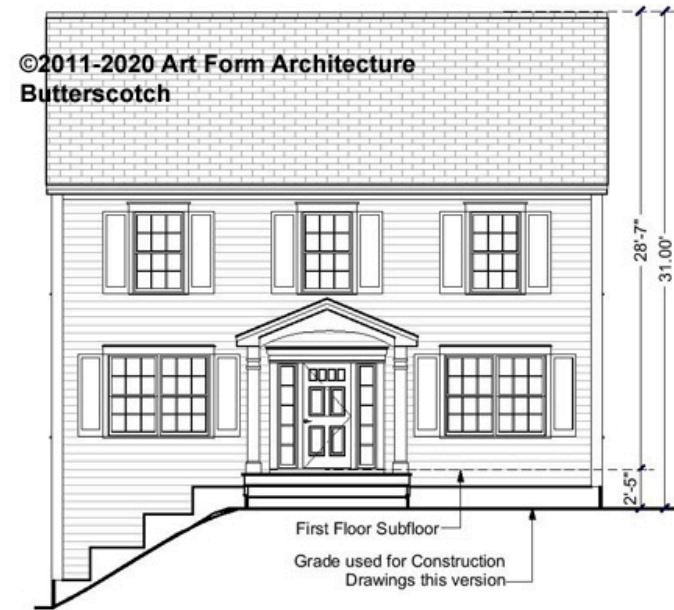


Art Form Architecture, LLC

BUTTERSCOTCH - FRONT ELEVATION

430.120.v8 GL

Some features shown are optional. Your Purchase & Sale Agreement governs, whether items are labeled "optional" in this document or not.



CRS 430.120.v8 GL Butterscotch

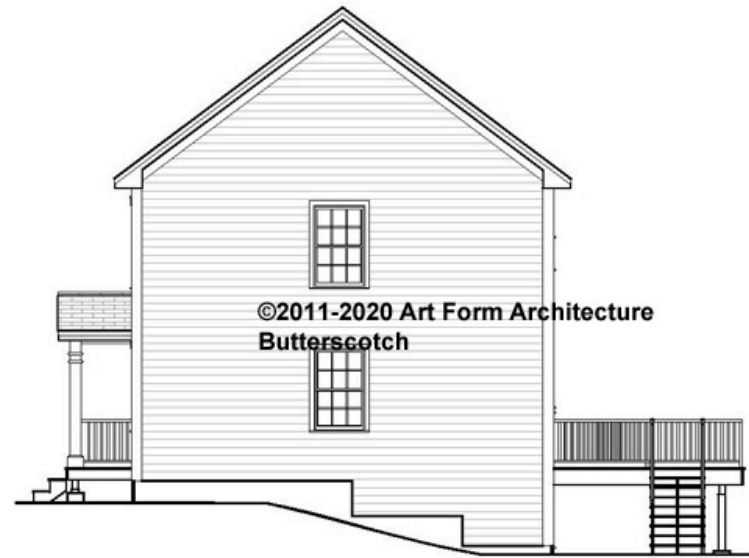


Art Form Architecture, LLC

BUTTERSCOTCH - RIGHT ELEVATION

430.120.v8 GL

Some features shown are optional. Your Purchase & Sale Agreement governs, whether items are labeled "optional" in this document or not.



CRS 430.120.v8 GL Butterscotch

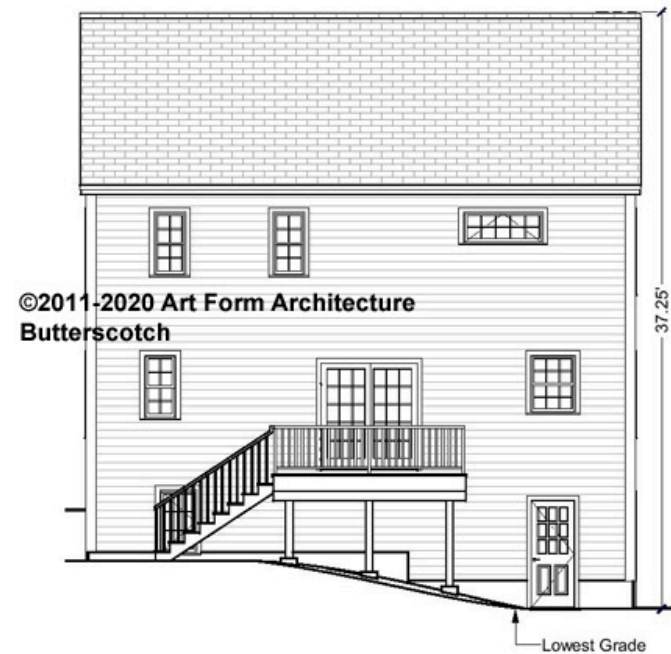


Art Form Architecture, LLC

BUTTERSCOTCH - REAR ELEVATION

430.120.v8 GL

Some features shown are optional. Your Purchase & Sale Agreement governs, whether items are labeled "optional" in this document or not.



CRS 430.120.v8 GL Butterscotch

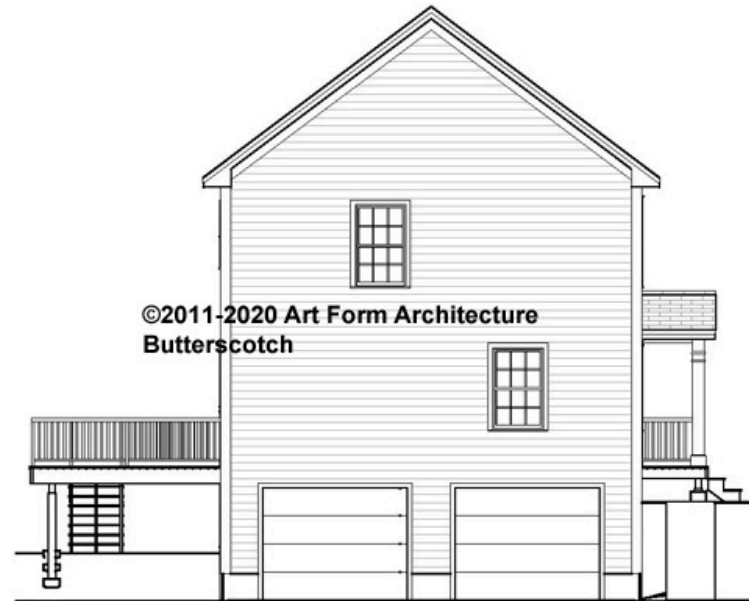


Art Form Architecture, LLC

BUTTERSCOTCH - LEFT ELEVATION

430.120.v8 GL

Some features shown are optional. Your Purchase & Sale Agreement governs, whether items are labeled "optional" in this document or not.



CRS 430.120.v8 GL Butterscotch