



Art Form Architecture, LLC

## BONNIE RANCH

679.124.v51 GL

In addition to our Terms and Conditions (the "Terms"), please be aware of the following:

Art Form Architecture, LLC ("Artform") requires that our Drawings be built substantially as designed. Artform will not be obligated by or liable for use of this design with markups as part of any builder agreement. While we attempt to accommodate where possible and reasonable, and where the changes do not denigrate our design, any and all changes to Drawings must be approved in writing by Artform. It is recommended that you have your Drawing updated by Artform prior to attaching any Drawing to any builder agreement. Artform shall not be responsible for the misuse of or unauthorized alterations to any of its Drawings.



Width 68.00 <sup>FT</sup>

Depth 56.00 <sup>FT</sup>

Height 21.75 <sup>FT</sup>

LIVING AREA	1965 <sup>FT</sup>
Main	1965 <sup>FT</sup>
Future	0 <sup>FT</sup>
2 <sup>nd</sup> Unit	0 <sup>FT</sup>

BEDROOMS	3
Main	3
Future	0
2 <sup>nd</sup> Unit	0

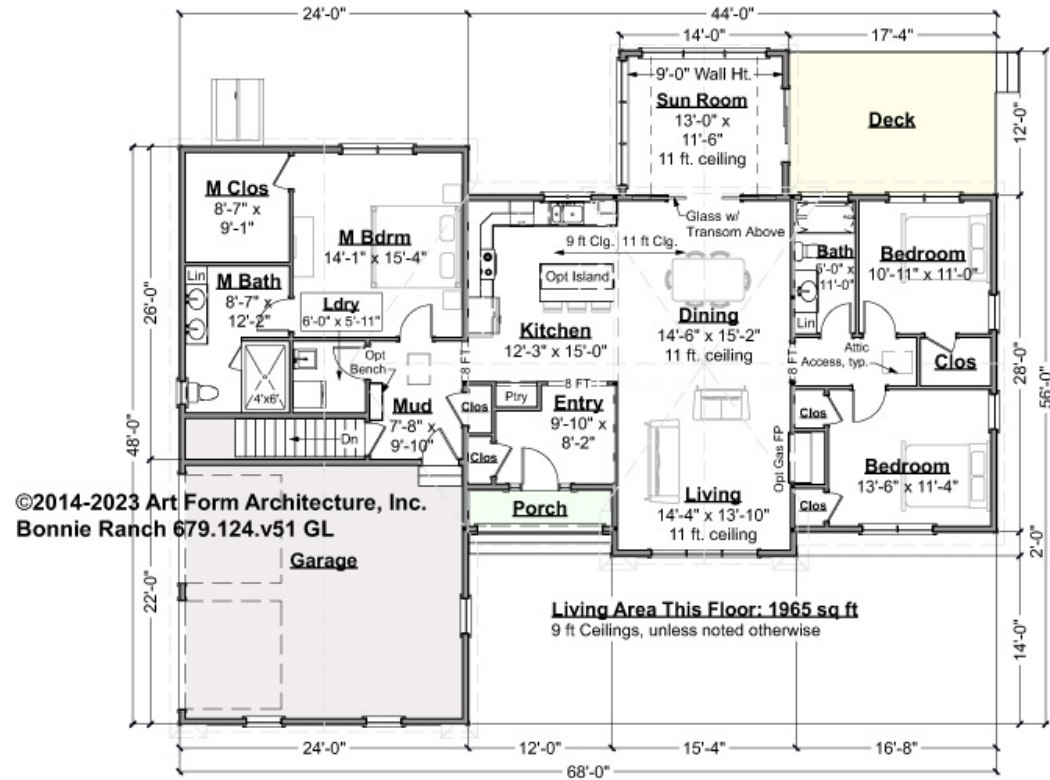
BATHROOMS	2
Main	2
Future	0
2 <sup>nd</sup> Unit	0



## BONNIE RANCH - 1<sup>ST</sup> FLOOR

679.124.v51 GL

Some features shown are optional. Your Purchase & Sale Agreement governs, whether items are labeled "optional" in this document or not.



CLG HT SHOWN 9'-0"

CLG HT POSSIBLE 8'-0"

\* Major Change Fee, see website plan page for cost

F1 LIVING AREA	1965 <sup>FT</sup>
Main	1965.00 <sup>FT</sup>
Future	FT
2 <sup>nd</sup> Unit	FT

F1 BEDROOMS	3
Main	3.00
Future	
2 <sup>nd</sup> Unit	

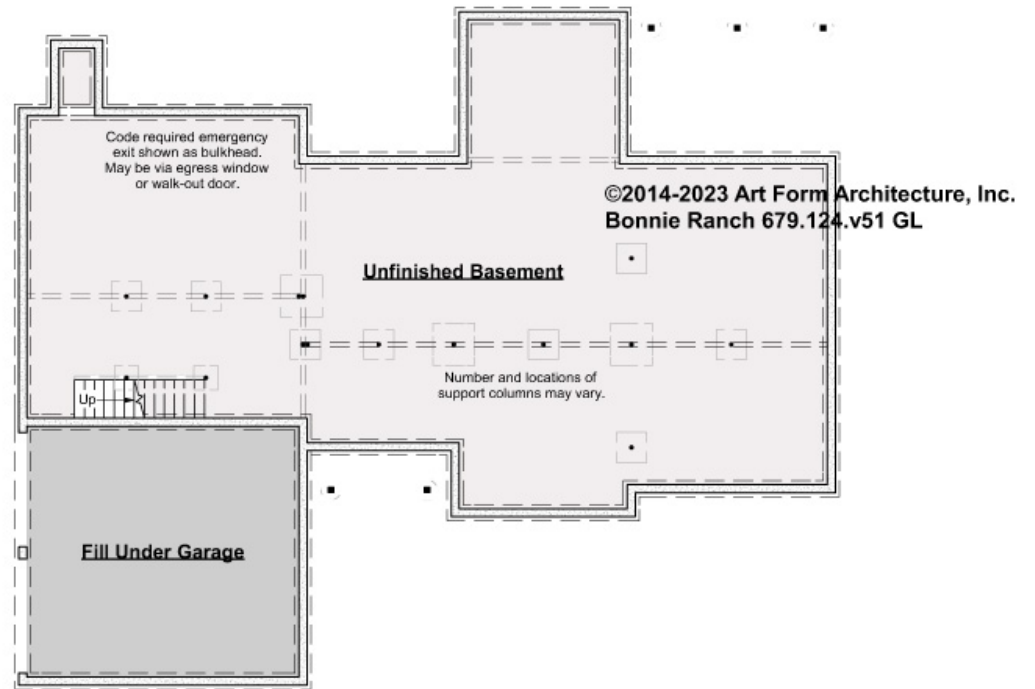
F1 BATHROOMS	2
Main	2.00
Future	
2 <sup>nd</sup> Unit	



## BONNIE RANCH - BASEMENT

679.124.v51 GL

Some features shown are optional. Your Purchase & Sale Agreement governs, whether items are labeled "optional" in this document or not.



CLG HT SHOWN 7'-8"

CLG HT POSSIBLE 8'-0"

\* Major Change Fee, see website plan page for cost

F1 LIVING AREA		0 FT	F1 BEDROOMS		0	F1 BATHROOMS		0
Main		FT	Main			Main		
Future		FT	Future			Future		
2 <sup>nd</sup> Unit		FT	2 <sup>nd</sup> Unit			2 <sup>nd</sup> Unit		

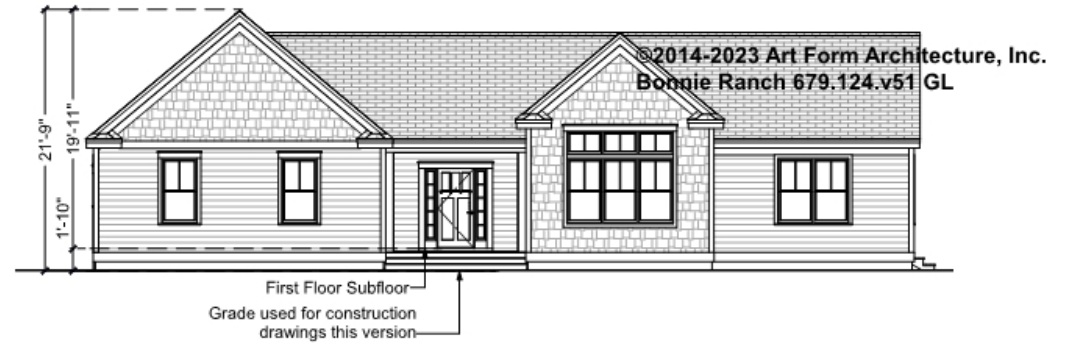


Art Form Architecture, LLC

## BONNIE RANCH - FRONT ELEVATION

### 679.124.v51 GL

Some features shown are optional. Your Purchase & Sale Agreement governs, whether items are labeled "optional" in this document or not.





Art Form Architecture, LLC

## BONNIE RANCH - RIGHT ELEVATION

### 679.124.v51 GL

Some features shown are optional. Your Purchase & Sale Agreement governs, whether items are labeled "optional" in this document or not.

©2014-2023 Art Form Architecture, Inc.  
Bonnie Ranch 679.124.v51 GL





Art Form Architecture, LLC

## BONNIE RANCH - REAR ELEVATION

### 679.124.v51 GL

Some features shown are optional. Your Purchase & Sale Agreement governs, whether items are labeled "optional" in this document or not.

©2014-2023 Art Form Architecture, Inc.  
Bonnie Ranch 679.124.v51 GL





Art Form Architecture, LLC

## BONNIE RANCH - LEFT ELEVATION

### 679.124.v51 GL

Some features shown are optional. Your Purchase & Sale Agreement governs, whether items are labeled "optional" in this document or not.







Art Form Architecture, LLC

## BONNIE RANCH - REAR RENDER

679.124.v51 GL

—

Some features shown are optional. Your Purchase & Sale Agreement governs, whether items are labeled "optional" in this document or not.

