



# BLAINE

## 1113.500.v2 SL

Note - this is a slab-on-grade first floor. Yes, we can convert it to full foundation, as a Major Change.

In addition to our Terms and Conditions (the "Terms"), please be aware of the following:

Art Form Architecture, LLC ("Artform") requires that our Drawings be built substantially as designed. Artform will not be obligated by or liable for use of this design with markups as part of any builder agreement. While we attempt to accommodate where possible and reasonable, and where the changes do not denigrate our design, any and all changes to Drawings must be approved in writing by Artform. It is recommended that you have your Drawing updated by Artform prior to attaching any Drawing to any builder agreement. Artform shall not be responsible for the misuse of or unauthorized alterations to any of its Drawings.



©2022-2023 Art Form Architecture, Inc.  
Blaine 1113.500.v2 SL

Width 22.00 FT

Depth 34.00 FT

Height 29.00 FT

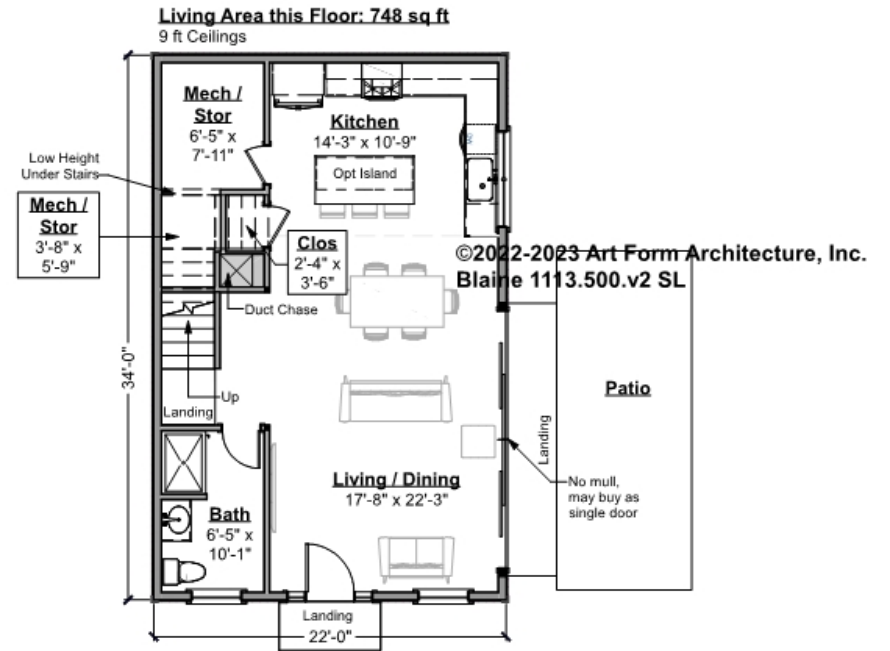
| LIVING AREA          |         | BEDROOMS             |   | BATHROOMS            |   |
|----------------------|---------|----------------------|---|----------------------|---|
|                      | 1496 FT |                      | 3 |                      | 2 |
| Main                 | 1496 FT | Main                 | 3 | Main                 | 2 |
| Future               | 0 FT    | Future               | 0 | Future               | 0 |
| 2 <sup>nd</sup> Unit | 0 FT    | 2 <sup>nd</sup> Unit | 0 | 2 <sup>nd</sup> Unit | 0 |



# BLAINE - 1<sup>ST</sup> FLOOR

1113.500.v2 SL

Some features shown are optional. Your Purchase & Sale Agreement governs, whether items are labeled "optional" in this document or not.



CLG HT SHOWN 9'-0"      CLG HT POSSIBLE 8'-0"

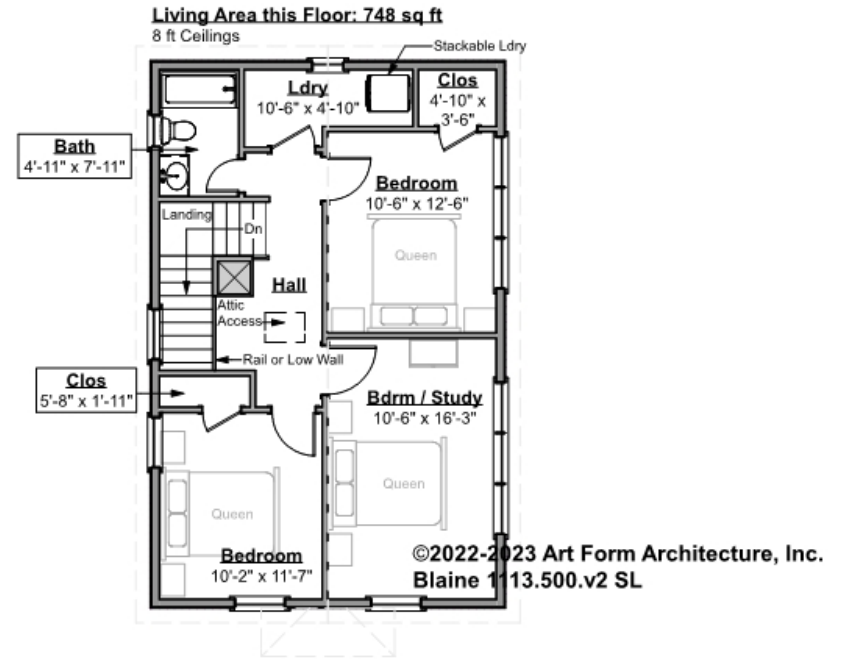
\* Major Change Fee, see website plan page for cost

| F1 LIVING AREA       |           | F1 BEDROOMS          |      | F1 BATHROOMS         |      |
|----------------------|-----------|----------------------|------|----------------------|------|
| Main                 | 748 FT    | Main                 | 0    | Main                 | 1    |
| Future               | 748.00 FT | Future               | 0.00 | Future               | 1.00 |
| 2 <sup>nd</sup> Unit | FT        | 2 <sup>nd</sup> Unit |      | 2 <sup>nd</sup> Unit |      |
|                      | FT        |                      |      |                      |      |



**BLAINE - 2<sup>ND</sup> FLOOR**  
**1113.500.v2 SL**

Some features shown are optional. Your Purchase & Sale Agreement governs, whether items are labeled "optional" in this document or not.



**CLG HT SHOWN 8'-0"      CLG HT POSSIBLE 9'-0"**

*\* Major Change Fee, see website plan page for cost*

| F1 LIVING AREA       |                      | F1 BEDROOMS          |      | F1 BATHROOMS         |      |
|----------------------|----------------------|----------------------|------|----------------------|------|
|                      | 748 <sup>FT</sup>    |                      | 3    |                      | 1    |
| Main                 | 748.00 <sup>FT</sup> | Main                 | 3.00 | Main                 | 1.00 |
| Future               | FT                   | Future               |      | Future               |      |
| 2 <sup>nd</sup> Unit | FT                   | 2 <sup>nd</sup> Unit |      | 2 <sup>nd</sup> Unit |      |

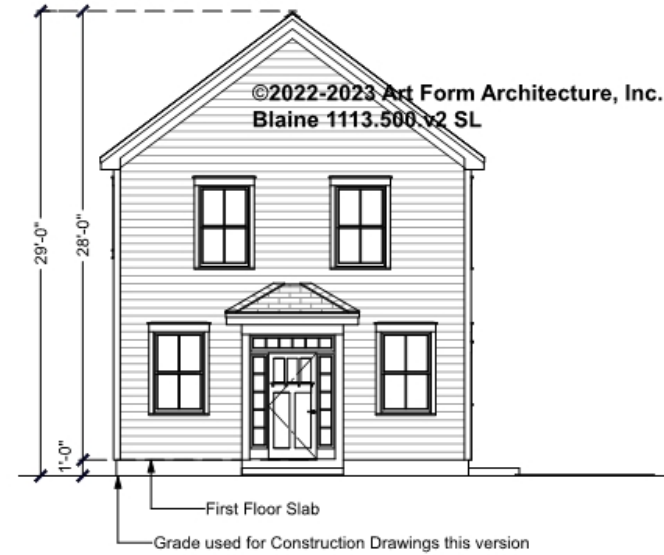


Art Form Architecture, LLC

## BLAINE - FRONT ELEVATION

1113.500.v2 SL

Some features shown are optional. Your Purchase & Sale Agreement governs, whether items are labeled "optional" in this document or not.





Art Form Architecture, LLC

## BLAINE - RIGHT ELEVATION

1113.500.v2 SL

Some features shown are optional. Your Purchase & Sale Agreement governs, whether items are labeled "optional" in this document or not.



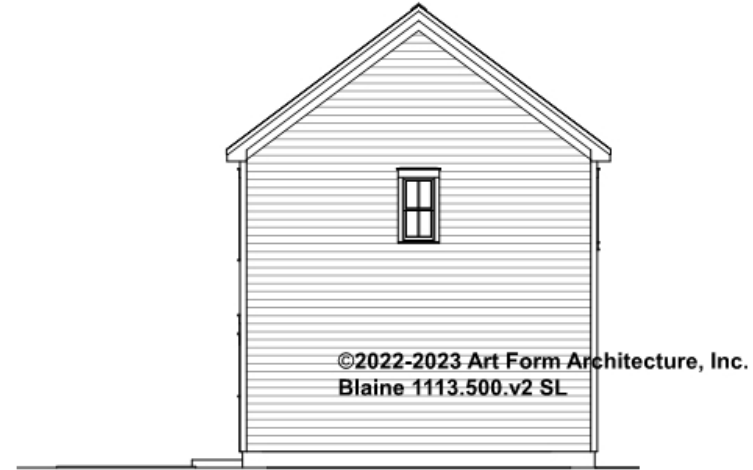


Art Form Architecture, LLC

## BLAINE - REAR ELEVATION

1113.500.v2 SL

Some features shown are optional. Your Purchase & Sale Agreement governs, whether items are labeled "optional" in this document or not.





Art Form Architecture, LLC

## BLAINE - LEFT ELEVATION

1113.500.v2 SL

Some features shown are optional. Your Purchase & Sale Agreement governs, whether items are labeled "optional" in this document or not.

