



Art Form Architecture, LLC

## ALEXIS CLASSIC WITH SUN

360.125 GR

In addition to our Terms and Conditions (the "Terms"), please be aware of the following:

Art Form Architecture, LLC ("Artform") requires that our Drawings be built substantially as designed. Artform will not be obligated by or liable for use of this design with markups as part of any builder agreement. While we attempt to accommodate where possible and reasonable, and where the changes do not denigrate our design, any and all changes to Drawings must be approved in writing by Artform. It is recommended that you have your Drawing updated by Artform prior to attaching any Drawing to any builder agreement. Artform shall not be responsible for the misuse of or unauthorized alterations to any of its Drawings.



Width 84.00 FT

Depth 50.00 FT

Height 34.66 FT

LIVING AREA		BEDROOMS		BATHROOMS	
	3426 FT		4		4
Main	3426 FT	Main	4	Main	4
Future	0 FT	Future	0	Future	0
2 <sup>nd</sup> Unit	0 FT	2 <sup>nd</sup> Unit	0	2 <sup>nd</sup> Unit	0



Some features shown are optional. Your Purchase & Sale Agreement governs, whether items are labeled "optional" in this document or not.



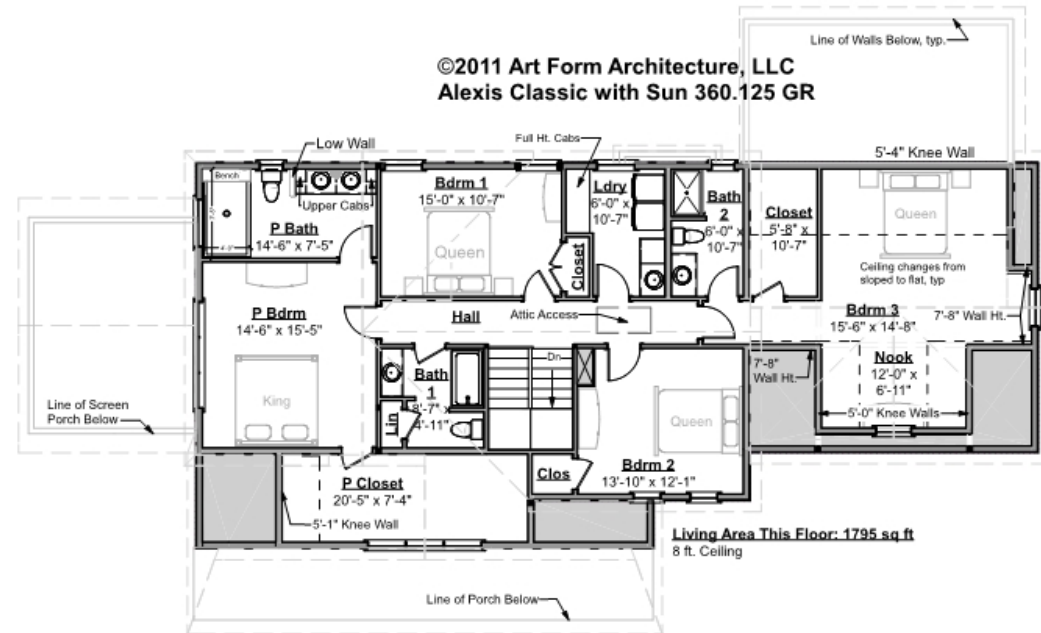
\* Major Change Fee, see website plan page for cost

<b>F1 LIVING AREA</b>		1631 <sup>FT</sup>	<b>F1 BEDROOMS</b>		0	<b>F1 BATHROOMS</b>		0.5
Main		1631.00 <sup>FT</sup>	Main			Main		0.50
Future		FT	Future			Future		
2 <sup>nd</sup> Unit		FT	2 <sup>nd</sup> Unit			2 <sup>nd</sup> Unit		



# ALEXIS CLASSIC WITH SUN - 2<sup>ND</sup> FLOOR 360.125 GR

Some features shown are optional. Your Purchase & Sale Agreement governs, whether items are labeled "optional" in this document or not.



CLG HT SHOWN 8'-0"

CLG HT POSSIBLE 9'-0"

\* Major Change Fee, see website plan page for cost

F1 LIVING AREA	1795 FT	F1 BEDROOMS	4	F1 BATHROOMS	3
Main	1795.00 FT	Main	4.00	Main	3.00
Future	FT	Future		Future	
2 <sup>nd</sup> Unit	FT	2 <sup>nd</sup> Unit		2 <sup>nd</sup> Unit	



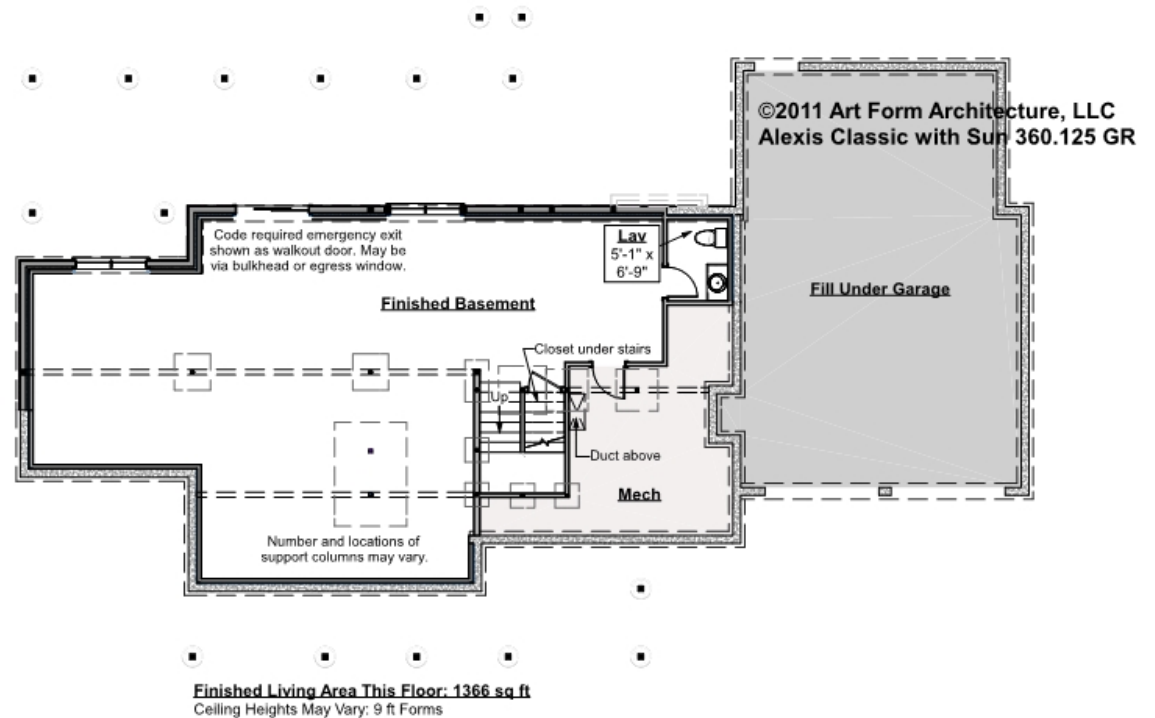
## ALEXIS CLASSIC WITH SUN - BASEMENT

**360.125 GR**

Note: finished basement area is NOT included in main or future Living Area, but IS shown on CDs.

We do this so Search doesn't mislead.

Some features shown are optional. Your Purchase & Sale Agreement governs, whether items are labeled "optional" in this document or not.



CLG HT SHOWN 8'-1" - 8'-11"

CLG HT POSSIBLE 7'-8"

*\* Major Change Fee, see website plan page for cost*

F1 LIVING AREA		0 FT	F1 BEDROOMS		0	F1 BATHROOMS		0.5
Main		FT	Main			Main		0.50
Future		FT	Future			Future		
2 <sup>nd</sup> Unit		FT	2 <sup>nd</sup> Unit			2 <sup>nd</sup> Unit		

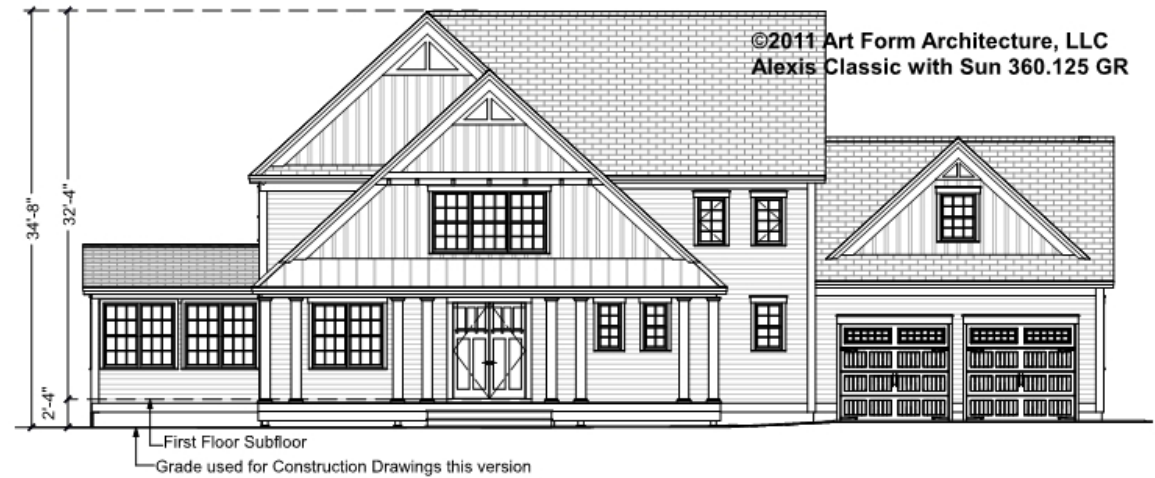


Art Form Architecture, LLC

## ALEXIS CLASSIC WITH SUN - FRONT ELEVATION

360.125 GR

Some features shown are optional. Your Purchase & Sale Agreement governs, whether items are labeled "optional" in this document or not.





Art Form Architecture, LLC

## ALEXIS CLASSIC WITH SUN - RIGHT ELEVATION

360.125 GR

—  
Some features shown are optional. Your Purchase & Sale Agreement governs, whether items are labeled "optional" in this document or not.



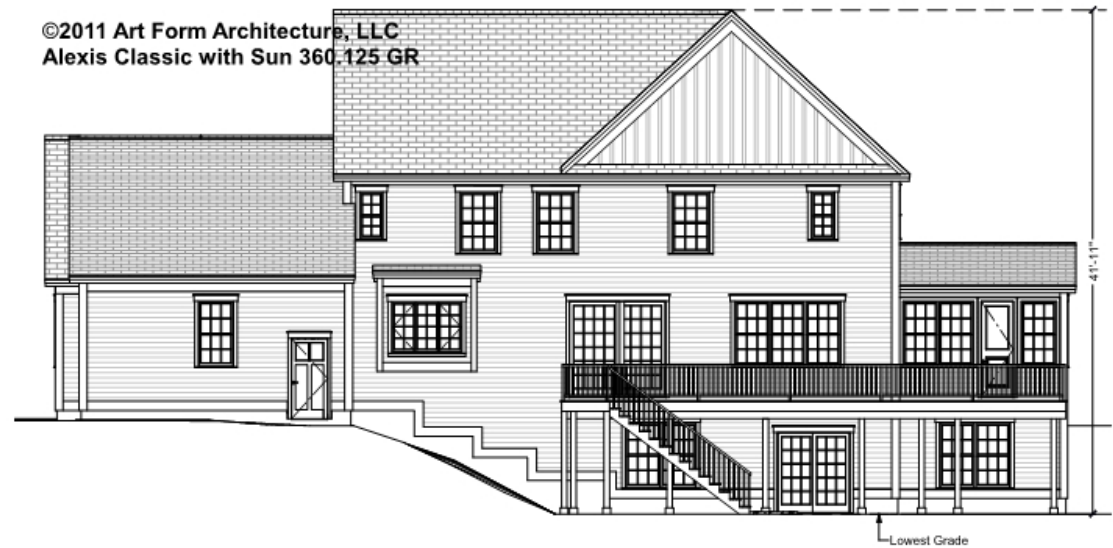


Art Form Architecture, LLC

## ALEXIS CLASSIC WITH SUN - REAR ELEVATION

360.125 GR

Some features shown are optional. Your Purchase & Sale Agreement governs, whether items are labeled "optional" in this document or not.





Art Form Architecture, LLC

## ALEXIS CLASSIC WITH SUN - LEFT ELEVATION

360.125 GR

—  
Some features shown are optional. Your Purchase & Sale Agreement governs, whether items are labeled "optional" in this document or not.

©2011 Art Form Architecture, LLC  
Alexis Classic with Sun 360.125 GR





Art Form Architecture, LLC

## ALEXIS CLASSIC WITH SUN - REAR RENDER

360.125 GR

—  
Some features shown are optional. Your Purchase & Sale Agreement governs, whether items are labeled "optional" in this document or not.

