



Art Form Architecture, LLC

## ALEXANDER PRIME

449.120.v2 GL

In addition to our Terms and Conditions (the "Terms"), please be aware of the following:

Art Form Architecture, LLC ("Artform") requires that our Drawings be built substantially as designed. Artform will not be obligated by or liable for use of this design with markups as part of any builder agreement. While we attempt to accommodate where possible and reasonable, and where the changes do not denigrate our design, any and all changes to Drawings must be approved in writing by Artform. It is recommended that you have your Drawing updated by Artform prior to attaching any Drawing to any builder agreement. Artform shall not be responsible for the misuse of or unauthorized alterations to any of its Drawings.



©2011-2023 Art Form Architecture, Inc.  
Alexander Prime 449.120.v2 GL

Width 46.00 <sup>FT</sup>

Depth 32.00 <sup>FT</sup>

Height 34.08 <sup>FT</sup>

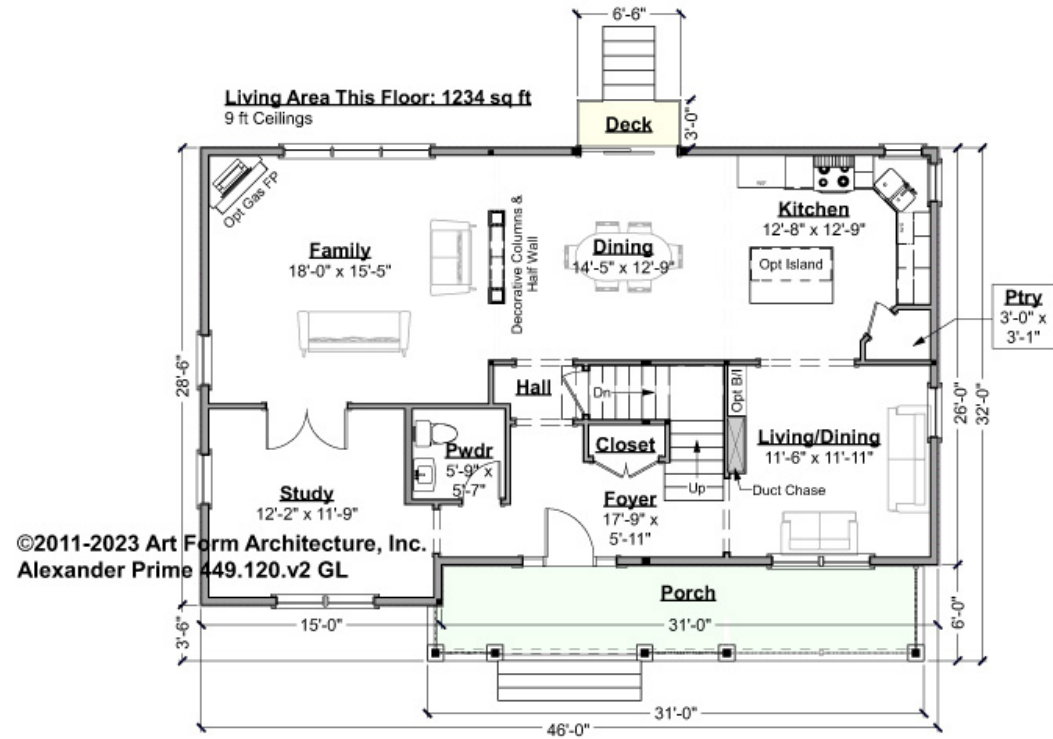
LIVING AREA		BEDROOMS		BATHROOMS	
	2500 <sup>FT</sup>		5		2.5
Main	2500 <sup>FT</sup>	Main	4	Main	2.5
Future	0 <sup>FT</sup>	Future	1	Future	0
2 <sup>nd</sup> Unit	0 <sup>FT</sup>	2 <sup>nd</sup> Unit	0	2 <sup>nd</sup> Unit	0



## ALEXANDER PRIME - 1<sup>ST</sup> FLOOR

### 449.120.v2 GL

Some features shown are optional. Your Purchase & Sale Agreement governs, whether items are labeled "optional" in this document or not.



CLG HT SHOWN 9'-0"

CLG HT POSSIBLE 8'-0"

\* Major Change Fee, see website plan page for cost

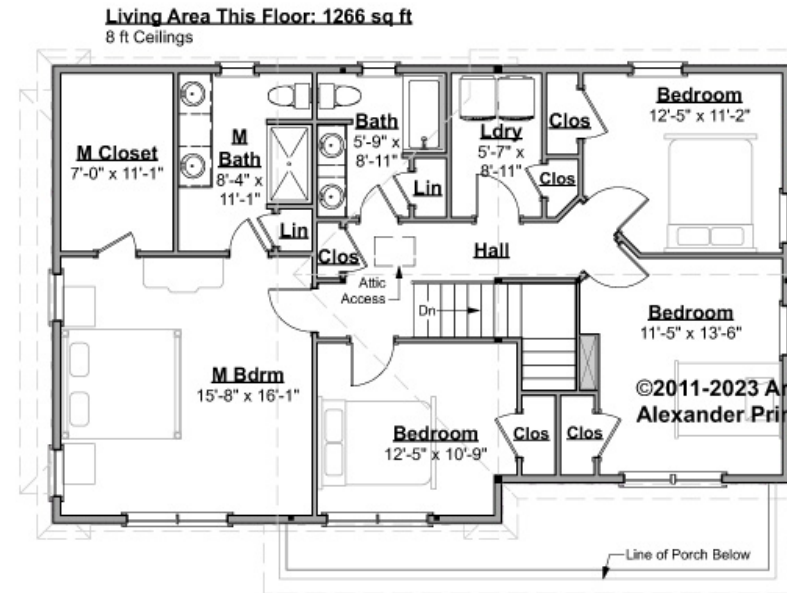
F1 LIVING AREA		1234 <sup>FT</sup>	F1 BEDROOMS		1	F1 BATHROOMS		0.5
Main		1234.00 <sup>FT</sup>	Main		0.00	Main		0.50
Future		<sup>FT</sup>	Future		1.00	Future		
2 <sup>nd</sup> Unit		<sup>FT</sup>	2 <sup>nd</sup> Unit			2 <sup>nd</sup> Unit		



## ALEXANDER PRIME - 2<sup>ND</sup> FLOOR

### 449.120.v2 GL

Some features shown are optional. Your Purchase & Sale Agreement governs, whether items are labeled "optional" in this document or not.



CLG HT SHOWN 8'-0"

CLG HT POSSIBLE 9'-0"

\* Major Change Fee, see website plan page for cost

F1 LIVING AREA		1266 <sup>FT</sup>	F1 BEDROOMS		4	F1 BATHROOMS		2
Main		1266.00 <sup>FT</sup>	Main		4.00	Main		2.00
Future		FT	Future			Future		
2 <sup>nd</sup> Unit		FT	2 <sup>nd</sup> Unit			2 <sup>nd</sup> Unit		

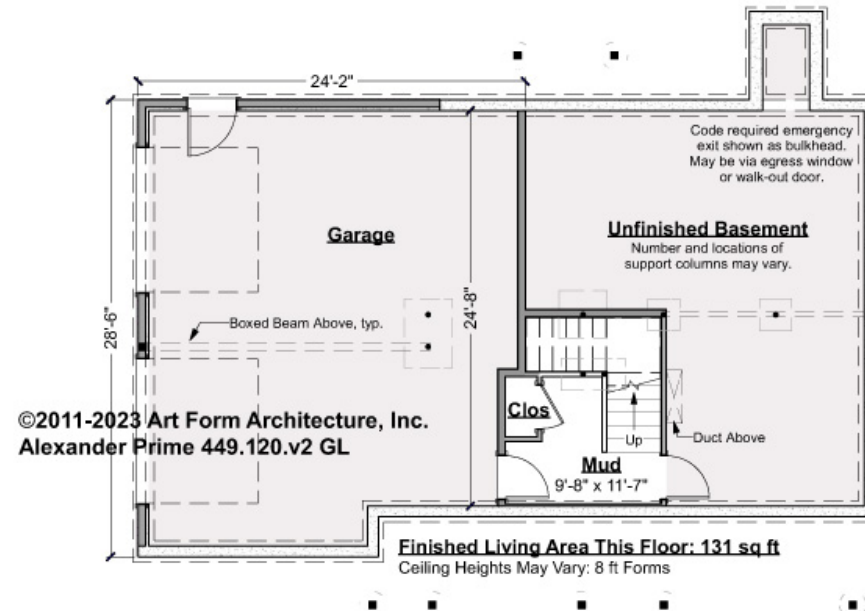


## ALEXANDER PRIME - BASEMENT

### 449.120.v2 GL

Note: finished basement area is NOT included in main or future Living Area, but IS shown on CDs. We do this so Search doesn't mislead.

Some features shown are optional. Your Purchase & Sale Agreement governs, whether items are labeled "optional" in this document or not.



CLG HT SHOWN 7'-8"

CLG HT POSSIBLE 7'-8"

\* Major Change Fee, see website plan page for cost

F1 LIVING AREA		0 FT	F1 BEDROOMS		0	F1 BATHROOMS		0
Main		FT	Main			Main		
Future		FT	Future			Future		
2 <sup>nd</sup> Unit		FT	2 <sup>nd</sup> Unit			2 <sup>nd</sup> Unit		



Art Form Architecture, LLC

## ALEXANDER PRIME - FRONT ELEVATION

449.120.v2 GL

Some features shown are optional. Your Purchase & Sale Agreement governs, whether items are labeled "optional" in this document or not.





Art Form Architecture, LLC

## ALEXANDER PRIME - RIGHT ELEVATION 449.120.v2 GL

—

Some features shown are optional. Your Purchase & Sale Agreement governs, whether items are labeled "optional" in this document or not.







Art Form Architecture, LLC

## ALEXANDER PRIME - REAR ELEVATION

449.120.v2 GL

Some features shown are optional. Your Purchase & Sale Agreement governs, whether items are labeled "optional" in this document or not.





Art Form Architecture, LLC

## ALEXANDER PRIME - LEFT ELEVATION

449.120.v2 GL

—  
Some features shown are optional. Your Purchase & Sale Agreement governs, whether items are labeled "optional" in this document or not.







Art Form Architecture, LLC

## ALEXANDER PRIME - REAR RENDER

### 449.120.v2 GL

Some features shown are optional. Your Purchase & Sale Agreement governs, whether items are labeled "optional" in this document or not.

