



ALEXANDER COMPACT WITH IN-LAW 449.124.v46 GL

Note: Front of House is on right side of floor plan images.

In addition to our Terms and Conditions (the "Terms"), please be aware of the following:

Art Form Architecture, LLC ("Artform") requires that our Drawings be built substantially as designed. Artform will not be obligated by or liable for use of this design with markups as part of any builder agreement. While we attempt to accommodate where possible and reasonable, and where the changes do not denigrate our design, any and all changes to Drawings must be approved in writing by Artform. It is recommended that you have your Drawing updated by Artform prior to attaching any Drawing to any builder agreement. Artform shall not be responsible for the misuse of or unauthorized alterations to any of its Drawings.



©2011-2023 Art Form Architecture, Inc.
Alexander Compact with In-Law 449.124.v46 GL

Width 70.17 FT

Depth 75.67 FT

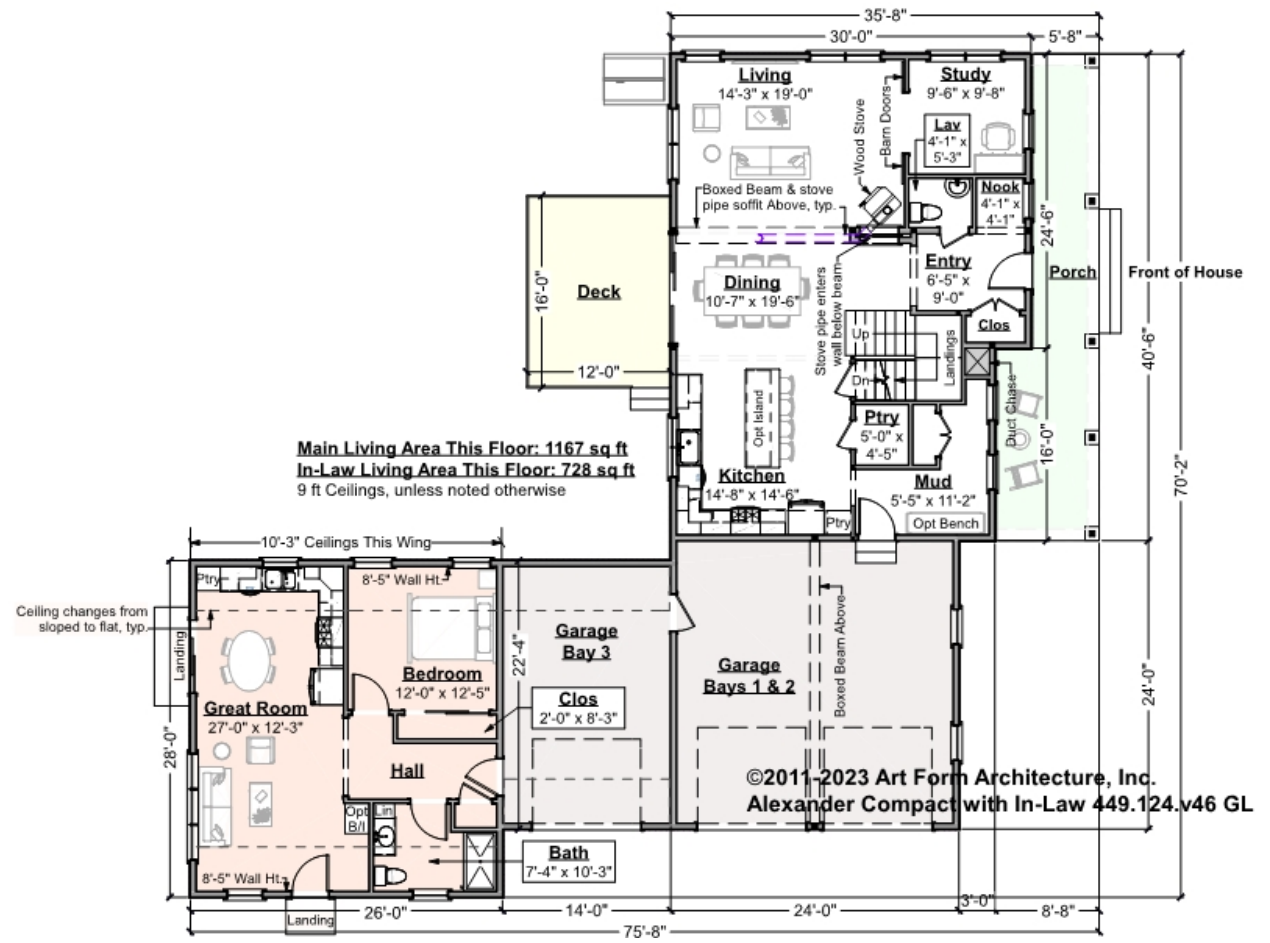
Height 33.58 FT

LIVING AREA		BEDROOMS		BATHROOMS	
	3417 FT		6		3.5
Main	2334 FT	Main	3	Main	2.5
Future	355 FT	Future	2	Future	0
2 nd Unit	728 FT	2 nd Unit	1	2 nd Unit	1



ALEXANDER COMPACT WITH IN-LAW - 1ST FLOOR 449.124.v46 GL

Some features shown are optional. Your Purchase & Sale Agreement governs, whether items are labeled "optional" in this document or not.



CLG HT SHOWN 9'-0" CLG HT POSSIBLE 8'-0"

* Major Change Fee, see website plan page for cost

F1 LIVING AREA	1895 FT	F1 BEDROOMS	2	F1 BATHROOMS	1.5
Main	1167.00 FT	Main		Main	0.50
Future	FT	Future	1.00	Future	
2 nd Unit	728.00 FT	2 nd Unit	1.00	2 nd Unit	1.00



Art Form Architecture, LLC

**ALEXANDER COMPACT WITH IN-LAW -
1ST FLOOR
449.124.v46 GL**

—
Some features shown are optional. Your Purchase & Sale Agreement governs, whether items are labeled "optional" in this document or not.

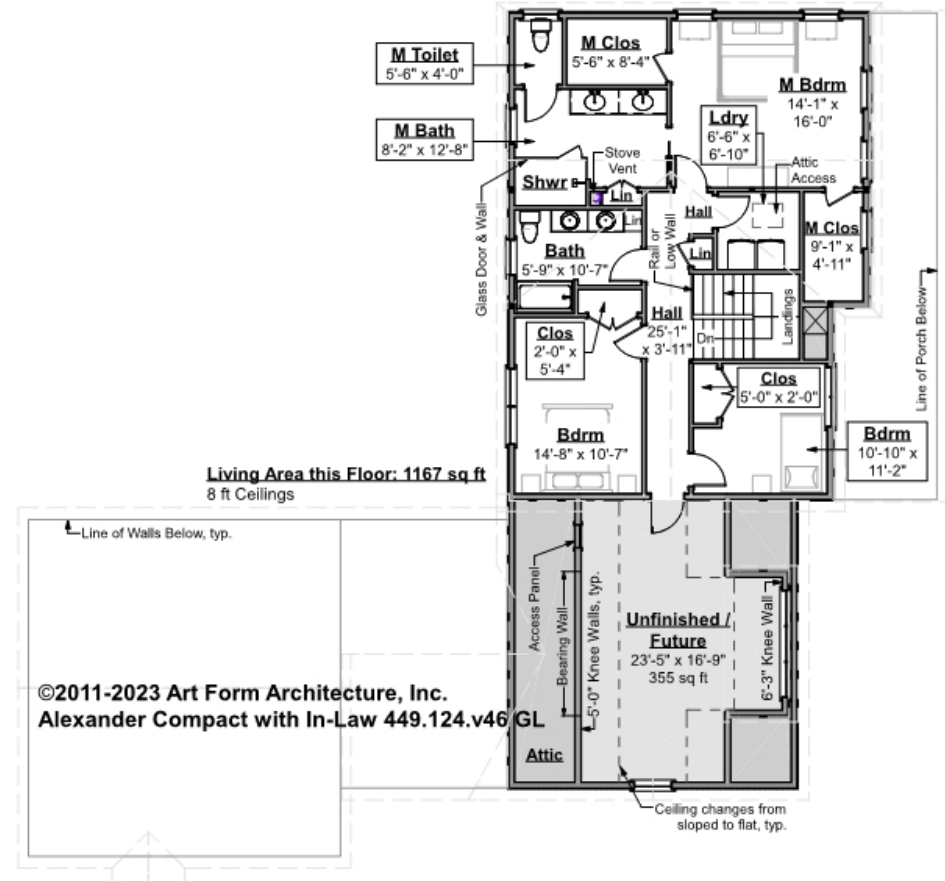


Left Side Render - Additional Image



ALEXANDER COMPACT WITH IN-LAW - 2ND FLOOR 449.124.v46 GL

Some features shown are optional. Your Purchase & Sale Agreement governs, whether items are labeled "optional" in this document or not.



CLG HT SHOWN 8'-0" CLG HT POSSIBLE 9'-0"

** Major Change Fee, see website plan page for cost*

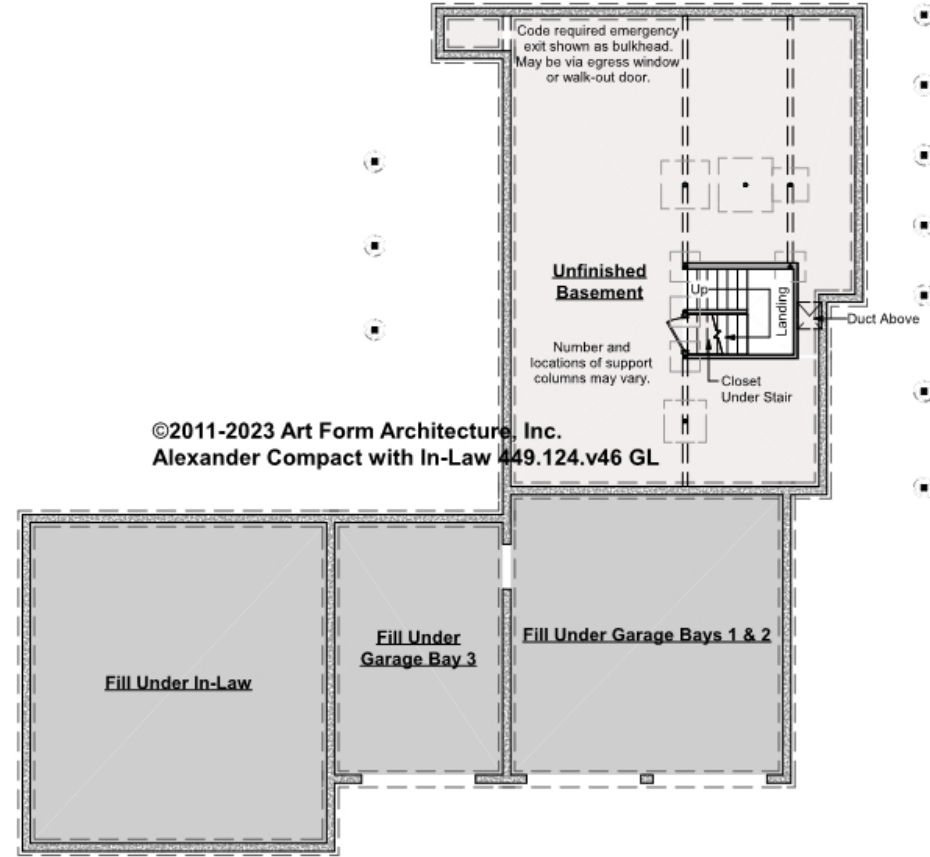
F1 LIVING AREA	1522 FT	F1 BEDROOMS	4	F1 BATHROOMS	2
Main	1167.00 FT	Main	3.00	Main	2.00
Future	355.00 FT	Future	1.00	Future	
2 nd Unit	FT	2 nd Unit		2 nd Unit	



ALEXANDER COMPACT WITH IN-LAW - BASEMENT

449.124.v46 GL

Some features shown are optional. Your Purchase & Sale Agreement governs, whether items are labeled "optional" in this document or not.



CLG HT SHOWN 7'-8" CLG HT POSSIBLE 9'-0"

* Major Change Fee, see website plan page for cost

F1 LIVING AREA		F1 BEDROOMS		F1 BATHROOMS	
0	FT	0		0	
Main	FT	Main		Main	
Future	FT	Future		Future	
2 nd Unit	FT	2 nd Unit		2 nd Unit	



Art Form Architecture, LLC

ALEXANDER COMPACT WITH IN-LAW - FRONT ELEVATION

449.124.v46 GL

Some features shown are optional. Your Purchase & Sale Agreement governs, whether items are labeled "optional" in this document or not.





Art Form Architecture, LLC

ALEXANDER COMPACT WITH IN-LAW - RIGHT ELEVATION

449.124.v46 GL

—
Some features shown are optional. Your Purchase & Sale Agreement governs, whether items are labeled "optional" in this document or not.





Art Form Architecture, LLC

ALEXANDER COMPACT WITH IN-LAW - REAR ELEVATION

449.124.v46 GL

—
Some features shown are optional. Your Purchase & Sale Agreement governs, whether items are labeled "optional" in this document or not.





Art Form Architecture, LLC

ALEXANDER COMPACT WITH IN-LAW - LEFT ELEVATION

449.124.v46 GL

—
Some features shown are optional. Your Purchase & Sale Agreement governs, whether items are labeled "optional" in this document or not.

©2011-2023 Art Form Architecture, Inc.
Alexander Compact with In-Law 449.124.v46 GL





Art Form Architecture, LLC

ALEXANDER COMPACT WITH IN-LAW - REAR RENDER

449.124.v46 GL

—
Some features shown are optional. Your Purchase & Sale Agreement governs, whether items are labeled "optional" in this document or not.

