



# ALEXANDER CLASSIC

## 449.124.v48 GL

In addition to our Terms and Conditions (the "Terms"), please be aware of the following:

Art Form Architecture, LLC ("Artform") requires that our Drawings be built substantially as designed. Artform will not be obligated by or liable for use of this design with markups as part of any builder agreement. While we attempt to accommodate where possible and reasonable, and where the changes do not denigrate our design, any and all changes to Drawings must be approved in writing by Artform. It is recommended that you have your Drawing updated by Artform prior to attaching any Drawing to any builder agreement. Artform shall not be responsible for the misuse of or unauthorized alterations to any of its Drawings.



Width 66.00 FT

Depth 48.16 FT

Height 34.00 FT

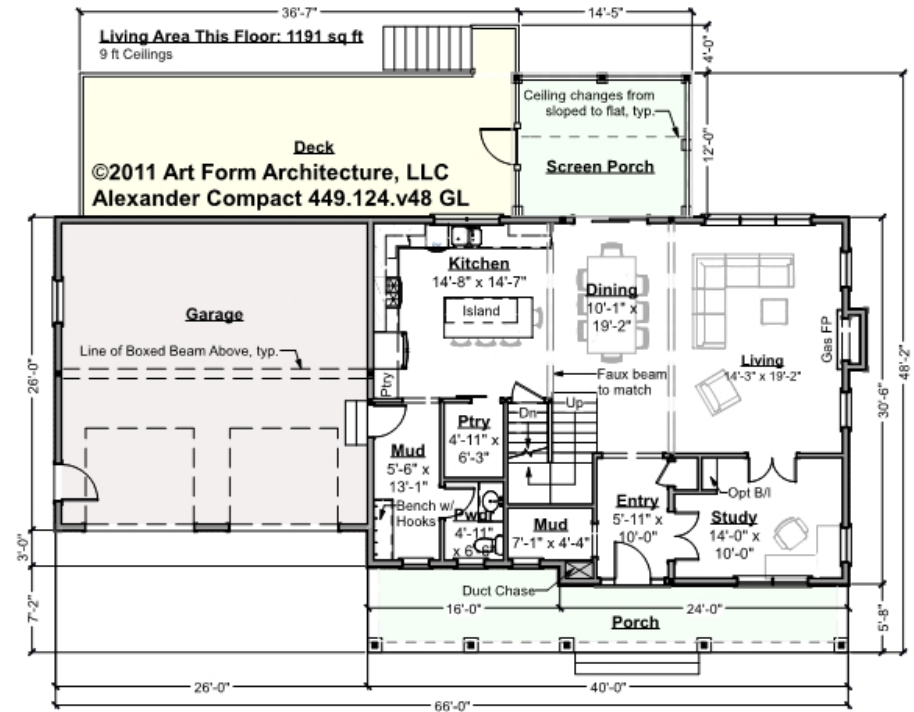
LIVING AREA		BEDROOMS		BATHROOMS	
	2987 FT		6		2.5
Main	2987 FT	Main	4	Main	2.5
Future	0 FT	Future	2	Future	0
2 <sup>nd</sup> Unit	0 FT	2 <sup>nd</sup> Unit	0	2 <sup>nd</sup> Unit	0



# ALEXANDER CLASSIC - 1<sup>ST</sup> FLOOR

## 449.124.v48 GL

Some features shown are optional. Your Purchase & Sale Agreement governs, whether items are labeled "optional" in this document or not.



CLG HT SHOWN 9'-0"      CLG HT POSSIBLE 8'-0"

\* Major Change Fee, see website plan page for cost

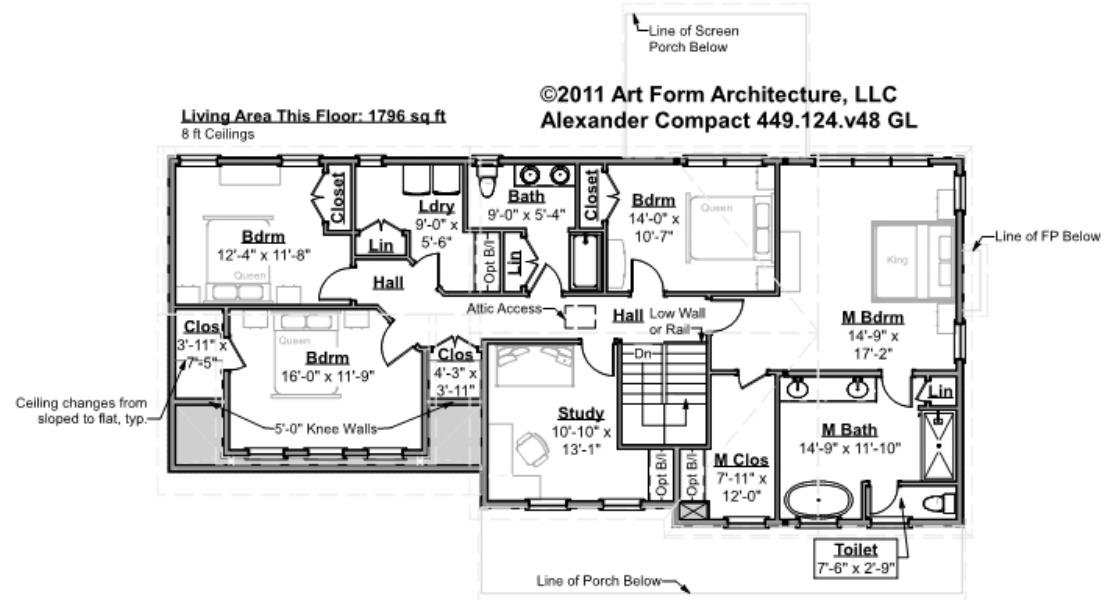
F1 LIVING AREA	1191 FT	F1 BEDROOMS	1	F1 BATHROOMS	0.5
Main	1191.00 FT	Main		Main	0.50
Future	FT	Future	1.00	Future	
2 <sup>nd</sup> Unit	FT	2 <sup>nd</sup> Unit		2 <sup>nd</sup> Unit	



# ALEXANDER CLASSIC - 2<sup>ND</sup> FLOOR

## 449.124.v48 GL

Some features shown are optional. Your Purchase & Sale Agreement governs, whether items are labeled "optional" in this document or not.



CLG HT SHOWN 8'-0"

CLG HT POSSIBLE 9'-0"

\* Major Change Fee, see website plan page for cost

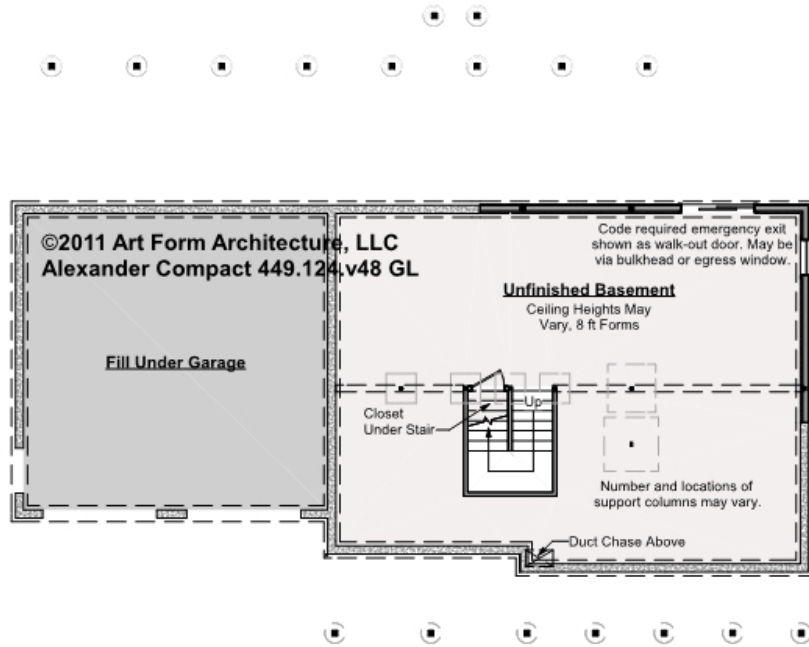
F1 LIVING AREA	1796 FT	F1 BEDROOMS	5	F1 BATHROOMS	2
Main	1796.00 FT	Main	4.00	Main	2.00
Future	FT	Future	1.00	Future	
2 <sup>nd</sup> Unit	FT	2 <sup>nd</sup> Unit		2 <sup>nd</sup> Unit	



# ALEXANDER CLASSIC - BASEMENT

## 449.124.v48 GL

Some features shown are optional. Your Purchase & Sale Agreement governs, whether items are labeled "optional" in this document or not.



CLG HT SHOWN 7'-8"      CLG HT POSSIBLE 10' & Up

\* Major Change Fee, see website plan page for cost

F1 LIVING AREA		0 FT		F1 BEDROOMS		0		F1 BATHROOMS		0	
Main	FT			Main				Main			
Future	FT			Future				Future			
2 <sup>nd</sup> Unit	FT			2 <sup>nd</sup> Unit				2 <sup>nd</sup> Unit			



Art Form Architecture, LLC

## ALEXANDER CLASSIC - FRONT ELEVATION

449.124.v48 GL

Some features shown are optional. Your Purchase & Sale Agreement governs, whether items are labeled "optional" in this document or not.



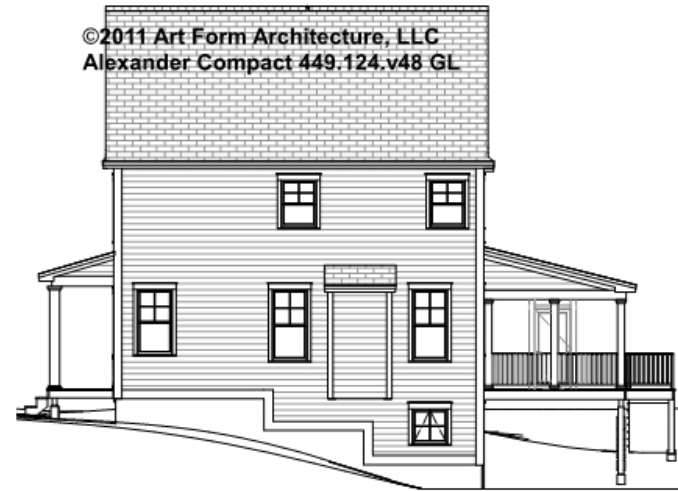


Art Form Architecture, LLC

## ALEXANDER CLASSIC - RIGHT ELEVATION

449.124.v48 GL

—  
Some features shown are optional. Your Purchase & Sale Agreement governs, whether items are labeled "optional" in this document or not.





Art Form Architecture, LLC

## ALEXANDER CLASSIC - REAR ELEVATION

449.124.v48 GL

Some features shown are optional. Your Purchase & Sale Agreement governs, whether items are labeled "optional" in this document or not.





Art Form Architecture, LLC

## ALEXANDER CLASSIC - LEFT ELEVATION

449.124.v48 GL

—  
Some features shown are optional. Your Purchase & Sale Agreement governs, whether items are labeled "optional" in this document or not.







Art Form Architecture, LLC

## ALEXANDER CLASSIC - REAR RENDER

449.124.v48 GL

—  
Some features shown are optional. Your Purchase & Sale Agreement governs, whether items are labeled "optional" in this document or not.

