



ALEXANDER - MOUNTAIN VERSION 449.124.v36 GR

Snow load for this version of the Alexander design is 95 PSF.

In addition to our Terms and Conditions (the "Terms"), please be aware of the following:

Art Form Architecture, LLC ("Artform") requires that our Drawings be built substantially as designed. Artform will not be obligated by or liable for use of this design with markups as part of any builder agreement. While we attempt to accommodate where possible and reasonable, and where the changes do not denigrate our design, any and all changes to Drawings must be approved in writing by Artform. It is recommended that you have your Drawing updated by Artform prior to attaching any Drawing to any builder agreement. Artform shall not be responsible for the misuse of or unauthorized alterations to any of its Drawings.



Width 72.50 FT

Depth 37.66 FT

Height 36.00 FT

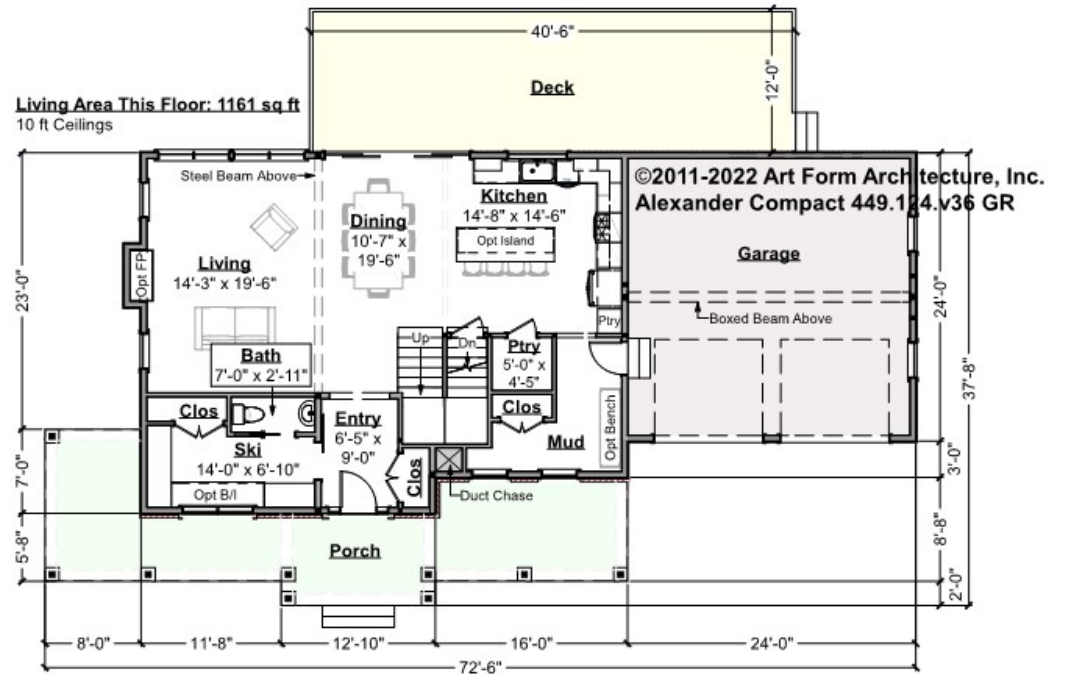
| LIVING AREA | | BEDROOMS | | BATHROOMS | |
|----------------------|----------------------|----------------------|---|----------------------|-----|
| | 2814 FT ² | | 4 | | 2.5 |
| Main | 2814 FT ² | Main | 4 | Main | 2.5 |
| Future | 0 FT ² | Future | 0 | Future | 0 |
| 2 nd Unit | 0 FT ² | 2 nd Unit | 0 | 2 nd Unit | 0 |



ALEXANDER - MOUNTAIN VERSION - 1ST FLOOR 449.124.v36 GR

NOTE: 10 ft Ceilings this floor. Refer to plan.

Some features shown are optional. Your Purchase & Sale Agreement governs, whether items are labeled "optional" in this document or not.



CLG HT SHOWN 9'-0" CLG HT POSSIBLE 9'-0"

* Major Change Fee, see website plan page for cost

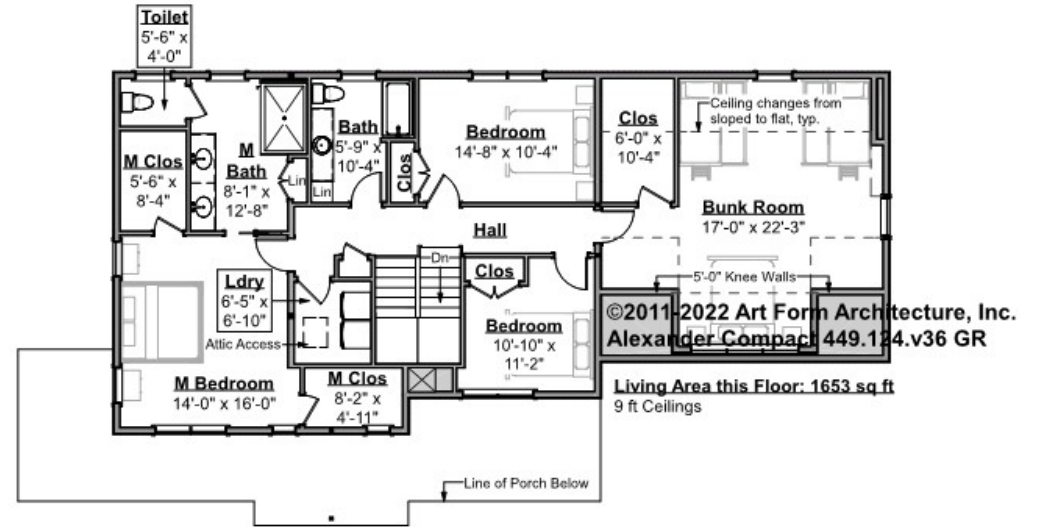
| F1 LIVING AREA | 1161 FT | F1 BEDROOMS | 0 | F1 BATHROOMS | 0.5 |
|----------------------|------------|----------------------|---|----------------------|------|
| Main | 1161.00 FT | Main | | Main | 0.50 |
| Future | FT | Future | | Future | |
| 2 nd Unit | FT | 2 nd Unit | | 2 nd Unit | |



ALEXANDER - MOUNTAIN VERSION - 2ND FLOOR

449.124.v36 GR

Some features shown are optional. Your Purchase & Sale Agreement governs, whether items are labeled "optional" in this document or not.



CLG HT SHOWN 9'-0"

CLG HT POSSIBLE 8'-0"

* Major Change Fee, see website plan page for cost

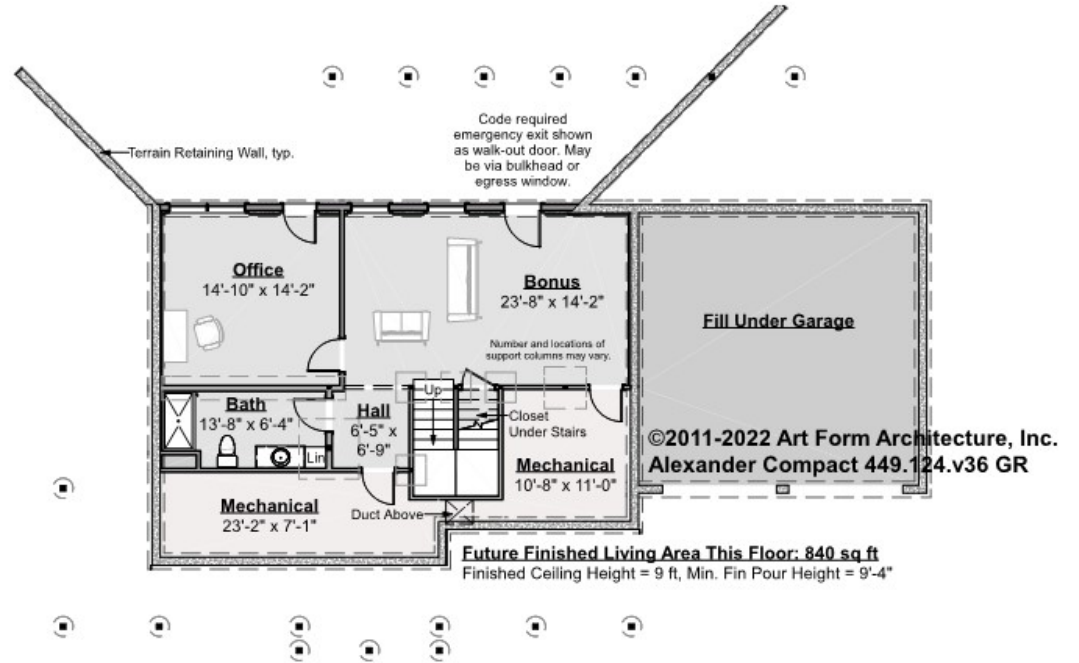
| F1 LIVING AREA | 1653 FT | F1 BEDROOMS | 4 | F1 BATHROOMS | 2 |
|----------------------|------------|----------------------|------|----------------------|------|
| Main | 1653.00 FT | Main | 4.00 | Main | 2.00 |
| Future | FT | Future | | Future | |
| 2 nd Unit | FT | 2 nd Unit | | 2 nd Unit | |



ALEXANDER - MOUNTAIN VERSION - BASEMENT

449.124.v36 GR

Some features shown are optional. Your Purchase & Sale Agreement governs, whether items are labeled "optional" in this document or not.



CLG HT SHOWN 9'-0"

CLG HT POSSIBLE 7'-8"

* Major Change Fee, see website plan page for cost

| F1 LIVING AREA | | F1 BEDROOMS | | F1 BATHROOMS | |
|----------------------|----|----------------------|--|----------------------|--|
| 0 | FT | 0 | | 0 | |
| Main | FT | Main | | Main | |
| Future | FT | Future | | Future | |
| 2 nd Unit | FT | 2 nd Unit | | 2 nd Unit | |



Art Form Architecture, LLC

ALEXANDER - MOUNTAIN VERSION - FRONT ELEVATION

449.124.v36 GR

Some features shown are optional. Your Purchase & Sale Agreement governs, whether items are labeled "optional" in this document or not.





Art Form Architecture, LLC

ALEXANDER - MOUNTAIN VERSION - RIGHT ELEVATION

449.124.v36 GR

—
Some features shown are optional. Your Purchase & Sale Agreement governs, whether items are labeled "optional" in this document or not.

©2011-2022 Art Form Architecture, Inc.
Alexander Compact 449.124.v36 GR





Art Form Architecture, LLC

ALEXANDER - MOUNTAIN VERSION - REAR ELEVATION 449.124.v36 GR

Some features shown are optional. Your Purchase & Sale Agreement governs, whether items are labeled "optional" in this document or not.





Art Form Architecture, LLC

ALEXANDER - MOUNTAIN VERSION - LEFT ELEVATION

449.124.v36 GR

—
Some features shown are optional. Your Purchase & Sale Agreement governs, whether items are labeled "optional" in this document or not.





Art Form Architecture, LLC

ALEXANDER - MOUNTAIN VERSION - REAR RENDER

449.124.v36 GR

—
Some features shown are optional. Your Purchase & Sale Agreement governs, whether items are labeled "optional" in this document or not.

