



Art Form Architecture, LLC

ALEXANDER COMPACT

449.124.v31 GL

In addition to our Terms and Conditions (the "Terms"), please be aware of the following:

Art Form Architecture, LLC ("Artform") requires that our Drawings be built substantially as designed. Artform will not be obligated by or liable for use of this design with markups as part of any builder agreement. While we attempt to accommodate where possible and reasonable, and where the changes do not denigrate our design, any and all changes to Drawings must be approved in writing by Artform. It is recommended that you have your Drawing updated by Artform prior to attaching any Drawing to any builder agreement. Artform shall not be responsible for the misuse of or unauthorized alterations to any of its Drawings.



Width 72.50 ^{FT}

Depth 35.67 ^{FT}

Height 33.75 ^{FT}

| LIVING AREA | | BEDROOMS | | BATHROOMS | |
|----------------------|--------------------|----------------------|---|----------------------|-----|
| Main | 2711 ^{FT} | Main | 4 | Main | 2.5 |
| Future | 0 ^{FT} | Future | 1 | Future | 0 |
| 2 nd Unit | 0 ^{FT} | 2 nd Unit | 0 | 2 nd Unit | 0 |



Some features shown are optional. Your Purchase & Sale Agreement governs, whether items are labeled "optional" in this document or not.



* Major Change Fee, see website plan page for cost

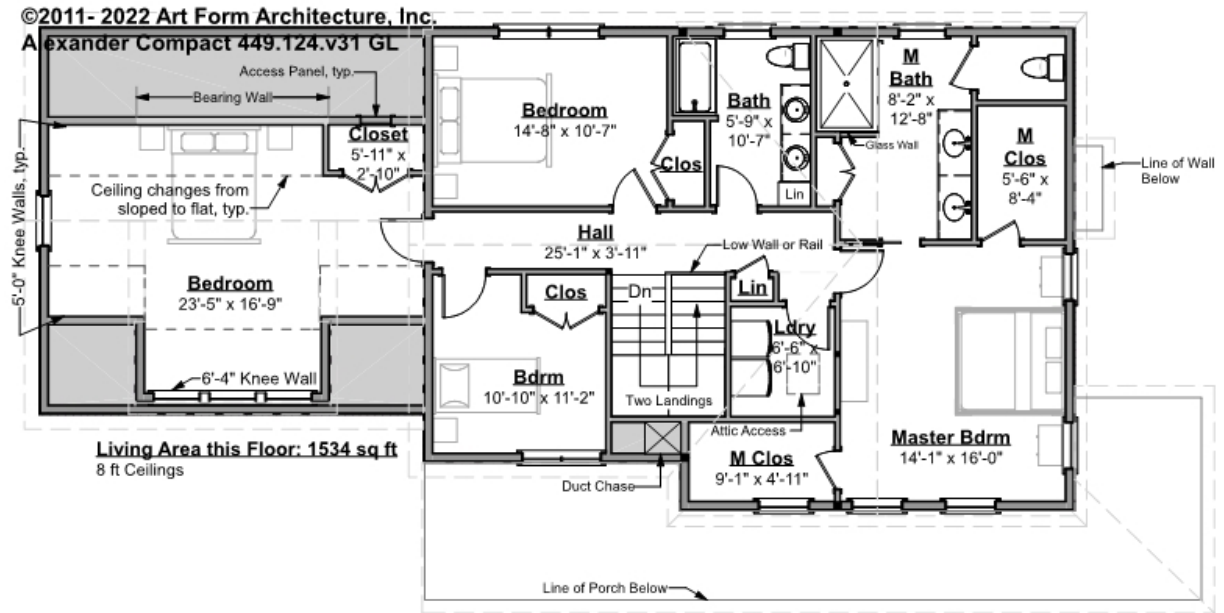
| | | | | | | | | |
|-----------------------|--|-----------------------|----------------------|--|------|----------------------|--|------|
| F1 LIVING AREA | | 1177 ^{FT} | F1 BEDROOMS | | 1 | F1 BATHROOMS | | 0.5 |
| Main | | 1177.00 ^{FT} | Main | | | Main | | 0.50 |
| Future | | FT | Future | | 1.00 | Future | | |
| 2 nd Unit | | FT | 2 nd Unit | | | 2 nd Unit | | |



ALEXANDER COMPACT - 2ND FLOOR

449.124.v31 GL

Some features shown are optional. Your Purchase & Sale Agreement governs, whether items are labeled "optional" in this document or not.



CLG HT SHOWN 8'-0"

CLG HT POSSIBLE 9'-0"

* Major Change Fee, see website plan page for cost

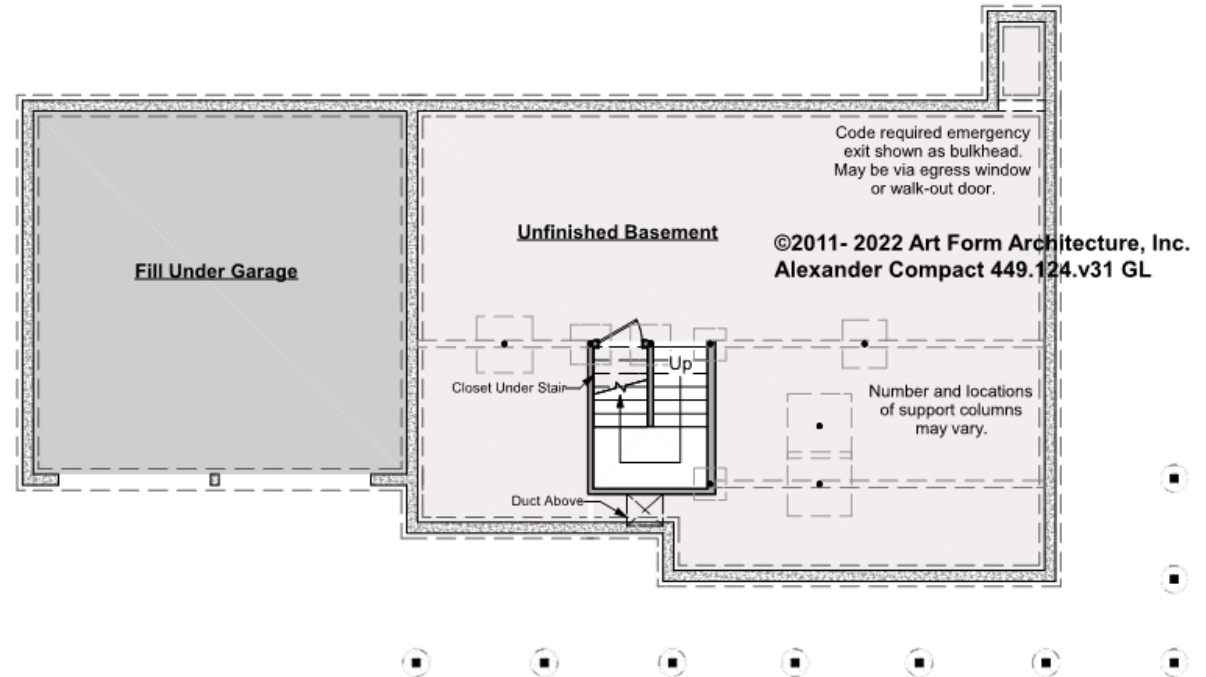
| F1 LIVING AREA | 1534 FT | F1 BEDROOMS | 4 | F1 BATHROOMS | 2 |
|----------------------|------------|----------------------|------|----------------------|------|
| Main | 1534.00 FT | Main | 4.00 | Main | 2.00 |
| Future | FT | Future | | Future | |
| 2 nd Unit | FT | 2 nd Unit | | 2 nd Unit | |



ALEXANDER COMPACT - BASEMENT

449.124.v31 GL

Some features shown are optional. Your Purchase & Sale Agreement governs, whether items are labeled "optional" in this document or not.



CLG HT SHOWN 7'-8"

CLG HT POSSIBLE 9'-0"

* Major Change Fee, see website plan page for cost

F1 LIVING AREA 0 FT

Main FT

Future FT

2nd Unit FT

F1 BEDROOMS 0

Main

Future

2nd Unit

F1 BATHROOMS 0

Main

Future

2nd Unit



Art Form Architecture, LLC

ALEXANDER COMPACT - FRONT ELEVATION

449.124.v31 GL

Some features shown are optional. Your Purchase & Sale Agreement governs, whether items are labeled "optional" in this document or not.





Art Form Architecture, LLC

ALEXANDER COMPACT - RIGHT ELEVATION

449.124.v31 GL

—
Some features shown are optional. Your Purchase & Sale Agreement governs, whether items are labeled "optional" in this document or not.





Art Form Architecture, LLC

ALEXANDER COMPACT - REAR ELEVATION

449.124.v31 GL

Some features shown are optional. Your Purchase & Sale Agreement governs, whether items are labeled "optional" in this document or not.





Art Form Architecture, LLC

ALEXANDER COMPACT - LEFT ELEVATION

449.124.v31 GL

—
Some features shown are optional. Your Purchase & Sale Agreement governs, whether items are labeled "optional" in this document or not.

