



Art Form Architecture, LLC

## ALEXANDER COMPACT 449.124.v30 GR

Snow load for this version of the Alexander Compact design is 50 PSF.

In addition to our Terms and Conditions (the "Terms"), please be aware of the following:

Art Form Architecture, LLC ("Artform") requires that our Drawings be built substantially as designed. Artform will not be obligated by or liable for use of this design with markups as part of any builder agreement. While we attempt to accommodate where possible and reasonable, and where the changes do not denigrate our design, any and all changes to Drawings must be approved in writing by Artform. It is recommended that you have your Drawing updated by Artform prior to attaching any Drawing to any builder agreement. Artform shall not be responsible for the misuse of or unauthorized alterations to any of its Drawings.



Width 64.50 <sup>FT</sup>

Depth 35.66 <sup>FT</sup>

Height 33.75 <sup>FT</sup>

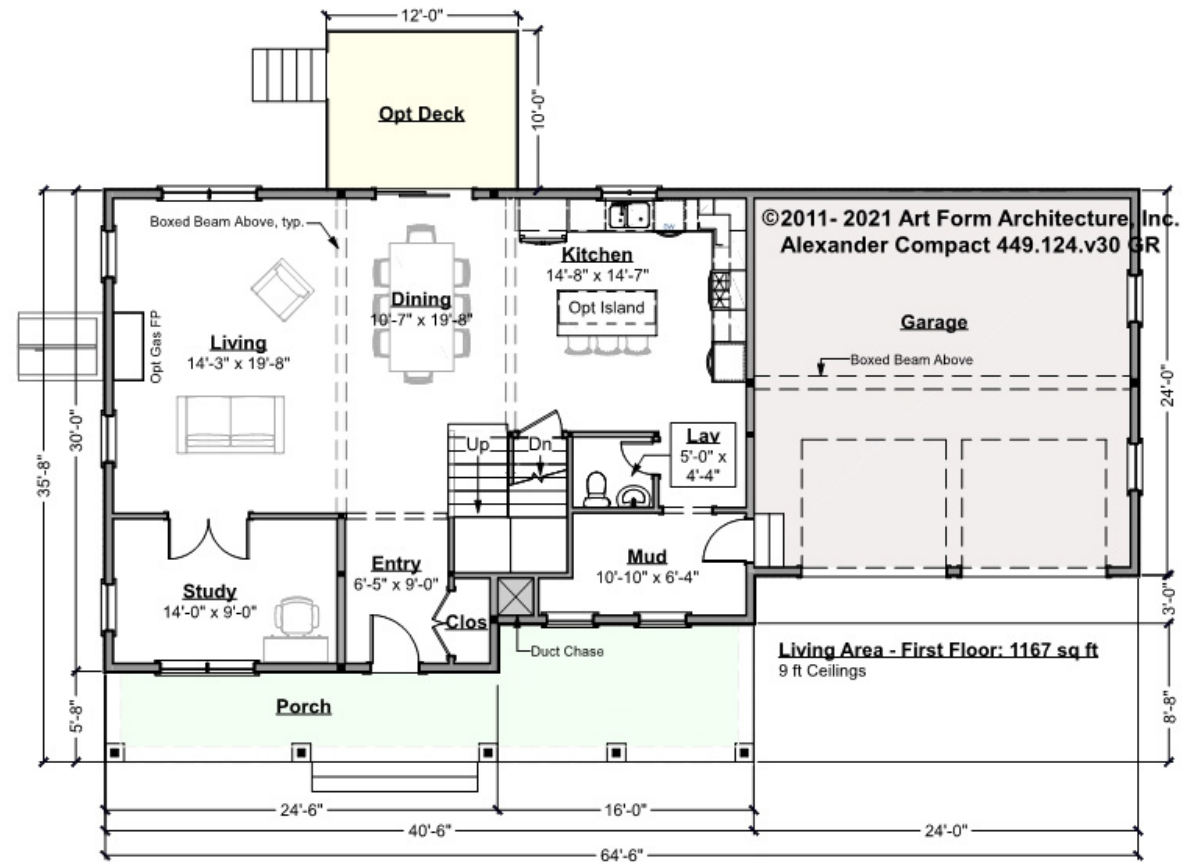
LIVING AREA		2745 <sup>FT</sup>	BEDROOMS		5	BATHROOMS		2.5
Main		2334 <sup>FT</sup>	Main		3	Main		2.5
Future		411 <sup>FT</sup>	Future		2	Future		0
2 <sup>nd</sup> Unit		0 <sup>FT</sup>	2 <sup>nd</sup> Unit		0	2 <sup>nd</sup> Unit		0



## ALEXANDER COMPACT - 1<sup>ST</sup> FLOOR

### 449.124.v30 GR

Some features shown are optional. Your Purchase & Sale Agreement governs, whether items are labeled "optional" in this document or not.



CLG HT SHOWN 9'-0"

CLG HT POSSIBLE 8'-0"

\* Major Change Fee, see website plan page for cost

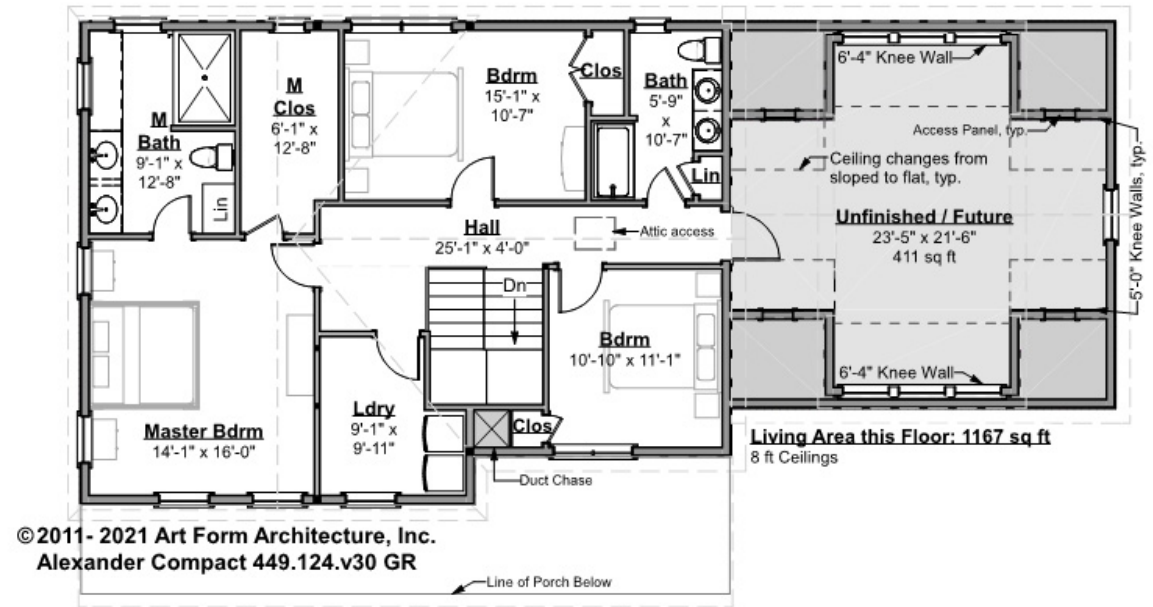
F1 LIVING AREA		1167 <sup>FT</sup>	F1 BEDROOMS		1	F1 BATHROOMS		0.5
Main		1167.00 <sup>FT</sup>	Main		0.00	Main		0.50
Future		0.00 <sup>FT</sup>	Future		1.00	Future		0.00
2 <sup>nd</sup> Unit		0.00 <sup>FT</sup>	2 <sup>nd</sup> Unit		0.00	2 <sup>nd</sup> Unit		0.00



## ALEXANDER COMPACT - 2<sup>ND</sup> FLOOR

### 449.124.v30 GR

Some features shown are optional. Your Purchase & Sale Agreement governs, whether items are labeled "optional" in this document or not.



CLG HT SHOWN 8'-0"

CLG HT POSSIBLE 9'-0"

\* Major Change Fee, see website plan page for cost

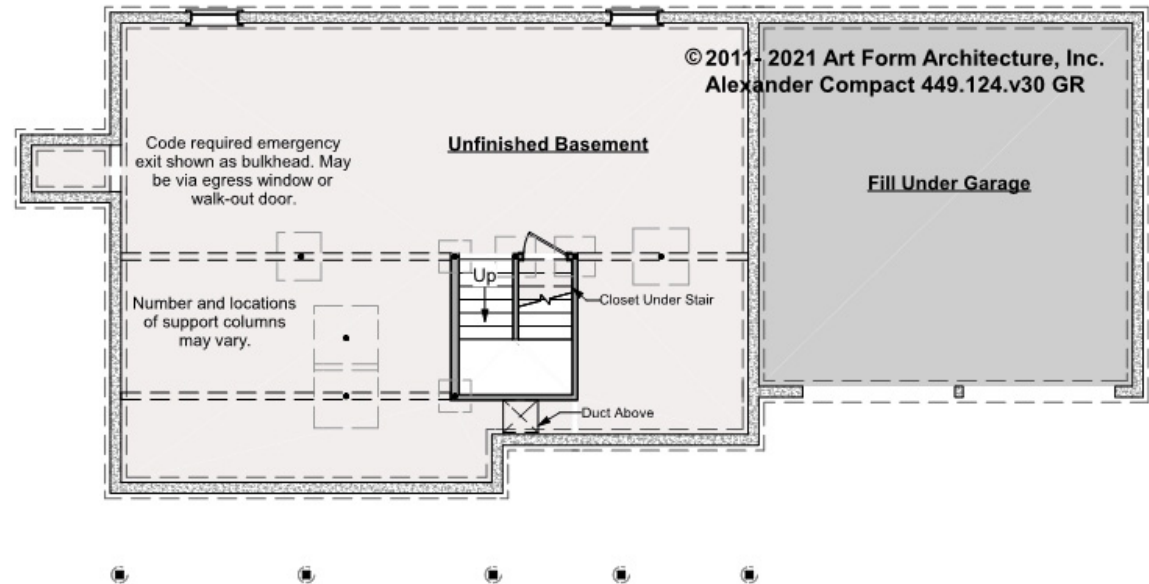
F1 LIVING AREA		1578 <sup>FT</sup>	F1 BEDROOMS		4	F1 BATHROOMS		2
Main		1167.00 <sup>FT</sup>	Main		3.00	Main		2.00
Future		411.00 <sup>FT</sup>	Future		1.00	Future		0.00
2 <sup>nd</sup> Unit		0.00 <sup>FT</sup>	2 <sup>nd</sup> Unit		0.00	2 <sup>nd</sup> Unit		0.00



## ALEXANDER COMPACT - BASEMENT

### 449.124.v30 GR

Some features shown are optional. Your Purchase & Sale Agreement governs, whether items are labeled "optional" in this document or not.



CLG HT SHOWN 7'-8"

CLG HT POSSIBLE 9'-0"

\* Major Change Fee, see website plan page for cost

F1 LIVING AREA		0 FT	F1 BEDROOMS		0	F1 BATHROOMS		0
Main		0.00 FT	Main		0.00	Main		0.00
Future		0.00 FT	Future		0.00	Future		0.00
2 <sup>nd</sup> Unit		0.00 FT	2 <sup>nd</sup> Unit		0.00	2 <sup>nd</sup> Unit		0.00



Art Form Architecture, LLC

## ALEXANDER COMPACT - FRONT ELEVATION

449.124.v30 GR

Some features shown are optional. Your Purchase & Sale Agreement governs, whether items are labeled "optional" in this document or not.







Art Form Architecture, LLC

## ALEXANDER COMPACT - RIGHT ELEVATION

449.124.v30 GR

—  
Some features shown are optional. Your Purchase & Sale Agreement governs, whether items are labeled "optional" in this document or not.



©2011- 2021 Art Form Architecture, Inc.  
Alexander Compact 449.124.v30 GR



Art Form Architecture, LLC

## ALEXANDER COMPACT - REAR ELEVATION

449.124.v30 GR

Some features shown are optional. Your Purchase & Sale Agreement governs, whether items are labeled "optional" in this document or not.



© 2011-2021 Art Form Architecture, Inc.  
Alexander Compact 449.124.v30 GR



Art Form Architecture, LLC

## ALEXANDER COMPACT - LEFT ELEVATION

449.124.v30 GR

—  
Some features shown are optional. Your Purchase & Sale Agreement governs, whether items are labeled "optional" in this document or not.

