



Art Form Architecture, LLC

## ALEXANDER CLASSIC WITH IN-LAW 449.124.v60 GL

In addition to our Terms and Conditions (the "Terms"), please be aware of the following:

Art Form Architecture, LLC ("Artform") requires that our Drawings be built substantially as designed. Artform will not be obligated by or liable for use of this design with markups as part of any builder agreement. While we attempt to accommodate where possible and reasonable, and where the changes do not denigrate our design, any and all changes to Drawings must be approved in writing by Artform. It is recommended that you have your Drawing updated by Artform prior to attaching any Drawing to any builder agreement. Artform shall not be responsible for the misuse of or unauthorized alterations to any of its Drawings.



©2011 Art Form Architecture, LLC  
Alexander Classic with In-Law 449.124.v60 GL

Width 78.00 <sup>FT</sup>

Depth 62.16 <sup>FT</sup>

Height 33.42 <sup>FT</sup>

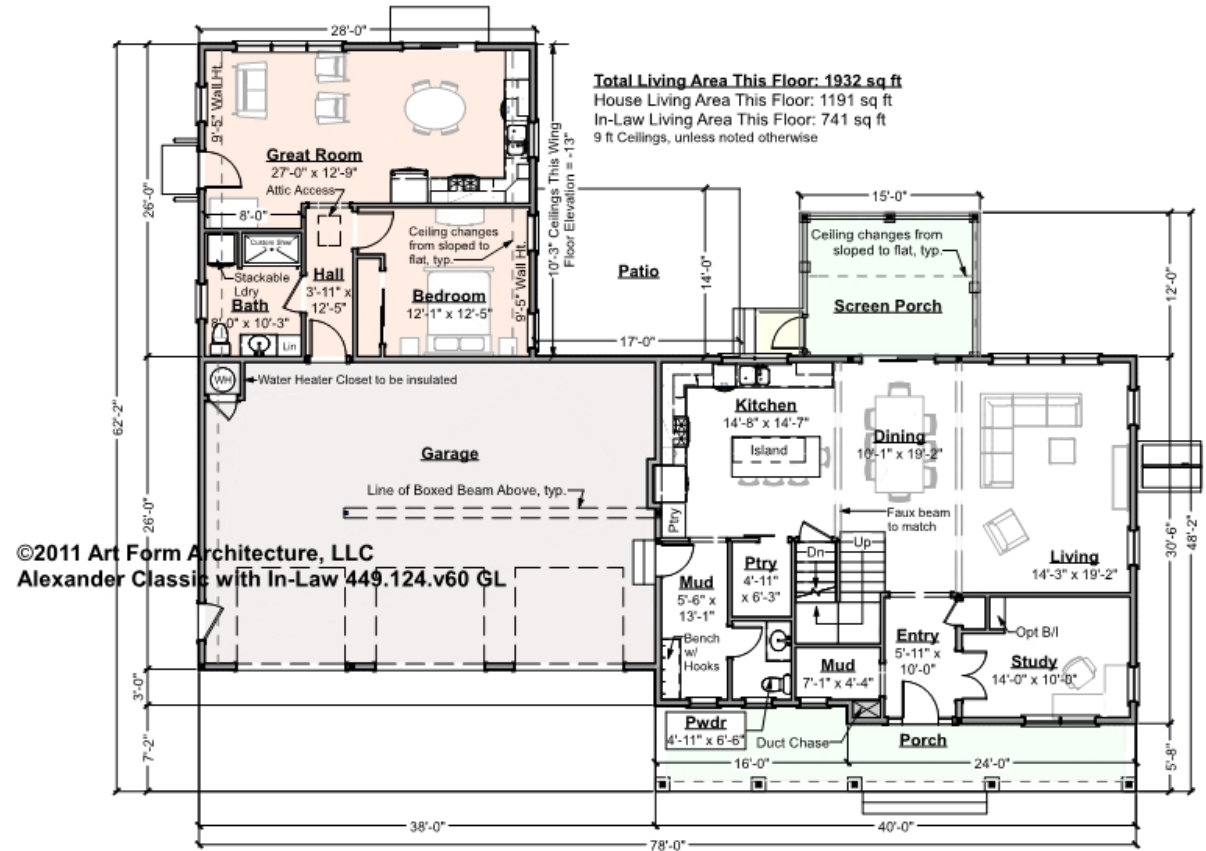
LIVING AREA		3728 <sup>FT</sup>	BEDROOMS		7	BATHROOMS		3.5
Main		2987 <sup>FT</sup>	Main		4	Main		2.5
Future		0 <sup>FT</sup>	Future		2	Future		0
2 <sup>nd</sup> Unit		741 <sup>FT</sup>	2 <sup>nd</sup> Unit		1	2 <sup>nd</sup> Unit		1



Art Form Architecture, LLC

# ALEXANDER CLASSIC WITH IN-LAW - 1<sup>ST</sup> FLOOR 449.124.v60 GL

Some features shown are optional. Your Purchase & Sale Agreement governs, whether items are labeled "optional" in this document or not.



CLG HT SHOWN 9'-0"

CLG HT POSSIBLE 8'-0"

\* Major Change Fee, see website plan page for cost

F1 LIVING AREA	1932 FT
Main	1191.00 FT
Future	FT
2 <sup>nd</sup> Unit	741.00 FT

F1 BEDROOMS	2
Main	
Future	1.00
2 <sup>nd</sup> Unit	1.00

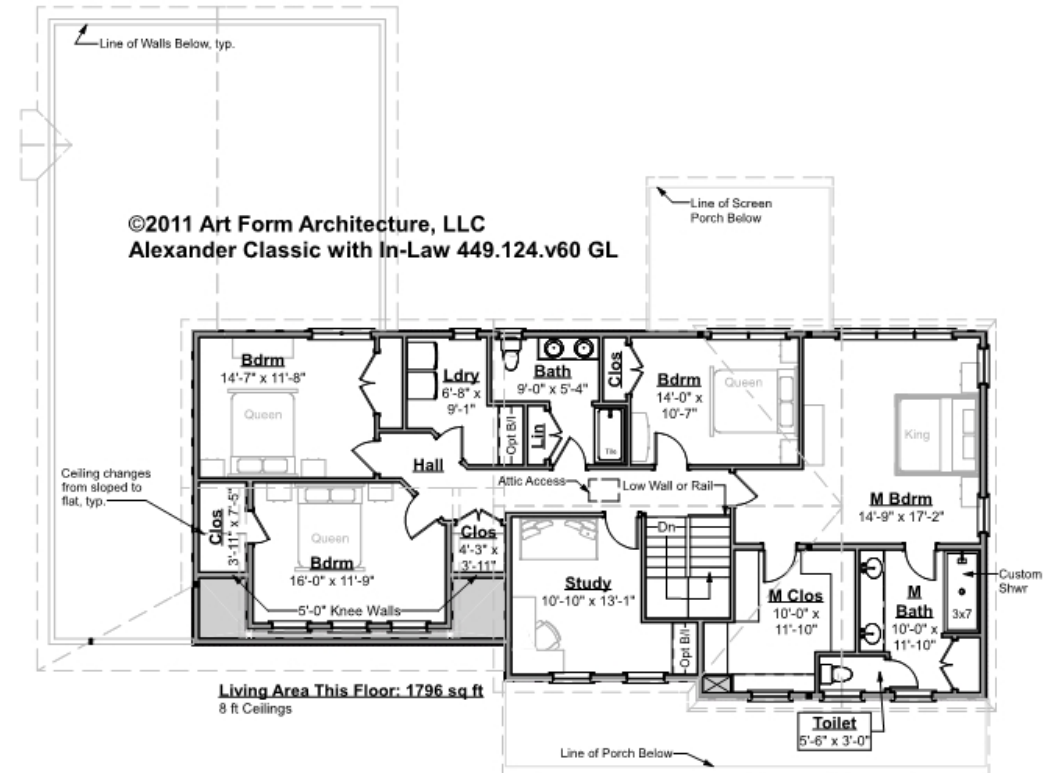
F1 BATHROOMS	1.5
Main	0.50
Future	
2 <sup>nd</sup> Unit	1.00



## ALEXANDER CLASSIC WITH IN-LAW - 2<sup>ND</sup> FLOOR 449.124.v60 GL

Art Form feels most buyers of this plan would use the Study space as a Bedroom. If you intend to use this space as a Bedroom, we can add in the Closet for you at no additional charge.

Some features shown are optional. Your Purchase & Sale Agreement governs, whether items are labeled "optional" in this document or not.



CLG HT SHOWN 8'-0"

CLG HT POSSIBLE 9'-0"

\* Major Change Fee, see website plan page for cost

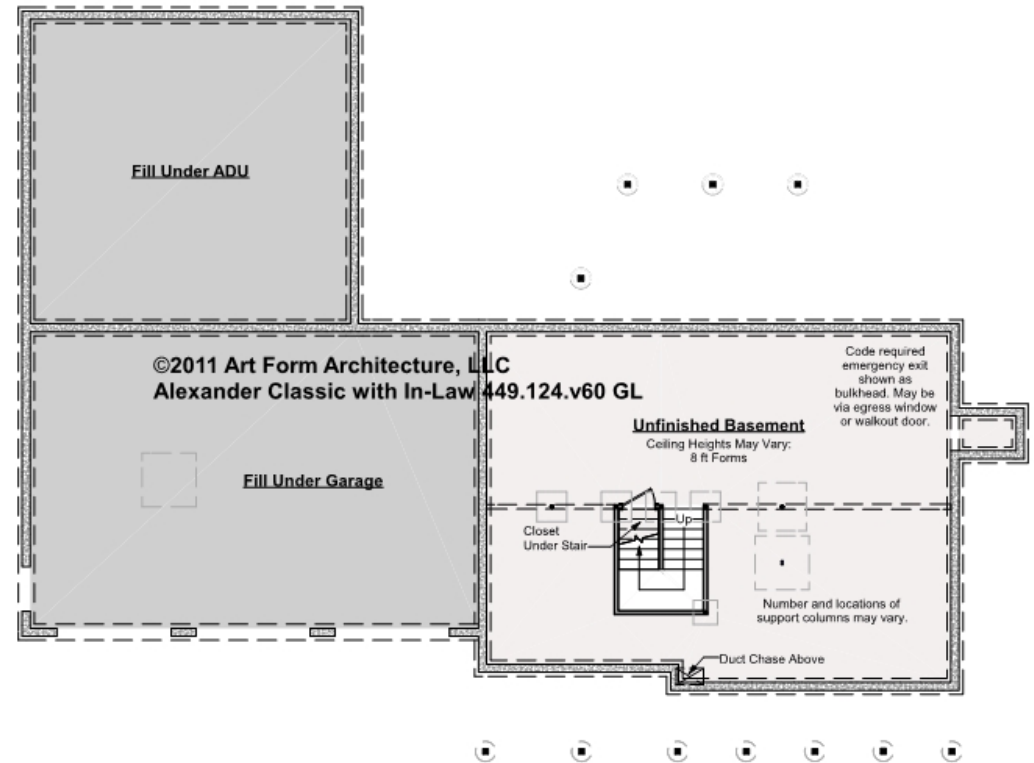
F1 LIVING AREA	1796 FT	F1 BEDROOMS	5	F1 BATHROOMS	2
Main	1796.00 FT	Main	4.00	Main	2.00
Future	FT	Future	1.00	Future	
2 <sup>nd</sup> Unit	FT	2 <sup>nd</sup> Unit		2 <sup>nd</sup> Unit	



## ALEXANDER CLASSIC WITH IN-LAW - BASEMENT

### 449.124.v60 GL

Some features shown are optional. Your Purchase & Sale Agreement governs, whether items are labeled "optional" in this document or not.



CLG HT SHOWN 7'-8"

CLG HT POSSIBLE 10' & Up

\* Major Change Fee, see website plan page for cost

F1 LIVING AREA		0 FT	F1 BEDROOMS		0	F1 BATHROOMS		0
Main		FT	Main			Main		
Future		FT	Future			Future		
2 <sup>nd</sup> Unit		FT	2 <sup>nd</sup> Unit			2 <sup>nd</sup> Unit		



Art Form Architecture, LLC

## ALEXANDER CLASSIC WITH IN-LAW - FRONT ELEVATION

449.124.v60 GL

Some features shown are optional. Your Purchase & Sale Agreement governs, whether items are labeled "optional" in this document or not.





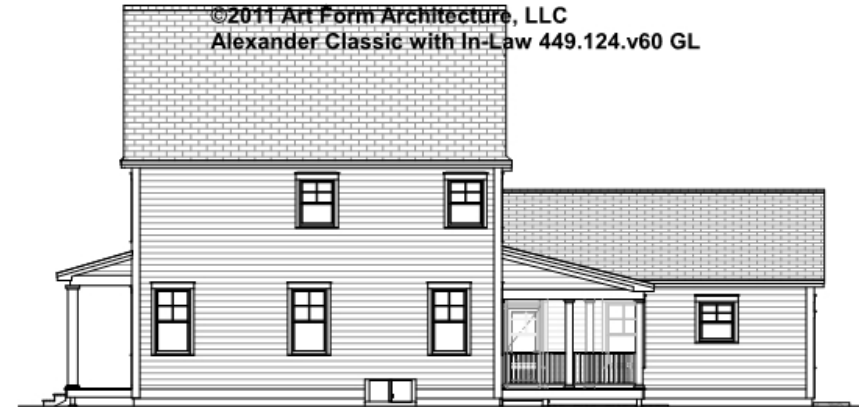
Art Form Architecture, LLC

## ALEXANDER CLASSIC WITH IN-LAW - RIGHT ELEVATION

449.124.v60 GL

—

Some features shown are optional. Your Purchase & Sale Agreement governs, whether items are labeled "optional" in this document or not.

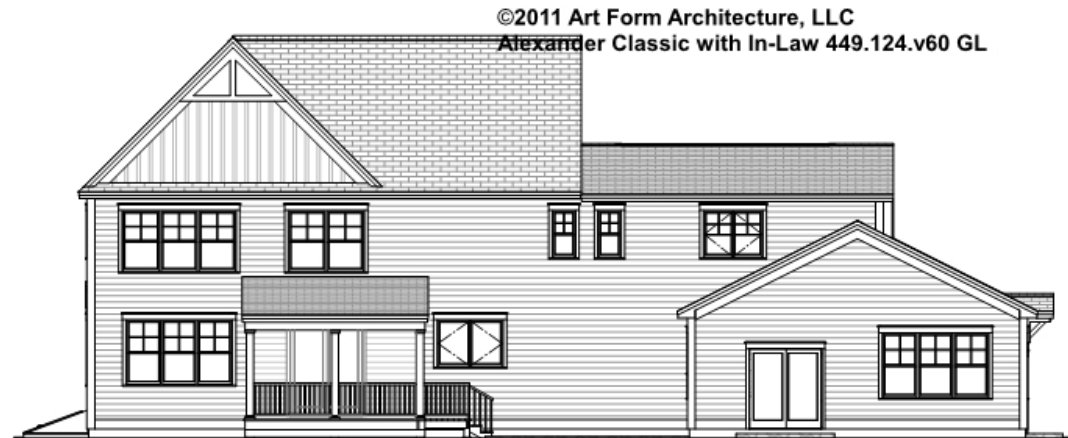




Art Form Architecture, LLC

## ALEXANDER CLASSIC WITH IN-LAW - REAR ELEVATION 449.124.v60 GL

Some features shown are optional. Your Purchase & Sale Agreement governs, whether items are labeled "optional" in this document or not.





Art Form Architecture, LLC

## ALEXANDER CLASSIC WITH IN-LAW - LEFT ELEVATION

449.124.v60 GL

—  
Some features shown are optional. Your Purchase & Sale Agreement governs, whether items are labeled "optional" in this document or not.







Art Form Architecture, LLC

## ALEXANDER CLASSIC WITH IN-LAW - REAR RENDER

### 449.124.v60 GL

—

Some features shown are optional. Your Purchase & Sale Agreement governs, whether items are labeled "optional" in this document or not.

