



Art Form Architecture, LLC

## A MAN'S HOUSE

002.003

In addition to our Terms and Conditions (the "Terms"), please be aware of the following:

Art Form Architecture, LLC ("Artform") requires that our Drawings be built substantially as designed. Artform will not be obligated by or liable for use of this design with markups as part of any builder agreement. While we attempt to accommodate where possible and reasonable, and where the changes do not denigrate our design, any and all changes to Drawings must be approved in writing by Artform. It is recommended that you have your Drawing updated by Artform prior to attaching any Drawing to any builder agreement. Artform shall not be responsible for the misuse of or unauthorized alterations to any of its Drawings.



Width 68.67 <sup>FT</sup>

Depth 28.04 <sup>FT</sup>

Height 25.50 <sup>FT</sup>

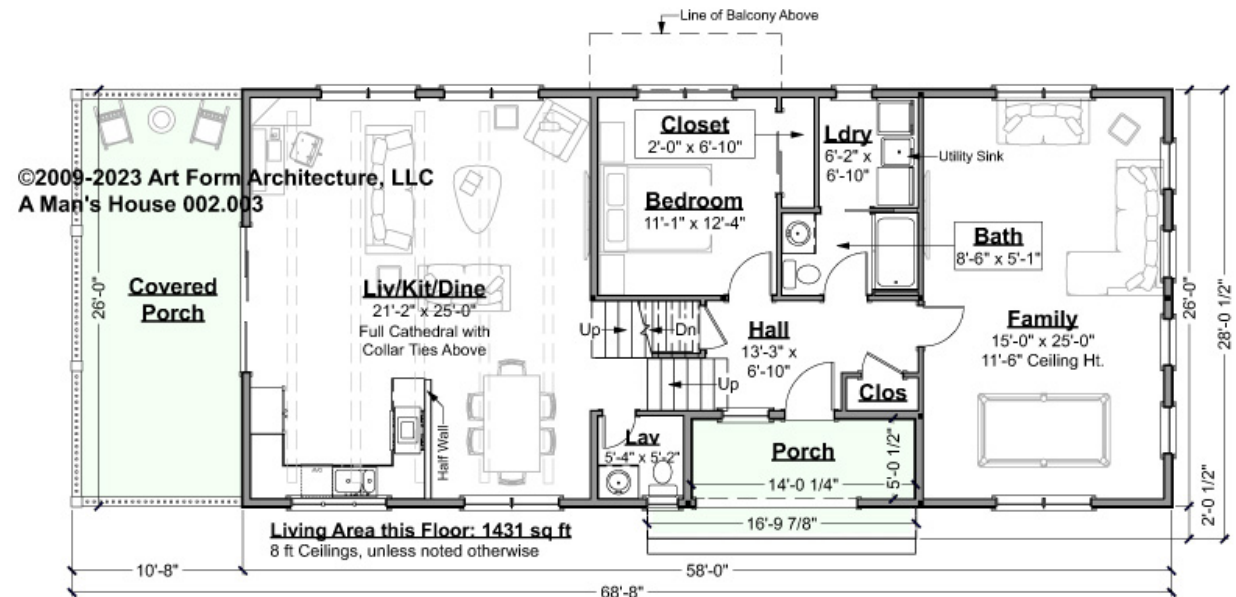
LIVING AREA		1865 <sup>FT</sup>	BEDROOMS		3	BATHROOMS		3.5
Main		1865 <sup>FT</sup>	Main		2	Main		2.5
Future		0 <sup>FT</sup>	Future		1	Future		1
2 <sup>nd</sup> Unit		0 <sup>FT</sup>	2 <sup>nd</sup> Unit		0	2 <sup>nd</sup> Unit		0



## A MAN'S HOUSE - 1<sup>ST</sup> FLOOR

### 002.003

Some features shown are optional. Your Purchase & Sale Agreement governs, whether items are labeled "optional" in this document or not.



CLG HT SHOWN 8'-0"

CLG HT POSSIBLE 8'-0"

\* Major Change Fee, see website plan page for cost

F1 LIVING AREA	1431 <sup>FT</sup>	F1 BEDROOMS	2	F1 BATHROOMS	2.5
Main	1431.00 <sup>FT</sup>	Main	1.00	Main	1.50
Future	0.00 <sup>FT</sup>	Future	1.00	Future	1.00
2 <sup>nd</sup> Unit	0.00 <sup>FT</sup>	2 <sup>nd</sup> Unit	0.00	2 <sup>nd</sup> Unit	0.00



Art Form Architecture, LLC

## A MAN'S HOUSE - 1<sup>ST</sup> FLOOR 002.003

Some features shown are optional. Your Purchase & Sale Agreement governs, whether items are labeled "optional" in this document or not.



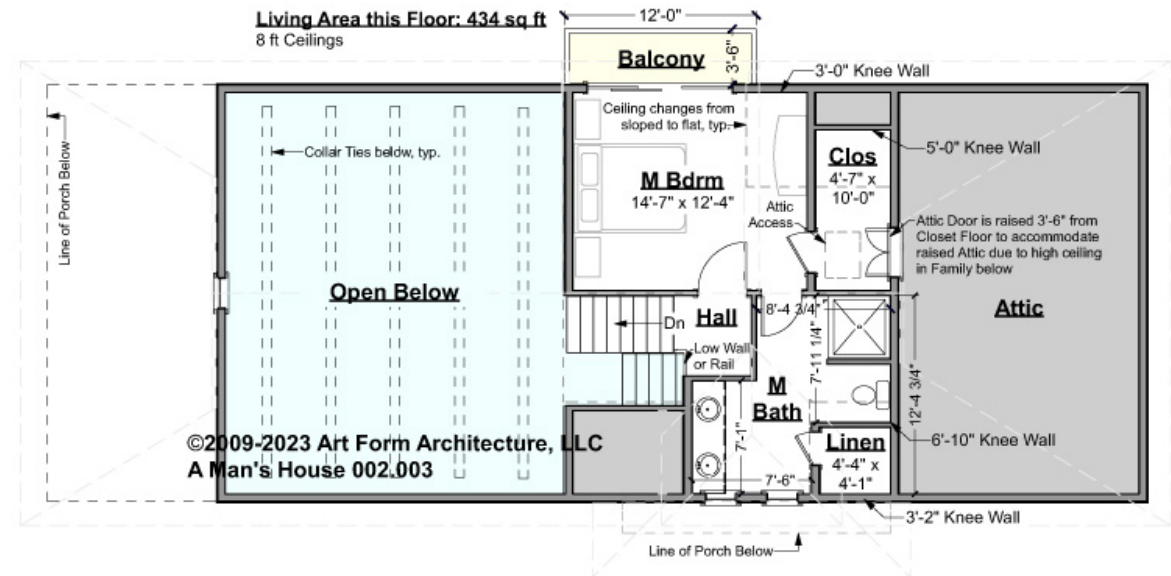
Cathedral Ceiling in Live/Kit/Dine - Additional Image



## A MAN'S HOUSE - 2<sup>ND</sup> FLOOR

### 002.003

Some features shown are optional. Your Purchase & Sale Agreement governs, whether items are labeled "optional" in this document or not.



CLG HT SHOWN 8'-0"

CLG HT POSSIBLE 9'-0"

\* Major Change Fee, see website plan page for cost

F1 LIVING AREA	434 <sup>FT</sup>	F1 BEDROOMS	1	F1 BATHROOMS	1
Main	434.00 <sup>FT</sup>	Main	1.00	Main	1.00
Future	0.00 <sup>FT</sup>	Future	0.00	Future	0.00
2 <sup>nd</sup> Unit	0.00 <sup>FT</sup>	2 <sup>nd</sup> Unit	0.00	2 <sup>nd</sup> Unit	0.00

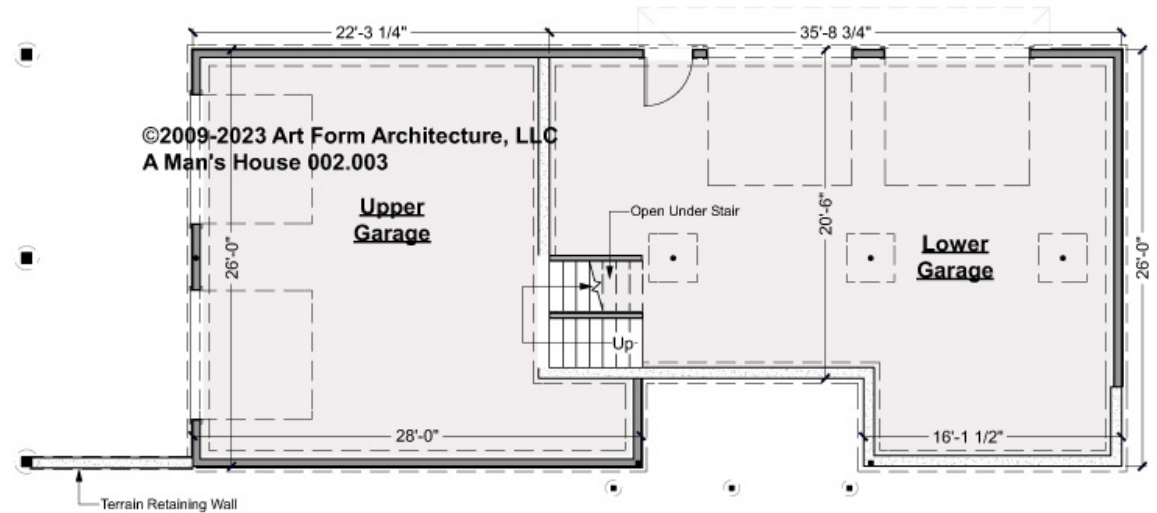




## A MAN'S HOUSE - BASEMENT

### 002.003

Some features shown are optional. Your Purchase & Sale Agreement governs, whether items are labeled "optional" in this document or not.



CLG HT SHOWN 7'-8"      CLG HT POSSIBLE 9'-0"

\* Major Change Fee, see website plan page for cost

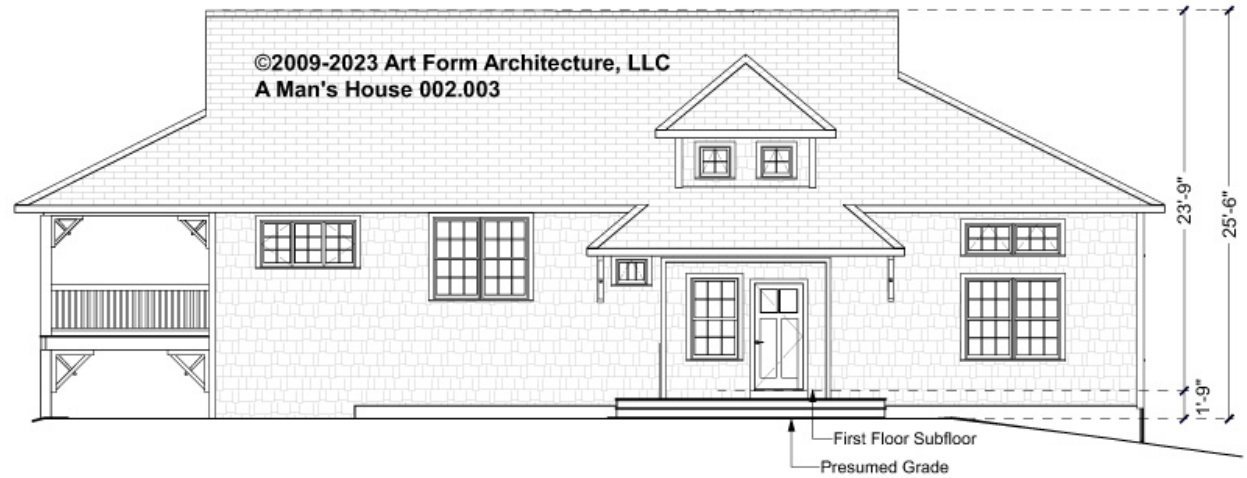
F1 LIVING AREA		0 <sup>FT</sup>	F1 BEDROOMS		0	F1 BATHROOMS		0
Main		0.00 <sup>FT</sup>	Main		0.00	Main		0.00
Future		0.00 <sup>FT</sup>	Future		0.00	Future		0.00
2 <sup>nd</sup> Unit		0.00 <sup>FT</sup>	2 <sup>nd</sup> Unit		0.00	2 <sup>nd</sup> Unit		0.00



Art Form Architecture, LLC

## A MAN'S HOUSE - FRONT ELEVATION 002.003

Some features shown are optional. Your Purchase & Sale Agreement governs, whether items are labeled "optional" in this document or not.





Art Form Architecture, LLC

## A MAN'S HOUSE - RIGHT ELEVATION 002.003

Some features shown are optional. Your Purchase & Sale Agreement governs, whether items are labeled "optional" in this document or not.





Art Form Architecture, LLC

## A MAN'S HOUSE - REAR ELEVATION 002.003

Some features shown are optional. Your Purchase & Sale Agreement governs, whether items are labeled "optional" in this document or not.







Art Form Architecture, LLC

## A MAN'S HOUSE - LEFT ELEVATION 002.003

Some features shown are optional. Your Purchase & Sale Agreement governs, whether items are labeled "optional" in this document or not.





Art Form Architecture, LLC

## A MAN'S HOUSE - REAR RENDER 002.003

—  
Some features shown are optional. Your Purchase & Sale Agreement governs, whether items are labeled "optional" in this document or not.

