



Art Form Architecture, LLC

## CALEB PRIME EXPANDED 591.122.v10 GR

Part of the **Classy Colonials Collection**.

In addition to our Terms and Conditions (the "Terms"), please be aware of the following:

Art Form Architecture, LLC ("Artform") requires that our Drawings be built substantially as designed. Artform will not be obligated by or liable for use of this design with markups as part of any builder agreement. While we attempt to accommodate where possible and reasonable, and where the changes do not denigrate our design, any and all changes to Drawings must be approved in writing by Artform. It is recommended that you have your Drawing updated by Artform prior to attaching any Drawing to any builder agreement. Artform shall not be responsible for the misuse of or unauthorized alterations to any of its Drawings.



Width 52.50 <sup>FT</sup>

Depth 36.00 <sup>FT</sup>

Height 34.92 <sup>FT</sup>

LIVING AREA		3677 <sup>FT</sup>	BEDROOMS		6	BATHROOMS		3
Main		2976 <sup>FT</sup>	Main		4	Main		3
Future		701 <sup>FT</sup>	Future		2	Future		0
2 <sup>nd</sup> Unit		0 <sup>FT</sup>	2 <sup>nd</sup> Unit		0	2 <sup>nd</sup> Unit		0

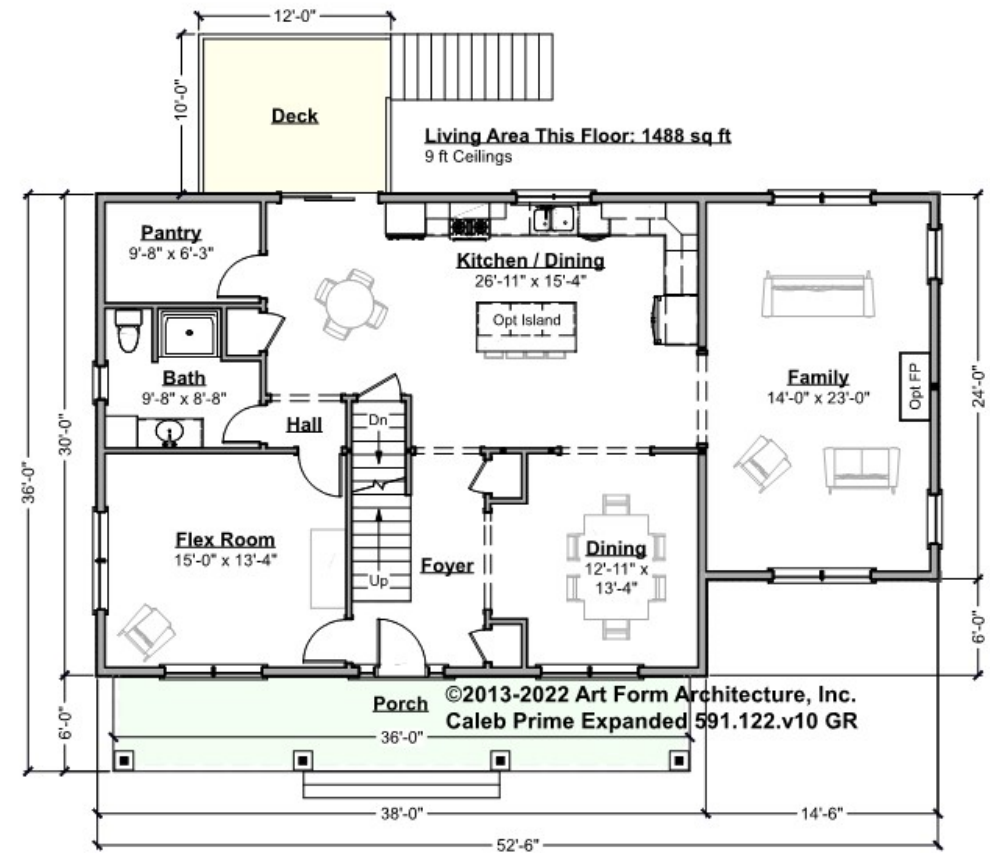


Art Form Architecture, LLC

## CALEB PRIME EXPANDED - 1<sup>ST</sup> FLOOR

### 591.122.v10 GR

Some features shown are optional. Your Purchase & Sale Agreement governs, whether items are labeled "optional" in this document or not.



CLG HT SHOWN 9'-0"

CLG HT POSSIBLE 8'-0"

\* Major Change Fee, see website plan page for cost

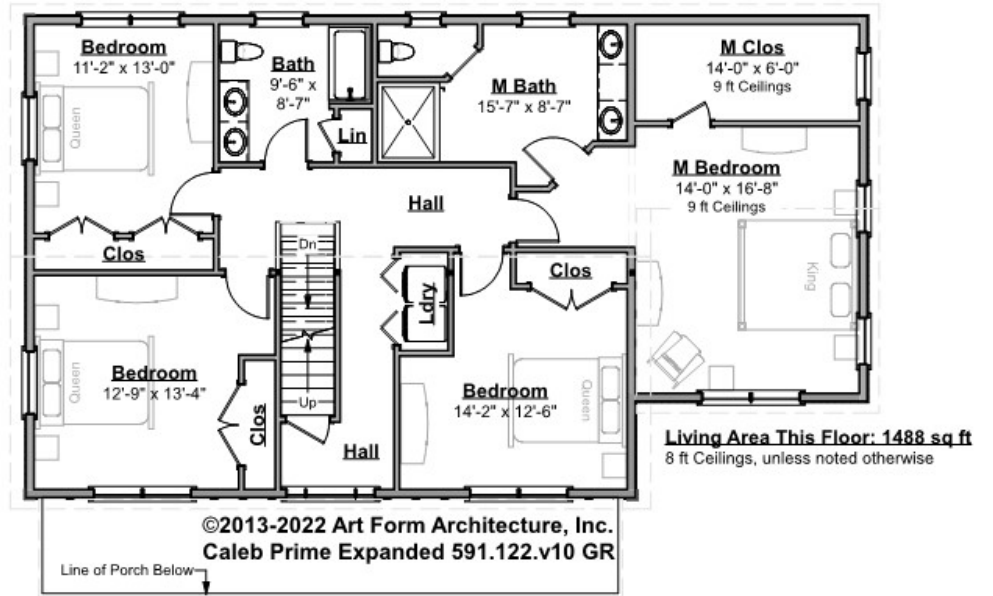
F1 LIVING AREA		1488 FT	F1 BEDROOMS		1	F1 BATHROOMS		1
Main		1488.00 FT	Main			Main		1.00
Future		FT	Future		1.00	Future		
2 <sup>nd</sup> Unit		FT	2 <sup>nd</sup> Unit			2 <sup>nd</sup> Unit		



## CALEB PRIME EXPANDED - 2<sup>ND</sup> FLOOR

591.122.v10 GR

Some features shown are optional. Your Purchase & Sale Agreement governs, whether items are labeled "optional" in this document or not.



CLG HT SHOWN 8'-0"

CLG HT POSSIBLE 8'-0"

\* Major Change Fee, see website plan page for cost

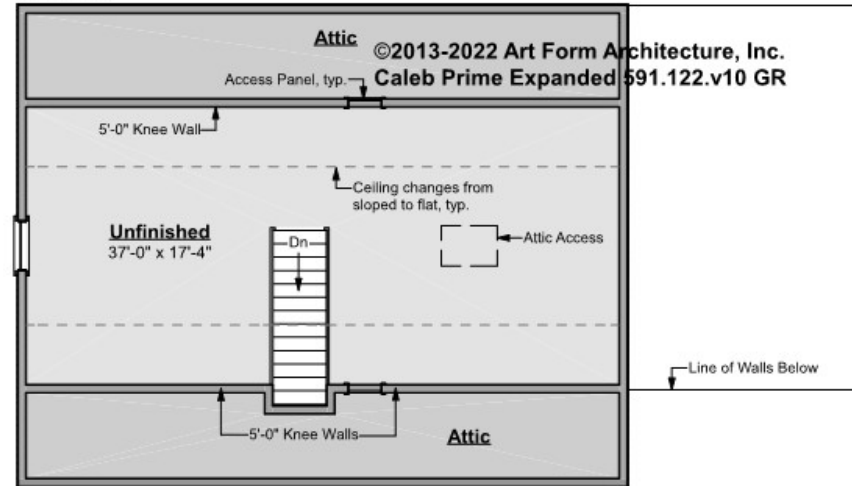
F1 LIVING AREA		F1 BEDROOMS		F1 BATHROOMS	
	1488 <sup>FT</sup>		4		2
Main	1488.00 <sup>FT</sup>	Main	4.00	Main	2.00
Future	FT	Future		Future	
2 <sup>nd</sup> Unit	FT	2 <sup>nd</sup> Unit		2 <sup>nd</sup> Unit	



# CALEB PRIME EXPANDED - 3<sup>RD</sup> FLOOR 591.122.v10 GR

Some features shown are optional. Your Purchase & Sale Agreement governs, whether items are labeled "optional" in this document or not.

Unfinished Living Area This Floor: 701 sq ft  
8 ft Ceilings



CLG HT SHOWN 8'-0"

CLG HT POSSIBLE 9'-0"

\* Major Change Fee, see website plan page for cost

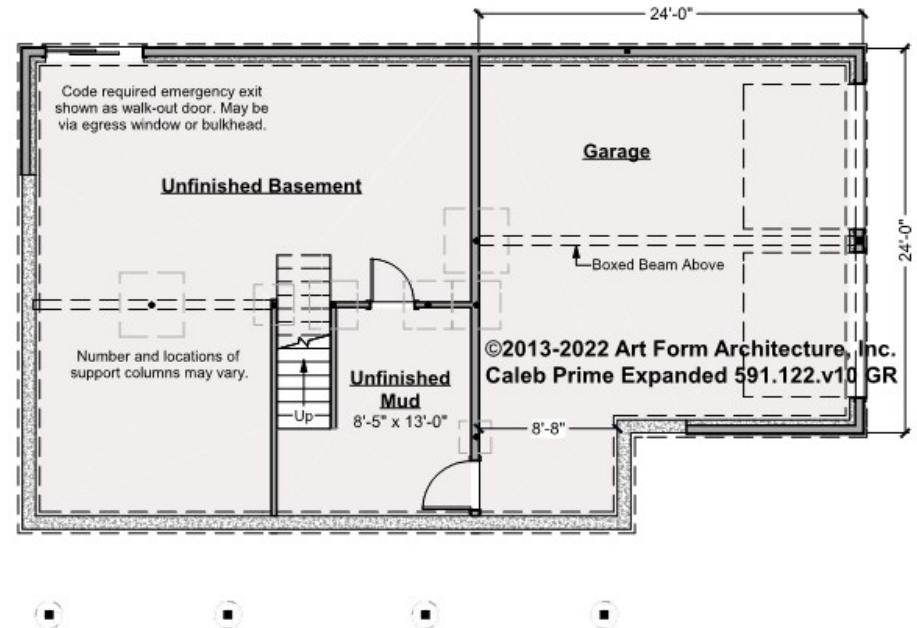
F1 LIVING AREA		701 FT	F1 BEDROOMS		1	F1 BATHROOMS		0
Main		FT	Main			Main		
Future		701.00 FT	Future		1.00	Future		
2 <sup>nd</sup> Unit		FT	2 <sup>nd</sup> Unit			2 <sup>nd</sup> Unit		



## CALEB PRIME EXPANDED - BASEMENT

591.122.v10 GR

Some features shown are optional. Your Purchase & Sale Agreement governs, whether items are labeled "optional" in this document or not.



CLG HT SHOWN 7'-8"

CLG HT POSSIBLE 9'-0"

\* Major Change Fee, see website plan page for cost

F1 LIVING AREA		0 FT	F1 BEDROOMS		0	F1 BATHROOMS		0
Main		FT	Main			Main		
Future		FT	Future			Future		
2 <sup>nd</sup> Unit		FT	2 <sup>nd</sup> Unit			2 <sup>nd</sup> Unit		



Art Form Architecture, LLC

## CALEB PRIME EXPANDED - FRONT ELEVATION

591.122.v10 GR

Some features shown are optional. Your Purchase & Sale Agreement governs, whether items are labeled "optional" in this document or not.







Art Form Architecture, LLC

## CALEB PRIME EXPANDED - RIGHT ELEVATION

591.122.v10 GR

Some features shown are optional. Your Purchase & Sale Agreement governs, whether items are labeled "optional" in this document or not.



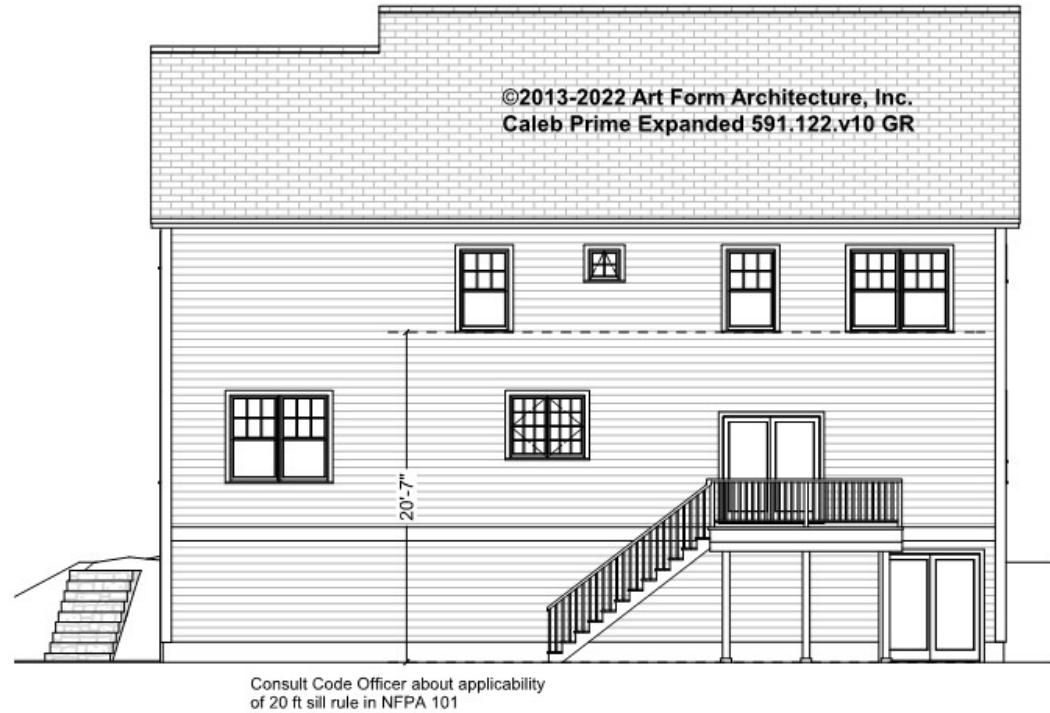


Art Form Architecture, LLC

## CALEB PRIME EXPANDED - REAR ELEVATION

591.122.v10 GR

Some features shown are optional. Your Purchase & Sale Agreement governs, whether items are labeled "optional" in this document or not.







Art Form Architecture, LLC

## CALEB PRIME EXPANDED - LEFT ELEVATION

591.122.v10 GR

—  
Some features shown are optional. Your Purchase & Sale Agreement governs, whether items are labeled "optional" in this document or not.

