



Legend	
	Load from Above
	Wall
	APA EWS Rim Board 1.125 X 11.875
	2.0E CP-LAM 1.75 X 11.875
	OJ??? 2.5 X 11.875
	OJ314 2.5 X 11.875
	OJ315 2.5 X 11.875

Ground Floor LVL/LSL							
Label	Description	Width	Depth	Qty	Plies	Pcs	Length
fb4	2.0E CP-LAM	1.75	11.875	2	2	4	16-0-0
fb5	2.0E CP-LAM	1.75	11.875	1	4	4	16-0-0
fb3	2.0E CP-LAM	1.75	11.875	1	2	2	6-0-0
fb2	2.0E CP-LAM	1.75	11.875	1	2	2	4-0-0
fb1	2.0E CP-LAM	1.75	11.875			1	2-0-0
						Total LF:	150
Rim Board							
Label	Description	Width	Depth	Qty	Plies	Pcs	Length
rb1	APA EWS Rim Board 1.125 X 11.875	1.125	11.875			14	12-0-0
Blocking							
Label	Description	Width	Depth	Qty	Plies	Pcs	Length
blk1	NI-40x	2.5	11.875	LinFt		Varies	5-0-0
Column							
Label	Description	Width	Depth	Qty	Plies	Pcs	Length
c1	Lumber Rectangle 7" X 7" Brg	7	7			1	8
Hanger							
					Beam/Girder	Supported Member	
Label	Pcs	Description	Skew	Slope	fasteners	fasteners	
hgr1	1	HUC410 (Min)			14 16d	6 10d	
hgr2	4	IUS3.56/11.88 (Min)			12 10d		
hgr4	2	HUS1.81/10			30 16d	10 16d	
hgr5	30	IUS2.56/11.88 (Max)			10 10d	2 10dx1 1/2	
Floor Truss							
Label	Description	Width	Depth	Qty	Plies	Pcs	Length
J1	OJ???	2.5	11.875			2	4-0-0
						Total LF:	8'
fb6	OJ314	2.5	11.875			1	10-0-0
fb7	OJ314	2.5	11.875			1	10-0-0
						Total LF:	20'
J8	OJ314	2.5	11.875			7	16-0-0
J4	OJ314	2.5	11.875			4	10-0-0
J3	OJ314	2.5	11.875			3	10-0-0
						Total LF:	182'
J14	OJ315	2.5	11.875			14	18-0-0
J7	OJ315	2.5	11.875			13	18-0-0
						Total LF:	486'
fb8	OJ315	2.5	11.875	1	2	2	18-0-0
fb9	OJ315	2.5	11.875	1	2	2	18-0-0
						Total LF:	72'
Strongback							
Label	Description	Width	Depth	Qty	Plies	Pcs	Length
	S-P-F #2	1.5	5.5	LinFt		Varies	55-0-0

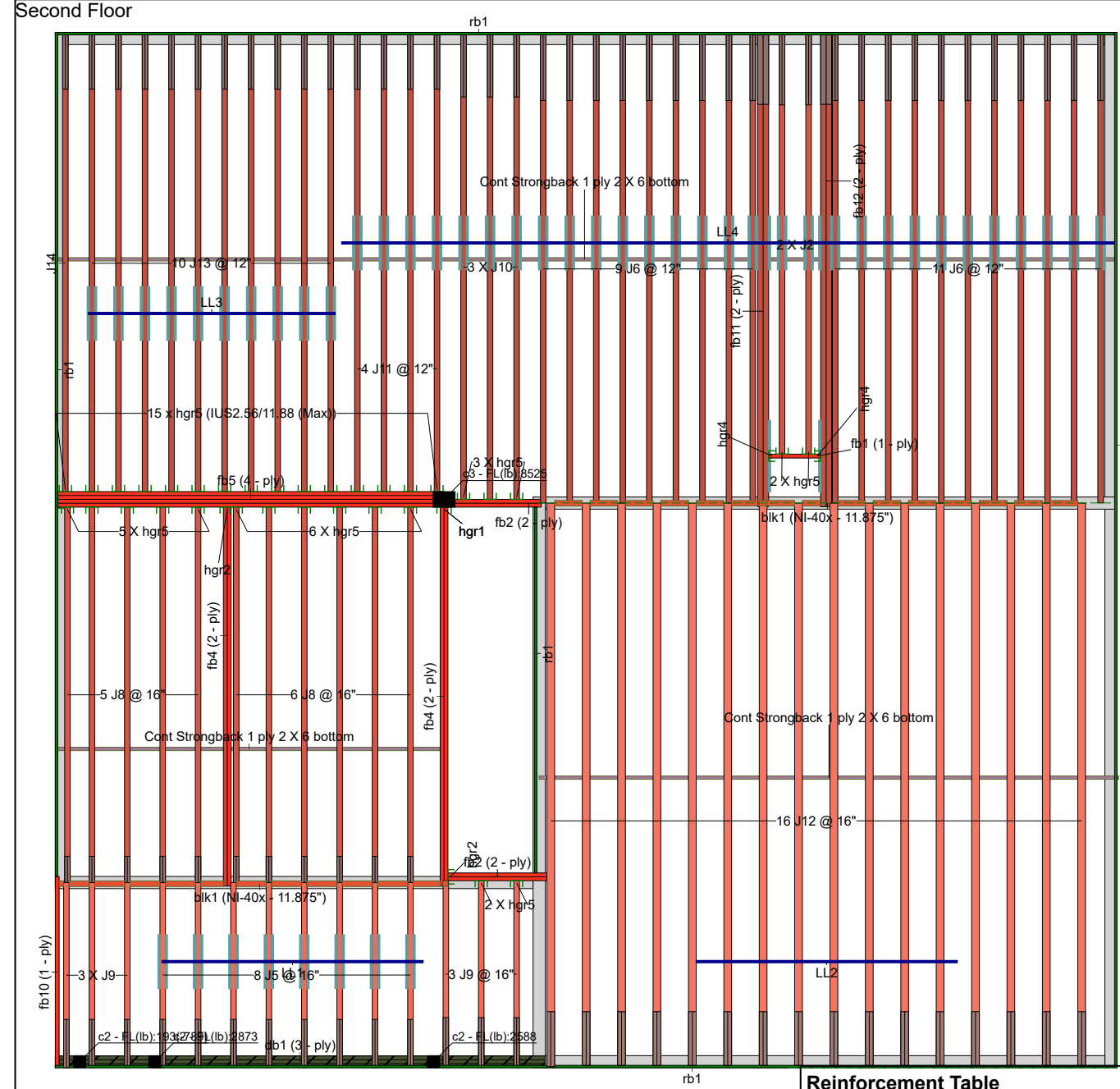
Reinforcement Table

All dimensions and faces are referenced when looking at the joist with the trimmable end on the right.

fb6	Add REINFORCEMENT: Plywood 32/16 4Ply (15/32") x 11 7/8" of height x 28" of length, starting at 0" from left end, in VERTICAL position, fixed on BACK side over previously installed wood filler parts with PL PREMIUM glue and to top and bottom chord with PL PREMIUM glue and 3" nails at 5" o.c. Add REINFORCEMENT: Plywood 32/16 4Ply (15/32") x 11 7/8" of height x 24" of length, starting at 60" from left end, in VERTICAL position, fixed on BOTH sides to top and bottom chord with PL PREMIUM glue and 3" nails at 5" o.c. Add WOOD FILLER: Plywood 32/16 4Ply (15/32") x 8 7/8" of height x 24" of length, STARTING at 0" from LEFT end, fixed on BACK side to webs with PL PREMIUM glue and 2" nails at 3" o.c. Add WOOD FILLER: Plywood 32/16 4Ply (15/32") x 11 7/8" of height x 16" of length. STARTING at 4" from LEFT end, fixed on BACK side over previously installed reinforcement parts, fixed with PL PREMIUM glue and 3" nails at 5" o.c. to joist top and bottom chord.
fb7	Add REINFORCEMENT: Plywood 32/16 4Ply (15/32") x 11 7/8" of height x 24" of length, starting at 60" from left end, in VERTICAL position, fixed on BOTH sides to top and bottom chord with PL PREMIUM glue and 3" nails at 5" o.c.
fb8	Add REINFORCEMENT: Plywood 32/16 4Ply (15/32") x 11 7/8" of height x 38 7/8" of length, starting at 0" from left end, in VERTICAL position, fixed on FRONT side over previously installed wood filler parts with PL PREMIUM glue and to top and bottom chord with PL PREMIUM glue and 3" nails at 5" o.c. Add REINFORCEMENT: Plywood 32/16 4Ply (15/32") x 11 7/8" of height x 15 7/16" of length, starting at 0" from left end, in VERTICAL position, fixed on BACK side to top and bottom chord with PL PREMIUM glue and 3" nails at 5" o.c. Add WOOD FILLER: Plywood 32/16 4Ply (15/32") x 8 7/8" of height x 24" of length, STARTING at 10 7/8" from LEFT end, fixed on FRONT side to webs with PL PREMIUM glue and 2" nails at 3" o.c.
fb9	Add WOOD FILLER: Plywood 32/16 4Ply (15/32") x 11 7/8" of height x 16" of length, STARTING at 14 7/8" from LEFT end, fixed on FRONT side over previously installed reinforcement parts, fixed with PL PREMIUM glue and 3" nails at 5" o.c. to joist top and bottom chord. Add REINFORCEMENT: Plywood 32/16 4Ply (15/32") x 11 7/8" of height x 15 7/16" of length, starting at 0" from left end, in VERTICAL position, fixed on FRONT side to top and bottom chord with PL PREMIUM glue and 3" nails at 5" o.c. Add REINFORCEMENT: Plywood 32/16 4Ply (15/32") x 11 7/8" of height x 38 7/8" of length, starting at 0" from left end, in VERTICAL position, fixed on BACK side over previously installed wood filler parts with PL PREMIUM glue and to top and bottom chord with PL PREMIUM glue and 3" nails at 5" o.c. Add WOOD FILLER: Plywood 32/16 4Ply (15/32") x 8 7/8" of height x 24" of length, STARTING at 10 7/8" from LEFT end, fixed on BACK side to webs with PL PREMIUM glue and 2" nails at 3" o.c. Add WOOD FILLER: Plywood 32/16 4Ply (15/32") x 11 7/8" of height x 16" of length, STARTING at 14 7/8" from LEFT end, fixed on BACK side over previously installed reinforcement parts, fixed with PL PREMIUM glue and 3" nails at 5" o.c. to joist top and bottom chord.
J3	Add REINFORCEMENT: Plywood 32/16 4Ply (15/32") x 11 7/8" of height x 24" of length, starting at 60" from left end, in VERTICAL position, fixed on BOTH sides to top and bottom chord with PL PREMIUM glue and 3" nails at 5" o.c.
J3	Add REINFORCEMENT: Plywood 32/16 4Ply (15/32") x 11 7/8" of height x 24" of length, starting at 60" from left end, in VERTICAL position, fixed on BOTH sides to top and bottom chord with PL PREMIUM glue and 3" nails at 5" o.c.

Layout Name	
lot 185	
Design Method	
ASD	
Description	
Created November 23, 2021	
Builder	
Sales Rep	
Designer Travis Cross	
Shipping	
Project	
Builder's Project	
Poulin Lumber Inc. USLBM 3639 Us Rt 5 Derby , Vermont 05829 8027660363	
Ground Floor	
Design Method	ASD (USA)
Building Code	IBC/IRC 2015
Floor	
Loads	
Live	40
Dead	10
Deflection Joist	
LL Span L/	480
TL Span L/	240
Deflection Flush Girder	
LL Span L/	480
TL Span L/	240
Deflection Dropped Girder	
LL Span L/	480
TL Span L/	240
Deflection Header	
LL Span L/	480
TL Span L/	240
Decking	
Decking	SPF Plywood
	3/4 APA Rated
	Sturd-I-Floor
	Nailed Only
Fastener	

Second Floor



Reinforcement Table

All dimensions and faces are referenced when looking at the joist with the trimmable end on the right.

fb11	Add REINFORCEMENT: Plywood 32/16 4Ply (15/32") x 11 7/8" of height x 32" of length, starting at 6 7/8" from left end, in VERTICAL position, fixed on FRONT side over previously installed wood filler parts with PL PREMIUM glue and to top and bottom chord with PL PREMIUM glue and 3" nails at 5" o.c. Add REINFORCEMENT: Plywood 32/16 4Ply (15/32") x 11 7/8" of height x 24" of length, starting at 107 1/4" from left end, in VERTICAL position, fixed on BOTH sides to top and bottom chord with PL PREMIUM glue and 3" nails at 5" o.c. Add WOOD FILLER: Plywood 32/16 4Ply (15/32") x 8 7/8" of height x 24" of length, STARTING at 10 7/8" from LEFT end, fixed on FRONT side to webs with PL PREMIUM glue and 2" nails at 3" o.c. Add WOOD FILLER: Plywood 32/16 4Ply (15/32") x 11 7/8" of height x 16" of length, STARTING at 14 7/8" from LEFT end, fixed on FRONT side over previously installed reinforcement parts, fixed with PL PREMIUM glue and 3" nails at 5" o.c. to joist top and bottom chord.
fb12	Add REINFORCEMENT: Plywood 32/16 4Ply (15/32") x 11 7/8" of height x 32" of length, starting at 6 7/8" from left end, in VERTICAL position, fixed on BACK side over previously installed wood filler parts with PL PREMIUM glue and to top and bottom chord with PL PREMIUM glue and 3" nails at 5" o.c. Add REINFORCEMENT: Plywood 32/16 4Ply (15/32") x 11 7/8" of height x 24" of length, starting at 107 1/4" from left end, in VERTICAL position, fixed on BOTH sides to top and bottom chord with PL PREMIUM glue and 3" nails at 5" o.c. Add WOOD FILLER: Plywood 32/16 4Ply (15/32") x 8 7/8" of height x 24" of length, STARTING at 10 7/8" from LEFT end, fixed on BACK side to webs with PL PREMIUM glue and 2" nails at 3" o.c. Add WOOD FILLER: Plywood 32/16 4Ply (15/32") x 11 7/8" of height x 16" of length, STARTING at 14 7/8" from LEFT end, fixed on BACK side over previously installed reinforcement parts, fixed with PL PREMIUM glue and 3" nails at 5" o.c. to joist top and bottom chord.
J10	Add REINFORCEMENT: Plywood 32/16 4Ply (15/32") x 11 7/8" of height x 24" of length, starting at 103 15/16" from left end, in VERTICAL position, fixed on BOTH sides to top and bottom chord with PL PREMIUM glue and 3" nails at 5" o.c.
J11	Add REINFORCEMENT: Plywood 32/16 4Ply (15/32") x 11 7/8" of height x 24" of length, starting at 100 7/16" from left end, in VERTICAL position, fixed on BOTH sides to top and bottom chord with PL PREMIUM glue and 3" nails at 5" o.c.
J13	Add REINFORCEMENT: Plywood 32/16 4Ply (15/32") x 11 7/8" of height x 24" of length, starting at 68 1/2" from left end, in VERTICAL position, fixed on BOTH sides to top and bottom chord with PL PREMIUM glue and 3" nails at 5" o.c.
J2	Add REINFORCEMENT: Plywood 32/16 4Ply (15/32") x 11 7/8" of height x 24" of length, starting at 83 1/2" from left end, in VERTICAL position, fixed on BOTH sides to top and bottom chord with PL PREMIUM glue and 3" nails at 5" o.c.
J5	Add REINFORCEMENT: Plywood 32/16 4Ply (15/32") x 11 7/8" of height x 24" of length, starting at 23 3/4" from left end, in VERTICAL position, fixed on BOTH sides to top and bottom chord with PL PREMIUM glue and 3" nails at 5" o.c.
J6	Add REINFORCEMENT: Plywood 32/16 4Ply (15/32") x 11 7/8" of height x 24" of length, starting at 105 1/2" from left end, in VERTICAL position, fixed on BOTH sides to top and bottom chord with PL PREMIUM glue and 3" nails at 5" o.c.

Second Floor

LVL/LSL

Label	Description	Width	Depth	Qty	Plies	Pcs	Length
db1	2.0E CP-LAM	1.75	9.25	1	3	3	20-0-0
						Total LF:	60'
fb4	2.0E CP-LAM	1.75	11.875	2	2	4	16-0-0
fb5	2.0E CP-LAM	1.75	11.875	1	4	4	16-0-0
fb10	2.0E CP-LAM	1.75	11.875			1	8-0-0
fb2	2.0E CP-LAM	1.75	11.875	2	2	4	4-0-0
fb1	2.0E CP-LAM	1.75	11.875			1	2-0-0
						Total LF:	154'

Rim Board

Label	Description	Width	Depth	Qty	Plies	Pcs	Length
rb1	APA EWS Rim Board 1.125 X 11.875	1.125	11.875			14	12-0-0

Blocking

Label	Description	Width	Depth	Qty	Plies	Pcs	Length
blk1	NI-40x	2.5	11.875	LinFt		Varies	28-0-0

Column

Label	Description	Width	Depth	Qty	Plies	Pcs	Length
c3	Lumber Rectangle 10" X 7" Brg	7	10			1	8
c2	Lumber Rectangle 5.5" X 5.5" Brg	5.5	5.5			3	8

Floor Truss

Label	Description	Width	Depth	Qty	Plies	Pcs	Length
J8	OJ314	2.5	11.875			11	16-0-0
J2	OJ314	2.5	11.875			2	16-0-0
J5	OJ314	2.5	11.875			8	8-0-0
J9	OJ314	2.5	11.875			6	8-0-0
						Total LF:	320'
fb11	OJ315	2.5	11.875	1	2	2	18-0-0
fb12	OJ315	2.5	11.875	1	2	2	18-0-0
						Total LF:	72'
J6	OJ315	2.5	11.875			20	18-0-0
J13	OJ315	2.5	11.875			10	18-0-0
J11	OJ315	2.5	11.875			4	18-0-0
J10	OJ315	2.5	11.875			3	18-0-0
J14	OJ315	2.5	11.875			1	18-0-0
						Total LF:	684'
J12	OJ418	3.5	11.875			16	22-0-0
						Total LF:	352'

Hanger

Label	Pcs	Description	Skew	Slope	Beam/Girder	Supported Member
					fasteners	fasteners
hgr1	1	HUC410 (Min)			14 16d	6 10d
hgr2	2	IUS3.56/11.88 (Min)			12 10d	
hgr4	2	HUS1.81/10			30 16d	10 16d
hgr5	33	IUS2.56/11.88 (Max)			10 10d	2 10dx1 1/2

Strongback

Label	Description	Width	Depth	Qty	Plies	Pcs	Length
	D FIR-L #2	1.5	5.5	LinFt		Varies	77-0-0

Layout Name

lot 185

Design Method

ASD

Description

Created

November 23, 2021

Builder

Sales Rep

Designer

Travis Cross

Shipping

Project

Builder's Project

Poulin Lumber Inc. USLBM

3639 Us Rt 5

Derby , Vermont

05829

8027660363

Second Floor

Design Method

ASD (USA)

Building Code

IBC/IRC 2015

Floor

Loads

Live

40

Dead

10

Deflection Joist

LL Span L/

480

TL Span L/

240

Deflection Flush Girder

LL Span L/

480

TL Span L/

240

Deflection Dropped Girder

LL Span L/

480

TL Span L/

240

Deflection Header

LL Span L/

480

TL Span L/

240

Decking

Decking

SPF Plywood

3/4 APA Rated

Sturd-I-Floor

Fastener

Nailed Only

Legend

Load from Above

Wall

APA EWS Rim Board 1.125 X 11.875

2.0E CP-LAM 1.75 X 9.25 (Dropped)

2.0E CP-LAM 1.75 X 11.875