

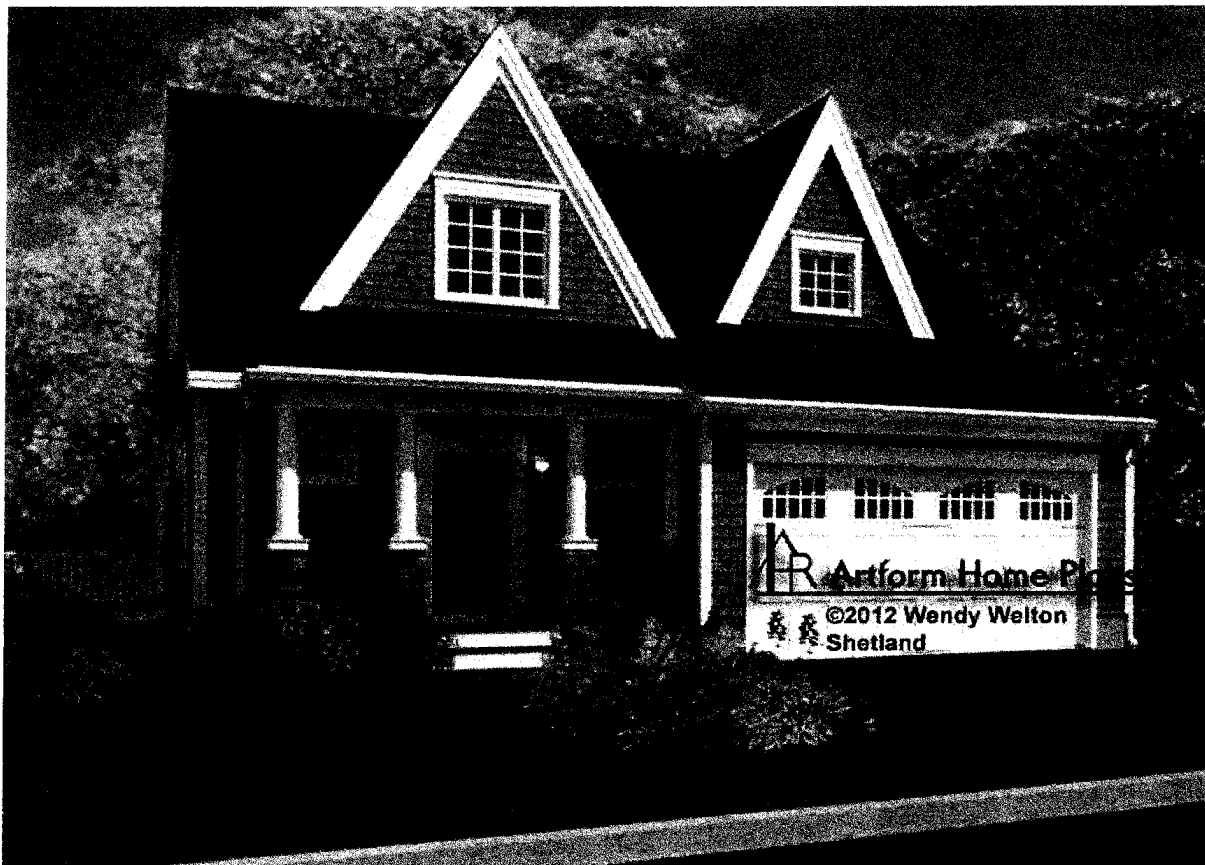
15 Box wood  
July 8-4:00pm

LOT #23

# Shetland

537.126.v2

© 2013 Art Form Architecture, Inc. All Rights Reserved . <http://www.artformhomeplans.com>



The Shetland was developed for the narrower lot. We've just updated to show it with a full foundation. We also have it as slab-on-grade. Notice the small Study - just big enough for the printer, household bills, etc.

AS PER PLAN ATTACHED

	Living Area	Bedrooms	Bathrooms	Ceiling Height Shown	Ceiling Height Possible*
First Floor	1063 SF	1	1.5	9'-0"	8'-0"
Second Floor	820 SF	2	1.0	8'-0"	8'-0"
Total Above Grade	<b>1883 SF</b>	<b>3</b>	<b>2.5</b>		
Basement	0 SF	0	0.0		

\* -- Increasing ceiling height requires a Major Change.

<http://www.artformhomeplans.com/Contact.a5w>

<http://www.artformhomeplans.com/TermsConditions.a5w>

# Shetland

537.126.v2

© 2013 Art Form Architecture, Inc. All Rights Reserved . <http://www.artformhomeplans.com>

## First Floor

Living Area: 1063 SF

Bedrooms: 1

Bathrooms: 1.5

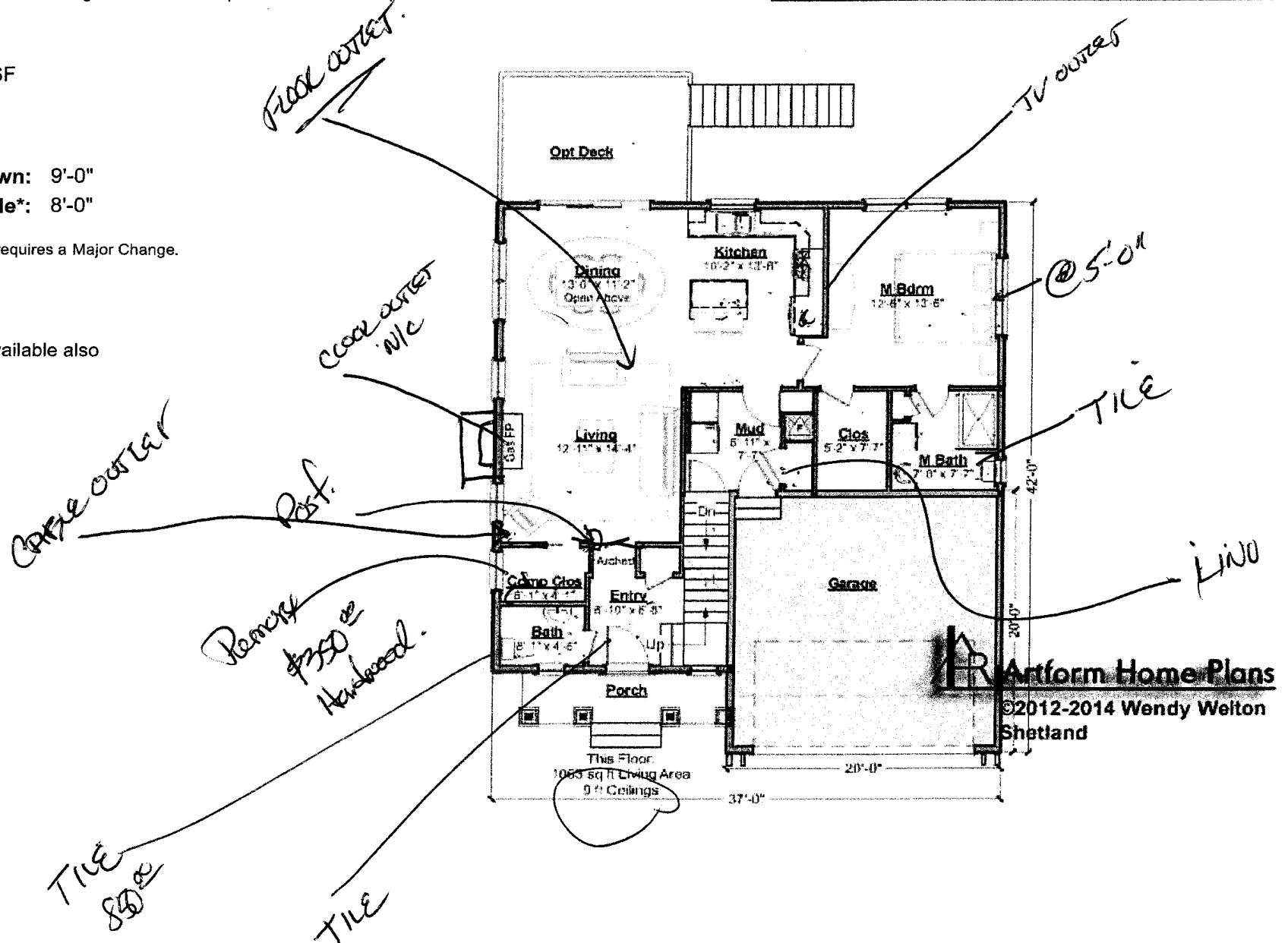
Ceiling Height Shown: 9'-0"

Ceiling Height Possible\*: 8'-0"

\* -- Increasing ceiling height requires a Major Change.

Slab on grade version available also

**Artform Home Plans**



# Shetland

537.126.v2

© 2013 Art Form Architecture, Inc. All Rights Reserved . <http://www.artformhomeplans.com>

## Second Floor

**Living Area:** 820 SF

**Bedrooms:** 2

**Bathrooms:** 1.0

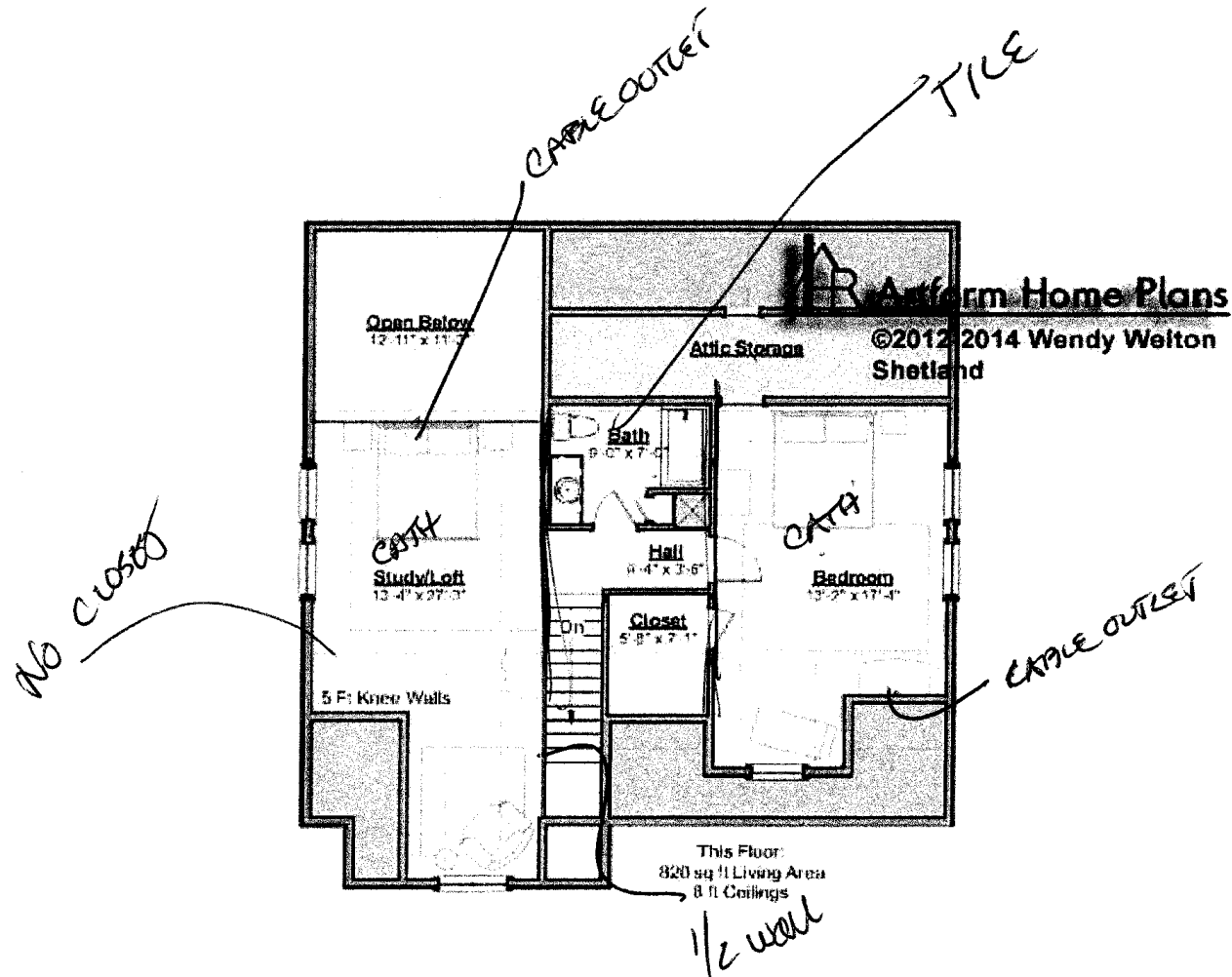
**Ceiling Height Shown:** 8'-0"

**Ceiling Height Possible\*:** 8'-0"

\* -- Increasing ceiling height requires a Major Change.

The Study / Loft can be enclosed as an additional Bedroom. But the walk-in closet cannot be converted to a bath, due to building code height requirements.

 **Artform Home Plans**



# Shetland

537.126.v2

© 2013 Art Form Architecture, Inc. All Rights Reserved . <http://www.artformhomeplans.com>

## Basement Floor

**Living Area:** 0 SF

**Bedrooms:** 0

**Bathrooms:** 0.0

**Ceiling Height Shown:** 7'-8"

**Ceiling Height Possible\*:** 9'-0"

\* -- Increasing ceiling height requires a Major Change.

