

Lot 15 Huntington Run, Kittery, ME
by or for Chinburg Builders

[illegible]

Your use of these drawings constitutes an acceptance of responsibility as outlined in "Your Choice of the Best" and "Your Choice of the Future."

If you have any concerns or questions, please feel free to contact us. We are happy to clarify matters that often become confused. As listed on our Web page, we can also offer personal tours of our projects. We are always available by phone as being responsive, or additional detailing.

B **Artform Home Plans**

Baby Kloss Cottage
L&L Inc./Bespoken Art
© 2008/2009 Artform Home Plans Ltd. 001.91.9595
1500 E. 1st Avenue, Suite 100, Fort Collins, CO 80504
Tel: 970.226.0000 Fax: 970.226.0001 Email: info@artformplans.com

Project No. **2**
COST/ESTIMATE

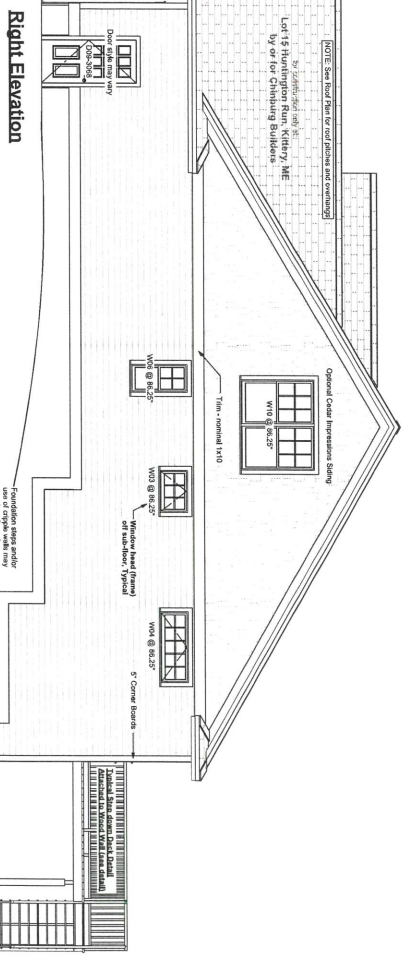
Artform Home Plan

© 2006-2019 Adel Fom Architecture 603.431.3933

208 15 Huntington Park

See a list of articles related to parenting / Parent 3 5-1
 Search available on: 11/23/2013 10:00 PM AEST

P2 - Action Items



Left Elevation

[illegible]